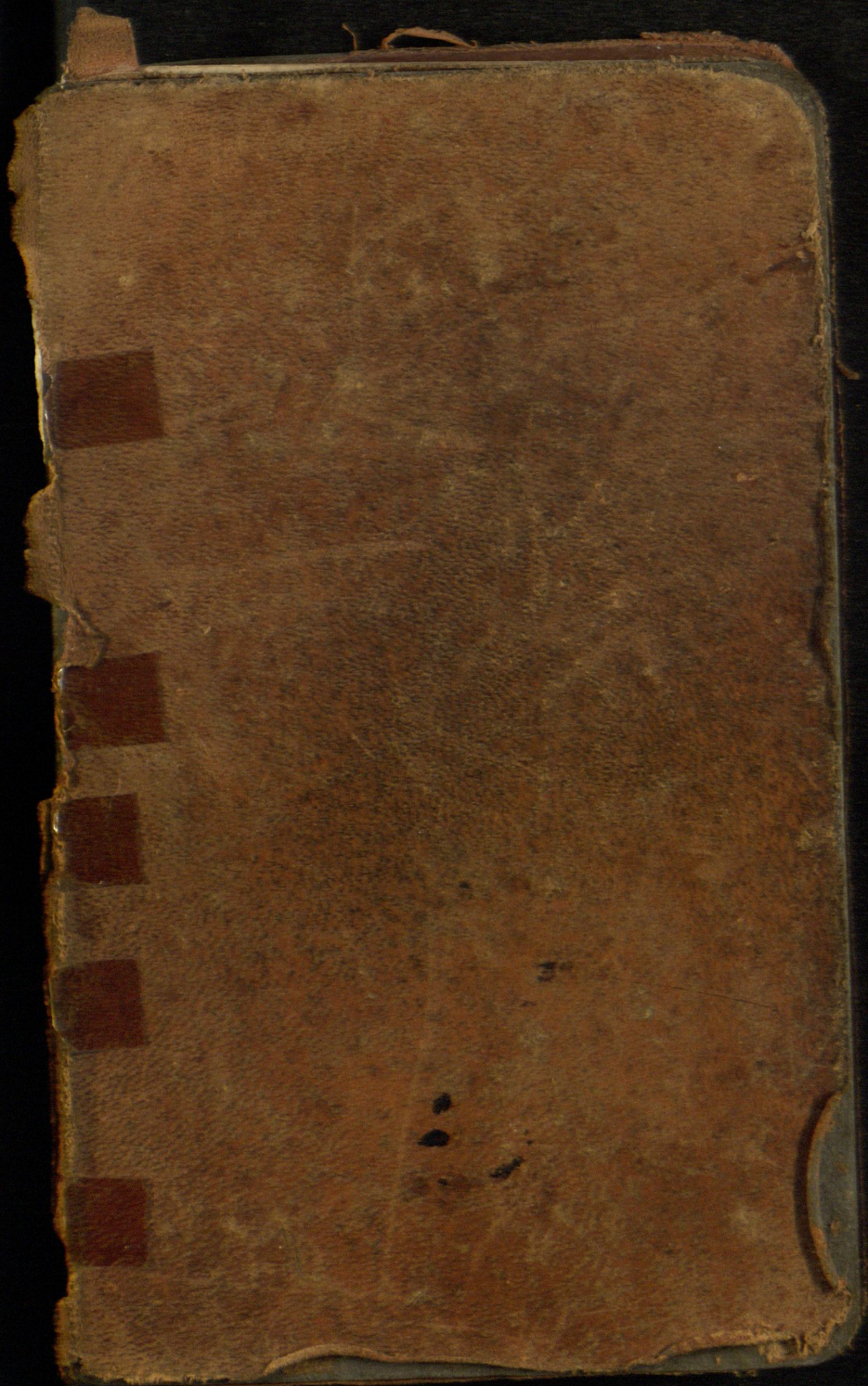


74



586020W

3 FROM CENTER OF ROADWAY FOR CROSS-SECTIONING.

ROADWAY 14 FEET WIDE. SIDE SLOPES $1\frac{1}{2}$ TO 1.

FOR SINGLE TRACK EMBANKMENT.

	.1	.2	.3	.4	.5	.6	.7	.8	.9	
0	7.2	7.3	7.5	7.6	7.8	7.9	8.1	8.2	8.4	0
0.5	8.7	8.8	9.0	9.1	9.3	9.4	9.6	9.7	9.9	1
1.0	10.2	10.3	10.5	10.6	10.8	10.9	11.1	11.2	11.4	2
1.5	11.7	11.8	12.0	12.1	12.3	12.4	12.6	12.7	12.9	3
13.0	13.2	13.3	13.5	13.6	13.8	13.9	14.1	14.2	14.4	4
14.5	14.7	14.8	15.0	15.1	15.3	15.4	15.6	15.7	15.9	5
16.0	16.2	16.3	16.5	16.6	16.8	16.9	17.1	17.2	17.4	6
17.5	17.7	17.8	18.0	18.1	18.3	18.4	18.6	18.7	18.9	7
19.0	19.2	19.3	19.5	19.6	19.8	19.9	20.1	20.2	20.4	8
20.5	20.7	20.8	21.0	21.1	21.3	21.4	21.6	21.7	21.9	9
0	22.2	22.3	22.5	22.6	22.8	22.9	23.1	23.2	23.4	10
	23.7	23.8	24.0	24.1	24.3	24.4	24.6	24.7	24.9	11
	25.2	25.3	25.5	25.6	25.8	25.9	26.1	26.2	26.4	12
	26.7	26.8	27.0	27.1	27.3	27.4	27.6	27.7	27.9	13
28.0	28.2	28.3	28.5	28.6	28.8	28.9	29.1	29.2	29.4	14
29.5	29.7	29.8	30.0	30.1	30.3	30.4	30.6	30.7	30.9	15
31.0	31.2	31.3	31.5	31.6	31.8	31.9	32.1	32.2	32.4	16
32.5	32.7	32.8	33.0	33.1	33.3	33.4	33.6	33.7	33.9	17
34.0	34.2	34.3	34.5	34.6	34.8	34.9	35.1	35.2	35.4	18
35.5	35.7	35.8	36.0	36.1	36.3	36.4	36.6	36.7	36.9	19
37.0	37.2	37.3	37.5	37.6	37.8	37.9	38.1	38.2	38.4	20
38.5	38.7	38.8	39.0	39.1	39.3	39.4	39.6	39.7	39.9	21
40.0	40.2	40.3	40.5	40.6	40.8	40.9	41.1	41.2	41.4	22
41.5	41.7	41.8	42.0	42.1	42.3	42.4	42.6	42.7	42.9	23
43.0	43.2	43.3	43.5	43.6	43.8	43.9	44.1	44.2	44.4	24
44.5	44.7	44.8	45.0	45.1	45.3	45.4	45.6	45.7	45.9	25
46.0	46.2	46.3	46.5	46.6	46.8	46.9	47.1	47.2	47.4	26
	47.7	47.8	48.0	48.1	48.3	48.4	48.6	48.7	48.9	27
	49.2	49.3	49.5	49.6	49.8	49.9	50.1	50.2	50.4	28
	50.7	50.8	51.0	51.1	51.3	51.4	51.6	51.7	51.9	29
	52.2	52.3	52.5	52.6	52.8	52.9	53.1	53.2	53.4	30
	53.7	53.8	54.0	54.1	54.3	54.4	54.6	54.7	54.9	31
	55.2	55.3	55.5	55.6	55.8	55.9	56.1	56.2	56.4	32
56.5	56.7	56.8	57.0	57.1	57.3	57.4	57.6	57.7	57.9	33
58.0	58.2	58.3	58.5	58.6	58.8	58.9	59.1	59.2	59.4	34
59.5	59.7	59.8	60.0	60.1	60.3	60.4	60.6	60.7	60.9	35
0	61.2	61.3	61.5	61.6	61.8	61.9	62.1	62.2	62.4	36

Calculated by Julien A. Hall, M. Am. Soc. C. E.

Judicial Road . . . Cass & Aitkin Co

139-25 = 51-27

Monday April 3rd 1911

worked all day at Walker copying field notes of 139-25 and checking up plats and sending for notes off Tap 51 R. 27. 4th Monday got in 1. day for Cass & Aitkin Co

Tuesday April 4 1911.

Cass Co Commissioners meet at Walker and we discover error in description of Judicial road and Mr. Perry and I are called to Bemidji to explain before Judge Stanton.

Judge orders the survey made any way and recommends that two crews of surveyors work so I go back to Walker to get Todd.

This is my 2nd day for Cass and Aitkin.

RR fare Walker to Bemidji & back

31 miles x 31 miles = 62 @ 8⁰⁰ = 4.96

Apr 3rd

4.00

4

4.00

in 4 miles

4.96

8.96

Judicial road (7)

Cass & Aitkin
Counties

139-25
51-27

Wednesday Apr 5th 1911 I. Telephone

Harry S. Todd and he comes from Jenkins
to Walker and we take the night train
from Walker to Bemidji Over night at
Markham hotel

Apr 5 1911	Todd one day	4.00
"	Milag Walker To Bemidji 31mi	2.48
"	Cuts one day	4.00
"	Milag W. To Bem 31 miles @ 8°	2.48

Apr 6th 1911 Thursday

Todd & I come down on the Soo
Bemidji to Swatara where we are met
by team & driver of John Bulbreck and
taken to his place where we stay over
night.

Apr 6 th	Harry S Todd 1 day	4.00
"	R.R. fare Bemidji To Swatara 74mi	5.92
"	Cuts one day	4.00
"	R.R. fare Bem To Swatara 74mi	5.92

Colins

(5)

139-25
T51-R25

April 7th 1911

John W. Cull. Transitman
Harry & Toad Assistant Engineer Transit
B. L. Perry John M. Buttrick Alfonso
also special Commissioners
Frank also, Alvin also a man
Elwin also & Henry also Chain
worked B. L. Perry & I chained for them

Reg at stake set for the NW cor of T50 R

27. we run S on 7°30' Var in swamp

K. E. Transit = 300 foot chain

@ 300, 600, 900 set stake in swamp @ 1050

LV Swamp bears SE & NW @ 1114. cen of winter

road bears SE & NW @ 1155.35 Hat

on raise 1200 set stake; @ 1450 ft enter swamp

@ 1480 Hat on sea wall @ 1485 enter Edna

lake @ 1500 stake on ice @ 1710 LV lake.

1800 set stake @ 1860. 48 Hat 30 feet West of

lake shore @ 2035. enter lake @ 2100 stake on

ice 25 ft E. of lake shore 2259. 40 tack in

log on point in edge of water @ 2400

stake on ice 2700, 3000, 3300, 3600,

3900, 4200, 4500, 4800, 5100, stake on

ice @ 5400 Hat on ice double cen

@ 5670, LV lake @ 5674.25

MCN-5. bears East 25.55

at 5678.40 Hat on sea wall

5700 stake 6000 stake 6300 stake

@ 6144.35 line 1/4 on E. side of sec 24-139-25

nts East 7.95 feet @ 6148.45 Hat

⑥ 139-25
51-27

April 7-1911

John W. Curo Eng one day	400	
Walked 10 miles @ 8°	80	\$4.80
Harry J Todd Assistant Eng	400	
10 miles home	80	\$4.80
B. L. Perry Commissioner one day	300	
10 miles walk	80	\$3.80
Alfons Olds Commissioner 1 day	300	
10 miles home @ 8°	80	\$3.80
John M. Buttrick 1 day Comm'	300	
10 miles home	80	\$3.80
Frank Alder ox man 1 day	200	
miles home		
Alvin Olds a man 1 day	200	
miles home		
Henry Olds Chmn 1 day	200	
miles home		
Elwin Olds Ch 1 day	200	
miles @ 8°		

Worked all day on Collins bet Conn & Alvin

Friday Apr 7-1911 5 men worked

@ TMCN-5. South side of Edna Lake

Go out miles call for 4 pins 10 S 73 W 35 lbs
We find the pins standing plainly marked 23.10 ft
from which we set the line M.C. angle turned
from a back sight on line line a mile North
This should have been 15" links instead of
"35" but we have to set it as 35"

At the 1/4 on E side of 24-139-25 go out
miles call for - soft maple 5 S 25 W 17 lbs 9.24
= 9.24 ft aspen 10 N 85 W 27 lbs = 17.82 feet

We find the maple standing plainly marked and
the stump of the aspen from which we set a
square stake for the line 1/4 part

Elwin Earl Olds
Alvin Eugene "
Howard B. Stratton

Judicial road ⑦

139-25

51-27

Saturday April 8 1911

I goe Perry 200 and rigas home to
Rocky Fork to Savatara

John W Curo & Henry S Todd Transit men
Alfonso alds, BL Perry, John M Buttrick Commis
Kenny Olds (Dove Station) a man in Aitkin
cut brush North from Kenny Station. Kenny got
hit with a limb
Frank alds, alvin, Elwin alds worked in
Coss Co

Henry S Todd Transman.
Elwin alds & Todd ch alvin & Frank alds
as men at the 1/4 bet Secs 13 & 14 - 139-25
Govt. male call for W.P. 7S 62E 17 lks = 11.22
Aspen & West 10 lks = 6.60 feet W. find Oak 13T
Stamps standing plainly marked from which we
set the line 1/4 post from line corner @ 8°30' N
measurements check out within 0.15 (2 inches) &
we set stake by proportional measure and
dime hub & back set new bearing trees as
follows:

Birch 8346°20'E 36.08

±

Aspen 14 N 23°E 25.80

" to Tackhead

Run East on 8°30' N

@ 300 pin 578 Hub on hill 600, 900, pin
1200. pin 1320 Temp 1/16 post 1348.96
Hub quit for night & back up

Curo & Alfonso alds go to So line of sec
14-139-25 and check up Moulstus pin

Curo - Todd - Buttrick - Alfonso alds -
Frank - Elwin - alvin alds worked in Coss
BL Perry Dove Station - Kenny Old in Aitkin Co

139-25

8

51-27

Sunday April 9-1911

Henry Alder Roy Stratton worked in Alkin Co &
They begin at NW cor Twp 50-27 and cut a pocket
line East

Curo - Todd - Bulluck along old.

Elwin - Frank - alvin Alder - now Devel

Stratton worked in Cor. Co

Devel Stratton & Frank Alder cut brush & from
114 on W side of 13-139-25 and the rest of us go
to SW cor of Sec 14-139-25 where Gout notes
call for White Birch 7 N 40 E 12, aspen 10 N
50 W 30, aspen 6 S 40 E 13, Oak 6 S 52 W 32.

We find a 7x4 post previously set by me
for the line corner set from old Gout B.T.S. &
a cut-out cleant line run East by
Wm Moulster. I take the bearing of the cut out
line while Todd and Alvin & Elwin Alder
chain it & check up on Moulster's old Huber

Reg @ line SW cor 14-139-25 Ch East
9045' Var @ 35 feet end of open bog @ 200 ft west
90 ft S of mid land @ 250 W bog follow N. edge
at 375 W bog (Bog extends 600 ft South)
@ 799 set Hub @ 944. 25 Hub. 1823. 50 Hub
2548. 50 Hub on hill at 26.22, line 1/4 on S
side of Sec 14 sets South 93. feet
Correcting book

26.22 goes S 93. ft.

1823. 50 " " 64.70 ft.

944. 25 goes South 33.48 feet

799 " " 28.38 "

Moulster has a hub and correction stake set
only 21. ft so I will call his attention to this
mistake.

at the 1/4 on S side of 14-139-25 Gout
notes call for: - W 36 S 14 E 11. W 36 N
14 W 19. We find a 7x9 post set by Moulster for the
line 1/4 post from old Gout B.T.S.

Reg @ 1/4 on S side of 14-139-25
means East on Moulster's cleant line
@ 7030' Var @ 300, 600, 900, 1200, set stake
1375. 10 Hub @ 2350 end of open bog @ 2640
line SE cor 14 bear N 77. feet
along O. & I chain west 690 ft 15 1950 where hat
ought to be and chain 57 ft N and drive
flat stake not marked or good center
stake. whole will rolling under
cotton pine stumps.

139-25

9
PM.

Apr 9 - 1911. Contd

51-27

Harry S Todd Transit Curo + Todd Rk
 Shore station Alvin (Snider) old cut brush
 Reg at line 1/4 on E side of 14-139-25 run S.
 8° 45' on @ 401.50 Hot hill up @ 564 cross road
 bears NW TS @ 866.50 Tack on sp stump
 1200 ft in 2 rod bog 1431 Hot on hill and
 changes to 8'20" @ 1600 st slope. Lutes open
 swamp bears SE + S. at 1650 v. same 1900 ft
 1969, 70 Hot grass for night.
 E. Alvin + Frank old cut brush full 1/4 on E side
 of Sec 14-139-25. North

139-25

10

51-27

Monday Apr 10-1911

Henry olds and Wm Stratton begin at
SE cor spec 33-51-27 and cut brush East
on 7' or and work all day in ashin co

Buttrick- affords olds. Cuss + Todd, olds try
+ done right work in cor co

Todd- liant + ch. Cuss co.

Done straton alvin olds Reg & Hvt 1969.70
and Corliney South at 2225 enter open top
at 2637.75 set pin True SE cor 7/14-189-25
west west 32.30 feet
Correcting back

we set hut 1969.70 west 24.12 ft
1431 west 17.52, 13/8.90 and chain
west 16.15 ft and set square small stake for
temporary 1/16 post 806.50 west 10.61 ft
401.50 West 4.91
This half mile heavy timber Rich + Balsm hills

At cor to spec 13-14-23-24-139-25

Got notes call for

Tam 3 S 20 W 60 LKs = 39.60 ft

" 6 S 62 1/2 E 110 LKs = 72.60 ft

" 10 N 85 E 240 " = 158.40 ft

W. Rich 7 N 76 1/2 W 450 LKs = 297.00 feet

We find a 4x4 pin post set well into the
swamp by A.W. Moulton a year ago from the old
Ant 137.5. but done Stratton says none of the
BTS were marked.

While we are doing that Elwin + Frank
olds are cutting brush from the 1/4 post North.

P.M.

Todd liant, Frank olds + Elwin olds of
men + chain

Reg at 1/4 on E. side of 14-139-25 back
right liant 40 on preliminary line + run
V. set pins 13x14 over brush ground
at 50 cross E + W road at 771.50 Hvt.

at 971.50 Hvt 1200, 1500, pin 1578.90 Hvt
1800 pin 2046.70 lock in log 2107 pin enter

oaks + spruce swamp at 2400 pin

at 2622, line NW cor 13-139-25 bears E - 78.30 ft

Correcting
2622 guess E. 78.30, - 2046.70/guess E 61.12

1578.90 guess E 47.15 - 971.50/guess E 29.01

774.50 " " 23.04

11
PM

139-25
51-27

Curo-Love Shatton & Alvin Olds
walk to NW cor of 13-139-25
where Gout holes call for 1-11-12-13-14
139-25

W Cedar	6 N 60° E	25	LKS =	16.50	ft
Spice	6 N 45 W	37	" =	22.44	"
"	4 S 25 E	24	" =	15.84	"
Cedar	12 S 50 W	27	" =	17.82	"

We set the corner from the NE & NW B.T.S.
which are standing plainly marked flat etc from
face of marker after which they stand O.K.
SW B.T. is down 8 E B.T. 200.

I start Love Shatton & Alvin Olds cutting
line East on picket line @ 9° 30'
and quit for night

139-25-
51-27

12

Tuesday Apr 11 1911

Heavy alps. w. m. Shatton & crew work all day
in alt. in Co. W. walk to 1/4 bet sees

33 x 34 T 51. R 27. 44 m

where Gout Vales call for
Tom 10 for corner

Spruce 8 N 17 1/2 W 14 lbs

" 5 N 16 E 17 "

We find the NW BT down but plainly marked
and the 10 inch Tam 1/4 cor standing plainly
marked. I start a line E & N at 7:00
and leave Shatton & alds to cut it out
and on account of rain stop home at
2 P.M.

Todd Transit

Frank-Elwin-alvin alds leave Shatton
Reg at line NW Cor 13-139-25 + run East

@ 8:30' on line heavy Tam & cedar swamp

@ 300 p.m. 560 L 1 sup 564.10 Hwt 600 p.m.

enter Birch & W P timber @ 838.30 Hwt

900, 1200, p.m. 1383.75 Hwt 1500, 1800, p.m.

1865.60 Took in log scaling Birch &

Small white Pine

2100 p.m. 2250 enter lull sup 60 ft wide

100 long @ 2310 L 1 sup 2400 p.m. 2482.90 Hwt

2646 L 1 sup 1/4 foot

at 2586.65 line 1/4 cor hands South 170.40

feet

at the 1/4 cor bet sees 13 x 12 - 139-25 Gout

vales call for WB 9 S 10 E 17 lbs

WB 47 N 10 W 21 lbs

We find the SE line standing plainly marked

from which we set the corner at 8:30' on

Correcting

Hwt 2586.65 goes S 170.40 -

1865.60 goes S 122.90 - 1383.75 goes 91.16

838.30 " S 55.22

664.10 " S 43.75

13

139-25

51-27

Wed Apr 12-1911

Henry, Olds & Wm Shalton cut brush all day in Ailkin Co East thro sec 34 T51 R27

The rest work was in Corrs @ 4 PM on line between the two counties.

Todd Transit man. Elmer, Alvin, Frank & Alfonso Olds arriving 10 am. Matter Beg @ 1/4 on N side sec 13-139-25 run East @ 300, 600, 613.45 Hot 650 sup 720 L.V. sup 900 pin 1100 enter belly dig creek bed 1140 L.V. same 1200 pin 1235.50 Hot 1250 enter then sup 1400 L.V. same 1500 pin 1544.30 Hot 196560 Hot 1800 pin 196560 Hot 2100 pin enter dig sup 2350 L.V. same 2438.40 Hot @ 2683.60 tree cor sets 3 65 feet cornering back 2433.4 gress 58.94. 196560 gress 47.61 1544.50 gress 37.41 - 1235 gress 29.91 ft 613.45 " S 14.09

PM

at the SE cor sec 12-139-25 four nails call for Fir 3S 45W 25 lks = 16.50 ft

Birch - N 75W 23 lks = "

We find the Birch standing plainly marked and the root of the Fir from which we drive a nail for the true corner after which both BTS stand perfect for course and dist.

Set New BTS as follows

Birch 12S 53° W 136.77 ft

Maple 9S 64° 37' E 33.42 ft to lock heads

On 8:30' lances from line N to line

Run N 8° 30' W

@ 300 stake 563.95 lock in log

600 pin 900 stake

Cut for north

139-25
51-27

14

Thursday Apr 13th 1911

Todd Transit some station
Frank, Alvin Elwin & Reginald's work all
day at Co line.

Henry Olds and Wm. Shattuck work all
day at Alvin & Cutting N from 1/4 on W side
of 34-51-27

Todd Beg @ Hat 563.95 N of SE Co 12
139-25 cor. line north. 600 pin 900 pin
955.50 Toek in log 1200 pin 1421.25 Hat
1500 pin 1617.40 Toek in log 1650 culm low
ground Birch, Tans & Elm 1800 pin
2100, 2400, pin 2522.40 Toek in log
2640.90 Tule 1/4 on North E 15.78 ft
At the 1/4 on E side of 12-139-25 lost
water call for Soft Maple 10N 75W 57=
7 Birch 8520 W 38 E

W. Fred bath B.T.S. standing green plainly
marked from which we set the line 1/4
by flat measure from face of B.T.

Beg at 1/4 on E side of 12-139-25 just
set at cor. line north
300, 500, pin 502.25 Hat 761.70 Hat
800 pin quit for night

See page 19-

15 139-25
51-27

Friday Apr 14-1911

Henry Olds & Wm Stratton work all day
in field as all the rest work on
Co line.

Todd Hannit, Alfonso Olds, Frank Olds
E. Wm Olds, Alvin Olds, Louie Stratton
Reg at Hot 761.70 N of 1/4 on E side of 12-
139-25 + continue Hannit line North
@ 800 pin 1006.20 Hot 1200 pin 1442.30
Hot 1500, 1800, pin 1840.75 Hot
2100, pin 2369.55 Hot in road 2400 pin
2642.72 line on stands E 52.60 feet

at the NE cor 12-139-25 Gout notes
call for WP 20 S 35 W 31 chs = 20.46 ft
or 14 N 10 W 16 = 10.56 ft

We find the stump of the WP plainly
marked from which we set the true
corner

PM

Todd & crew walk N NW cor sec 34-T51 R27
and run E out over line cut out by Henry
& Wm

at the line NW cor 34-51-27 Gout
notes call for
fir 3 N 40 W 8 = 5.28

Maple 6 N 15 E 32 chs = 21.12

" 10 S 57 W 22 = 14.52 ft

Birch 8 S 70 E 18 = 11.88

We find all & set the NE BT and set
Hot for line cor by measurement
and run E on 700

@ 300, 600, pin 900. Hot 1141.80 Hot
1200 pin, fairly level spruce oak & Birch
1382.90 Hot 1500, 1800, stake 1969.40 Hot
2100, 2400, stake 2473.20 Hot on hill
2681.20 Took in log on top of big hill

Thence down hill 2700 stake
2742, New wagon road bears NW &
SE Louie Stratton cut his leg
Quit for night

139-25

16

57-27

Saturday Apr 15-1911

Clide Olds works in place of Louie
 Shattuck and Roy Shattuck works in place
 of Wm Shattuck all day in afternoon
 cutting line along N side of sec 34 T51
 R27

Harry Olds works in place of Henry Olds
 and Alvin Olds work in afternoon
 cutting west thro cen of sec 33-

Caro & Buttrick walk to NE cor
 26 T51-R27.

Todd, Alfonso (reg) Olds Elwyn &
 Frank Olds work in Corn Co in AM.
 and Alvin Co in PM.

Reg @ 1/4 on W side of Sec 13-139-25 run E
 @ 1300, pin 578, Hwt on hwt 600, 900, 1200 pin
 1320 Temp 1/16 Hwt 1348.90 Hwt 1500 pin
 1737.85 Hwt 1800 pin 2068.95 Hwt 2100,
 2400, 2700, pin 2759.68 Hwt 2850 ent
 Swamp 3000, pin to top, 3300, 3600 pin
 3750, 45 Hwt 3900, 4173.90 Hwt
 4200, 4500, pin 4547.50 Hwt 4650 ent
 Swamp, 4800 " 5100, pin 5302.30 Hwt
 in 21 lin
 @ 5 True 1/4 on E side of 13-
 bears

PM.

Going 1/4 on E Sec 33-57-27 run west
 @ 300, 600, pin 720 ent Swamp 900 pin
 920 L Swamp 1093 Hwt 1200 pin 1426.90 Tack
 in end of log 1500 ent 1644.00 1520 L
 bog 1800 pin 1932.70 Hwt 2100 pin 2350 Hwt
 2400, 2700, pin 2981.40 Hwt in old
 running line at a point 1028 ft N 7 SEC 12-139-25
 @ line 1/4 on west side of 33 bears

139-25
51-27

(17)

Sunday Apr 16-1911

Curo, Todd, Buttrick, Rg, Henry and Alvin
run the south line of sec 26 and sec 27 - T51
R27. Roy Slatton & Clyde Alder cut line south
from NE cor sec 26.

Reg @ Hub 2681.20 on E. of NW cor 34-51-27
where bone slatton cut his leg on chain East
@ 2742 New wagon road bears NW & SE
thence down big hill @ 3000, stake 3300 Hub post
7 hill 3600, 3900, stake 4000 Hub
@ 4165 Cor. of S. end of new School House bears
N 78. feet @ 4300 stake 4462 cross wagon
road bears NE & SW @ 4600 stake. 4732
cross same road bears NW & SE
@ 4745 Hub 4800, 5700, stake @ 5287.35
line cor to sec 26-27-34-35-51-27 sub Natt
70.15 feet

at this point boat holes call for

WP8526 / E11 LKs = 7.26 feet

Bosswood 4S 48W 10' = 6.60

Fin 6 N 50W 28' = 18.48 feet

Bosswood 6 N 35E 28' = 18.48 feet

We find the S.E. B.T. standing plainly marked and the
root of the NE B.T. from which we set a hat
for line corner by measurement from face of
B.T. after which they both stand perfect
for course @ 7'00'

Correcting back

5287.35 goes North 70.15, 4745 N 62.95
at hub 40 Chain west 34.49 to Hub 3965.51
then N 52.61 set 2x4 for line 1/16 cor west of
School house 41.65 goes N 55.25
leaving the new school house 22.75 ft from
road cor of 10.25 ft inside of road limits

3300 goes N 43.78.

2681.20 goes west 37.52 1/8 Hub 2643.68
then N 35.08 where we place the line
1/4 cor on N side sec 34 - T51 R27
Harry met Greener

Frank and Elwin ground their axes

18 139-25 51-77

Sunday Apr 16-11

Bag @ S W cor 26-T51 R27 run E 700-
@ 11. wagon road bears NE & W @ 300 yds.
392.70 Hgt 600 slake enters creek bottom
650 Culvert site 780 LV creek bottom stone pit
900 slake 931. Hgt 1070 Culvert site
20 foot bog NW 1200, slake 1425.50 Hgt
1500. 1800 fm. 1980 ent swp 2075 as same
2092 Hgt 2100, slake 2225. Hgt then down
slope 2300, slake 2400 Culvert site
2619 Hgt 2700 slake enters open swamp
3000 slake 3300 Hgt in swamp
at 1/4 on so side of sec 26-T51 R27
Gout notes call for aspen 6 N 41 W 11.
Brick 85 80 E 25

a dead pop stump marked "B.T."
on west face 4 feet above ground stands north
of our line but this is note Gout B.T.

We go back and correct so side of
see 27. on page 17.

51-27
139-25

19

Monday Apr 17-11

Curo Todd always olds. Baltuck
Henry olds. Frank E. Lwin - always olds
Elyde olds + Roy Shallen worked

Beg at a point 17 feet south of line NE cor
red 33- T 51 R 27 we run west 7200
@ 269 Hubs 514 Hub 910.50 1505 Tackin
stamp 1853 Tackin stamp. 2555.40 Hub
@ 2650 line 1/4 on N side of Sec 33, sets S.
7 feet

Beg at line 1/4 on N side of 33-

run west 7100 @ T 51 420.65 feet Hub
in N 75. Cut out line @ 755 ft the C.C.
set by the boat runners on line 3 14.15 feet

at NW cor 33 T 51 R 27 boat makes call for
WP 24 N 75 E 62 LKS = 40.92 feet
Br oak 12 S 29 E 54 = 35.64. we find both
stamps plainly marked from which we
set the north by flat measure from pole
of B.T. marks

Correcting

20

139-25
51-27

Monday Apr 17-1911 Continued

Correcting E side of SE 1/4 Sec 12
 139-25.00 per page 1/4
 we set Hub No 563.95 East 3.38
 " " " 955.50 " 5.73
 " " " 1421.25 " 8.52
 " " " 1617.40 " 9.70
 " " " 2132.25 " 12.80
 at 2640.90 true 1/4 sec East 15.78

Beg @ SE Cor 12-139-25

Tied + I Chain South along the cut-out
line

@ 260 enter Tam sup E & W 300.600 pin

660 L & Swamp 900.1200 pin

@ 1327 a Birch tree. sketched on E fence into
west of cut-out line.

@ 1400 enter open swamp.

1450 Cross road in swamp E & W

1500 pin 1635.30 interest. C.C.

at S.W. cor T 5N R 2)

139-25

51-27

21

Tuesday Apr 18-1911

all worked & kept Henry olds who lost half
a day in P.M. going to the lakeall turned in and cut out the line on
E & S side of sec 26 T51-R27
and chained it in the swamp

Reg @ Ht 3300. in swamp E of SW cor 7
26. 51-27 we see page 18. we continue E
@ 3535. LV spun swp. 3600, 3800 pin. 4042 Ht
4200 pin 4458. Ht. offset $1\frac{1}{2}$ ft N on
account of trees on line. found it 4500,
4800, 5100 set pin @ 5206. offset $1\frac{1}{2}$
ft. south and line cor. set of with 75.70
feet.

at SEC. 26-S-27 Goat Valley call for

W Birch 53 24 $\frac{1}{2}$ W 36 = 28.76 ftTarn 6 S 7 $\frac{1}{2}$ E 28 = 18.46 "Maple 7 $\frac{1}{2}$ N 35 W 20 = 13.20 "

W P 10 N 4 E 54 = 35.64 "

We find the NW & NE B.T.S. from which
we set the line cor and drive a 4x4 post

As our cut out line falls E of the line
corner post set

Reg @ a point 68.15 ft E of SE
cor sec 26 and run N. 7° W

rough chain

@ 211 Ht 540 lock in log @ 878 Ht 900, 1200,
1500, 1800 pin 1900 lock in log 2100 pin
2210 new road E.T.W. 2400, pin 2562 cross
ETW fence about 50 W of cor
2700, 3000, 3300, 3600, set stake 3650 Ht
marked "1674" set by stadia measure
South of NE cor 7 26.

showing the total distance 5324 ft from
Ch @ 3800 enter swamp ETW @ 3900 pin
3985 enter lake @ 5050 L.L. lake cut swp
@ 5324 the line NE cor sec 26-T51-R27
in Tarn swp.

Frank & Elwin Roy Shotton Clyde Olds
Alvin? worked.

22

139-25

51-26-27

Apr 19-1911

Henry olds begins at line $\frac{1}{4}$ post on
N side of sec 34- T51 R27 and cuts track
to the picket line set by me.

all the rest of the line to East
and work with Todd

Reg @ line SW cor 24 T51 R27 run N 70°
Todd - Tinkum & Ch @ 375 to Tanssup

967.90 Hat 1/85 main old wagon road
Etw. 1200 pin 1201.73 Hat 1347.70 Tockin
root 10 ft 20 of Wood River ^{1235 top of high sand bank} and 75 ft west of
Dorn. 1540 L.V. river. 1568.50 Tockin log
1647.30 set stake plus 52.70 = 1700. 15 stake
1689. road NW + SE

2000 stake 2350, stake 2311 Cross road
NW + SE. 2413.50 Hat 2600 stake 2640

Temp 1/4. B.T.S. gone. @ 2900, stake 3047.50 Hat

3200. 3500. stake 3685.90 Hat on hill

3800. 4100. 4104.85 Hat

4400 cut sup 4623 L.V. Sup 4767.95 Hat

4862 cut sup 4921 L.V. sup

4960.40 Hat 5000 pin

@ 5300. line cor set west 9. feet

at NW cor sec 24 T51. R 27 4-out

Notes call for: Maple 8 N 44 1/2 E 17

Tam 8 N 14 W 29.

ap 16 S 18 E 26

7m 8 S 88 W 13

We find the maple Tam & aspen standing
plainly marked from which we set the
cor by flat measurement from
Correcting South

at Hat 2640 we chain N. 10 ft to Hat

2650 Then west 4.50 ft where we find
the line $\frac{1}{4}$ post on west side of sec 24.
T51. R 27

Elwin, Frank, Claud Olds, Alden
Roy Shotton &.

Albin Olds & Todd Ch

I leave at noon and go to Swanton
and Remedy Todd continues the survey

13925
51-27

23

Apr 20 - 1911 Thursday

I arrive home at Hock at 1.30 am.
Told works on survey of Swatara
runs in his notes of fallow.

Beg @ 1/4 on W side of R 24 - T51 R 27
run E 7.6 on @ 93. Hub 300 slake 595 Hub
600 slake 700 ent sup 900 + same
1200 slake 1394 Hub 1500 pin 1800 slake
1972.50 Hub 2100 slake 2203.30 Hub
2400 slake 2700 " 2788.1 + Hub
3000. slake 3300 3485 lock in log
3600 " 3770 Hub 3900 slake #200 slake
4371 Hub 4500 slake 4600 ent N ledge
worms 4800 " 4850 L sup
4904. Hub 5100 slake 5280 temp 1/4
on E side sec 24 T51 - R 27
where Gout notes call for Quadruple
branch.

Abner, Elwin, Frank, Claud, Henry
also Roy Hutton as men
John Buttrick & Todd Ch.

The above came in a letter from Todd.
who is still on the job. end.

24

139-25

51-27

Friday Apr 21. Todds notes for this day are as follows:-

They at limp $1/4$ past (5280 E)
 on E side of ref 24-51-27 continue
 limit line E 7.00
 @ 300, 448.35 Hub 600, 670 Hub 900,
 1081.50 Hub 1200, cut low ground
 1500, 1800, 2100, 2246.50 Tochim log
 2400, 2700, 3000, 3080 Tochim log
 3300, 3507.50 Hub 3600, 3798. Hub
 3900, 4200, 4500 cut swp
 5100, 5300, at 5379.75 line $1/2$ sets
 N 1127.10 feet angle of the two lines
 not taken just trim up slate road at
 about 7.00 Quit for night
 Same crew worked worked

139-25 25-
51-27-26

Saturday Apr 22nd 1911

all worked except Frank Olds.
Beg at Cor 17-18-19-20-T51-R26
set cor from SW R.T. the other being gone
run to along cutout state road
@ 295 cross ditch 300 stake 399 cen of
200 H.R. 600, 900, 1200, 1251.10 Hub
1500, 1800, 2100, 2175 Hub 2400, stake
2640 Temp $\frac{1}{4}$ post 2700 stake 3000

at about 2640 so the line $\frac{1}{4}$ on W
side 720'-51-26 line $\frac{1}{4}$ sets west
about 51.20 feet

at the $\frac{1}{4}$ bet secs 19-20-T51-R26 four
masts call for

Brownwood 16 N 22 E 26 Lks. = 17.16 ft

Oak 12 S 38 W 28 " = 18.48 "

We set the line $\frac{1}{4}$ from the SW Oak stub
which stands plainly marked.

Record ^D 163

Walker June 28-1911

Business men of Walker go to Soc

June 29, 1911. Copied notes all day at Walker up to midnight and catch night train to Hatched sack to get part of survey outfit on my way to 133-30 to sett sec corner Hatched 1⁰⁰ RR for 27.

June 30th 1911. To Hatched sack at 10 A.M. Arr Sylvan 2 P.M. R.R. fare 1.45 Hatched Exp 1⁰⁰ P.M.

Establish meander corner on E side of Sylvan Lake. Bill Jones team get survey outfit at Sylvan. Out night with Jones.

July 1st 1911. Bill Jones + team take me to Pellager where I stay for dinner + supper I find M.C. on N bank of Crow wing river but cannot find South M.C. look for sec corner
back to Jones over night

July 2nd 1911 Sunday.

Chas Palmer, Willis Rundel assist me in survey of. Breakfast with Jones who takes his team and drives me to several section corners going to corner of sections 3, 4, 9, 10 - 133-30 Govt. lands east on

Black Pine 6 N 34 W 30 L 45 = 19.80 feet

"	"	7	N 37 1/2 E	27	"	17.82	"
		5	S 11 E	12	"	7.92	"
		8	S 18 W	44	"	29.04	"

We find the NE stump plainly marked "BT" and the root of the SE + NW stumps

We set a wood Hub in line corner point face of the NE B.T. 9' for
An up turned green GP about 20 ft SE is marked "B.B." with a jack knife showing that Barlett has been here some time but this is marked high up and is not an old Govt B.T.
the people at first that it was

John W. Curo

(3)

133-30

Sec 9-10

27

PM.

July 2nd 1911 Continued from the line corner of 3-4-9-10 I start a line North and another west at 90° then go to 1/4 between 9-10-133-30 where goat notes call for

NP 14 S 30 W 34 lks

" 16 N 84 E 32 "

We do not find any stumps. This is at the N end of the long "corderoy" graded road and at the south foot of the big hill road is graded half a mile from here south but as the grade only runs on 5' or there will be a big crook in the line and some surveyor must have made a big mistake.

We shall see!

Going half a mile south to the corner of sections 9-10-15-16-133-30 goat notes call for

Black Pine 6 N 72° W 132 links = 87.12 ft

" " 10 S 35 E 223 " = 147.18 "

Norway " 20 S 71 W 206 " = 135.96 "

No. 1000 trees

We can't find unit and believe this corner is too far west

Daniel Moone who has lived on

SE SE Sec 9-133-30 for 12 or 15 years says

W. H. Hallett set this post years ago by bringing a line up from the west 5 or 6 miles but the dam old fool was crazy

I am going to run it in

Going to the 1/4 bet Secs 15-16-133-30

Goat notes call for this at a point 1.80

chains so of NP RR with 13 TS by

Jack Pine 6 S 74 W 8 lks

" " 6 N 38 E 22 "

find nothing and quit for night
Dinner and over night with

Roger

Bill Jones got in one day with team

Chas Palmer + Willis Kierulds one day for
corn or at a Ch man

Kuffel + Essner team 300 foot Chicago

steel tape

John W. Puro

July 3rd 1911

Chas Palmer and Willis Rundal Chas

We take Palmer's mule team and drive over into Morrison Co. via Pillager to corner to

Sections 15-16-21-22-133-30 where four males call for a post and the following bearing trees

Black Pine	10 S	19 W	282 lbs
" "	6 S	54 E	50 "
" "	6 N	59 E	89 "
Birch	6 N	57 W	23

We find the place well marked with fence corner and one SE green standing old B.T. on which I write "CURB"

Walking North along the fence to Crow Wing River

We find the fence corner for East and at the M.C. between 15 & 16 on So bank of Crow Wing River four males call for

Lynn	12 S	30 W	45 LKS = 29.70 feet
Hornbeam	6 S	46 E	12 " = 7.92 "

We set 3x30 oak M.C. 10 ft from water from fence of SW B.T. 89° W

It stands tall and green plainly marked. We find the root of the SE Hornbeam

I write "TRUE M.C. Set by CURB"

We drive 10 N side. by river by way of Pillager and work transit on line @ 9° W. Then Palmer & Rundal decide to chain across deep river

Reg @ M.C. on So bank run N 9° W

@ 238.50 flag pole in River. Then

170.50 15 ft pin on N bank of river 10 feet from water making 409. feet

Then plus 16.04 feet to station 425.04

set temporary M.C. on N. bank

Where four males call for

WP 14	N 2 1/2 W	147	lbs =
-------	-----------	-----	-------

" 16	N 56 E	135	"
------	--------	-----	---

Stumps appear to be burned and are

containing	N.	+ plus 27.30	set for
------------	----	--------------	---------

@ 452.34	Then plus 47.66
----------	-----------------

@ 500 set stake & quit for night

K & E Transit 300 ft chain

Dinner with Palmer. Walk to Bill Jones for supper Palmer & Rundal get in full day. No pay for mules

John W. Curo

(4)

133-30

29

4

3

Ches. Pol.
man

9

11

10

Wm. H. Brown
v

12

16

15

July 4-1911

Breakfast with Bill Jones
 Rained fearfull last night
 got early dinner with Jones and he
 and I with his team drive to Gull
 Lake Corn where I meet W.C.
 Snyder C.E. and instruct him
 as to the establishment of M.C. No. 48
 Jones inspects the Packer
 wait road and Gull Lake
 road I look up the bearing lines
 to cor sec 28-134-29 and I am
 get back to Jones late
 supper and over night with Jones

July 5 1911

I, Chas Palmer, Willis +
 Rundel work all day in Cess &
 road survey
 Beg @ stake N= 500 set North of
 M.C. on N side of Crow Wing River but
 continue transit line North bet
 Secs 15-16-133-30
 @ 662.60 Hub 800 stake
 1100. stake 1296.30 Hub 1400 stake
 in stump in cen of EXW old road
 @ 1600 stake round fearfull
 cut out line to a point North of
 N.P.R.R. and quit for night
 Breakfast with Bill Jones who drives me
 to my work. Dinner with John
 Harrison sec 15-133-30
 walk to Sylvan and drive with Jones
 team to Jones to get letters and
 field notes ride with me & quit
 back to my work
 walk back to Sylvan and telephone
 Harry Todd supper and over night
 with Geo Romsdy Hotel

July 6th 1911

Big @ stake vs 1600. continuing north
@ 1680 enter dry creek bottom
@ 1780 L^{ts} same bears E & W

1900 stake 2142 cross
road E & W 2200 stake 2262.50 Hub
2366.70 wire RR fence @ 2419.60

Center of N.P.R.R. track 2472.20 wire

RR fence 2500 stake @ 2508 Cen. of

crossing and Ottertail road E & W

2736.80 Hub 2800 stake @ 3050

enter E. end of open meadow 3100 stake

3400 stake L^{ts} " " S E (Hay road)

@ 3535.60 Hub 3700 stake.

4000 stake Rogers, Rundel, Palmer worked
Palmer Ch. dinner with Rogers

A.M.

4100 L^{ts} on these old roads E & W

4300 stake in old road NW SE

4305 Hub 4600 stake

4710 enter open meadow

4810 wire fence E & W
4900 stake in meadow 5175 L^{ts} meadow

5200 stake 5209 Hub 5500 stake

Crew cut line north and Todd & I hunt for
Bearing trees.

Charles Palmer, Willis Rundel, Sumner R.

Rogers & men work all day

Harry & Todd arrives from Park

Rapids at 2 P.M.

I get dinner with Rogers

Todd & I supper and over night with

Mr. Ranzy at Sylva

July 7-1911

Todd Linsdemon I chain
Rogers Randell, Palmer & open
we cut brush all A.M. at
Moons corner and believe we have
found some of the old B.T.S.

P.M.

Rogers and Randell Cut brush
North Robert Phillips appears
on the ground
Palmer and I Chain perfect Todd Linsdemon's
going to the corner to set
10-11-14-15 133-30 Goat nails call
Black Pine 8 N 50 W 12 this = 7.92 feet
" " 14 S 74 W 142 " = 93.72 "
" " 8 N 64 E 41 " = 27.06 "
" " 12 S 21 E 67 " = 44.22 "

We find all four trees plainly marked
except the S.W. one and this has been
barked all trees stand perfect in
course We set the corner by flat
measure from face of B.T.

Set out N.W. and S.E. trees is
0.90 feet longer than Goat chain and
the S.W. & N.E. trees set is 1.57 ft
shorter than Goat chain we set a tree and
lock for the true corner by proportional
measure after which the trees stand as
follows:-

B.P.N.	W		ft
" Slump 14. S 74 W		7.78	ft
" " 8 N 64 E		92.51	"
" slab 12 S . E		26.70	"
		43.46	" V 9°

Bag @ true corner just set we run
West on 9° 30' box
@ 270 enter open meadow
300, 600, set stakes 700 enter Island
800 + same 900, stake 1000 solid
point of land from the South
1200, 1500, 1800, 2100, 2400,
2700, set stake 2800 to meadow
3000, stake 3151.70 Hub 3300,
3600, stake 3861, Hub 3900, stake
4027.50 old post for fence going
South.

July 7-1911 continued

@ 4200, stake 4500 Hat
 4800 culis meadow 5100, 5300,
 stake 5400 Hat 5610 main N+S
 road 5700, 6000, 6300, 6600
 6900 set stake Then chain 1020 ft
 west and look for BTS. 15
 1/4 bet secs 9x16 133-30
 when short vales call for

all gone Quit for night

Rogers, Palmer, Randall, Card
 Todd got in full day for Cars
 Co

Todd + I get breakfast with
 Remzy at Sylvan I pay 150. for our
 board dinner with Palmer I
 pay 75¢ to bal acct

I gave Phillips \$2.00 exp
 money and this him

K+E Transit 300ft Chicago Tape.
 supper and over night with Rogers

Todd + I Supper and over night
 with Rogers

July 8 1911

breakfast with Rogers
I pay him \$2.00 in full for my own
board and told him I pay him later
I give Todd \$5.00

I make out Palmers acct
for 5 days up to time July 7-1911 \$10.00
Rundall the same
Rogers July 6 & 7 \$4.00

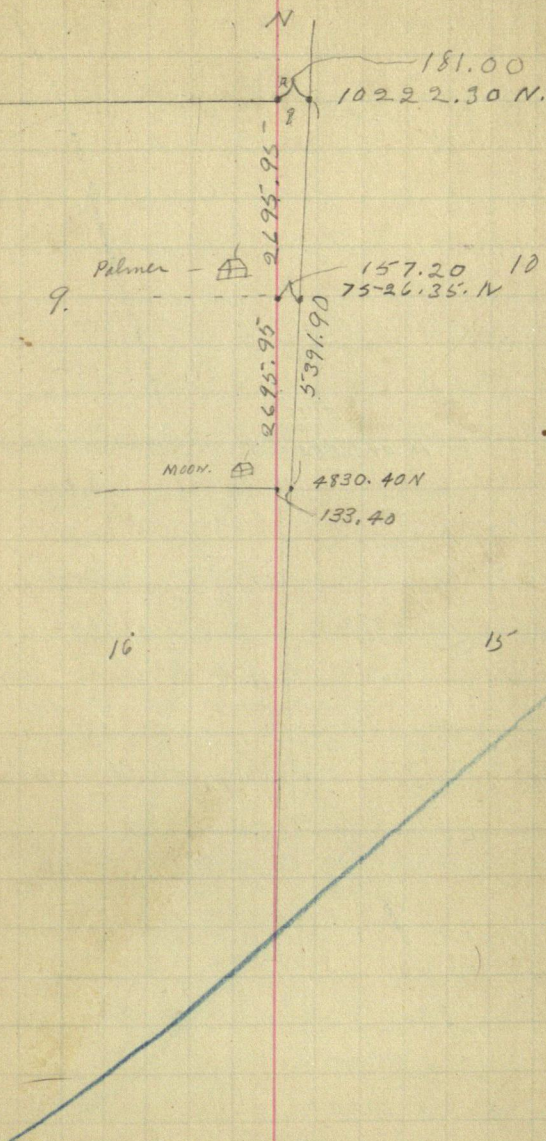
Wilson Rundall S K Rogers
Chas Palmer

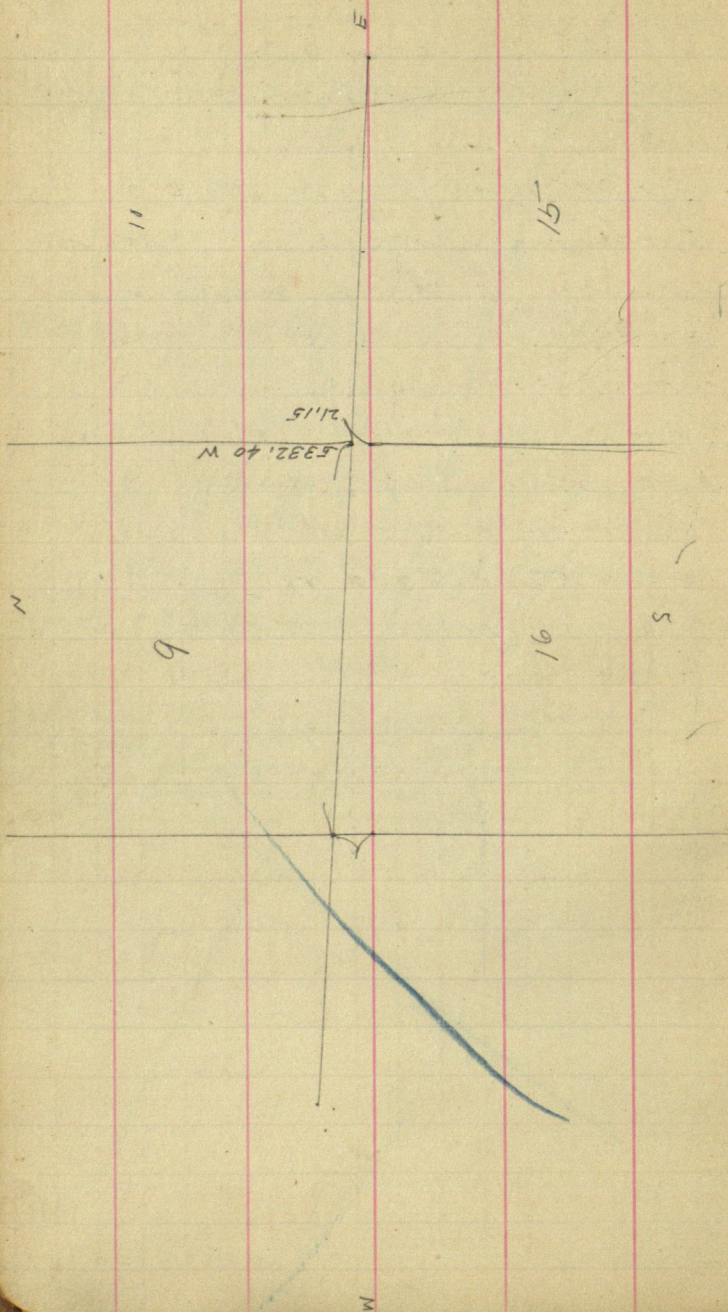
Going North between Secs
15-16 and 9-10 133-30 from
W.C. on S. side of Crow wing river

@ Station 4830.40 the prospective
corner to Secs 9-10-15-16 bears
West 133.40 feet

and

running West from line corner to
Sections 10-11-14-15 133-30
at Station No 5332.40
the prospective corner to Secs
9-10-15-16 bears South 21.15 ft-





July 8 1911

Curo goes back to Walker & d.
continue his line north

Reg at Station 5500 continue
north on east side sec. 9-133-30
5633.50 Hub 5700 enter open meadow
5800, 6100, 6400, 6700, 7000, stake
7125 leave meadow enter foot hills
7300 stake 75-26.35 wire fence
enter open field. 7600 stake, 7720.10
Hub, 7900 bottom of large hill.

8200 stake, 8219.70 Hub. top of
hill. 8500 stake, 8659.40 Hub
~~9000~~ 9049.90 Hub. 9100 cross

rail fence and enter open field
9400, 9700, 10000 stake @
10222.30 true cor, 3-4-9-10-

133-30 sets West 181 ft. I start
Randall in cutting brush north from
the cor and Palmer & d go back
and correct the line over.

Over night at Pillager.

Chas. Palmer Wilson Randall

183-30 July 9 1911

We go to Cor. 3-4-9-10
and start a line north @ 9°
Cure has been here before us
and set the cor.

@ 800, 600, 900, stake
950 cross rail fence, 969 Hub
1200 stake 1265 rail fence
E + W. 1298 center of old road
E + W. 1500, 1800 stake
1973 center of wagon road
11 E + S.W. 2100 stake,
2230.25 Hub 2274 Wagon
road bears N 15° W. 2348
Wagon road bears N 15° E.
2400 stake 2640 temp by post
we look for Bts here but
as we find nothing quit
for night. Over night

@ Rogers.

Chas. Palmer, Wilson
Randall S. R. Rogers.

133-30

July 10 1911

Continued line north
on E side sec. 4-133-30

@ 2694 Hub. 2700 stake

2998, 70 Hub. 3000, 3300 stake

3464.70 Hub. 3600, 3900

4200 stake 4284.90 Hub.

4500, 4800 stake, 4924.50

Hub 4992 center of road E & W

@ 5069.70 true cor. sets

west 98.20 ft. We find two

of the Bts. plainly from which

we set the corner. Then flat

measurements from face of

Bts. after which we correct

the line over. quit for

night. over night @ Pillager

Chas. Palmer, Wilson

Randall B. K. Rogers.

correcting

4 post goes south 67.30 ft

to west 41.45 ft.

① Thursday Sept. 21-1911 41
133-30 Cass Co.

Worked all day in office at Walker on
field notes and records of the new
County road at Pillager on South
side of Sec 16-133-30 one day for
Cass Co.

Sept 22nd 1911 16-133-30

Walker to Pillager RR fare
\$2.23 dinner. Charles Johnson

and I go to the corner of Secs
16-17-20-21-133-30 where goat nubs
east for BP 10 N 36 E 81. BP 10 N 41
W 101. BP 10 S 38 E 16. BP 8 S 20 W 58 lbs

By digging with a shovel we find a nub
in the center of the wagon road set
by the Morrison Co. Surveyor lost some-
times from all fence corners
and it is very near correct

P.M.

I go to the M.C. cor on N side of Crow Wing
River bet Secs 20 and 21 where
Goat nubs east for

Oak 14 N 61 1/2° W 92 lbs = 60.72

WP 40 N 15° E 83 " =

I find the oak standing plainly marked
Went to the Fair and met Miss
Proper of Little Falls also met
Dr. Thayer who says the Villa-
Schaltica. Leuluth is a good place to
send the kids. Dinner + over night
with Mrs. Bailey.

42 Pellager 183-30

(2)

Saturday Sept 23rd 1911

Monkied all A.M. getting iron corners cut. I get a piece of 2" galvanized pipe 18 ft long, of Mr. E. P. Bacon and have Mr. the blacksmith cut it in 5 pieces 2, 4 ft and 3, pieces 3.30 ft long and bored through the bottom and cross pieces put in 4, of them 1 ft long half inch iron. P.M.

John P. Hansen and I dig up the wood hut at the corner to Section 16, 17, 20, 21 and find a stone 3 feet under ground plainly marked on 4 sides Stone 6 x 6 x 18 inches and across in top end of stone sets 2 inches NE of cen of wood hut so we preserve the point of cen of stone, at which point we set a 2" pipe 3' 3" long in a bed of cement for the true corner this pipe sets directly on top of the stone. Mrs Wood & son Mrs Helen Staples of Little Falls and Mrs Herick of go to the merry-go-round in evening and night with Mrs Bailey.

Sunday Sept 24 -11

John P. Hanson Ed Parks and

I go to MC. N. side River bet 20 & 21 Wapind
out NW plainly marked and stamp of W/P
from which we set pt for MC by flat
measure from face bore hole thro
bridge drop. Plumb to bore hole and
set 1 1/2 in gas pipe 8 ft long in cement
for line rule. Beg @ 16-17-20-31
run 3 9-15.10 @ 300. - 562, 60. Hub-600
900, set match. 987.14 @ 987.14 Hub
1187.19 Hub 1200, match 1320 three little
Pegs 1500 pin 1748 end of bridge
1800 pencil mark on bridge 1802.75
again hole over MC.
To correct back 1320 should go North
35.99 feet to 1284.01. but we do not set it.
1853.28 feet 60 ft chain = 1802.75 ft my
chain is 50.53 ft short
On S. line of 16- Frank Crow cut line in A.M.
and W. Mann in P.M.

Beg at MC hole in bridge set chain N on
the line 277.20 and set pin in road
Cen 38 ft W of Burtons lat 1. Then 16.50
feet more to Hub 293.70 being 38 ft W of
Burtons NW cor and direct hub.

Curving

(44)

Warranty Deed of Johnson &
Liza Johnson his wife

Beg at Meander stake on the
river bank of Lot 1, on line bet 20
+ 21 - 133-30 N 33 ft E of sec line
16, $4\frac{1}{5}$ Rods = ^($1\frac{1}{5} = 3.30$ ft) 277.20 feet to a
stake for corner

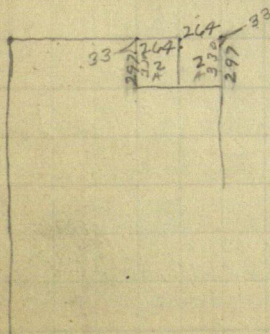
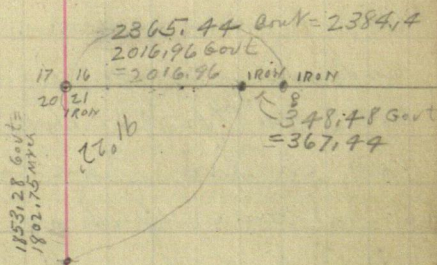
Then East 12 Rods = 198.00 ft
Then N 72° E 7, $4\frac{1}{5}$ Rods = 128.70 "
to a stake for corner. Then South to
river bank; then West along
said river bank to point of
starting containing $2\frac{1}{2}$ acres
and will be known as out Lot
No 1. Johnsons addition to Pillager
Town when platted the same
being now surveyed
Sadd to W.A. Burton

July 27-1906.

EP Bacon
Notary.

133-80 N

45



Monday Sept 25 1911

John P Hansen Ed Parks and I #413
Transit. 300 foot chain

Beg @ Cor to Secs 16-17-20-21 - Run
E $10^{\circ} 30' N$ @ 300, 600, 900, stake

1130.25 Hat 1200, 1500, 1800 stake

1900.90 Hat @ 1948.40 Hat

@ 2016.96 small Hat in meadow

from Hat 1948.40 + a stadia read-
ing of 436. fut = 2384.40 ft

my chain M. Co. on E side of Crow

Wing river bears N 14 feet

correcting back we set Hat N $^{\circ}$

1900.90 North 11.16 feet and drive

but on line then cut brush E. and

west as a check up and find it OK

@ Hat 2016.96 we chain North 11.84 ft

where we place a 1 $\frac{1}{2}$ " galvanized

pipe 8 feet long set in a bed of

cement for the true meander

corner on the west side of Crow

Wing River on line between Secs

16 & 21. but will not finish setting it

til morning. Cont Notes East on Oak 10

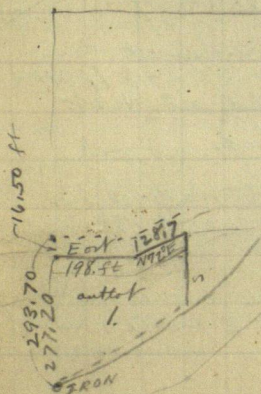
N $2^{\circ} W$ 97 lbs Elm 20 367 W 103 lbs

We find old roots which check out perfect

Sept 25-1911. Continued
going west to stake 1200 w/ chain
120 feet East to 1320 Then plus 2.
links = 1321.32 feet being the
distance given by the Government
plot we set a hat. Then chain
North 7.76 feet where we set the
line 1/16 foot by driving hat

going west to Hat 1130.25 w/ chain
North 6.64 feet and drive hat & put up
back shot

We went to M.C. on E side of crow wing
out 16 & 21 where Nalis call for NR 22 S
6' W 73 lbs = 48.18 feet Elgin 8 N 32 E + 9
links = 32.34 feet We find stumps of NR
plainly marked from which I set far Iron
2 inches & 4 feet in a bed of cement for
bias me.



1321.32
195
2016. 49
109
61.18
67.99
28

Sept 26-1911

Pillager

J. Ed Parks, Carl Seyerine
and W. Mann work all day.

Setting transit at cor 15 sec 16-17
20-21 focus theodolite on line line East
Needle reads $10^{\circ}45'$ Then theodolite
south 15 m in Bridge angle north
 $91^{\circ}22'$ but W line to N line of sec
21. at NW cor.

Beg at Cen of Lower
Boulevard on sec line 298.70 feet N of
m.c. run East parallel to N sec line
($91^{\circ}22'$ angle) @ 33. feet set Hub 16.50 ft N
of W A Burton description
Thence East 198+33 = 231. feet set Hub
16.50 ft N of Burton land

Then N 72° E & N. by as bore)

Beg @ 1 $\frac{1}{16}$ Hub @ NE cor of Lot Lat N-1

Sec 21. turn theodolite E. on back
shot then turn South $91^{\circ}22'$ and
run parallel to W. body of sec 21
@ 33. ft set Hub S. road limits
@ 330 feet set Hub SE cor Creamery

land. From $\frac{1}{16}$ cor run West on sec
line 264. feet and set NE cor of Cement
block "2. acres" then run South 33. and
set Hub then 297. feet more and at
330. feet set Hub for S W cor of
Creamery land

From a hub set 264 and 264 =
528. feet West of NE cor of Lot 1, we
run South parallel to West

body 33. feet set Hub for road
limits then 297. feet to Hub 330
and set S W cor of Cement Block
two acres.

The 33. foot road is measured
in with the Creamery 2 acres and
the cement block 2. " and
they cover the ground.

Sept 26-11. Continued

M.C. bet 20-21 on N side of
Crow Wing river is station N^o 0.
Station N^o 1. is on the sec line
293.70 feet N. of M.C. and 16.50 feet
N of Burton description. turn lit-
escape on auger hole in bridge
and swing East $91^{\circ}22'$ angle
and run E out parallel to N 6 day
@ 33 feet set Hub 16.50 ft N of Burton
land and @ 198 feet further on
being 231 feet from sec line set Hub
16.50 feet N of W A Burton's land

Sta 2, N 72° E 128.70 feet to Sta 3.

" 3 South Parallel to West boundary
to river set limp stake

at Sta 3, we put in bearings as follows:-
back 10 N $47^{\circ}11'$ E 38.18 feet

" GP 145 53° E 29.56 feet to rock
heads driven in the trees $\sqrt{10^{\circ}45'}$

Sta 3, run N $85^{\circ}30'$ E 300 feet to Sta 4

" N^o 4. run N $76^{\circ}30'$ E 155 ft to Sta 5

N^o 5 " N $61^{\circ}16'$ E 601.70 feet to Sta 6.

being a Hub 1119.85 feet South of
NE cor of Govt Lot No. 1. 1875 Vig

GP 10 $988^{\circ}8'$ E 37.68 feet

" 8 N $53^{\circ}29'$ W 59.13 " to Tack heads

Begin at NE cor of Govt Lot 1, we run S.
parallel to West boundary of sec 21

@ 330 feet @ 630 feet @ 930, Hub +

199.85 = 1119.85 thence to Hub N^o 6

Sept 26-1911 continued

Will forks dig up old $\frac{1}{4}$ cor bet
16-17 and in P.M. I put in a
2 in pipe 4 ft long ^{no cement} dig up Hoban
lock and old cor steel shoe

at this point Fort Valis call for
Willow 4 N 23 W 14 lks

B. Gilead 6 N 57 E 128 lks

We find the root of a willow which
sets perfect for corner and measure

Work transit on line bet $\frac{1}{4}$ cor just
set and iron cor to sec 16-17-20-21
run South: @ 300 pin, 400 pin

470 cen of small bridge 3 ft E of E end
@ 700 pin, 1000 pin, 1006. cen of side
track, 1062, cen side track

1100.70 cen main line 1300 pin 1352.60
cen cement walk, 1353.70 cross cut in
cement walk 1600 pin 1900 pin, 2200 pin
2500 pin, 2640.20 iron corner
to sec 16-17-20-21.

helped 2 hours in P.M.

133-30

(5)

Sept 26-11 continued P.M.
going to Sta N=6. run $N 66^{\circ} 28' E$
398 feet to Sta N=7

Sta N=7 run $N 32^{\circ} 18' E$ 255 feet to

Sta N=8. Rained in P.M. but we
worked. Supper on night hall
with Mrs Bailey.

Wm Parks got in $\frac{1}{2}$ day and Geo
Parks $\frac{1}{2}$ day but we put it all
in to Wm and he can pay Geo

Sept 27-1911

Willard S. Mann, Asst
Seymour and Ed Parks put in 1/2
day in A.M.

Beg @ sta ⁸ run N 13° 2' E @ 300
pm 545 creek runs SE from SW
600 pm @ 635 Hit sta 9.

Thence N 7° 7' E 143.60 feet to
Sta 10 to Hut on sec line
33 feet West of M.C. bet 16-21 on
W. bank of Crow Wing River

At MC N^e - on West side
of Crow Wing River on sec line
between Section 16 & 21-133-30

We set a 1 1/2 inch galvanized pipe
10 feet long in a bed of cement
for the true M.C. from the root of
the old S.W. bearing tree

Going to the 1/16 set 1320 feet
East of the corner to Sections
16, 17, 20, 21 we pull up the hut
and set an iron 1/16 of 2 inch pipe
3 feet long for the true 1/16 no cement

S 133-30

(53)

Willard, Mann. worked

Monday Sept	25-1911	0.5 days
Tuesday	26	1.0 "
Wednesday	27	0.5 = 2 days \$4.00

Record 163

Cars Co.

143-28

(55)

Jan 13-1912

Leave Walker on P. M. train
for Bemidji. Arrive at
Bemidji 6:10 P. M.

R. R. fare 97¢

Jan 14-15-1912 all day
in Bemidji.

Jan 16-1912

Leave Bemidji @ 9:47
A. M. Arrive at Federal Dam
11:25 A. M. I get dinner at
the Restaurant and then
walk down the track to
A. J. Swanberg's camp. We
come back up to Federal
and see A. S. Martin. I
find out where the road
to be surveyed is and all
get a boarding place at
City Hotel. Got in one day
for Cars Co.

56 Cass Co.

143-28

Jan 17-1912

We go to $\frac{1}{4}$ cor. on N Side of
sec. 3-143-28 where Gov.
notes call for

POB 10 S 20 E 20

POB 6 N 10 E 16.

We find the S.E. Pt. standing
plainly marked and the stump of
the N.E. Pt. which had rotted & blown
down. We set the cor with
one new Pt. as follows.

Birch $\frac{1}{4}$ N 48° 10' E 11.30 ft.

We then run a line E @ 8° 30'

V. @ 261 set tack in log 865-

cross old wagon road bears

N 45° E. 965.30 Hub. 1320 set

temp $\frac{1}{4}$ cor. a $\frac{1}{4}$ cor. set by

canfield bears South 25 ft.

1500 west bank of RR yards

bears S 45° E 1600.40 Hub on

E bank of same yards bears

S 45° E. 2139.40 Hub. @ 2649 true

sec cor between 2 & 3 on temp

line bears S. 5 ft.

Here the gov notes call for.

Jan 6 S 30 W 3 Jan 6 N 75 W 6

Jan 10 N 40 E 8

Carlo continued 143-2857

We find the NE & NW Bts.
standing plainly marked from
which we set the cor.

Quit for night, Over night at
City Hotel.

H. F. Comstock H. A. Wesenberg
J. M. Grover A. S. Martin.
Assisting in Survey

58 Cass Co

143-28

Jan 18 - 1912
Beg. @ cor. of 2 & 3 on
sup line where gov. notes call
for. Jan 6 330 W. 3. Jan 6 N
W 5 Jan 10 N 40 E 8.

We find the NE + NW
tree standing plainly
marked from which we
set the cor. The SW
tree being gone.

We then run East at
7030 V. We do not
do any chaining.
but just cut line
thru heavy Jan
sup.

put for night
B. F. Comstock

H. A. Wessberg

J. M. Grover, C. B. Martin

Cass Co.

143-2859

Jan 19-1912
Chaining East on cutout
line from N.E. cor. sec

3-143-28. @ 226 cross
lagging road bears N 45° E

@ 266 cross same road bears
S. 75° E. 1112 Hub. There

is three old bearing
trees here that is marked
up on the cor. N.E. cor.

sec. 3-143-28 but the
3 tree ~~is~~ is a little

too far away to check
out with field notes

We leave that for
now and continue East.

@ 1334.40 set hub opposite
another $\frac{1}{16}$ stake 1392

R R ditch about 5 ft wide
bears. N + S. 1960 Hub in
old road bear N + S.

@ 2669 true cor bears South
8.5 ft. We find both
pts here after which we
set the cor. Same
crew worked.

60 Cass Co.

143 - 28

Jan 20 - 1912.

We go to $\frac{1}{4}$ cor on north side sec 3 and set an iron post 4×48 in the ground for cor. We drove it

thru the frozen ground.

We then go to $\frac{1}{4}$ on W side sec. 2. Where

we set a like post for cor. We put no

new pts. here as the

old 1800. trees were

plain. We then

go Ad 4 cor. between secs. 2 & 3 where gov. notes call for. Barch 8 N 28 W 8.

Spruce 9 S 62 E 10

We find the stub of the birch & stump of

spruce both plainly marked for our work.

We set the cor. at 8° V.

We then cut a line North @ $28^{\circ} 30'$ Var.

Cut a half mile of line and quit for night. Same crew.

Cars Co.

143-2861

Jan 22 - 1912

We go to the $\frac{1}{4}$ cor
previously established
& set by me and run the
line north. @ 586 cross

R.R. ditch bears $N 60^{\circ} E$
681 cross logging road bears
 $E + West 1369.50$ Hub. 1384
cross logging road bears
@ 2573.50 turn ~~and~~ $N E$,
Cor. sec. 3 - 143-28 bears
West 204.80 ft.

We check the line over
and then go to a point
on our corrected trap line
where said line intersect
800 R.R. right of way
and run a line $N 30^{\circ} 25'$
W 696.50 to a point ~~of~~
opposite single track
between tracks and then
run $S 72^{\circ} 22' W$ 350 ft to
a 25 ft alley in Townsite.

Quit for right
G. A. Wessling, J. M. Grover
Assisting

62 Cass Co.

14328

Jan 23 - 1912

B. A. Wensberg and I go
to 1/4 between sec. 2 & 3
previously set by me
and put in a pipe cor.
4 x 48 inches.

We then go to N.E.
cor sec. 3 - 143-28
and put in another
there. No new Bls.

P. M.

B. A. Wensberg + I take
Comstocks: compass and
pace a line East from
W. on N. side of sec. 2
We find nothing and
quit for night.

Harry S. Todd.

Sec 7- 145-31 (A)
① May 18th 1912 Cross Lake 63

Harry S Todd and I
quit the Ole Berg survey
at Jenkins on account of
not having any more iron
monuments and catch the
3.35 P.M. train from Jenkins
North. I stop off at Walker
and catch the 6.14 P.M.
train to Cross Lake to work
for Bob Jarvis, Henry
Seley and Collin

Todd goes this to
Bernidji and will come to
Cross Lake tonight

John W. Cuss

Sec 7-145-31. Con Lake
Sunday May 19th 1912

Todd did not arrive in
night train and Seely, Bob
Jarvis + I drive to Jarvis
and telephone Benidji to
tell that Todd is sick
dinner at Jarvis camp - Fish!
P.M.

Todd arrives from Benidji
and Jarvis brings him to Sec
7-145-31.

At the 1/4 on So side of
Sec 8-145-31 I find that the
1/4 corner established there four
years ago has been graded out
by the new Soo R.R. 103

My old notes call for the follow-
ing bearing trees

✓ Jack Pine 10 S 33° 27' W 22.80 ft
" " 8 S 29° 30' E 36.30 "

We find the tall stump of the SW tree
standing plainly marked and the
short stump of the SE tree cut
below the marks Todd drives a
lock in this stump.

(2)

(3)

Cross Lake May 14 1912

continued

(65)

at the corner of Secs 7-8-17-18
I find that post I once established
there has been pulled up.

On Aug 18th 1906 I found all
four old U.S. bearing trees at this
point where Govt. notes called
for a post and the following bearing
trees 7-8-17-18-145-31

$9 P 14 N 58^{\circ} E 398$ Lks. (= 262.68 ft)

" $12 S 5 W 348$ " (= 229.68 "

" $9 S 3 E 291$ " (= 192.06 "

" $16 N 3 W 900$ " (= 594.00 "

We found all 4 the old trees but
they did not check out for
measurement so we proceed
to locate the corner propor-
tionately as follows

Run a straight line from old
B.T. in Sec 7. to the one in 17.

Govt chain was 786.06

Ours " " 788.50

Overlength 2.44 feet

set a hub proportionately
between them and run a
short picket line 90° West

Over .

John W. Curo

(66)

① Cass Lake May 19-1912
Sec 7-145-31 continued

We chain from B.T. in Sec 8.
S 58° W 262.68 set hut marked "B"
Thence S 5° W 229.68 feet to
B.T. in Sec 18. Setting transit
on hut B. I take the angle of
the two lost lines run and
on a mean course run S E to
an intersection of with my
picket line where I establish
the true Section Corner to Sections
7-8-17-18-145-31 at which point
I find the old Government stake
this which I dig a good big
Lamarac post.

Cass County road builders
working under the direction of
the Cass County Commissioners
have pulled up my stake,
grubbed out the old N.W. B.T.
and graded up a county road
in such a way I am unable
to re-locate this corner without
again going all over the work.

We find the NE, SE, and SW
lines from which I re-establish
the corner by measure from the
Datum curve 184

Cross Lake May 19-1912 continued

Sec 7-145-31

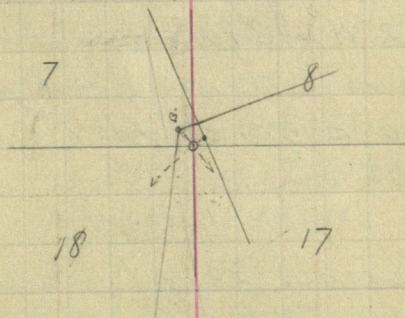
E

(67)

face of the old "B.T." marks I
drew a hat and lock for the
true corner after which a lock
in the old SE. tree bears

$S 3^{\circ} E 192.68$ feet A lock in old
SW B.T. bears $S 5^{\circ} 17' W 220.54$ ft

Establish new bearing tree as
follows Jack pine $N 85^{\circ} 38' E 160.83$
feet to lock head I mark this
tree "New B.T." "Cure" @ 8' or



At the $\frac{1}{4}$ cor Bet Sections 7 and 8-145-30
I find my old hat set for the true
 $\frac{1}{4}$ cor from old Govt Bearing trees
Four years ago I established new
bearings to this corner as follows:
Jack pine $N 61^{\circ} 25' E 63.70$ feet
" " $N 69^{\circ} 52' W 44.52$ "
measured to the approximate
heart of the trees. I find the
John W. Cure

(68)

(7)

Cross Lake

Sec 7-145-31

May 19th 1912

NE tree standing plainly marked
and the newly cut stump of the NW.
tree. I set a new hat and tack
for the true 1/4 Corner between Secs
7-8 - 7145-31 and drive new
locks in the face of my new bearing
lines as follows: Tack in NE B.T.
bears $N 61^{\circ} 25' E$ 63.19 feet
Tack in stump of NW B.T. bears
 $N 69^{\circ} 52' W$ 43.80 feet Make a new
bearing as follows: Jack pine 4
 $S 37^{\circ} 30' E$ 70.30 ft. to tack head
@ $8^{\circ} 50' Var$

K + E Transit 300 ft Chicago Steel
tape Harry S. Todd + I Transit men
and chainmen.

Henry Sealey, Bob Jarvis, L. Corlton
as men Supper + over night with
Sealey.

169

John W. Cucco

⑥ 7-145-31

(69)

Cross Lake May 20-1912 Monday

Todd & I working for Jarvis &
Callon subdividing a part of sec
7-145-31 K+E transit 300 ft ch.

At the $\frac{1}{4}$ cor on W. side of sec
7. Goat holes call for:-

BPine 10 S 50° E 36. Links 23.76 ft ^{stands} S 48° E

" 7 S 30° W 11. " 7.26 " ^{stands} S 21° W.

We find the stumps of both old lines
plainly marked from which I set a
3x36 inch oak stake and tack
for the true $\frac{1}{4}$ corner and mark new
bearings as follows to nail heads @ 8°45' ✓
Jack pine 15 N 38°33' E 38.46 ft
" " 12 S 35°43' E 39.58 "

Alto

Harry

Ex men

cut a wide swath of timber a few
hundred feet E. to Little Wolf Lake
so that I can see the $\frac{1}{4}$ on E
side of sec 7. then work the transit
on line and put up a backshot
with square white paper and
from the $\frac{1}{4}$ on E side of sec 7
I back sight on this back-
shot which equals the line
John W. Ellis

7-145-31^(H) Cor. Lake May 20-12
70) of night with the $\frac{1}{4}$ on W. side of
Sec 7 then turn telescope on a
flag at SE Cor and my angle
reads $82^{\circ}6'$

The E & W Cen line of Sec 7 runs on
about $14^{\circ}15'$ the E. line of the SE
 $\frac{1}{4}$ of 7 runs on about $6^{\circ}00'$

At the $\frac{1}{4}$ on S. side of Sec 7-
145-31 bet Secs 7 & 18 trout notes
call for:

JP 10 $N6^{\circ}E$ 140 LKS (= 92.40 ft) 107

Tam 12 $S8^{\circ}W$ 159" (= 104.94")

We find the JP standing green plainly
marked and the tall stump of the Tam
from which we chop out the old scribe
marks. We find the measurement.

between trees to be 6 feet short so set
the $\frac{1}{4}$ cor by proportionate measure
via corner from face of figures
after which a look in old B.T.

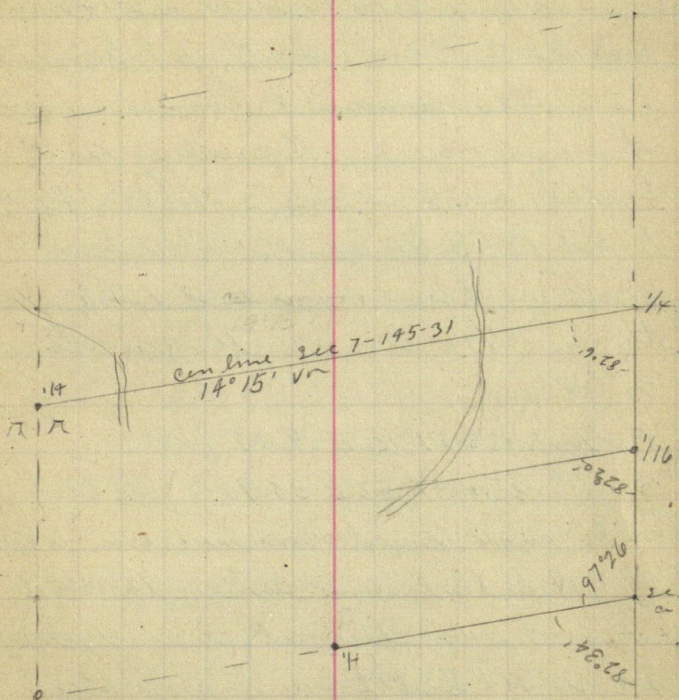
bears $N6^{\circ}E$ 89.60 feet Tack in old

21" SW Tam stump bears $S8^{\circ}W$ 101.60 feet
New B.T. viz nail drove in 10 inch bushy
topped Jack pin not blazed bears
 $N74^{\circ}7'E$ 144.80 feet
John W. Curo

(I) Corral Lake May 20-1912

(71)

Sec 7 T.145 R.31.



With transit @ SE cor of sec 7 I read
the angle of the $\frac{1}{4}$ on E. b dry with
 $\frac{1}{4}$ on S. b dry: angle reads $97^{\circ} 26'$

Jahmaw Curo

24

May 20 - 1912

Corr Lake (J)
7-145-31

72)

Beg @ $\frac{1}{4}$ on E side of sec
7-145-31. run South on line line
@ 1320 from @ 1500 stake @ 2940.
line SE on bears South 67.20 feet
@ 2707.20 intersect lock in hut
at line corner. Correcting North
@ stake No 15 on chain North 146.40
to Hut 1353.60 south at which
point we drive a hut and lock for
the line $\frac{1}{16}$ corner with new bearings
as follows:- 194

JP stump 123 27° 15' E 9.02 feet

" " 15N 37° 52' E 38.90 " to lock

14 Reads angle turned from line line N 80.

(Note) With the transit set on this $\frac{1}{16}$
corner I run the South line of Govt.
lot No 3. S 82° 20' W to the water's
edge but do not chain the distance

Taking the E. line of SE $\frac{1}{4}$ as a
meridian I find the South line of
the sec runs S 82° 34' W to the $\frac{1}{4}$ on
and the cen line runs S 82° 6' W
clear across the section so that
a mean course would be S 82° 20' W
at which course I run the line between
Jarvis and Carlton lands

John W. Carr 25 92 47
3112

Con Lake May 20 - 1912

7-145-31

(K)

(73)

I set a hub 33. feet west of the $\frac{1}{4}$ to show Mr Carlton the road limit then I drive a row of long hubs and locks west along the line south line of Govt Lot No 3. about $\frac{1}{4}$ mile to the waters edge of Little Wolf Lake

All take dinner at Bob Jarvis camp supper and over night with Lyman Carlton

Jarvis has half a dozen of his men cutting brush in P.M.

I do not charge anything for my time but charge them \$14.00 for Todds time & expense

Jarvis pays me \$8.00 cash

Carlton is to pay me \$6.00

74)

(2)

Cross Lake to Walker - Pine River

Tuesday May 21st 1912

Lyman Corlton drives Todd and I
to train at Cross Lake and we
come to Walker.

Todd goes on to Pine River
to survey for Pine River Traps.

I stay in Walker

John W. Carr

①

Mr Mitchell Claressa ? Minn
Land Agt - Deer hunter from
Renne. Cur met at Cass Lake
Nov 27 1913.

Nov 29-1913 Mike Kannon's land
4 parcels @ \$15⁰⁰ an acre 10%
for selling. Half cash down
about 145 acres ²⁹⁷⁻¹⁴⁵⁻³¹

Ben McKinnon Rose's Story
farm "Jack Pine Story farm"

Montana 20,000,000 acres HE
= 125,000 farms @ 160 acres each
Oregon 10,000,000 acres HE
= 62,500 farms of 160 acres each

76

Nov 19-1913

①
Coss Lake Cemetery
Sec 9-145-31

Pillager To Walker in
P.M. At Walker 5 P.M.

Set up all evening copy-
ing notes for the subdivision
of Sec 9-145-30 for the purpose
of surveying a cemetery for the
Village of Coss Lake

Thursday Nov 20-1913.

Lo Walker @ 3 AM train
for Coss Lake By way of
Benedji. At Benedji 4.25
A.M. Fare 64¢ M+S. Ry

Lo Benedji 9.54 AM.
Via Soo Ry Fare 32¢
At Coss Lake 10-30 A.M.

Look up Mayor A. W.
"Andy" Johnson. and hustle a
crew P.M.

Geo. Dedrick and I work on
digging up iron monuments on
South side of SE 1/4 of Sec 9-145-31

Harry S. Todd.

Friday Nov 21-1913.

Rained and snowed all day could not work

I am staying at Boston Hotel Coss Lake

Saturday Nov 22nd 1913.

Harry S Todd Translucian
H & B Transit almost perfect
adjustment. also chained
300 ft Chicago steel tape
plumbob chain - perfect

Chas A La Bell Chain &
flag. Iver Anderson &

We go to the mon $\frac{1}{4}$ cor
between Sec 9 and 16 -

145-31, set by Co Surveyor
Confield, and recorded by
Co Surveyor Curo where we
find the old S E Bearing tree
stump still standing from which
we check the mon $\frac{1}{4}$ cor and
find it correct - Run North
thru Cen of Sec 9 - 145-31
Mag on $7^{\circ}35' E$

Harry S. Todd.

Cross Lake Sec 9-145-31
 Saturday Nov 22nd 1913 Could
 @ 413.50 ft cross cen of
 main line of Aoo RR. bears
 E+W. @ 1201.60 set hub & lock
 @ 1326 cross cemetery fence
 E+W 8.50 ft E of SW cor
 about - , @ 1985.45 Hub & lock
 @ 1989, cross cemetery fence - E+W
 @ 2083, Hub & lock @ 2640 Hub &
 lock temporary centre of Sec
 9. being Hat A" N=1.

2674 cross wire fence bears E+W
 2740 Hub & lock 2888.50 Hub & lock
 3165 enter swamp - 3570 L.V. same
 3652. Hub & lock - 4560 Hub & lock
 we chain out the whole mile and
 set stake 5280 but it is so dark
 we quit for night

Set my bill at Boston
 Hotel \$2.30 and catch 7.00
 G. N. Lion to Bemidji.

Sunday Nov 23rd 1913 all day
 at Bemidji.

Harry S. Todd.

Nov 24-1913

(4)

(79)

Cross Lake Cemetery

See 9-145-31.

Monday Nov 24-1913.

Lo Bemidji at 6:30 A.M. Via
GNRR. At Cross Lake 7-05
A.M.

Curo comes from Walker on
4-30 early morning train from
Walker and goes to Cross Lake
from Bemidji with me.

both stop at Boston hotel

I and La Bell work in one
crew and Curo and Anderson
work in another - Curo uses
Gurley Compass and 100 ft.
"Monarch" steel tape La Bell
and Todd use H+H transit
300 ft tape

Todd + La Bell begin at big
iron 1/4 corner between Secs
9 + 10-145-31 previously
established by Curo and run
west thro Sec 9 - $\text{N } 8^{\circ} 25' \text{ E}$
@ 9 feet cross wire fence bears
N 2 @ 748. cross wire fence
- Harry S. Todd.

Nov 24-1913
could

⑤

Con Lake Sec 9
145-31

beats N & S @ 1200 net hub
@ 1685. enter swamp @ 2080 v.
@ 2245.45 Hub & lock
2640 net Hub "B N=1." Limp
Can to Sec 9-

@ 2740 Hub - 3580 Hub
5278.60 the true $\frac{1}{4}$ corner bet.
Secs 8 & 9- 145-31 previously
established from old US beaming
lines by Curo and duly
recorded by Curo sets
South 5.20 feet

This is all Todd & Le Bell
do today but

Curo and Anderson work
in another crew go to all of
the old Gout corners along
the South- and west and
North sides of Sec 9 where
they find them all then in
P.M.

Curo and Anderson go to $\frac{1}{4}$
corner between Secs 4 & 9
145-31 where US notes call
for a post and the following
John W Curo - Harry S. Todd.

Nov 24-1913
could

(6) (8)

145-31 Sec 9
can take care

being lines "H. V. 4")

JP 10 N 8° W 120 LKS

" 6 S 16° E 48 "

line.

We find the tall stump of the
N W line standing plainly
marked and the short stump
of the S E line cut off below
the figures and from these
stumps we set the line 1/4
corner by flat chain from face
of stump after which the stumps
check out for course @ 8° 15' E

We set a galvanized iron
pipe 1 1/2 x 48 inches - anchor rod
the bottom capped on top
and we mark the cap with
a punch marker "145" set 3
ft in the ground in a 1 ft
mound of sand

Going half a mile west
to the corner to Secs 4-5-8-9
145-31 we find the point of
the old corner previously
established and recorded
by Curio. We pull up the wood
Jahp W Curio

Nov 24 - 1913

Cous

⑦ Cross Lake Cmn

Stake and put in its place a galvanized iron pipe 4 ft long and 1 1/2 inches thru anchor rod thru bottom capped on top and marked with punch "4-5-8-9" set 3 1/2 ft in the ground in a six inch mound of sand. The stump of 3 of the old os bearing trees are still here and check for course and distance to head of stump SW tree gone.

The two new bearing trees marked and recorded by Cous have been cut but the stumps are here and stand correct for course and dist to head of stump.

We go half a mile south to the 1/4 corner between Secs 8 and 9 - 145-31 previously established and recorded by Cous, where we find the old rotted point of the old wood corner which we pull up and put in its place a

John W. Cous.

Nov 29-1913
cont'd

(8)

Corn Lake Co. (82)
145-31-Sec 9.

1 1/2 inch galvanized iron pipe 4 ft long
anchor rod this bottom, capped
on top marked "45" and set
nearly its full length in the
ground in a flat mound
of sand ✓

From this non 1/4 cor it is
33 feet west to a new wire fence
running west which is probably
on the old line line run by me

The stump of the old S/E BT
is still there and checks with
the iron corner

A fence begins 33 ft East
of this non 1/4 cor and runs
away off line S.E. Mrs Morgan
says they built it in line
with the fence west of the 1/4
cor Morgan owns SW NW sec 9.

I am staying at the Boston
Hotel with Harry Todd

We find 23 small 1 1/4 inch gal-
iron pipe - black caps at Mullins
Swanberg ordered these but they
are too small - we will have to
use them.

John W. Carr

(89)

(9)

Nov 1913 Cass Lake Cemetery
Working for Village of Cass Lake
Harry S. Todd's Exposed

(86) Nov 1913

Con Lake Cemetery

①

Expense acct - Curio

(12)

Cass Lake Cmn
9-145-31

(87)

Tuesday Nov 25th 1913

Todd & La Bell double centre the
N & S Cen line and the E & W Cen line
of sec 9 to make sure it is correct
and at 5275.70 N, the iron $\frac{1}{4}$
cor bet Secs 4 & 9 sets W 43.15 ft

Correcting

To set the centre of sec 9-145-31
@ Hub 2740 N we chain W 22.41 ft
and set hub & lock on line N & S
Cen line

@ 2640 N we chain west 21.59

Thence North along line Cen line
2.10 feet to an intersection with
the corrected E & W Cen line

At 2740 West we chain South
2.70 ft and set hub & lock on line
E & W Cen line of sec 9.

@ 2640 N we chain South 2.60
to line E & W line Thence West
along line Cen line 10.56 ft
to an intersection with the line
N & S line at which point
we set the true centre of
Section 9-145-31 being
John W Cmn

Nov 25-1913
contd

(88)

(13)

con lake
9-145-31

a galvanized iron monument
1 1/2 by 48 inch - anchor rod
thru bottom - capped on top
marked with punch "CEN OF SEC
9" set 3 ft into the ground
with mound of dirt 1 ft high
thrown to top of iron.

New BTS 103

Jack Pine

Jack Pine

WTS Wire fence is East

At a point on random
line 2642.10 ft N of 1/4 cor. the
cen of sec 9 bears West 21.62 ft

At a point on our random
line 2650.56 ft West of the 1/4 cor
the true iron cen post sets South
2.60 feet

Correcting South

@ 1320 N we chain 1.05 ft
to 1321.05 N, then West 10.81
where we set an iron monument
for the line center of the South half
of sec 9. being a galvanized iron
pipe 4 ft long by 1 1/2 inch thick
anchor rod thru bottom - capped
John W. Cunn

Vol 25-1913
contd

(89)

(14)

145-31-7
Can take care

on top-marked "116 3" set nearly
its full length in a flat mound of
dirt near the SW cor of cemetery
grounds.

Curo & Anderson go to
the cor to see 8-9-16-17-145-31
where we call out Christ Wrayge
to witness the iron drift bolt
set by Wrayge & Curo and
recorded by Curo for the
true sec cor.

We take up the drift bolt by
chopping out a 2 1/2 foot section
of a stick of "Corduroy" and
finding a double deck corduroy
beneath we force an iron monu-
ment down between two sticks
of corduroy for the true sec cor
being a galvanized iron pipe
4 ft long by 1 1/2 inches thick
capped on top marked "8-9-16-17"
set nearly its full length in
the ground 4 inch mound of dirt
to top set in cor of E & W graded
road for the true corner to see
8-9-16-17-T145 R31 from which
John W Curo

Nov 25-1913

Contd

(15)

Corr Lake Cam

9-145-31

(90)

the stump of the new bearing
tree established and recorded
by Curo stands correct for
course and distance to heart
of stump @ $8^{\circ}45'0$

a nail in the face of same
stump being 9" from stump and
bears $S65^{\circ}37'E$ 47.10 ft to
nail head in face of stump

Going half a mile East
we take up the small iron
 $\frac{1}{4}$ corner between Secs 9 & 16
145-31, set by Co Sur
Canfield - found correct &
recorded by Co Sur Curo
and put in its place a gal-
vanized iron pipe $1\frac{1}{2}"$ dia by
4 ft long anchored thru
bottom capped on top - marked
with punch "145" and set
 $3\frac{1}{2}$ feet into the road center
6 inch mound thrown to
top of iron for true $\frac{1}{4}$ at
19416-145-31 set by Curo
& Anderson, who then
Chain East along the
John W Curo

Nov 25-1913
cont'd

(16)

Cass Lake Cem
9-145-31

(91)

wood rough chain

@ 1328.70 about, intersection
1/16 (this should be 1328.45/16)

from this iron 1/16 we chain E.
at 197.15 about interest SW
Corrion of Van Pelt's Addition
should be (197.45) at about
1328.70 we dig and find the
iron sec cor to sec

9-10-15-16-145-31

by digging we find this
iron corner over a foot below
the street center and in chopp
ing down we accidentally
strike the cap and break it so
decide to put in a new iron

We use a plumb bob and
steel tape to preserve the point
of old iron and chain East
exactly 6 feet and drive a
nail in the frozen ground
then chain carefully South
6 feet and drive a nail
in the frozen ground then
with the assistance of Mr
we check the

Nov 25-1913
cont

(92)

(17)

Cor Lake Cemetery.
9-145-31

measurement several times to see that it is correct to the nails then dig up the old iron and put in its place a galvanized iron pipe 4 ft long by $1\frac{1}{2}$ inches this anchor rod the bottom capped on top and marked with a punch "9-10-15-16" and set its full length in the ground with cap just level with street center

Placing a flag at the iron corner to Sec 9-10 15-16 - and another flag at the iron $\frac{1}{4}$ cor between Sec 9-10-145-31 and work the transit on line between the points and Beg @ 9-10-15-16 and chain north

@ 499.60 Cen of main line

So. R.R. bears E & W

@ 515.50 Cen of side track

@ 548. Cen of house track

@ 1320 fm at

@ 2642.90 intersect the big iron $\frac{1}{4}$ corner bet Sec 9 & 10 ✓

John W. Cunn

Nov 25-1913
Contd

(18) Cass Lake Cem (93)
9-145-31

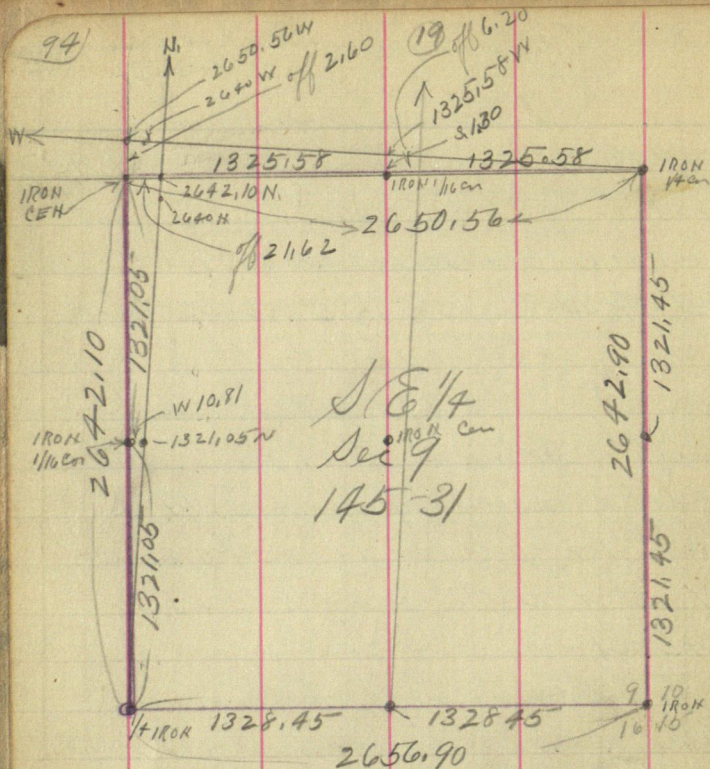
✓ Correcting back

at 1320 N we chain North 1.45
feet to 1321.45 N where we set
an iron $\frac{1}{16}$ corner being Galv iron
pipe 4 ft long by $1\frac{1}{2}$ inch thick
anchor rod thru bottom capped
on top set $3\frac{1}{2}$ feet in the ground
with $\frac{1}{2}$ ft mound of dirt thrown
to top of iron cap marked " $\frac{1}{16}$ S"
and set for the true $\frac{1}{16}$ corner
North of Cor to Sec 9-10-15-16
145-31

Todd & La Bell work alone and
Curo & Anderson work alone in
AM but all work together in PM.

Curo pays his bill \$1.25 at
Boston Hotel and goes to Endicott
for dinner Todd still at Boston Hotel
Curo telephones home in evening 20°

John W Curo



Wednesday Nov 26-1913

Correeding

Carr writes notes all A.M. at
Hallet Bendin - Harry S Todd
Anderson + La Bell Correct line
@ 1320 W of 1/4 on E side of
Sec 9-145-31 chain West 5.28
to 1325.28 W then South 1.30
where we set an iron monument
being galv pipe 4 ft long, anchor

Nov 26-1913
Cont'd

(20)

Cross Lake Can
9-145-31

(95)

rod thro bottom capped on top
marked " $\frac{1}{16}$ Sec" and set

put into the ground mound of
dirt 11' high thrown to top in
the true centre of East half of
Sec 9-145-31

To put in the centre of
the SE $\frac{1}{4}$ of Sec 9-145-31
we begin at the iron $\frac{1}{16}$ corner
west of the SE cor where Todd
places the transit: focus
telescope on a red flag placed
at the iron $\frac{1}{4}$ on SE side
of Sec 9, turn an angle to the
right $90^{\circ}39'$ and run North thro
cen of SE $\frac{1}{4}$ of Sec 9.

@ 1320 Hot lock rough chain

@ 2642.50 N, the iron $\frac{1}{16}$ in cen of
E. $\frac{1}{2}$ of Sec 9 sets East 6.20 ft

Correcting South at Hot 1320 N
we chain East 3.10 feet to true
N & S line where we set the
transit and focus telescope
 $\frac{1}{4}$ mile N and run a picket
line North to an intersection
with the true E & W cen line of

96) Nov 26-1913
Cold

(21)

9-145-31
Cross Lake Can

the S E $\frac{1}{4}$ of the Sec

Beg @ the iron $\frac{1}{16}$ cor
N of the S E cor of sec 9 we run
West and at 2653.73 (not
chained, the iron $\frac{1}{16}$ in cen of
S. half of sec 9. sets South
5112 feet

Correlating back

at a point where our E & W
random line crosses the true
N & S Cen line of the S E $\frac{1}{4}$
we chain South along the true
N & S line 2.56 feet where
we set the iron $\frac{1}{16}$ corner being
a galvanized iron pipe, 4 ft
long anchor rod thro bottom
capped on top and marked $\frac{1}{16}$
set 3 ft in the ground 1 ft
mound thrown to top and set
for the true center of the S E $\frac{1}{4}$
of sec 9. 145-31 Then run
a line of hubs 80 rods so
along the true line to the
iron $\frac{1}{16}$ in the E & W road.

Begins to snow hard & we
quit for night. Cues at Ender

Nov 26-1913
Contd

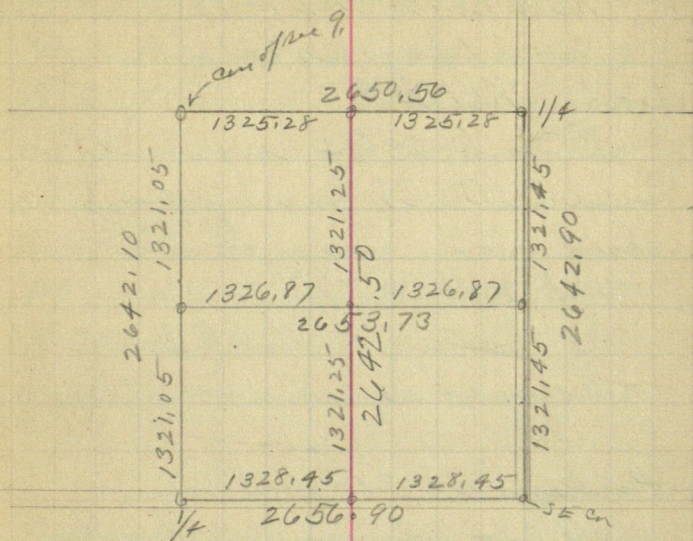
Contat

(22)

Cross Lake Cur.

9-145-31

97



Todd at Boston

W.S. Whitnack wants ⁷ mpls survey made

✓

(98) Thanksgiving (23)

Thursday Nov 27-1913

Todd pay his hotel bill at
Boston hotel &

Curo pays \$4 in full at
Eudion hotel and go home for
Thanksgiving Curo & Walker
Todd to Park Rapids

I loan Todd. \$2.50
all day at home

Friday Nov 28-1913

all day at home in Walker
Catch 6.15 P.M. A.V. train
to Cross Lake Buss 25 ¢
RR fare 44 ¢ Supper at home
Over night at Eudion
hotel Cross Lake.

Todd still at P.R.

John W Curo

(24)

Cass Lake Cem
9-145-31 (99)

Saturday Nov 29-1913

Begin at iron $1/16$ in cen of
 $S 1/2$ of Sec 9 Focus telescope
 on true iron $1/16$ cor in \checkmark Cor of
 $SE 1/4$ of Sec 9-145-31 and
 run East along true $1/16$ line
 40 rods (660.00 feet)

@ 300 set pin

@ 365 set iron monument in

SW Cor of land deeded to
 Church of St Charles for a
 Catholic Cemetery 2 acres
 iron mon being galvanized
 pipe 4 ft long $1 1/2$ in diam
 anchor rod thru bottom
 capped on top set 4 ft into
 the ground in a mound of
 sand 1 foot high.

@ 391.25 E set hub

Then 295 and
 @ 660 set iron monument
 in true SE cor of the 10
 acre cemetery grounds
 being 4 ft galvanized iron
 pipe $1 1/2$ thro anchor rod
 in bottom capped on
 top and set its full
 John W Curo

Nov 29-1913

cont'd

(25)

Cross Lake Cem

9-145-31

(100)

length 4 feet into the
ground in a 1 foot mound
With transit on iron
 $\frac{1}{16}$ in cen of south half of Sec
9-145-31 focus telescope
North on true iron centre
of Sec and run North on
true centre line

@ 300 set pin @ 360 set hot
stick @ 600 pin @ 660 set
iron mon for the true NW
Cor of Cross Lake 10 acre
Cemetery grounds at which
point we set a 4 foot galv
iron pipe anchored thro
bottom - capped on top and
set 4 feet into the ground
in a 1 foot mound of sand

To put in the NE cor of
the 10 acre cemetery grounds
we begin at the NW Cor and
chain East 660 feet to an
intersection with a line
660 feet chained north from
the iron S.E. Cor At the
NE Cor of the 10 acre cem
John W. Curo

Nov 29-1913
could

(26)

Corr Lake Cem
9-145-31 (101)

grounds we set a $7\frac{1}{2} \times 48$ inch
galvanized iron pipe anchor
rod thro bottom capped on
top and set its full length
into the ground in a 1 foot
mound of sand

With the transit on
the iron S E Cor of the 10 acre
cem gds focus telescope on
the NE Cor and run north
295 feet where we set a gal-
vanized iron pipe anchor rod
thro bottom and capped on
top and set its full length
into the ground in a mound
of sand $1\frac{1}{2}$ ft high this is
the NE Cor of the 2. acres
deeded to the Catholic
Church and at a point
295 feet west of the NE Cor
and 295 ft N of the SW Cor
we set an iron monument
for the NW Cor of the Catholic
cemetery gds being a
galvanized iron pipe 4 ft
long - anchor rod thro
bottom w cur

Nov 29-1913
102 could

(27) Cass Lake Cem
9-145-31

bottom capped on top and
set its full length into the
ground in a mound of
sand $1\frac{1}{2}$ ft high in the line
nw cor of Catholic Cemetery

With the transit at
the iron SW cor of of the 10
acre cemetery grounds - focus
telescope north on nw cor then
turn telescope on S E cor -
angle reads $89^{\circ}05'$ ✓

At the iron nw cor of
cem gds it is 7. ft N and
9.70 ft E to the outside of
the corner post of cem fence

At the iron S W Cor of
Cem gds it is 4. ft N and
1.50 E to a point intersecting
a line with the S + W fence
line of the cem fence where
the SW cor post should be

At iron S E Cor of Cem
gds it is 6.70 ft E. and
4.80 ft north to the outside
of the corner post at S E Cor
of Cemetery fence on S + E
John W. Curo

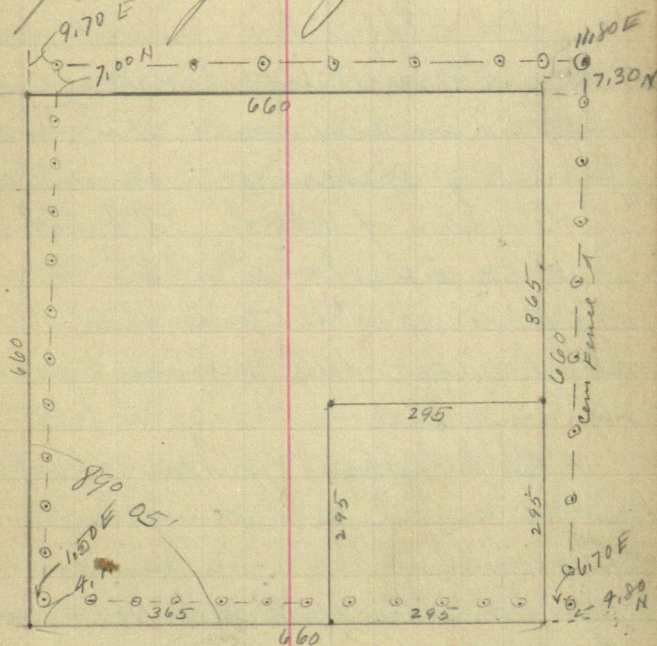
Nov 29-1913
Coud

(28)

Pass Lake Cem
9-145-31

(103)

Sid. of Catholic cemetery,
at the NE cor of Cem gds
it is 7.30 ft N and 11.80 ft
East to the outside of the NW
cor of Cem fence post



Curo - Labell - Anderson work
HOB transit - 300 ft Ch. Steel Tape
Set at Eudion Hall - Rained - mist
all day Telephone Todd PRaphels 30
Horn wall 20
Johnson gets 6 iron nails from Hank Mullen

John W Curo

Sunday Nov 30 - 1913

As it may freeze and we are anxious to put new stakes in the cemetery we decide to work today.

I telephone Mr. Hilbertson who offers to let the village of Cass Lake have some 2x2 pine cemetery stakes and as we have 2 blocks of ~~440~~ 104 lots each = 208 lots = 832 stakes figuring 16" to each stake we will need 1110 running feet of 2x2 pine.

I telephone Johnson's livery who send a day team to the mill with Mr. Hilbertson & Mr. LaBill and get 1110 running feet of 2x2.

They take it to Mr. who starts up his gasoline saw outfit and cut it into 16" stakes.

Then shovel it into a coal wagon and bring it to the cemetery John W. Curo

Nov 30-1913
Cont'd.

(30)

Cross Lake Cem
9-145-31 (105)

Mr Anderson sharpens stakes all day and finishes up the mounds around all iron monuments.

La Bell & I monkey all day trying to chain out and figure out how to plat and re-stake the cemetery & do so as to bring each lot where it originally was staked.

As each lot was originally staked 10×16 with 8 foot streets on all sides of each lot we decide to change the lots in groups of 4 lots with an 8 foot street around the outside and a narrow alley between - this would make the lots larger and would not change the plat.

and as several groves stick over into the streets which we can narrow up into alleys it will save moving the groves so they will then be on its own lot.

John W. Curo

Nov 30/1913

cont'd

(31)

Cass Lake Cem
9-145-31

(106)

so we decide to make the
alleys 3 feet wide and leave
the streets 8 ft wide this will
make the lots 12.50×18.50

Cass - LaBel - Anderson
work all day There was a
funeral at 3 P.M.

Still staying at Eudora
hotel

John W. Cass

(32)

Pass Lake Cem
Sec 9-145-31

(107)

Monday Dec 1-1913

As the old cemetery gets in
302 ft wide E & W and 304
ft long N & S with a 30 ft drive
way N & S in cen we chain
out and set the 4 corners
where we drive an iron gas pipe

With hand over iron
S & E Cor focus on S & W cor and
run west along line of old
lot stakes

1178.50 stakes

@ 12.50 stake 181.50 " Reg @

15.50 " 194.00 " NE Cor

28.00 " 202.00 " run W

36.00 " 214.50 " same

48.50 " 217.50 " line of

51.50 " 230.00 " stakes

64.00 " 238.00 " to iron

72.00 " 250.50 " NW Cor

84.50 " 253.50 "

87.50 " 266.00 "

100.00 " 274.00 "

108.00 " 286.50 "

120.50 " 289.50 "

123.50 " 302.00 IRON BAKEN

136.00 " IRON BK

166 " IRON BAKEN

John W. Cline

108 DEC 1-1913
could

33 9-145-31
Cass Lake Conn

Reg @ iron A/E cor focus on NE
cor and Chain north along line of old
stakes

@ \$18.50 set stake

21.50 "

40.00 "

48.00

66.50

69.50

88.00

96.00

114.50

117.50

136.00

144.00

162.50

165.50

184.00

192.00

210.50

213.50

232.00

240.00

258.50

261.50

280.00

@ 288.00 Stake

@ 304.00 iron NE cor

Reg @ SW cor and
run same line of
stakes to NW cor
set in iron

Dec 1-1913
could

(34)

Corral Lake Cem
9-145-31

(109)

we run the outside boundaries
of the platted portion and set
2x2x16 inch pine stakes at
all lot corners

Then set a line of stakes N.
along each side of the 30
foot Centre drive way

We set transit on SW
Cor of Lot 8 Bk 2. Focus
liloscope on SE cor of Lot 1
Bk 1 and a line of stakes ^E or
given on page 32. ✓

Then run the N line and so line
of ^{lots} 9 to 16 of both blocks

Then stake the N line and
south line of lots 9 to 16
across both blocks

Then run the North line of
lots 17 to 24 of both blocks
and drive 2x2x16" wood
stakes at all lot corners

Chain west from SW cor
of Bk 2 @ 29.20 intersect 16 line
Chain South 33.60 to 1/16 line

At NW cor of Bk 2 it is
26.80 ft west to 1/16 line

Dec 1-1913
contd

(35)

Corn Lake Cem.
9-145-31,

(110)

and at S.E. Cor of Bk 1. it is
30.95 ft South to 116 line and
34.10 ft East to West boundary
of Catholic Cemetery grounds.
At NW Cor of Catholic
Cem gds it is 36.05 ft West
to East side of Bk 1.

With transit on S.E. Cor
of Bk 1. focus on SW Cor of
Bk 2. Turn to Right $89^{\circ}56'$
30" to NE Cor of Bk 1.

Curs - La Bell - Anderson
work like the devil all day but
it will take another day to finish
it as there is still left
20 rows of stakes to be set
E & W and as it takes about
30 minutes to each row of
30 stakes it will take it will
take 10 hours to finish.

Telephoned Todd who will
arrive from Park Rapids to-
night to finish the Cemetery
Slid at Condon Hotel

Whitnack & Housons leave meet train and
take out blankets. Todd over night at Corn
Cem hotel.

Jas W Curs

(36)

Cass Lake Camp

9-145-31

(111)

Tuesday Dec 2nd 1913

Curo pays Eudion Hotel \$
for board. Giver Todd \$
and goes home to Walker RR fare 46¢

Todd - La Bell + Anderson
finish making Cass Lake Cemetery
Todd gets B.S.S.L. at Cass Co Hotel

Curo comes back from Walker
in P.M. and stays overnight with
Todd at "Cass Co Hotel" Cass
Lake.

This finishes the survey
of the Cass Lake Cemetery and

Curo + Todd will start work
tomorrow for the owners of sec
6-145-31 being W.S. Whitcomb &c.

John W. Curo
Harry S. Todd

(112)

①

Wed Dec 3-1913

13
14
16
17
19
20

28
29

31
32
33
34
35
36

37
38

145 } 31 (113)
① 146 }

Cass Lake

Monday Oct 5-1914

Survey of Judicial road between
Cass & Beltrami Counties Minn

Survey ordered by O. W. Stanton.

Judge of 15th Judicial District Stated

April 27 - 1914

The following special commiss-
ioners were appointed

M. N. Kolk

Cass County

Chris Burns

C. H. Allander. Beltrami Co.

Description of road

Begin @ Co line bet Cass & Beltrami @ NW Cor

Sec 4-145-31 Thence West to SW

Cor Sec 32-146-31 Thence North on

West line of 32 & 29-146-31 about 1 1/2

miles to a point 33 ft S of Meander

line of Long Lake Thence E astaly,

Northerly and Southerly parallel to

said meander line to a point in

Lot 4- Sec 29-146-31 to pt opposite

site selected for a bridge Thence

North to said bridge site

John M. Curo was appointed to make
Survey on Oct 7-1914 but on

145 } 31
146 }

(114)

② Cross Lake
Judicial road

account for being able to go
employe

the work

Henry S

Darwin

Lo Ah

ticket 2

At Wal

Russfa

Supper

at Cho

Tues

All

field

Lo H

Buss

Lo W

R.R. fare

= 88

P.M.

Call

and h

~~Francis B.~~

Francis B. Davis

1078.18

230.00

828.18

2

10.00

165.62

10.00

175.62 fees on sale

1.30 post notes

3.78 levy copy

40.40 - Printer fees

221.30

1078.18 Principal

43.94 inst.

1343.42

145 } 31 (114) ③ Conn Lake
146 } Judicial wood
account of not being able to go
employed Harry S Todd to do
the work.

Harry S Todd Trainman
Darwin Smith Chairman

Lo Aheluy at 5.50 P.M. via G.N.Ry
ticket $20^{\circ} + 20^{\circ} = 40^{\circ}$

Ar Walker 6.14

Pass fare at Walker on survey rig 25°
Supper at restaurant Over night
at Chase Hotel

Tuesday Oct 6-1914

All day in Walker copying
field notes

Lo Hotel for G.N. depot @ 5.30
Buss 25°

Lo Walker @ 6.14 P.M. via G.N.Ry
R.R. fare to Conn Lake $44^{\circ} + 44^{\circ}$
 $= 88^{\circ}$ Ar Conn Lake 7.05
P.M.

Call on M.N. Kell at Times Bldg
and he takes us to hotel.

③ 145 31
146

(115)

Cass Lake Judicial road.
Wednesday Oct 7 1914.

We go to N.E. corner

sec. 5-

to call
ramparts

31 6.4' 71

858
- 578

61.21

271
26.1

586

0381

W

681

2.5' 31

0 21
120

181

30

8

193

51' 31

51
- 4

101

71

38

plainly
E + SW.

take
that

measuring

d
so. Run

119
112
229

as.
ub @
fence bis.
bout 1800
camp @
oast hub
hubine
ed true

145-32.

as. North 26.21

SW. 7. P. standing plainly marked.

③ 145 31
146

115

Cass Lake Judicial road.

Wednesday Oct 7 1914.

We go to N.E. corner of sec. 5-
145-³¹-32 where U.S. notes call
for stake & following Beaumonts

we find the NW & SE trees plainly
marked and no trace of NE & SW
trees. We also find a stake
& tack set for corner that
checks out perfect for measurement.
We use this corner as if
think it was set by Curo. Run
West Mag. Var. 7°.

@ 20 cross wire fence. @

493 across wagon road brs.

NE & SW. @ 426.20 set Hub @

1006.60 Hub @ 1046 cross wire fence brs.

N. & S. @ 1092 enter swamp @ about 1800

leave swamp. @ 1910 center swamp @

about 1980 leave swamp @ 2100 set hub

@ 2215.6 set hub @ 2640 set hub in

center of road @ 2623.80 we find true

1/4 corner on N side of Sec. 5-145-32.

brs. North 26.20. We find the

SW. & S. standing plainly marked.

Continued
(116)

(4) Judicial Highway
Beltrami Co. Minn.
Oct. 7 - 1914

and the stump of the N.E. corner
We set the corner by flat
measurement from face of Bts
after which ~~the~~ put in the
following new Bts. Var 9°.

Jan. 8 755°37' W. 93.00 ft.

J.P. 12 310°50' E 139.60 ft.

Then Beg. @ 14 just set run
West. Mag. Var. 9°.

@ 535.70 Hub. @ 1550 set Hub.

@ 1685 enter slough @ 1770 leave
slough @ 1873 enter slough

@ 1950 leave slough @ 2281.8 set
hub. @ 2631.30 true N.W.

corner of sec. 5 - lgs. South 17.00
ft. Then beginning

@ N.W. corner of sec 5 (set
in iron) run North Mag.
Var. 8°50' @ 181 Set Hub.

@ 582 Set Hub. @ 774 enter swamp

@ 962.5 set Hub in Stump. @ 1808.65
set Hub in large Stump @ about
2135 leave swamp quit for night

Darwin Smith. NW 1/4,

C.H. Allender. Manfred Peterson. John Fairbanks
George Fairbanks, Wm. F. Fairbanks

(0104)

3) Judicial Highway
Beltrami + Co

Oct. 8 - 1914 117

Continue Transit Line North
between secs. 31-32 - T146 - R32
@ 2617.25 true $\frac{1}{4}$ corner between
secs. 31-32 brs. East 27.20 ft.
We find the stumps of both.
Bts. plainly. Marked from
which we set the corner.
from flat measurement from
face of B.Ts. we set a
4x4x48 inch oak for
corner. Then beg @ a
point 27.20 ft west of corner
just set continue transit
line straight north @
2700 set Hub. @ 2950 enter
swp. brs. E + W @ 3105
W. same brs E + W @ 3256
cross fence Brs. about E + W @
3400 set Hub @ 3866 enter slough
@ 3980 leave slough @ 4370 set Hub
@ 5245.30 true cor to secs.
29-30-31-32 - 146-32 brs.
E 44.5 ft. We find the N.E., S.W.,
and S.E. trees plainly marked
which check out good for

146-32
continued

⑥ Judicial Highway
Bethlehem 7 Cars
Oct 8 - 1914

(118)

Course + Measurement. We
drive in a 4x4x48 inch
oak stake for corner. We
then check a hub over
on true line, and run
North by backsighting
on corrected line. @

154.70 set Hub. @ 1065 cross
road @ 1112.50 Hub. @ 1571.2

Hubs. Quit for night.
Darius Smith. W. H. Holl
Channing. C. H. Allander,
Manford Peterson John Fairbanks
Wm. Fairbanks get in
full day. George Fairbanks
gets one half day

146-32

(7) Judicial Highway
Belthamit Cas

Oct 9 - 1914. (119)

Continue transit line north
from Hub 1571.20. @ 1875-
Cross road @ 1915 Hub

Then beg. @ Hub 1915 run
as follows Mag Var $8^{\circ}45'$

Sta Course Distance Sta

1.	N $55^{\circ}25'E$	308.70 ft	2
2	N $2^{\circ}5'E$	498.70 ft.	3
3	N $50^{\circ}15'E$	730.00 ft.	4
4	N $54^{\circ}52'E$	226.80 ft.	5
5	N $62^{\circ}35'E$	321.00 ft	6

Station No 6 being a point on
West bank of Mississippi river
where the bridge is to be
built. about one foot from water
edge

Survey of Judicial Road Cass and Beltrami Co

Oct 1914

6 7 8 9 10 11

Harry S Todd

Milage

1 1 1 1 1 0

Darwin Smith ch

Milage

22 8 10 10 22 0

1 1 1 1 1

M N Koll Corn

Milage

0 1 1 1 0

CH Allander Corn

Milage

0 8 10 10 0

0 1 1 1 0

Wm T Faubanks ax

Milage

Lives near Morrison

0 1 1 1 0

Manford Peterson ch

Milage

0 1 1 1 0

John Faubanks a ant

Milage

0 1 1 1 0

Asa Faubanks a ant

Milage

1 1/2 0 0

Chris Evans Corn

0 0 0 0 0

0104

(121)

Correcting back

On Mile between secs. 31-
32. North $\frac{1}{2}$ mile

Hub.	4370	gals	E	38.73	#
"	3400	"	E	32.03	"
"	2700	"	E	27.74	"

0066 + 27.20 South $\frac{1}{2}$ mile

Hub	1808.65	"	E	18.80	"
"	962.50	"	E	10.01	"
"	582	-	"	6.05	"
"	181	-	"	1.85	"

On E+W line on N side
of sec. 5. 145-32
West $\frac{1}{2}$ mile (0065)

Hub	555.70	gals	S.	3.61
"	1550			10.10
	2281.80			14.82

East $\frac{1}{2}$ mile (01)

Hub.	626.20	gals	W	6.26
	1006.60	-		10.07
	1500			15.00
	1800			18.00
	2100			21.05

Cass Lake

Judicial Road Cass & Beltrami
CossNote: - partial estimated
cost of building as figured out by
Darr Smith - Harry Stadel & M. H. Kell
as follows: -

Mile on N. side 5-145-31 vis	
1480 yds fill across swamp @	\$ 440.
^{30%} = \$ 440.00	
4 Acres grubbing @ \$60.00	240
1 Mi. limping 6 days @ \$20	120.
460 yds ditch @ 25*	125
Clearing R of W	100
	<u>\$ 1025</u>

Mile Bet 31 & 32 - 146-31

1362 yds fill ac swp @ 30*	\$ 408.60
1362 " " " " @ 50*	\$ 681.00
908 yds ditch @ 25*	227.00
102 " " @ 25*	25.50
305 " fill @ 25*	76.25
1 Mi. Tompiking 6 days @ \$20.	120.00
Clearing and grubbing	225.00
	<u>\$ 1763.35</u>

3/4 mile balance

500.00

.00658

(124)

D

25-26-139-30

Bochus-Miller

Bochus Oct 16-1914 Bochus
139-30 Working for A O Miller

Curo copies notes in Ct Hs at
Walker and takes night train to Bochus
Roy Bryant takes night train from
Jenkins to Bochus Both get
lodging in same room at Fairview
Hotel Bochus

Saturday Oct 17-1914

Curo and Bryant get breakfast at
Fairview (Jack Hayes Prop)

A O Miller and his auto
take Curo + Bryant to Sec 25-26
139-30 where they are to survey
the following land

NE $\frac{1}{4}$ of SW $\frac{1}{4}$ and Lots 1 and 2 - Sec 25
also Lot 7 of Sec 26 - 139-30

Otis Larreau. meets us and
helps us get started work two
hours + quits

Setting transit over $\frac{1}{4}$ Corbet
25 and 26 start a line of stakes
West @ 8°30' on

Curo + Bryant get dinner
with Mrs Alace B. Larreau

Oct 17 1914
Cont'd

(2)

25-26-

139.30

Miller-Bachus

(125)

P.M.

Reg @ mon 1/4 Cor bet 25 + 26 - 139-
30 previously established from alal
us B.T.S. by Curr^{and} M.A. Kemp we
run East \vee 8°30 Curr + B Ch.

@ 118.50 hut in field @ 300-600 stake

@ 614.90 hut in field @ 767. SW Cor
of log house bears north about 6'

to field House is residence of Mrs
Laneau. @ 900 stake

@ foliage enter creek runs SW

@ to creek.

Board + Lodging: U.S.

Oct 16-1914 Euro Lodging with Hayes

" 16 " Bryant Lodging with Hayes

Oct 17 Euro + Bryant Breakfast with J Hayes

" " Euro + Bryant Dinner + Supper with
Mrs. Larreau

Bryant Lodging with Frank Gleason

Euro " " Jack Hayes?

Oct 18 Bryant Breakfast with
Mrs. Larreau

" " Bryant Dinner with Mrs. Larreau

" " Issajeff ^{supper} dinner " " "

" " Schwalbach " " "

Bryant Lodging with Frank Gleason

Oct 19 Bryant Breakfast with Mrs. Larreau

" " " Dinner " " "

" " " Supper " " "

Bryant Lodging with Frank Gleason.

Oct 20 Bryant Breakfast with Mrs. Larreau

" " " Dinner " " "

" " Gleason " " "

Oct 21 Bryant Supper " " "

Bryant Lodging with Frank Gleason

Oct 21 Bryant Breakfast, Dinner &
supper with Mrs. Larreau. Continued

Working for H.O. Miller, Bochem 189-30 Oct 1914

Note: A man on the miller got 82. in day as he pays cash and Tupperware is \$2.25 in day in account of 10% discount on warrants euro

	16	17	18	19	20	21	22	23	24	25	26	
Mrs Horton	euro	0	0	0	0	0	0	0	0	0	0	
John H. Curo	Buy	0	0	0	0	0	0	0	0	0	0	€45
Expenses	4 ²	0	0	0	0	0	0	0	0	0	0	10.00
Roy Bryant	0	1	1	1	1	1	0	1/2	0	0	0	85
Carfare	33 ⁰	0	0	0	0	0	0	0	0	0	14	24.00
H.O. Miller	0	0	0	0	0	0	0	0	0	0	0	00
Olis Larreau	0	1/4	0	0	0	0	0	0	0	0	0	00
Train	0	0	0	0	0	0	0	0	0	0	0	50
Teddie Essajiff	0	0	1	1	0	1	0	0	0	0	0	1.50
S. Schwaibach	0	0	1	1	0	1	0	0	0	0	0	6.00
Frank Gleason	0	0	0	0	1	0	0	0	0	0	0	6.00
"	Lodging	0	0	0	0	0	0	0	0	0	0	2.00
Jack Hayes	Meals	14	14	14	14	14	14	14	14	14	14	1.25
Mrs Larreau	Food	0	11	11	11	11	11	11	11	11	11	1.35
												85
												50
												3.50
												\$ 58.30

Note: S. Schwaibach gets 1.25 with Mrs Larreau They pay this 1.35 - 82.20 = 50.80

128

5

139-30

0.
1.
13.
14.
16.
17.
19.
20.

28.
29.
31.
32.
34.
35.
37.
38.
40.
41.
43.
44.

56.
58.

Working for Powers Twp

139-30

Oct 1914

Note: Powers Twp
pays team and
a man \$2.25
on account of
100% discount on
Twp warrants
Twp millen got is
\$2.00 per day each
curo

(6)

139-30

129

John H Curo

Ray Bryant

J H Horton

Team

John Falk

Chas Rydberg

Team

J H

Lutren

Mrs Laveau Board Bryant

Mrs Horton Board

Frank Gleason Lodging Bryant

Loren Shepherd

	16	17	18	19	20	21	22	23	24	25	26
John H Curo	0	0	0	0	1	1	1	1	1	1	0
Ray Bryant	0	0	0	0	0	0	1	1/2	1	1	0
J H Horton	0	0	0	0	1	1	1	0	0	1	0
Team	0	0	0	0	1	1	1	0	0	1	0
John Falk	0	0	0	0	1	1	1	1	1	1	0
Chas Rydberg	0	0	0	0	0	1	1	1	1	1	0
Team	0	0	0	0	0	0	0	1	1	0	0
J H	0	0	0	0	0	1	1	1	1	0	0
Lutren	0	0	0	0	0	0	0	1	0	0	0
Mrs Laveau Board Bryant	0	0	0	0	0	0	1	1	0	0	0
Mrs Horton Board	0	0	0	0	0	0	1	1	1	1	1
Frank Gleason Lodging Bryant	0	0	0	0	0	0	1	1	1	1	1
Loren Shepherd	0	0	0	0	0	0	1	1	1	1	0

Reg @ apt 226.90 ft E of iron 1/4
on bet 24 & 25-139-30 chain to thro
com of 25 on transit line 6°30' S

00. stake @ 460.60 find hub Ht sta 8, 9,
10 and 11- Portage Creek lays West 70 ft.

Ht. 1170 Hub 1718.20 Hub 1960 Hub

2050.50 hub 2600 about cross E & W

transit line @ 2640 stake in marsh

3167.40 Hub- 3714. Hub Ht 3800 end of

big swamp 5283 intersect iron 1/4

on bet Sec 25 and 36-139-30

rough chain.

(043) Correcting back North: (04285)

5283 S = 00 N goes W O.

3714.00 S = 1569.00 N " W 67.47

3167.40 S = 2115.60 N " W 90.97

2640.00 S = 2643.00 N " W 113.65

2050.50 S = 3232.50 N " W 139.00

1960.00 S = 3323.00 N " W

1718.20 S = 3564.80 N " W

1170.00 S = 4113.00 N " W

460.60 S = 4822.40 N " W

00. S = 5283 N goes W 226.90

Sec 24 N
1/4 226.9
6°30' S

Sec 25

6°30' S
5283 - 6030 V
Rough Chain

5283 S

Beg @ iron $\frac{1}{4}$ on bet 25-26-139-30 chain
 East on transit line @ 00. iron $\frac{1}{4}$ @ 118.50
 Hub @ 614.90 Hub @ 1193 Hub @ 1722. Hub @ 2008.15
 Hub @ 2364.60 Hub @ 2588 Hub @ 2778 about
 cross vrs transit line At 2946.10 Hub
 @ 3162.40 Hub @ 3812.60 Hub @ 4467.50 Hub
 Thence 85 ft So (90° angle) Thence East
 (90° angle) at 5298 the iron $\frac{1}{4}$ on
 sets North 50.50 ft ^{1 E $\frac{1}{2}$ foot} and a hub set in
 line sets 85 ft North so that at
 5298.5 E the iron $\frac{1}{4}$ on E side of 25-
 139-30 sets South 34.50

(065) Connecting back West (06511)

5298.50 S 34.50

5298 goes S 34.50

4467.50 " S 29.04 v

3980.95 S 25.97

3812.60 " S 24.79 v

Wood $\frac{1}{16}$

3163.40 " S 20.50 - 20.50

2946.10 " S 19.15 v

2663.40 S 17.31

IRON PEN

2588 " S 16.82 v

2364.60 " S 15.36 v

2008.50 " S 13.05 v

1722 S 11.19

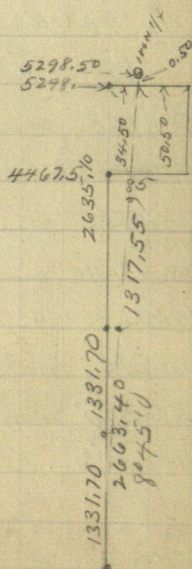
1331.70 S 8.66

IRON $\frac{1}{16}$

1193 S 7.75 v

614.90 " S 4.00 v

118.50 S 0.77 v



(132)

⑨ 139-30

Beg @ iron $\frac{1}{4}$ c on bet 25 and 26 - 139-30
 run W. $8'45'$ Ht 2, 4, 7, slake @ 740, 20 Ht.
 1000 slake, 1075 mark, 1200 slake, 1220 L^o marsh
 1268, 40 Ht. 1300 slake 1347 road beam
 NE & SW ends clown field @ 1600 slake
 top of hill ends cornfield @ 1643, 80 Ht
 2000 slake in road beam NW & SE
 @ 2057, 35 Ht @ 2480 L^o corn field
 2500 slake at 2581, 35 Ht @ 2600 slake
 2900 slake 2962, Ht 3447, 40 Ht
 3500 slake 4012 Ht 4445, 63 Ht
 4460 ends marsh NW & SE @ 5175, 00
 5300 slake 5361, 80 Ht.

Ht 5339, 60 L^o iron $\frac{1}{4}$ c on bet
 N. 90° angle $18'45'$ - 52, 80 Ht.

(99) Concluding back East (0098883)

✓ 5339, 60 goes N 52, 80

✓ 4004, 70 " N 39, 60

1/16

✓ 4445, 63 " N. 44, 01

✓ 4012 " N 39, 71

✓ 3447, 40 " N 34, 12

2962, " N 29, 32

2669, 80 " N 26, 40

Cen of m 26

2581, 35 " N 25, 55

2057, 35 " N 20, 36

1643, 80 " 16, 28

1334, 9 " N 13, 20

1/16

1268, 40 " N 12, 55

740, 20 " N 7, 33

970 " N 9, 60

(10)

133

Beginning @ 900 in run east.

@ 8°30' Bryant + Desjiff Ch.

@ 6°90' hub @ 1200 ft stake @

28°50' hub 1600 stake @ 22°60'

hub @ 1700 ft stake @ 15°85' hub

2000 ft stake @ 6°20'50'

hub 2400 ft stake 65°90' hub

@ 2800 ft stake @ 25°30' hub

@ 3000 ft stake @ 45°85' hub set. @

3600 ft stake @ 6°85' hub. @

3700 stake came to water's edge
and quit. impossible to chain.

{ Continued }

Oct 20 - 14.

Beginning 45°W $\frac{1}{4}$ " corner Sec 25
set up over 4 corner and run

813 North Trans. Glendon
Flag man By Bryant Transit
man set stake it but
did not chain it on account
of water.

Continued

~~@1055 Chas road @ 1112.5 set Hub~~

~~@1571.7 set Hub @ 1975~~

~~@1976~~ 76

61-16

16-45

50-31

2076 94
1990
26 94

0
0.5
1.0
1.5
13.0
14.5
16.0
17.5
19.0
20.5
0

28.0
29.5
1.0
2.5
1.0
35.5
37.0
38.5
40.0
41.5
43.0
44.5
0

56.5
58.0
59.5
0

X.00883 + 133.40

cash

493 leaf

62.20 Herb

X006.60 Herb

202.5

272

25

172

5.280

5.24 + 242

152

226.80

217

154.70

Smoke away.

leaf

.0066

133-30

33 N. Range No 30 Ry. 5th Mer.



PUBLISHED BY JEWETT & SON, 365 OAKLAND AVE. ST. PAUL

133-30

1057 1057
3304 4306
6306

Subdivision
Sec. 21 137-27
@ Cross Lake

649

Crow Wing
County

Dec. 27-1921 Tuesday

of Bearings or Corner.

Ran North to Cross Lake
do not hit Pine River so
now I am too far West
to go back and get transit
go to North East Cor of Sec 21-
137-27 start Random Line
South cut line untill fork
will get Sync the in mor-
ning and cut under
brush and chain.

J. P. Babcock
Asst. Co. Surveyor

Dec. 28, 1921

Harold Curo + I start and chain
South @ 300 Ft. Steel tape.

300, 467.7 Hub & tack 600, 766.4
Hub & Tack. then cut line until
Noon broke 8th. bar provisionally
broke & welded together.

P. M.

Louise Murchie Helps, she is a
Sister in Law of Butterfield. Cuts
brush while Harold & I chain

900, -1200, -1500, -1800, -1976.9
Hub & Tack, 2334 Enter Lake

2400 on Ice, 2700, 3000, 3300
3600, 3800 Leave Lake, 3900

3947.0 Hub + Tack 4200 at foot of small Ridge.

J. P. Babcock
Asst. Co. Surveyor

Lakeshore @ dam

113

T @ Hub 328.6 N 7 1/2° or W side

water edge S 45° 77' E 50 ft E 80.

N 75° E 200 about

Then across dam

N 69° 20' E 541 in archway of dam

N 65° 30' E 521

N 60° E

N 52° 30' E 6.16

N 45° E 7.58

N 36° 40' E 8.61

N 29° 53' E 9.10 slab on N 1/2

N 23° 23' E 9.17

N 21° 40' E 8.6 slope to water 9.20

18. full 1529 wood 1910-15.

every 20 years

N 22° E Herald Island 1110

N 20° 05' E 11.10 11.80 water line 25' E

N 19° 20' E 11.80 = water line 25' E at 11.90

N 16° 35' E 11.40 10.80

N 8° 10' E 10.10 10.47

N 5° 40' E 10.47 10.88

N 4° 10' E 10.88 10.50

North 10.00

" 9.77

But 9.10 and 9.20 cannot bulge out into lake 2. feet.

Shore line @ NW Cor T @ Hub in random

~~424950~~ 4960 = 4959.20 in chain

6 ft from bank shore line bears N

19° 20' E 500 ft

T @ same hub and at N side of point

on W side line runs S 34° 45' W 4.9

S 33° 15' W 4.20 in bank

S 33° 15' W 3.57 " "

S " " 1.5

S " " 50. " "

114

Beg @ S $\frac{1}{16}$ W side 21-177-27

poor South of slip 172-180

ft to small bay of water 150 ft wide
excludes S E 150 ft all low land

π @ Hub in $\frac{1}{4}$ dyke 23.950 ft
of $\frac{1}{16}$ run using line in

2 + 5 run S 50° 53' E

480 E end of dyke

241 & road in curve

257 557 Hub

π @ 557 road runs S 23° W 80 rods to
pt near curve

Road west 15 ft Road N 4° W 100

Tel poles W side of road bear
N 14° W 80 rods about

At SW Cor rec 21 The road
is 150 South and 33 ft East

Beg @ SW Cor 21 Poor N 85

poor to water 255

excludes E N 50 ft then N 100 ft

and stop scallops along 1000 ft

about 50 ft E of line to small pond
all low land

Beg @ $\frac{1}{4}$ chain E on road

145 E road 300 slats

492.7 Hub slats + 4.05 slats

occur river = 897.7

From Hub 492.7 + 30.3 =

523.0

532.0. only from River