

Sec. 28 11 T. 140. R. 29.

66.

MINING
TRANSET BOOK

363

$$\begin{array}{r} 5514.7 \\ 35 \\ \hline 45479.7 \\ \hline 1316 \end{array}$$

$$\begin{array}{r} 5518.30 \\ 35 \\ \hline 5483.3 \end{array}$$

$$\begin{array}{r} 2400 \\ 2155 \\ \hline 245 \end{array}$$

$$\begin{array}{r} 300 \\ 115 \\ \hline 185 \\ 1970 \\ \hline 2155 \end{array}$$

$\begin{array}{r} 157 \\ \times 400 \\ \hline 628 \\ 628 \\ 628 \\ 628 \\ \hline 62800 \end{array}$

$$\begin{array}{r} 300 \\ 245 \\ \hline 55 \end{array}$$

22
—
2200

Index

page to page

Donner in 135-29 on roads. 7 to 19.

Donner + Miller in Secs 24 11-140-29. 19 " 115.

Horst on Tw road in 135-29. Page 116 to ~~147~~
150

72

135-29

Working for Home Brook. Trip
April 27, 1915

Leave Hackensack
on 1.19 train for Pequot.
R. R. fare .55

Breakfast at Tanager
Hotel. Call up Melvill
and he says he will
send a train in to
take me out to Mrs.
Carson's where I am to
board while working
for Home Brook.

Dinner @ Tanager Hotel
Tuttle (town treasurer)
takes me and my
outfit out to Mrs. Carson
Hotel Bill @ Pequot 1.35
Supper with Mrs. Carson.

F. A. Lamer.

2
135-29

2 windy.

April 28, 1915 Working for Home Bldg.
A.M.

I call up Mr. Anderson and he says he will be over and we would walk over and view the road together which we did.

Herbert Anderson takes us across through fares with launch.

We meet Mr. Knutson (Surveyor of Crow Wing Co.) and he shows us the route the road will take when it does not follow the old grade on account of some lots he has plotted along the lake shore. We agree to follow that route altho it does not follow the old grade.

Dinner with Mrs. Carson.
P.M.

John Carson, Herbert Anderson and I walk to F. A. Lanner.

272

135-28 windy
 April 28, 1915 Continued
 P.M.

the $\frac{1}{4}$ corner on West
 side of Sec. 17-135-29, ^{at 17-28} where
 U.S. notes call for viz.

Oak 15 N 66 W 16 =

Birch 6 N 85 E 50 =

We find the N.W oak stump
 still there from which I
 set a 3" x 3" x 24" Aspen Hub
 with tack full length in
 ground for the true $\frac{1}{4}$ Corner.

From true $\frac{1}{4}$ corner just
 set by me I run S 89 $\frac{1}{2}$ ° E
 var 9° @ 4 + 2.10. set Hub

@ 6 + 61.20 set Hub.

Quit for night.

Over night with Carsons.

April 29, 1915 Cont. for Home Brook.
 A.M.

We continue East

@ 18 + 76.70 set Hub

@ 23 + 67.10 " "

@ 24 enter bog

F.A. Hanner.

(4)

135-29

272

Windy.

April 29, 1915 Continued.

@ 26 + 50 leave bog

@ 26 + 62.70 set Hub

@ 28 + 42.4

Dinner with Carsons.

P.M.

We continue East

@ 34 + 11.7 set Hub.

@ 34 + 58.7

@ 35 + 93.3

@ 38 + 75.3

@ 39 + 70 enter marsh

@ 43

leave

@ 43 + 94.1 set Hub.

Over night with Carsons.

April 30, 1915 Con't for Home Brook.

A.M.

@ 45 + 15 enter lake

@ 47 + 75 leave

@ 48 + 81.7 set Hub

@ 50 + 10 enter meadow

@ 52 + 30 leave

@ 53 set Hub.

We look for the $\frac{1}{4}$ Sec.

F.A. Lanner.

272

(5)

135-29.

April 30, 1915 Continued

A.M.

Corner bit. Secs. 16-17-
135-29 where U. S. notes
call for vig.

N.P. 24 S 66° E 12

B.K. Oak 8554 W 17

We are unable to find
any of these old B.T.S.
so we row up the lake
and look for the Sec.

Corner of Secs. 8-9-16-17-
135-29 where U. S. notes
call for vig.

N.P. 24 N 29° 30' E 197 =

N.P. 20 S 14° E 180 =

I find both the old stumps
standing and the S.E. B.T.
plainly marked from
which I set a 3" X 3" X 48"
oak post 24" in ground for
the true Sec. corner with
new B.T.S. vig.

N.P. 6 N 48° 8' E 32.5 ft. } with
N.P. 7 S 32° 34' E 19.00 ft. } Tacks
var. 9°

F. A. Hamer.

②

135-29

272

windy.

April 30, 1915 Continued

Linner with Mrs. Carson.

P.M.

I run South from true Sec. corner var 90

@ 6 + 24.9 set Hub.

@ 8 + 18.6 " "

Over night with Carson.

May 1, 1915 Continue for Hene Brook.

A.M.

We continue South.

@ 12 + 28.1 set Hub

@ 13 + 36 " "

@ 14 + 80 enter lake

@ 17 + 65 leave lake

@ 18 + 18.2 set Hub.

Linner with Mrs. Carson.

P.M.

We continue South.

@ 19 enter swamp

@ 20 + 70 leave " "

@ 22 + 25.8 set Hub

@ 25 + 3.6 " "

F.A. Lanner.

X

272

(5)

135-29 windy

May 1, 1915 Continued
P.M.

@ 29 + 45.3 set Hub.

Over night with Carson.

May 2, 1915 Cont. for Home Brook
A.M.

We continue South

@ 34 + 24 set Hub

@ 38 + 7.9 " "

Dinner with Mrs. Carson.
P.M.

We continue South.

@ 40 + 21.4 set Hub

@ 42 + 44.2 " "

@ 45 enter marsh

@ 51 + 5 leave " "

@ 52 + 64.7 set Hub.

Over night with Carson.

May 3, 1915 Continue for Home Brook
A.M.

We look for sec. corner
of secs. 16-17-20-21-135-29
where U.S. notes call for vig.

Birch T N 16 E 54 = 35.64 ft.

Birch 7 S 35 W 4 = 2.64 ft.

F. A. Wanner.

135-19

272

windy & raining.

May 3, 1915 Continued.

A.M.

Asp. 8 N 58° W 59 = 38.93 ft.

Asp 10 S 54° W 66 = 43.56 ft.

We are unable to find anything here and we quite for it starts to rain.

Dinner with Mrs. Carson.

P.M.

As Knootson promised me that he would set this corner and he said he had found it we row over to Longs but Mrs. Long tells me Knootson went to Brainerd and would not be back until Wed.

Supper and overnight with Mrs. Carson.

May 4, 1915 Cont. for Hame Brook.

A.M.

I go over and check on a few of the old stumps that might have been the old F.A. Hamer.

-272

9

raining.

May 4, 1915 Continued

A.M.

B. J. S. but do not find
any that check with U. S.
notes quit for rain.

Dinner with Mrs. Carson.

P.M.

We row across lake
get transit and set M. C.
No. 51 from the old ^{new} B. J.
stump which is still
there and plainly marked.
Over night with Carson.

May. 5, 1915 Cont for Home Brook
Nobody works. I am waiting
to get some notes from Knothorn.

May. 6, 1915 Cont for Home Brook
Nobody works.

F. A. Hanner.

Working for Home Brook Twp 135-29.

April - May

	27	28	29	30	-	1	2	3	4	5	6	7	8	9	10	11	12
Frank A. Donner	1	1	1	1	-	1	5	1	1 1/2	0	0	1	1	1	1	1	1
Expences	190	0	0	0	-	0	0	0	0	0	0	26	0	0	35	0	130
John Carson	0	1/2	1	1	-	1/2	1	1/2	1/2	0	0	1	1	1	0	1	
Herburt Anderson	0	1	1	1	-	1	1	0	0	0	0	0	0	0	0	0	0
Board to Mrs. Carson	"	"	"	"	"	"	"	"	"	"	"	"	"	"	"	"	"
John Zumbahlen	0	0	0	0	0	0	0	0	0	0	0	1/2	0	0	0	0	0
Godliep Zilke	0	0	0	0	0	0	0	0	0	0	0	0	1	1/2	0	0	0
Ernest Wolf	0	0	0	0	0	0	0	0	0	0	0	0	1	1/2	0	0	0

272

(10)

Frank A. Donner.

272

(11)
135-29

May 7, 1915 Cont. for Home Brook.
A.M.

I call up Knutson at
Brainerd and he give me
the distance the true Sec.
corner of Secs. 16-17-20-21-
135-29 goes South from
East & West random line
which he run. From M.C.
No 42- to M.C. No. 51.

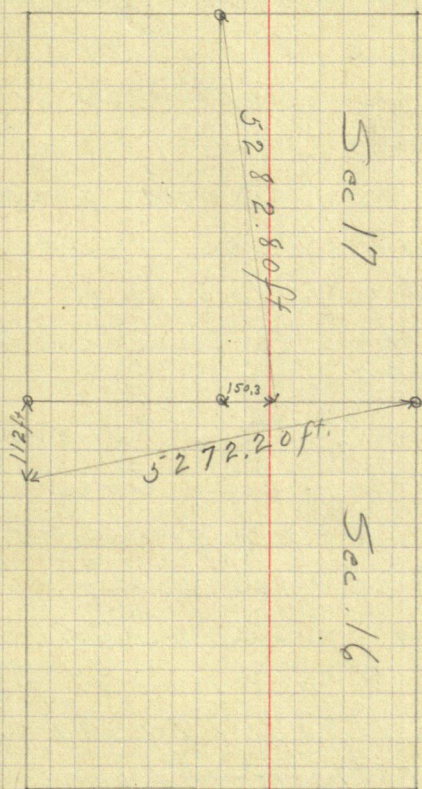
Jack Carson and I go
over and set the true Sec.
corner of Secs. 16-17-20-21-
135-29 on the true line
North & South 5 ft. from
random line running
East & West.

On the East side of
Sec. 17-135-29

@ 5272.205 the Sec. corner
(set by me) sets west 112 ft.
Correcting back on E.
side of Sec. 17. Hub @ 2636.1
goes west 56 ft. where I
set a 4" x 4" x 36" Aspen post
Frank A. Clouner.

Ma¹²/_p

272



T. 135 T. 29.

Donner Transit man
" & Carson Chainmen.

Frank A. Namer.

(13)

102845

272

135-29

May 7, 1915 Continued.

A.M.

for the true $\frac{1}{4}$ corner
bet. Secs. 16 - 17 - 135 - 29.

On East & West $\frac{1}{4}$
line true Sec. 17 - 135 - 29

@ 5282.8 E the $\frac{1}{4}$ corner on
the East side of Sec. 17
sets South 150.30 ft.

Quit for dinner with Carson.
P.M.

Correcting back on
E & W. $\frac{1}{4}$ line true Sec. 17.

Hub @ 2842.4 goes S. 80.76 ft.

John Zumburnen joins us.

Starting from true line
From ① @ 2842.4 I run 22° L. 322.9 ft. To

② thence 1°30' L 174.80 ft. 3

③ " 15°15' R 181.10 " 4

④ " 26°25' L 83.00 " 5

⑤ " 16°15' L 94.00 " 6

Town board comes out
to look over road.

Quit for rain about 4 o'clock.
Over night with Carson.

F. A. Hanner.

(14)
135-29 272

May 8, 1915 Cont for Home Brook.
A.M.

Ernest Wolf & Godlieb
Gilke join us.

We continue traverse

From	To
6	7
thence	27° R 137.60 ft.
7	8
"	21° 20' R 95.40 "
8	9
"	35° 49' R 348.60 "
9	10
"	19° 48' L 109.50 "
10	11
"	21° 35' L 120.70 ft.
11	12
"	16° 5' L 222.80 "
12	13
"	42° 33' R 292.70 " cross lake 200 ft. of water.

13	14
thence	10° 51' L 313.10 ft.
14	15
"	38° 27' L 150.80 "

Dinner with Mrs. Carson.
P.M.

We continue

From	To
15	16
thence	13° 32' L 208.40 ft.
16	17
"	17° R 94.30 "
17	18
"	45° 35' R 102.20 "
18	19
"	19° 28' L 122.70 "
19	20
"	12° 45' L 82.30 "
20	21
"	23° 10' L 83.50 "
21	22
"	5° 47' L 77.40 "

F. A. Hauer.

272

(15)

135-29

May 8, 1915 Continued.

P.M.

(22)	thence	11°23' L	91.20 ft.	To 23
(23)	"	27°18' L	76.50 "	24
(24)	"	7°2' L	110.80 "	25
(25)	"	6°27' R	250.60 "	26

Quit for the night @ Carson.

May 9, 1915. Cont. for Home Brook.
Sunday A.M.

We continue traverse

(26)	thence	28°51' R	141.20 ft.	27
(27)	"	16°40' R	215.00 "	28
(28)	"	1°24' L	565.70 "	29

Cross lake 270 ft across water

(29)	thence	26°14' R	103.80 ft.	30
(30)	"	10°15' R	70.40 "	31
(31)	"	38°21' R	1427.90 "	32
(32)	"	22°57' L	221.80 "	33
(33)	"	7°15' L	159.40 "	34 ^{old 34} leave Lake.
(34)	"	25°28' L	248.20 "	35
(35)	"	27°4' R	651.70 "	36
(36)	"	11°36' R	220.70 "	37
(37)	"	35°23' R	289.50 "	38
(38)	"	41°29' R	259.60 "	39

F. A. Haimen.

(16)
135-29

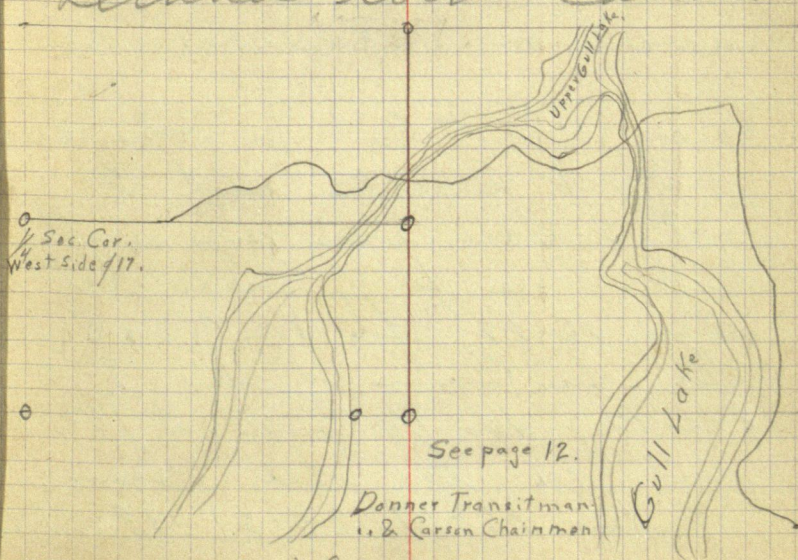
272

May 9, 1915 Continued.

A.M.

From Sta 39	three	$63^{\circ} L$	515 ft.	on old Grade ⁴⁰	
40	"	$18^{\circ} 38' L$	170.30 ft.		41
41	"	$40^{\circ} 12' R$	240.00 "		42
42	"	$53^{\circ} 10' L$	155.10 "		43
43	"	$74^{\circ} 25' R$	220.00 "		44
44	"	$48^{\circ} 50' L$	152.90 "	on old Grade ⁴⁵	
45	"	$13^{\circ} 30' L$	427.10 "	" " "	46

I entered true Sec. line
between Secs. 15-16-135-29
@ 433 ft. North of Sec. corner
of Secs. 15-16-21-22-135-29.
Linner with Carsons.



F. A. Linner

272

(17)

102845

135-29

May 9, 1915 Continued.

P.M.

Jack Carson & I correct
 $\frac{1}{4}$ line E & W thru Sec. 17.

Hub @ 4021 goes South 11.43"

" @ 661.2 " " 19.47"

" @ 1876.7 " " 53.39"

" @ 2367.1 " " 67.34"

" @ 2662.7 " " 75.75"

Quit for night with Carson.

May 10, 1915 Cont for Home Brook
 Waiting for Iron corners.
 Town Board tells me to
 wait on set irons.

May 11, 1915 Cont for Home Brook
 Jack Carson and I
 set 5 Galv. iron pipe with
 cap. One for $\frac{1}{4}$ Corner bet.
 Secs. 16-17, for M. C. N. 51,
 for Sec. Corner of Secs. 8-9
 -16-17, for $\frac{1}{4}$ Corner bet. 17-18
 and for the Sec. Corner
 of Secs. 16-17-20-21-135-29.

+

Frank A. Lanner

(18)

135-29

5272

May 12, 1915 Cont. for Home Brook.
A.M.

We have a meeting @ Jud
Bussell's place and I had in all
my bills for survey which
are allowed. I get my check for
\$70.96 and Mr. Tuttle takes me
to Pequot.

Dinner @ Tanger Hotel 50
P.M.

I take 3.24 train for Walker.
R.R. fare .80. Cars gets on @ Backus.
We both go thru to Walker.
Supper @ Chase Hotel.
Over night @ " " "

May 13, 1915

Work in office all day.

May 14, 1915

Work in office all day.

Frank A. Hanner.

19

①
140-29 Raining

May 15, 1915. Working for Can. Co.
A.M.

Leave Walker on 9.40
train for Hackensack to
see Mr. Riley. Hotel bill
@ Chase Hotel \$5.75. R.R. fare .33
Dinner @ Lake View Hotel.
P.M.

Nobody comes in for me
so I take 4.19 train for
Walker. R.R. fare .33 I go
up to office and make
out bills for Home Brook
Supper and over night
@ Chase Hotel \$1.00.

Sunday.

May 16, 1915 Cont. Sunday.
for Cass County
A.M.

I take 12.37 train back
to Hackensack R.R. fare .33
Breakfast @ Lake View Hotel.
Mr. Harry La Vallee
comes in for me sent
by Mr. W.C. Riley.
Dinner @ Lake View Hotel.

J. A. Danner.

(2)

20

140-29 snowing.

May 16, 1915 Continued

P.M.

Mr. La Valle takes Geo. Dilworth, myself, outfit and five 2" x 48" Galv iron pipe out to his place where we stay during the time we work on survey of Sec 11-140-29. Supper and go to night with Mr. La Valle.

May 17, 1915 Cont for Case Co.
A.M.

We walk over to see Mr. Riley and he gives me a small blue print of the land he wants to fence and tells me about the work that has been done here by Ed. O'Shannon. We walk over to Sec. Co. of Secs. 2-3-10-11-140-29 where I find a iron pipe set by me for the true Sec. Co. F.A. Shannon.

21

(3)

140-29 snowing

May 17, 1915 Continued

A.M.

I start Geo. Dilworth to
brush out the line
running S. 89° 35' E var. 8° 30'

I walk down and look
for sec. corner of Secs. 10-11
14-15 but I do not find it.
Dinner with La Valle.

P.M.

Dilworth continues
brushing and I go and look
for sec. corner. I find a 2" x 48"
Galv. iron pipe set for the
true sec. corner of Secs. 10-11
- 14-15 - 140-29. I walk down
to M.C. No. 20 where I find
a post for true M.C. with
two N.P. B.T.S. I walk along
lake shore and find a stake
with tack set for M.C. No. 21
with two oak B.T.S. marked
plainly. I look for M.C. No. 22
140-29 but find nothing.
Quit for snow. Over night with La

F. A. Hamer.

Working for Cass County 140-29.

May

	15	16	17	18	19	20	21	22	23	24	25	26	27	28	29	30	31
Frank Donner	11	11	11	11	11	11	11	11	11	11	11	11	11	11	11	11	11
Expenses	98	0	0	0	0	35	0	160	0	0	0	0	0	0	0	0	0
Geo Dilworth	0	0	1	1/2	0	0	0	0	0	0	0	0	0	0	0	0	0
William Begreen	0	0	0	0	0	0	0	0	0	0	1	1	1	1	0	0	1
Ernest Tuster	0	0	0	0	0	0	0	0	0	0	1	1	1	1	1	0	1
Elmer Horst	0	0	0	0	0	0	0	0	0	0	1	1	1	1	1	1	1
Mrs Harry La Valle Board	11	11	11	11	11	11	11	11	11	11	11	11	11	11	11	11	11
Team	5.00																

Note: See page 18, 38

Time Sheet Continued for June.

Harvity Auto

Board With Gentry
Donner Chose

140.29

May 18, 1915 Cont. for Cass Co.
A.M.

Hilworth and I go out
and continue line east.

@ 844.3 set Hub.

@ 996.9 " "

@ 1347 " "

I turn 60° L to triangle lake.

@ 10ft. enter swamp

@ 170 leave " "

@ 270.1 set Hub

@ 651.8 " "

@ 988.9 " "

Quit for dinner with La Valle.
P.M.

↖ I turn 60° to R.

Hilworth leaves and walks
to Hackensack. I cut
brush all P.M.

Supper with La Valle.

May 19, 1915. Cont. for Cass Co.,
A.M.

I call up auto livery
from North star camp and
Garrity come out and takes me

See Page 26

140-29

29

May 19, 1915 Continued.

A.M.

and outfit to Hackensack
because I can not get any
crew to work.

Dinner at Lake View Hotel.

P.M.

I call up Walker and
they tell me Ceno is
at Backus.

Wait @ Hotel for Ceno.
Supper and over night @ Hotel.

May 20, 1915 Cont. for Cass Co.

All day @ Lake View Hotel.
Hunting up crew

May 21, 1915 Cont. for Cass County.

I go to Walker on train
and help Ceno get
notes for work till Dec 2
140-29 Supper @ Chase.

May 22, 1915 Cont. for Cass County
A.M.

Leave Walker on 12.37 train
for Hackensack.

25.

(7)
140-29

May 22, 1915 Continued
Hack to see 2 in auto to start survey ^{stairway}
and back to Hackensack to get
crew. No charge for auto.

May 23rd 1915.

H. Lavalle and team with me & crew
to Woman Lake. No charge for team or
for time of myself & crew as I
put a day in for yesterday.

May 24, 1915 Cont for Cass County.
A.M.

Ernest Tinsler, Elmer Horst,
Wm Birgan and I continue
East from where I left off
on Sec. line bet. Secs. 2-11-140-29.
From 988.9 turn 60° to R.

@ 215.4 set Hub

@ 500 enter swamp

@ 675 leave "

@ 724.9 set Hub

@ 832 enter swamp

@ 918 leave "

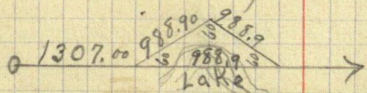
@ 976.8 set Hub.

140-29

May 24, 1915 Continued.

A.M.

@ 988.9 set Hub on true random line running E & W.



We continue East with random

@ 2543.5 set Hub.

@ 2661.4 " " turn 90° for

offset @ 146.4 set Hub. turn 90° R and Run parallel to random line.

@ 308 enter marsh

@ 403 leave " "

@ 491.8 set Hub.

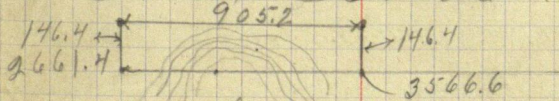
@ 905.2 " "

Dinner with La Vallis.

P.M.

I turn 90° to R

@ 146.4 set Hub and turn 90° to R, which brings me back on random line marking this Hub @ 146.4 @ 3566.6.



We continue East on random line.

27.

⑨

140-29

May 24, 1915 Continued.

P.M.

@ 37+88.3 set Hub

@ 4118 cross road using N & S

@ 4268.7 set Hub

@ 4795.8 " "

@ 4910 enter lake

@ 5301 leave "

@ 5378.1 set Hub

Look for Sec. corner of 1-2-
11-12-140-29 but am unable
to find any old B.T.S.

I leave one man to
sharpen the tools and I
go over and run a few
grades for Mr. Riley.
Over night with H. La Valle

May 25, 1915 Cont. for Cass County.

A.M.

Starting @ the Sec. corner of
Secs. 10-11-14-15 I run N. var 70°

@ 99.50 ft set Hub. turn 80° L.

@ 128.70 ft " "

@ 271.3 " " "

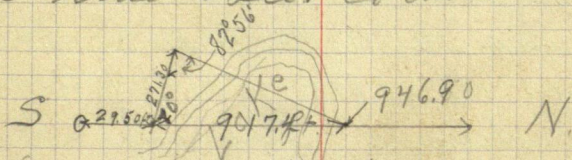
(10)
140-29

28

May 25, 1915 Continued.

A.M.

Sighting on Hub @ 29.50 ft. I turn
on Hub across lake which I set
from Hub @ 29.50 ft. and back-sighting
on true Sec. corner.



We continue North

@ 1328 set Hub

@ 1785.2 " "

Quit for dinner with La Valle.

P.M.

We continue North

@ 2372.4 set Hub.

@ 2614.8 " "

@ 2729 cross Road running NE & SW.

@ 3197.7 set Hub

@ 3429 " "

@ 3570 enter swamp

@ 3770 leave swamp.

@ 4630.3 set Hub goes West 45.24' to true line

Quit for night with La Valle.

29

(N)

140-29

May 26, 1915. Cont. for Cass County.

A.M.

We continue North.

@ 4865 enter swamp

@ 5075 leave "

@ 5281.30 the true sec corner
of Secs. 2-3-10-11 - 140-29 set
west 51.60 ft. $\text{Corr} = .00977 = \text{tan } 34'$ Starting @ true sec. corner
(iron set by (Geo) Drum Nov 8)

@ 250 enter marsh

@ 330 leave "

@ 725.8 set Hub

@ 1116.2 " "

@ 1297 enter slough

@ 1572 leave "

@ 1988.2 set Hub

@ 2761.2 " "

@ 2974.2 " "

@ 535.3 set Hub turn 90° R.

@ 199.5 set Hub turn 90° L.

Dinner in the woods

Note: For correct chainage of this Mile
See page (33) 54.

(12)
140-29

30

May 26, 1915 Continued
P.M.

We continue North on random
@ 32.6 set Hub = 3202.6 N
@ 3346.7 set Hub.
@ 3460 enter slew
@ 3575 leave "
@ 3862.1 set Hub.
@ 4260.6 " "
@ 4349.3 " "
@ 4591.3 " "
@ 5077.2 " " 9 ft from lake @ Westing
Quit for the night with LeVall.

May 27, 1915 Cont. for Cass County.
A.M.

We look for M.C. No. 69-140-29
where U.S. notes call for veg.

U.P. 14 N 72 E 46 =

U.P. 15 S 44 E 26 =

We find both B.T. stumps
plainly marked from which
I set a 4" x 4" x 36" brick post
for the true M.C. No. 69.
Starting from M.C. No. 69 and

31

(13)

140-29

May 27, 1915 Continued.

A.M.

backlighting on M.C. No. 67 (a
iron pipe set by (Cino) I run
East var. 9°

@ 42.6 ft set Hub

@ 189.00 enter lake

@ about 200 ft intersect N&S
line in lake @ about 5096 N.

@ 390.00 leave lake

@ 390.40 center of M.C. No. 67

We look for the N. W. Sec.

corner of Sec. 2 - 140-29

where M. S. notes for vig.

Mag P 10 S 14 E 50

W Birch 4 S 75 W 40

We are unable to find
anything of the old B. I. S.
Starting from M.C. No. 67 and
backlighting on true line
I run East var 9°

@ 224.6 set Hub

Quit for dinner in woods.

P.M.

We continue East.

(14)

32

140-29

May 27, 1915 Continued

@ 429.7 set Hub

@ 633.2 " "

@ 975 enter swamp

@ 1270 leave "

@ 1275.5 set Hub.

@ 1430.2 " "

@ 1923.8 " "

@ 2285.4 " "

Look for $\frac{1}{4}$ Sec. corner on North side of Sec. 2 - 140-29 but are unable to find any of the old B. & S.

Quit for night with La Valle.

May 28, 1915 Cont. for Cass County.
A.M.

We continue East Bergrum leaves
for Hackensack.

@ 2641.6 set Hub

@ 3172.4 " "

@ 36 enter slew

@ 37 leave "

@ 3736.8 cross old Hackensack & Longville road running N. & S.

@ 3911.1 set Hub

May 27, 1915 Continued.

A.M.

@ 3948 enter lake at high water mark.

We find a stake set by Cero for the Witness Corner on West side of Lake. Hidden in woods.

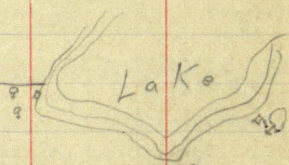
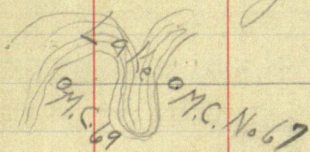
P.M.

We look for witness corner on South side of lake 246 lks. So. of the Sec. corner of the N.E. corner of Sec. 2-140-29 where W.S. notes call for viz.

W.P. 22 S 10 E 30

W.B. 10 S 65 W 50

We find the old S.E. B.P. standing and plainly marked. quit for rain over night with LaValle



(16)
140-29

34

May 29, 1915 Cont. for Cass County.
A.M.

We walk to witness corner
162.36 ft. south of the N.E. corner
of Sec. 2-140-29 where we
find the old S.E. B.T. plainly
marked from which I set
a 4"X4"X36" aspen post 18" in
ground for the true witness
corner.

Starting from witness corner
I run South var. 8°
@ 108.2 set Hub.
@ 231.6 " "
@ 573.5 " "

Dinner in woods.
P.M.

We continue South
@ 650 cross old road running E & W.
@ 1000.6 set Hub.

Quit for night and bail up.
Overnight with LaValle.

May 30, 1915 Cont. for Cass County
Sunday. Bergren comes back
after supper.

35

(17)

140-29. warm & clear.

May 31, 1915. Cont for Cass County.

A.M.

We continue South.

@ 1466.9 set Hub in middle
of New Hackensack & Longville road.

@ 1728.7 set Hub.

@ 1991.6 " "

@ 2189.6 " "

@ 2343 " "

@ 2566.7 " "

@ 2570 enter cedar swamp.

Dinner with La Vallée.

P.M.

I look for $\frac{1}{4}$ corner bet
Secs. 2-1-140-29 where U.S.
notes call for veg.

Spruce 10570 E 10 = 6.60 ft.

I find the old spruce standing
and plainly marked from
which I set a 4' x 4' x 45"
cedar post for the true $\frac{1}{4}$
Sec. corner.@ 2632.3 the true $\frac{1}{4}$ Sec. Cor.
sets out 10.50 ft.We continue South with random
line.

(25)

140-29

warm & windy. 36

May 31, 1915 Continued

32.75 leave night.

@ 3359.4 set Hub

@ 3781.5 " "

@ 3900.00 enter cedar swamp.

@ 4810.00 leave " "

@ 4866 enter Women Lake

@ 5105 leave " "

@ 5204.3 set Hub.

Quit for night with La Vallés.

June 1, 1915 Cont. for Cass County.

A.M.

Starting from river port (set by
Curo) for the Sec corner of Secs.
10-11-14-15-140-29 I turn 60° R.

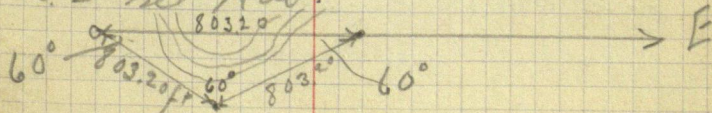
@ 300 enter swamp

@ 724 leave " "

@ 803.2 set Hub turn 60° to L.

I run to intersection of random
line running E & W.

@ 803.2 set Hub.



37

(18)

140-29

June 1, 1915 Continued

We continue with random
@ 901.4 set Hub.Quit for dinner with La Valle
P.M.

We continue East.

@ 1124 cross road running N. & S.

@ 1379 enter swamp

@ 1676 leave ..

@ 1988.8 set Hub.

@ 2338.1 10 ft. from

High water mark of Woman Lake.
Quit for night with La Valle.June 2, 1915 Cont. for Cass County.
A.M.Starting @ the $\frac{1}{4}$ Corner bet.
Secs. 2-1 - 140-29 Run West road

@ 166.5 set Hub

@ 372 ft. cross old road N & S.

@ 591.5 set Hub

@ 1248 cross new Hackensack &
Langville road bearing S.W. & N.E.
Quit for dinner with La Valle.

140-29 - Working for Cass County

[Note: see pages 43, 62]

June

	1	2	3	4	5	6	7	8	9	10	11	12	13	14	15	16	17
Frank A. Donner	"	3	"	"	1	0	0	3	"	3	1 1/2	3	0	7	3	2 1/2	3
Expenses	0	50	0	0	0	0	0	0	0	0	0	0	0	0	0	0	0
Wm Bergeen	1	1	1	1	0	0	1	1	0	1 1/2	1	0	0	1	1	1/2	1
Ernest Tusler	1	1	1	1	0	0	1	1	0	0	1	0	0	1	1	1/2	1
Elmer Harst	1	1	1	1	0	0	1	1	0	0	1	0	0	1	1	1/2	1

(20)

Mrs. La Valle's Board

Garnity Board dinner

Team

Ocio

Eys

Wm Bergeen

E. T. Allen

E. Harst

Cure

Mrs La Valle Board

Geo W. Miller

Miller's Board with La Valle's

250

1 1 1

3.00

1.61

88

39

(21)

140-29

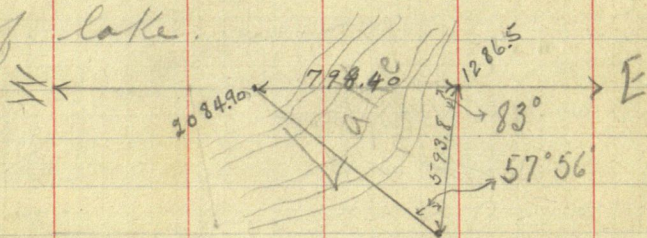
June 2, 1915 Continued.
P.M.

We continue West.

@ 1286.5 set Hub turn 83° to L
to triangle lake.

@ 438 cross new Hack. & Long.
road bearing N. & S.

@ 593.8 set Hub turn $57^{\circ}56'$
for L bet. Hub on E side & W side
of lake.



Hub on West side of lake - 2083.00 W

@ 2268.1 set Hub turn 90° R

@ 84.50 ft set Hub.

@ 242.5 " " turn 90° L

@ 127.20 " "

@ 215 enter lake.

@ 990 leave " & enter swamp

@ 1360 leave swamp

@ 1374.7 set Hub

Quit for night with La Valle.

(22)

40

140-29

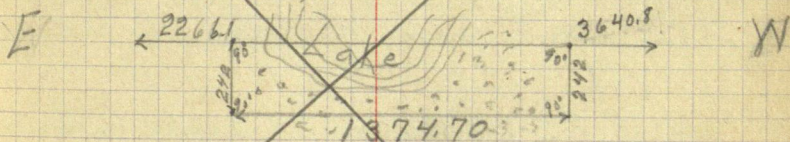
June 3, 1915 Cont. for Cass County
A.M.

From Hub @ 1374.7 turn 90° L

@ 25 ft enter swamp

@ 183 ft leave "

@ 242 set Hub which = 3640.8 on random



We continue west with random

@ 3681.6 set Hub.

@ 3969.5 " "

@ 4219.4 " "

Dinner in woods.

P.M.

We continue west.

@ 44 enter marsh

@ 4775 leave "

@ 4814.9 set Hub.

@ 5171 " "

@ 5311.3 " "

@ about 5332 cross N. & S. random line.

@ 5343.8 set Hub.

We walk down random line
on west side of Sec. 11-140-29.

140-29

June 3, 1915 Continued.

Correcting random line
on west side of Sec. 11.

Hub @ 2640.90 goes West 25.95 ft.
where I set a 40X4"X36" N.P. post
for the true $\frac{1}{4}$ Sec. corner on
the west side of Sec. 11-140-29.
with new B.T.S. viz.

N.P. 85 29°34' W 33.90 ft) with ticks.

N.P. 125 69°3' E 55.60 ft } var. 7°

Starting from true $\frac{1}{4}$ Sec. Cor.

I run N 89°58' E var. 8°

@ 570 set Hub.

Quit for night with LoValle.

June 4, 1915 Cont. for Cass County.
A.M.

We continue East

@ 865.9 set Hub

@ 1183.4 " " turn 90° L

@ 1877.5 " " turn 90° R

@ 80 ft enter swamp

@ 650 leave "

@ 750 set Hub turn 90° R

@ 1877.5 set Hub. turn 90° L

(24)

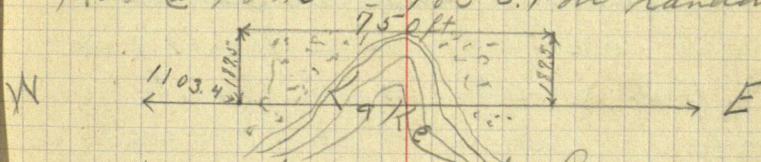
140-29

48

June 4, 1915 Continued.

A.M.

Hub @ 187.5 = 1853.4 on random.



Quit for dinner with La Valle.

P.M.

We continue East

@ 2165.2 set Hub.

@ 2375.8 " "

@ 2778.7 " "

@ 2855 enter High water mark on women Lake

Quit for the night with La Valle.

June 5, 1915 Cont. for Cass County.

Rains in the morning and we all go to Hackensack with Harry La Valle.

June 6, 1915 Sunday.

P.M.

We come back from Hackensack with La Valle.

Supper and over night with La Valle.

43

(25)

140-29

windy & cloudy

June 7, 1915 Continue for Cass County.

A.M.

Correcting random line on west side of Sec. 11-140-29

Hub @ 3961.35 goes west 38.70 ft. where I set a 4" x 4" x 36" oak post for the true $\frac{1}{16}$ corner.Starting from true $\frac{1}{16}$ cornerI run N $89^{\circ}58'$ E var. 8°

@ 100 ft enter swamp

@ 390 leave "

@ 757.6 set Hub

@ 1228.6 " "

@ 2640 " "

@ 3430.3 " "

@ 4128.7 " "

@ 4150 cross New Hackensack and Longville road bearing N & S.
Dinner with La Valle.

P.M.

@ 4412.8 set Hub

@ 5072.5 " "

@ 5090 enter High water mark on women Lake.

(25)

140-29

cold & raining

44

June 7, 1915 Continued.
P.M.

Correcting random line on west
side of Sec. 11-140-29

Hub @ 1320.45 goes west 12.90 ft.
where I set a 4" x 4" x 36" Birch post
for the true $\frac{1}{16}$ corner.

Starting @ true $\frac{1}{16}$ Corner I
run N 89° 58' E var 8°

@ 150 enter swamp.

Quit for night with La Valle.

June 8, 1915 Cont. for Cass County.
A.M.

We continue East.

@ 400 leave swamp

@ 491.9 set Hub.

@ 600 enter meadow

@ 925 leave "

@ 1226.2 set Hub.

@ 1693.50 " "

@ 1975.4 " " on high water
mark on Warner Lake.

Dinner with La Valle.

P.M.

Wait for Curo to come out.

140-29

June 9, 1915 Cont. for Cass County.
All take dinner out.

Waiting for Curo with special
field notes. Figure corrections
all day

June 10, 1915 Cont. for Cass County
Nobody works. Home notes
Sec 2. Rain all day. Buzzers $\frac{1}{2}$ P.M.

J. W. Curo comes out in P.M.
With Commissioner Krake in
auto and they get stalled.
They walk to North Star
Camp and Allen Wheeler
brings them over with lunch.
Lunch livery \$1.00

Harry La Valle takes team and
help Krake start for Backus.
Curo stays at La Valle's.

Bill Berggren accompanied
La Valle's team. $\frac{1}{2}$ day for Buzzers
Curo's trip chgd to see " "

Auto leaving Curo & Berggren
lines chgd. to see " "

Horners time chgd to see 2.

(27)
190-29

46

June 11, 1915 Cont. for Cass County.
A.M.

At the corner of Sec. 1-2-11-12
U.S. notes call for viz.

Fir 65 35 E 20

Bl. Oak 85 32 W 65

Brick 5 N 50 W 48

We find the old S.E. B.T. standing
plainly marked and the stump
of the old N.W. B.T. which
check out for course and
measurement for the original
position of the B.T.S. but the
S.E. B.T. is a Brick instead
of a Fir we set a $2\frac{1}{4} \times 48$ "
Galv. iron pipe with cap and
spike for anchor rod and
driven it full length in
the ground in a 6" mound of
dirt covering a small mound
of rock piled around iron
and marked new B.T. S viz.

Cross in highest point of 4 ft. stone
bears N $31^{\circ} 3'$ W 9.45 ft.

N.P. 14 N $17^{\circ} 24'$ W 37.00 ft.

47

28

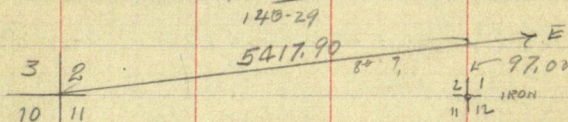
2-11-1840-30

140-29

June 11, 1915 Continued
A.M.

Bals. 2 N 28° 23' E 24.60 ft
 Bir. Stump 85 31° 40' E 14.35 ft.
 N.E. corner post of porch on
 Harry La Vallis new house
 bears S 44° 10' W 74.20 ft.
 all at 8° variation.

Connecting
 at a point on the random
 line 5417.10 E the corner to
 Secs 1-2-11-12 sets South 97.00 ft.
 [5417.91]



In running random line
 bet. Secs. 2-11 we set
 18 hubs at the following points
 @ 844.30 - 996.90 - 1307.00 -
 2295.90 - 2543.50 - 2661.40 -
 3566.60 - 3788.30 - 4268.70 -
 4795.80 - 5378.10 - 5417.10 Hub
 @ 5417.10 iron cor to Secs 1-2-11-12
 sets South 97.00

Frank R. Danner

June 18-1915
could

(29)

2-11-140-29

48

Correcting back [E.01791] ✓

5417.10 gacs S 97.00

4795.80 " S

4268.70 Chain S

4062.82 " S 72.75 To E $\frac{1}{16}$ bet Secs 2 and 11

3788.30 " S 67.85

3566.60 " S 63.88'

2708.55 " S 48.50 To $\frac{1}{4}$ bet 2 & 11

2661.40 " S

2543.50 " S

2295.95 " S

1354.27 " S 24.25 To W $\frac{1}{16}$ bet 2 & 11

1307.00 " S

996.90 " S

844.30 " S

PM

I lay off rich in PM - Curo - Berggren
Hort & Tusler work in PM and
set hubs and tall stakes and cut out
the line line $\frac{1}{4}$ mile west they set
Hub and back for East $\frac{1}{16}$ and
start line North @ 8°

They also set stake in West edge
of swampy lake for line $\frac{1}{4}$ bet Secs
2 & 11. and start pocket line N 8°
all at Harry L. Keays

Frank R. Conner

2-11-140-29

Saturday June 12-1915

Rained hard all day
Circs and I figure corrections
Crew lay up.

I'm running random line
South bet. Sec. 1-2 on 8°30'
we began at witness Por.
@ 246 Hts. = 162.36 ft. U.S. ch.
South of N.E. Cor. of Sec. 2.
and have set hubs South as follows:

1081.20 - 231.60 - 573.50 - 1000.60 Hubs

Ht 1188.00 Temp N $\frac{1}{16}$ bet 1 & 2

at 1728.70 - 1991.60 - 2189.60 - 2343.00

Ht 2508.00 Temp $\frac{1}{4}$ bet 1 & 2

2566.70 - Hub 2632.30 The $\frac{1}{2}$ cor
bet 1 & 2 sets West 10.50 ft

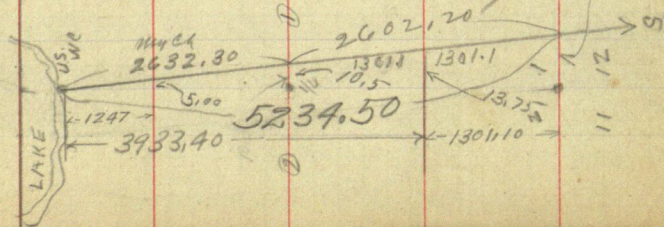
3359.40 - 3881.50 - Hubs

Ht 5148.00 Temp Cor 1, 2, 11, 12

5204.30 Ht 5234.50 the

line runs on to Sec 1-2-11-12-

140-29 sets West 17.00 ft



June 12-1915
Continued

(31)

2-11-1440-30
Cass Collins

50

Correcting NE $\frac{1}{4}$

Ht 2508.00 ft So of H.C.

the line $\frac{1}{4}$ but 1 & 2 sub 124.30

ft South to 2632.30 S. and
10.50 ft West.

Hubs go West [.003989^W] } NE $\frac{1}{4}$
and South [.049561^S] } Sec 2.

1188.00 goes 58.88 to 1246.88-S.

Thence West 5.00 ft to North

$\frac{1}{16}$ cor but 1 & 2.

108.20 goes West 0.43

231.60 " " 0.93

573.50 " " 2.29

1000.60 " " 4.00

1728.70 " " 6.92

1991.60 " " 7.97

2189.60 " " 8.75

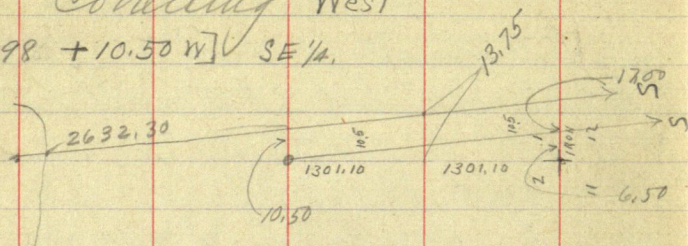
2343.00 " " 9.37

2566.70 " " 10.26

32

140-29

Concluding West

$$[0.002498 + 10.50 w] \checkmark \text{ SE } 1/4.$$


$$3359.40 \text{ S} = 727.10 \text{ S} + \text{gals W } 1.81 + 10.50 = 12.31$$

$$3881.50 \text{ s} = 1249.20 \text{ s} \quad \dots \quad 3.12 + 10.5 = 13.62$$

Sunday June 13th 1915

Rain stops near morning
and it clears off about 9. A.M.
still heavy Turbid from North-West

140-29

Monday June 14th 1915.

A.M.

Starting at the true N $\frac{1}{2}$ Cor.
between Secs. 1-2-140-29, I run
random West.

@ 133.80 - Hub.

@ 263.50 - "

@ 759.10 - "

@ 1273.30 - "

@ 1508.20 - "

Here I leave to see a doctor
and the crew puts in remain-
der of day clearing this line
west by means of pickets.

Tuesday June 15th 1915.

Following Curo's instructions, I leave Geo. S. Williams' place, where I have boarded while on the survey of the range line between 141-29 and 141-28, and proceed to La Vallés' place to help Frank A. Donner on the survey of Secs. 2 and 11, 140-29.

I arrive at La Vallés' at 8:30 a.m. and take Donner's crew (William Bergreen, Ernest Insler, and Elmer Horst) and continue west on random begun yesterday by Donner, through about center of N. half Sec. 2-140-29.

@	2243.10	-	Kub.	
@	2618.90	-	"	@ 5514.70 the
@	3065.20	-	"	true N $\frac{1}{4}$ Cor.
@	3828.50	-	"	betw. Secs.
@	4254.80	-	"	2 & 3, 140-29
@	4652.90	-	"	Sets North
@	5400.00	-	"	194.00 feet.
				90° from random.

Geo. W. Miller

140-29

Wednesday June 16th 1915.

Rain all morning. No work.

P.M. Frank A. Blonner takes Ernest Lusler and Eliner Horst and starts a random north from the true E/W Cor. between Secs. 2-11-140-29. He runs about 2000 feet without chaining and quits for night at La Valle.

William Bergreen and I check-chain the W. boundary of Sec. 2-140-29.

@ 723.00	-	Hub.
----------	---	------

@ 1113.80	-	"
-----------	---	---

@ 1984.50	-	"
-----------	---	---

@ 2755.70	-	"
-----------	---	---

@ 2964.50	-	"
-----------	---	---

@ 3498.70	-	"
-----------	---	---

@ 3530.40	-	"
-----------	---	---

@ 3674.40	-	"
-----------	---	---

Quit for night.

Greenmiller

140-29

Thursday June 17th 1915.

Fair & warm.

Groom Miller. Transit & chain.

William Burgeen. Flag & chain.

Ernest Luster. Axe.

Eliener Horst. ..

300' steel Tape. New Gurlay Transit.

Donner leaves for Hackensack
to see doctor.Miller & crew cont. check-
chaining W. boundary Sec. 2-
140-29.

@ 4190.00 - Hub.

@ 4677.20 - ..

@ 4919.70 - ..

@ 5403.90 - ..

@ 5424.10 - N.W. Cor. Sec.

2-140-29 sets 66.00' West.

We now go back over
random and set $\frac{1}{4}$ and $\frac{1}{16}$ Cors.
as per diagram on following
page.

Groom Miller.

(37)

56

140-29

N.W. Cor.
Sec. 2. □

114.5'

5424.10

1373.7

N $\frac{1}{2}$ Cor.

85.88'

4068.08

N $\frac{1}{4}$ Cor. B

57.25'

2712.05

N $\frac{1}{6}$ Cor.

28.63'

1356.03

S.W. Cor.
Sec. 2.G. A. Danner
Grounville

We get only the N $\frac{1}{6}$ Cor. set when
rain starts and we go in.

Grounville,

140-29

Friday June 18th 1915.

Rain all morning & we
do not go out.

P. M.

Growmiller. Transit & chain.

Wm Bergreen. Flag & chain.

Ernest Tuler. Axe.

Elmer Hanst. "

300' steel tape. New Hurley Transit.

We set the $\frac{1}{4}$ cor. and the $3\frac{1}{16}$
cor. on W. boundary of sec. 2-
140-29, as shown on diagram
on Page 56, this book.

We then go to the true $E\frac{1}{16}$ cor.
on S. boundary Sec. 2-140-29.

Starting at this point we
run a random north on
 $N 0^{\circ} 13' E$ (var $8^{\circ} 30'$) without
chaining.

Run about $\frac{1}{4}$ mile & quit
for night.

Growmiller—

(39)

58

140-29

Saturday June 19th 1915.

I ride to Hackensack, intending to take train to Walker to see John W. Curo regarding this survey. arrived in Hackensack, I find a letter from Curo stating that he will come out here on Tuesday next. I walk back to La Valle.

Curo does no work.

Gronmiller.

59

(40)

146-29

Sunday June 20th 1915.

all day at La Valles. No work.

Grover Miller.

(44)

60

140-29

Monday June 21st 1915.

Fair warm.

Growmiller. Transit.

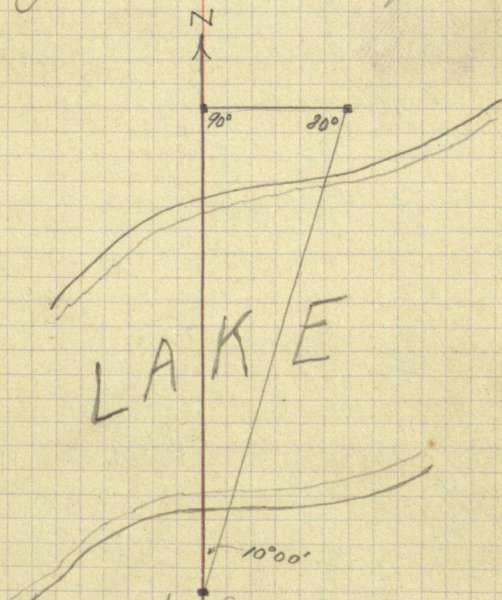
Elmer Horst. Arc.

Ernest Tusler. "

William Bergreen. Flag.

We cont. n. on the line begun
last Friday, being random line
through about center E 1/2 Sec. 2-140-29.
We do no chaining.

I triangulate the lake as follows:



Over night with La Valle.

Growmiller.

140-29

June 21, 1915 Cont for Cass County.
P.M.

I come up from Brainerd. on 419 train to Hackensack. I meet Curo on train he gives me a telegram for Miller and he also gives me some notes which he received from St. Paul from which we can set the true N.W. Sec. corner of Sec. 2-140-29

I get off at Hackensack and Curo goes to Walker.

It rains hard for about $\frac{1}{2}$ an hr. and then I get Mr. Garity and have to take me out to Harry La Valle. Supper and over night with "Miller walks to Hackensack"

Frank A. Howe.

140-29 Working for Cass County.

16
16
16

62

July

June

	18	19	20	21	22	23	24	25	26	27	28	29	30	1	2	3	4	5
Frank A. Danner	0	0	0	0	0	0	0	0	0	0	0	0	0	0	0	0	0	0
Expenses	0	0	0	0	0	0	0	0	0	0	0	0	0	0	0	0	0	0
W ¹⁰² Bergreen	1/2	0	0	1/2	1	1	1	1	1	1	1	1	1	1	1	1	1	1
Ernest Tusler	1/2	0	0	1	1	1	1	1	1	1	1	1	1	1	1	1	1	1
Elmer Horst	1/2	0	0	1	1	1	1	1	1	1	1	1	1	1	1	1	1	1
Geo. W. Miller	1/2	0	0	1	0	0	0	1	1	1	1	1	1	1	1	1	1	1
Mrs L. A. Valles	0	0	0	1/2	4	4	4	4	4	4	4	4	4	4	4	4	4	4
Board	4	4	4	4	4	4	4	4	4	4	4	4	4	4	4	4	4	4
Tusler	4	4	4	4	4	4	4	4	4	4	4	4	4	4	4	4	4	4
Miller	4	4	4	4	4	4	4	4	4	4	4	4	4	4	4	4	4	4
Curo	4	4	4	4	4	4	4	4	4	4	4	4	4	4	4	4	4	4
Garrity Livery	0	0	0	0	0	0	0	0	0	0	0	0	0	0	0	0	0	0

430

5.00

140-29

clear & warm.

June 22, 1915 Cont for Cass County
A.M.

I take crew and walk over to the N.W. Sec. corner of Sec. 2 - 140-29 and from the notes which I received from St. Paul I set a 2"x48" Galv. iron pipe with cap 30" in ground 146.50 ft. East of M.C. No 68 for the N.W. Sec. corner of Sec. 2 - 140-29. From the true Sec. corner just set by me I measure over 23.10 ft. East where I set a 2"x48" Galv. iron pipe with cap 24" in ground for the true M.C. No 68. Dinner in the woods
P.M.

On line running N & S on West side of Sec. 2 @ 5424.10 the true N.W. corner of Sec. 2 - 140-29 sets W 68.00 ft.

Connecting line on W side of Sec. 2. Hub @ 4068.08 goes W 51.00 ft. where I set a 2"x48" Galv. iron pipe with cap 30" in ground for the true N $\frac{1}{16}$ corner.

J. A. Donner

140-29

June 22 Continue for Cass Co.
A.M.

We follow the $\frac{1}{16}$ line
thru the East half of Sec. 2-140-29
about $\frac{3}{4}$ of mile from here we
continue bushing North with
out chaining

We intersect E & W. random line
on North side of Sec. 2 @ 3820.8 F
On North random line @ 3964.60
the true W.C. to the S.W. corner of
Sec. 36-140-29 sets So. 13.8 ft.

We walk back to the S $\frac{1}{16}$ corner
on the East side of Sec. 2 where I set a
2" X 48" Galv. iron pipe with cap 30"
in ground for the true S $\frac{1}{16}$ Cor.
Quit for rain.

It stops raining about
10 o'clock so I take two iron
pipe and walk up the South
Sec. line of Sec. 2-140-29

@ 4062.82 (where Curro set hut)
I set a 2" X 48" Galv. iron pipe
with cap 30" in ground for
the true East $\frac{1}{16}$ corner.

D. A. Blount.

(47)

66

140-29

June 13, Continued
A.M.

@ 2708.55 (where Curo set Hub for true $\frac{1}{4}$ Cor.) I set a 2" x 48" Galv. iron pipe with cap 24" in ground for the true $\frac{1}{4}$ corner bet. Secs. 2-11-140-29
Dinner with La Valle.

P.M.

We walk to the $5\frac{1}{2}$ corner on the East Sec. line of Sec. 2-140-29 and run $N 89^{\circ} 58' W$ var $7^{\circ} 30'$

We run a line about 1550 ft and quit for rain just 4 o'clock.
Dinner with La Valle.

140-29

June 24, 1915 Continue for Cas. &
P.M.

Durbin, Hunt & I walk to $\frac{1}{16}$ line
where we left off yesterday and
continue west about half mile.

Quit for dinner in woods.

We continue $\frac{1}{16}$ line west
without chaining.

@ - the true S $\frac{1}{16}$ corner on
the West line of Sec. 2 sets N. 84.3 ft.

We walk to the South Sec.
line of Sec. 2-140-29.

Connecting S. Sec. line

Hub @ 1354.27 goes South 24.25 ft
where I set a 3" x 3" x 36" post for
the true W $\frac{1}{16}$ corner on the South
Sec. line of Sec. 2.

Starting from true $\frac{1}{16}$ I run North
var 8'15"

Quit for night with La Valle.

Miller & Bergman set signs all
day.

J.A. Llaner.

140-29

June 25, 1915 Cont for Cass County.

A.M.

Miller, Bergren, Tusler & Hout walk to the $\frac{1}{4}$ running N thru the W half of Sec. 2 - 140-29 and continue $\frac{1}{4}$ N. about half mile and quit for rain. 10 o'clock when it starts to rain.

I write up notes and figure corrections all morning.

Dinner with La Valle.

P.M.

Miller & Bergren go up the East Sec. line of Sec. 2 and bank up river Cor.

I take Tusler and Hout and go down the South line of Sec. 2 and bank up corner.

At 4 o'clock we quit for rain.

Over night with La Valle.

June 26, 1915 Cont for Cass County.
A.M.

Miller and crew walk to the West $\frac{1}{4}$ line thru the W half of Sec. 2 and continue $\frac{1}{4}$ line N to about 3900 when they break the brush hook and they come in for dinner.

I start for Hackensack with the intention of getting a ride with Frank La Valle but he leaves ahead of me. I start to walk and when I get about 4 miles I start getting weak so I turn back.

Crew comes out about 11.30 with launch from across lake. Dinner with La Valle.

P.M.

Forest Insley goes home for a couple of brush hooks.

Miller, Bergren & Host go out and mound 9 Sec. corners.

Crew & I stay in and figure note all afternoon.

SD
140-29

70

June 27, 1915 Sunday
Nobody works.

Bergren & Gursler take La Valle's team and take Curo to Bergren's place. From here Krake takes him to Hackensack.

June 28, 1915 Cont. for Cass County.
R.M.

Miller transitman, Slower flagman Bergren, Gursler & Horst brushing.

We continue with the $\frac{1}{16}$ line north thru the west half of Sec. 2 - 140 - 29.

We come 40.70 ft to the East of the north $\frac{1}{16}$ corner.



We continue true line from N $\frac{1}{16}$ to where we intersect the true Sec. line on the N. side of Sec. 2 where we set a 2" x 48" Galv. iron pipe with cap over a five foot

(52)
190-29June 28, 1915 Continued.
A.M. ..

piling drove down to a solid bottom.

Dinner with La Valle.

P.M.

Starting at the true $\frac{1}{4}$ Corner
on the South side of Sec. 2
we run N var. 8° We cut a line a little over
half a mile and quit for night.
Over night with La Valle.June 29, 1915 Cont. for Cass County.
A.M.~~Miller takes crew and
continues the line N to the Sec.
line on the North side of Sec. 2.~~~~I lay up sick. Worked to hard yesterday.~~~~Dinner with La Valle.~~Miller walks over to Rosburg
to telephone. Dulser, Bergeum and
Hout go out and bank corners.I lay up sick worked to hard
yesterday. Dinner with La Valle.

J.A. Homer

June 29, 1915 Continued
P.M.

Muller takes crew and continues the $\frac{1}{4}$ line running N & S. thru the center of Sec. 2-140-29 which we started yesterday P.M.

We miss the center $\frac{1}{16}$ of the N half of Sec. 2-140-29 - 37.1 ft. East.

Starting at the true center $\frac{1}{16}$ corner we run North on true $\frac{1}{16}$ line.

On the N boundary of Sec. 2.

At 2517.8 E we intersect E & W random line on N boundary.

Correction to N boundary (00348)

Hub at 2517.8 goes South 8.76 ft. where we set a 2" x 48" Galv. iron pipe for the true $\frac{1}{4}$ corner on the N boundary of Sec. 2-140-29.

Quit for the night.

I stay in and figure correction and work on plat of Sec. 2.

Over night with La Valle.

June 30, 1915 Cont. for Cass County.
A.M. ..

Miller and Bergren set corners in Sec. 2 on the N. Sec. line.

I take Host and Tuler and walk to the W 1/4 corner on the S. side of Sec. 2-140-29.

Starting from the true W 1/4 corner I run South $var. 7^{\circ}15'$. We run a little over a quarter of a mile and quit for dinner.

Uline with La Valle.

P. M.

As Mrs. Harry La Valle says she can not give us any more to eat than she has been and as the crew are all starving with the meals she has been giving us we all decide to camp out.

Miller and Bergren go out and continue setting corners in Sec. 2 and quit about 3 o'clock on account of rain.

I stay in and write up notes get everything read to move.

140-29

June 30, 1915 Continued.

P.M.

and check over the board account with Mrs. La Valle.

Horst & Tinsler go over to A.A. Tinsler's place to get tent and camping outfit and enough provisions to last us a day or two. We pitch the tent about 5.30 and then get supper at our No. 1 camp.

All have supper and over night @ camp No. 1

After supper Tinsler and I row over to Longville for supplies as we find we have not enough to last us.

Get back about 11 o'clock. Bill for supplies \$3.50

140-29

July 1, 1915 Continue for Cass County.

A.M.

Miller, Host & Bergren go out and cont.
setting corners in Sec. 2 - 140-29.

About 10.30 Bergren comes in and says
he is not feeling well.

Miller & Host continue setting corners.

Tulser and I stay in and fix camp
and I figure corrections and write up notes.
All have dinner at Camp No. 1

P.M.

It rains until about 3 o'clock.
All stay in camp.

About 3.30 we take crew
and walk to the North boundary
of Sec. 2 - 140-29 and set over the
three corners on the N boundary
to their correct place where
they now set and will always
remain there in the future.
Supper and over night @ Camp.

Perhaps.

(57)

July 2, 1915 Continue for Cass County
A.M.

Miller, I and Horst walk to the Center $\frac{1}{16}$ of the East half of Sec. 2-140-29 where we set a 2" x 48" Galv. iron pipe with cap for the true Wit. Corner 50.1 ft South of the true Center $\frac{1}{16}$ corner of the East half of Sec. 2. on account of the true $\frac{1}{16}$ corner being in the lake.

We take a boat and row across the lake to where we intend to set a true Wit. Cor. East of the true Center corner of Sec. 2 because the true Center corner falls in Bailey Lake. Starts to rain and we quit for dinner @ camp.

P.M.

Miller and Horst go out to continue setting corners on the $\frac{1}{4}$ line running E & W thru the center of Sec. 2-140-29.

Starts to rain and they quit for night @ camp.

I lay up being sick.
Tusler works in sec 2 - on stakes for 1572
J. A. Hanner.

(38)
140-29

July 3, 1915 Cont. for Cass County.

Rained all day nobody works. I leave camp about 10.30 for Hackensack to get our chuck we order Friday.

I get into Hackensack and Charles Woods tells me he sent out a box of chuck with A. A. Tinsler.

I walk down to W. Spains and call up the North Star Camp and tell Ernest Tinsler to go over to his father's place and get the box with chuck.

I go over to the Lake View and get a little dinner.

Stay at Lake View over night.

July 4, 1915 Cont. for Cass County.

Sunday nobody works.

I have breakfast and dinner at Lake View Hotel. I get 10 loaves of bread from Mrs. Chester Lantry (\$1.10) and start for camp.

Supper and over night @ Camp.

J. A. Lanning.

190-29

July 6, 1915. Continued.

A.M.

We walk to the center 1/16
Corner of the West half of Sec. 2
and set that by intersection of
the true lines.

Dinner at Camp.

P.M.

We go out and set the
corners on the 1/16 line running
E & W thru the center of the
So. half of Sec. 2 by intersection
of the true lines.

W 1/16 on S 1/16 line thru the So.
half of Sec. 2 sets 66' N & 13.6' W from
P.I. of randoms.

1/4 corner center of S 1/2 on S 1/16
line sets 44' N & 12.4' W from P.I. of randoms.

E 1/16 of S 1/2 on S 1/16 sets 22' N &
17.1' E from P.I. of randoms.

Quit for night at camp.

J. A. Clower.

Wed.

140-29

July 7, 1915 Cont. for Cass. County.

A.M.

Tester Miller & Horst go out to the West $\frac{1}{2}$ line thru the W half of Sec. 11-140-29 and continue $\frac{1}{2}$ line South which I started a few days ago.

I stay in camp sick.

Remain at camp.

P.M.

Miller and Horst run a traverse of McQueen Lake from the N.E corner of Sec. 11-140-29 to the W. corner to M. C. No 21.

For notes of this traverse see P. 83.

Over night at camp.

Thurs.

July 8, 1915 Cont. for Cass. County.

A.M.

Miller and Horst go out and continue $\frac{1}{2}$ line South thru the W half of Sec. 11-140-29

I stay in camp intending to walk being unable to do much in the bush

80

Note: It was necessary to go to
Walker anyway; to plat work
done and check same and
compare special U.S. notes.

(62)

140-29

July 8, 1915 Continued.
A.M.

About 9.30 Miller comes in
with the transit broken.

Caused by falling over a log.

I go over to North Star
Camp and call up Spain tell
him to send out a team
to get Miller and I.

Dinner at Camp.

P.M.

Miller and I take outfit
and ride to Hackinsack with
Spain's team. Livy \$5⁰⁰

We leave Purler and Hunt
in camp.

We take 4.19 train for Walker
R.R. fare .66

Supper and over night
at Chase Hotel.

Cure on plat & acreage Sec. 11.

Friday.

July 9, 1915. Can't for Care.
Cure & I work in office all day
on plat and acreage Sec. 11

Working for Cass County. Cont.

July

	6	7	8	9	10	11	12	13	14	15	16
Frank A. Donner	7	0	1	1	0	0	0	0	0	0	0
Expenses	0	0	66.33	0	0	0	0	0	0	0	0
Geo. Miller	1	1	1	1	1	1	1	1	1	1	1
Elmer Horst	1	1	1/2	0	1/2	1	1	1	1	1	1/2
Ernest Tusler	1	1	1/2	0	1/2	1	1	1	1	1	1/2
Walter Kinkle	0	0	0	0	0	1	1	1	1	1	1/2
Curo	0	0	1	1	1	0	0	0	0	0	0

G. A. Donner. Grossmiller

Saturday 2-11-140-29.

July 10th 1915. Cloudy.

Frank A. Donner is unable to continue the work on this survey. He remains in Wacker and I take 12:37 A.M. train for Hackensack. Fare 33¢.

Arrive at Hackensack and get bed & breakfast at Spain's hotel.

I buy a supply of grub at Woods' store and at 8:30 A.M. Charley Woods drives me out to the camp at Sec. 11-140-29 in his car.

Arrive at camp at 10 A.M.

P.M.

I walk over to Kinkle's place and hire Walter Kinkle to assist me as axman for a few days.

Tusler and Horst carry iron corners from Harry LaVall's place to various points in Sec. 11.

Grover Miller.

and woods with
Cass on plat passage
of Sec. 11

(65)

83

2-11-140-29

Notes of Traverse of Lake Shore E. Boundary Sec. 11.

Point A = NE Cor. Sec. 11.

Point A' = Wit. Cor. to M.C. #21.

Gurley Compass.

Distances Paced.

From	To	Course	Dist.	From	To	Course	Dist.
A	B	South	38'	U	V	S 7° W	250'
B	C	S 30° W	105'	V	W	S 29° E	172'
C	D	S 5° E	235'	W	X	S 86° E	125'
D	E	S 30° W	600'	X	Y	S 46° 30' E	275'
E	F	S 13° E	220'	Y	Z	S 28° 30' E	210'
F	G	S 21° W	135'	Z	A'	S 15° E	215'
G	H	S 38° 30' W	275'				
H	I	S 57° W	555'				
I	J	S 17° 30' W	102'				
J	K	S 33° 30' W	330'				
K	L	S 48° W	300'				
L	M	S 64° W	290'				
M	N	West	130'				
N	O	N 65° 30' W	304'				
O	P	S 70° 30' W	207'				
P	Q	S 56° 00' W	442'				
Q	R	S 36° 30' W	615'				
R	S	S 31° 30' W	200'				
S	T	S 36° 30' W	588'				
T	U	S 14° W	447'				

Gronmiller

2-11-140-29.

Sunday July 11th 1915.

Fair & warm.

Walter Kinkle arrives in camp
at 7 a.m. to take position as
axman.

Elmer Harst and I go to the
NW Cor. Sec. 11-140-29 and check
chain East on the North boundary
Sec. 11.

Ernest Tussler and Walter Kinkle
set a $2\frac{1}{4}$ " x 4' iron monument
at the following points.

① at Wit. Cor. to M.C. # 21.

② at the true $S\frac{1}{2}$ Cor. on
W. boundary Sec. 11-140-29.

Howmiller

(67)

85

2-11-140-29.

Monday July 12th 1915.

Fair & warm.

Hurst, Kinkle and I finish
check-chaining N. boundary Sec. 11.We then go to the true E $\frac{1}{4}$ 6 Cor.between Secs. 2-11 and starting
at this corner we run a ran-
dom South on $8^{\circ}30'$ Var.

@ 181.70 Hub.

@ 702.00 "

@ 1248.00 Intersect the
E & W random through about center
of N half Sec. 11, at chainage 4103.00
on that line.We now go to the true W $\frac{1}{4}$ 6 Cor.
on the north boundary Sec. 11.Starting at this point we chain S.
along random line which has been
run from this point. ($\gamma = 7^{\circ}15'$)

@ 539.00 Hub.

@ 870.00 "

@ 1277.80 "

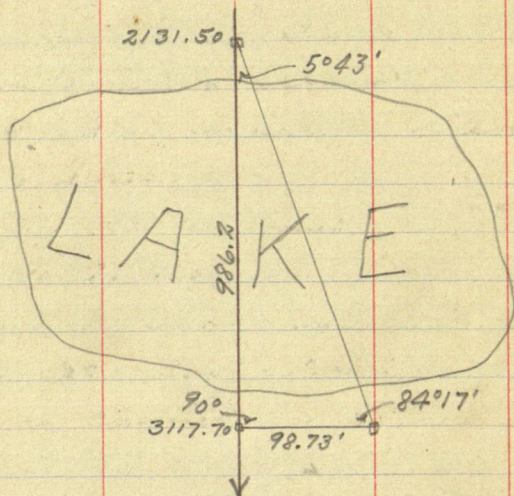
@ 1296.00 Intersect E & W
random line through about
Brownmiller

2-11-140-29.

center N half Sec. 11, at chainage
1346.50 on that line.

We now cont. cutting this line
south.

@ 2131.50 - Hub.



@ 3117.70 Hub.

Quit for night.

Tussler cooks and carries
iron corners.

Geownille?

(69)

87

2-11-140-29.

Tuesday July 13th 1915.

Fair warm.

Cont. South on random through
about center W $\frac{1}{2}$ Sec. 11.

@ 3159.30 - Hub.

@ 3585.80 - "

@ 3791.50 - "

@ 3937.00 - Intersect E+W
random through about center
S $\frac{1}{2}$ Sec. 11 @ chainage $\frac{1424.8}{1325.30}$
on that line.

@ 4036.20 - Hub.

@ 5050.30 - "

@ 5256.20 - The true W $\frac{1}{4}$ Sec.
cor. on the S. boundary Sec. 11
set 36.70' E at 90° from random.
correction = [.00698]

Groverville.

2-11-1440-29.

Wednesday July 14th 1915.

Cloud & wind.

Starting at the line $\frac{1}{4}$ Cor. on the
N. boundary Sec. 11 we run a
random South.

@ 501.40 - Hub.

@ 1271.80 - Intersect E & W
random through about center
N $\frac{1}{4}$ Sec. 11 @ chainage 2702.80
on that line.

@ 1383.40 - Hub.

@ 2156.20 - "

@ 2596.20 - Intersect E & W
random through about center
Sec. 11 at chainage 2695.20 on that
line.

Howmiller

(71)

89

2-11-140-29

Thursday July 15th 1915.

Fair warm.

Put in day with entire
crew setting and mounding
iron corners in Sec. 11.

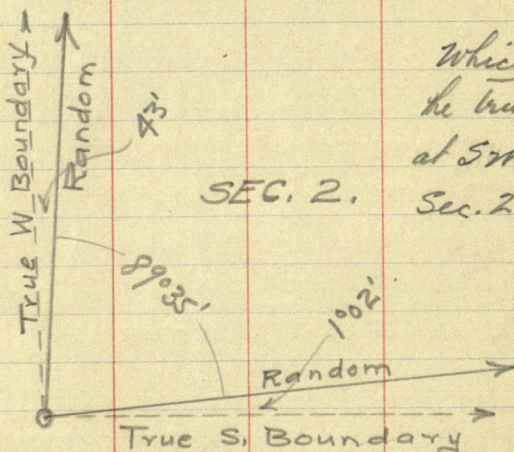
Goodmiller

2-11-146-29.

Friday July 16th 1915.

Fair & warm.

Spend morning Taking a few angles in Sec. 2 & 11. I find the angle at the SE Cor. Sec. 2 to be 90° even and the one at the SW Cor. to be $91^\circ 20'$



Which makes the true angle at SW Cor.

SEC. 2.

Sec. 2 - $91^\circ 20'$

Walter Kinkle goes home at noon today.

Elmer Horst, Ernest Tussler and

2-11-140-29-

I ride in to Hackensack in Spain's team.

Arrived there, I find Curo awaiting me and we go to trailer together. Spend remainder of afternoon, after arrival at trailer, in the office.

Supper, bed & breakfast @ Chase Hotel.

Krown Miller

2-11-140-29 - Checking -

Saturday July 17th 1915.
Fair & warm.

Curo decides to send me
back to Secs. 2 & 11, - 140-29,
to check certain lines.

Leave Walker on 9:28 Train
and go to Hackensack. Fare 33¢.
Take dinner at Spain's.

Ernest Tussler and I go
from Hackensack (Spain's Team)
to the North Star Camp, where
we will board while engaged
in checking. Arrive just
before supper.

Growmiller.

Time Sheet for Checking 2-11-140-29. July - 1915.

	Sun														
	17	18	19	20	21	22	23	24	25	26	27	28	29	30	31
Geo. W. Miller.	1	1	1	1	1	1	1	1	1	1	1	1	1	1	1
Ernest Tussler.	1/2	0	1	1	1	1	1	1	1/2	0	1	1	1	1	
John W. Curo.													1	1	1 No charge
Expense.	.33	0	0	0	0	0	0	0	.33	.33	.33	0	0		
Board @ North Star.	4	8	8	8	8	8	8	8	8	0	4	4	3		
	(11)	(11)	(2)	(2)	(4)	(4)	(11)	(11)	(2)	(11)	(2)	(1)	(1)	(1)	(2)

97
2-11-140-29- Checking-

Sunday July 18th 1915. Rain.

I put in day figuring
and making sketch.

Krowmiller

2-11-140-29 - Checking.

Tuesday July 19th 1915.

Fair & warm.

Check-chain N $\frac{1}{2}$ W line in Sec.

2. in morning.

Figure in afternoon.

Kronmiller

2-11-140-29 - Checking.

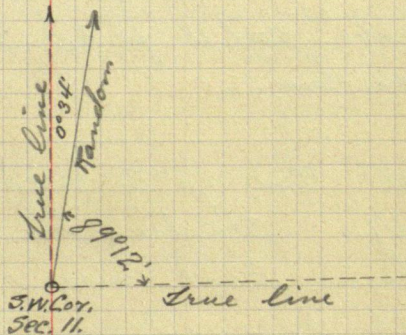
Tuesday Fair & warm.
July 20th.

Go out ¹⁹¹⁵ and check angle at SW Cor. Sec. 2. and find it to be correct as shown on page (72) 90 - This book.

I decide to phone to Curo, so I walk down to Rosenberg's place. Am unable to get him from there and walk back to the North Star Camp. Manage to get him on the phone and he tells me he will come out & go over this work personally—

Linsler & I then go to the SW Cor. of Sec. 11 and measure the angle there as follows:

which makes
the true angle
at SW Cor. Sec. 11
89° 46'



Kron Miller

2-11-140-29. Chicking.

Wednesday July 21st 1915.

Fair & warm.

Tussler ^{and} I go out and examine the tape very carefully. we compare each foot for length and carefully remove all kinks.

We then start at the iron N¹/₂W. cor. on E boundary Sec. 2, and chain west on random, using every means to obtain an accurate measurement, taking time ^{and} care in the use of plumb. bob.

@ 5477.00 the iron N¹/₂W. cor. on W. boundary Sec. 2 sets north 204.18 ft. @ 90° from random.

We then go to meander corner #67. Starting at this point we chain East very carefully, using all precautions to obtain a

Brownmiller

2-11-140-29-Checking¹⁰¹.

precise measurement

@ ^{3959.00}~~3961.00~~ the iron wit. Cor.
sets South

We then go back to the
North Star Camp & I put
in the remainder of the
evening figuring.

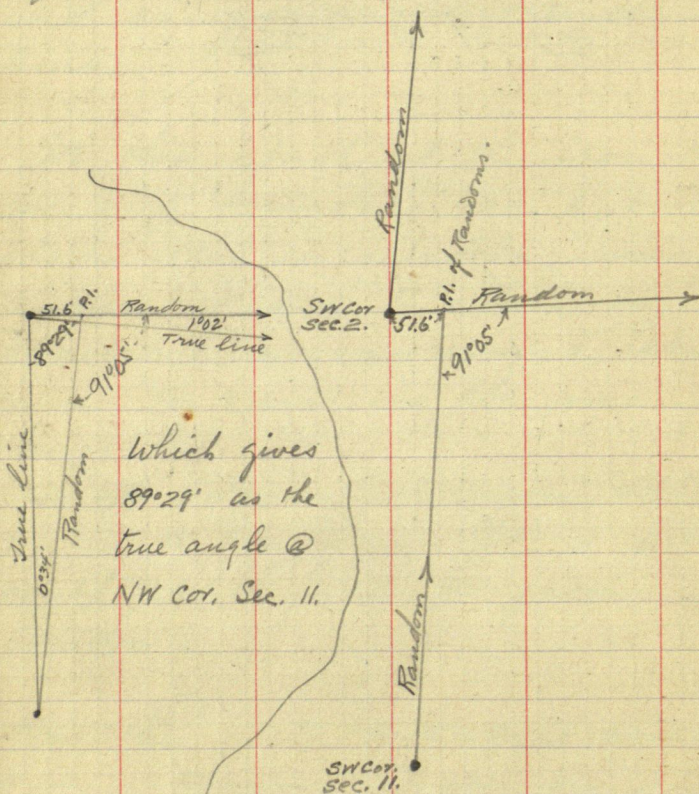
Groverville?

2-11-140-29. Checking.

Thursday July 22nd 1915.

Fair & warm.

We take the Transit & go to the
NW Cor. Sec. 11 and measure angle
as follows:

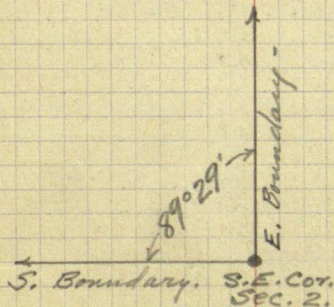


Gronmiller

2-11-140-29-Checking. 183

We then East on the North boundary of Sec. 11, checking Donner's triangulations and offsets as we go.

We now go to the iron $S\frac{1}{16}$ cor. between Sees. 1 and 2, set by Donner. This cor. should have been corrected 13.75' West from random. See P. (30) 49. Instead of this, we find the cor. setting 5.00' West of the random. We pull it up and set it in its correct place. We now set the transit over the iron SE cor. of Sec. 2, and sighting along the True South and East boundaries of Sec. 2, we measure the angle & find it to be $89^{\circ}29'$



We now go to the iron $S\frac{1}{16}$ Cor. on W. side Sec. 11, set by Donner. Starting at this point, we very
Geovonille

2-11-40-29. Checking-
carefully check chain East along
random. @ 1325.3 intersect W $\frac{1}{4}$ random.

@ 1875.50 - Hub on sand beach
of Woman Lake.

Donner's notes give this
distance as 1975.40

Grownmill?

2-11-140-29 - Checking.

Friday July 23rd 1915.

Rain all morning and we do not go out. I figure and make plat. Tussler grinds axes and scours chain.

P.M.

We go to the N^{1/2} line in Sec. 11 and check out the position of the corners along it & find them O. K.

We go to the N. boundary of Sec. 11 and set them over to their correct places, as given on plat.

Gronmiller

2-11-146-29-Checking.
 Saturday July 24th 1915.
 Fair & warm.

We stake out Harry La Vallis land in Sec. 11. His deed calls for a strip of land 330' wide, along the north side of the NE $\frac{1}{4}$ NE $\frac{1}{4}$ Sec. 11, leaving a 10' strip at the shore of Woman lake.

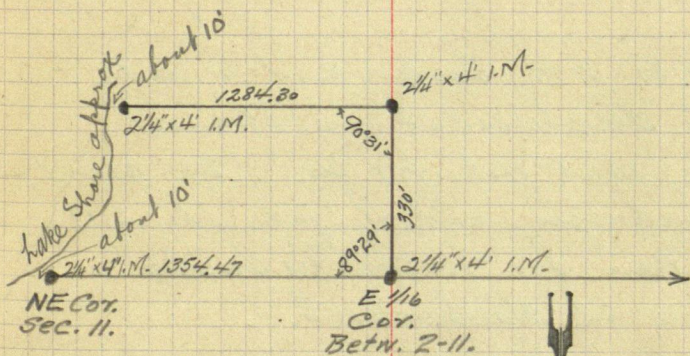
We connect over hub # 3788.30 on the random between Secs. 2nd & 11 to the true sec. line. We set up over the true E $\frac{1}{16}$ Cor. between 2 and 11, backsight on the connected hub just mentioned, plunge Telescope and turn $89^{\circ}29'$ Right.

@ 330' we set a $2\frac{1}{4}" \times 4'$ iron pipe for corner.

Setting up over this corner, we backsight on the true E $\frac{1}{16}$ Cor., turn $90^{\circ}31'$ Right and run East.

@ 1284.30' we set a
 Groton mill

2 1/4" x 4' iron pipe for corner.
 This corner sits about 10'
 from the top of bluff at shore
 of woman lake.



This sketch is
 backwards, up-
 side down ²⁾
 wrong side out.
 Otherwise it is
 O.K. G.W.M.

Grownville?

168

2-11-140-29 - Sheeking -
Sunday July 25th 1915.
Fair & warm.

Tusler and I go out and
check-chain the E. half
of the E & W 1/4 line in Sec. 2.

I spend the afternoon figuring.

At 10:30 P.M., Tusler and I ride
in to Hackensack in Spain's
buggy, sent out for us. We arrive
at midnight and I take the 2:19
a.m. train for Walker. ^{Fare} 33¢ Tusler
remains in Hackensack.

Howmiller.

Monday July 26th 1915.

Arrive in Wacker at 3:30 A.M.
and register at Hotel Chase.

Spend the day at the office.

I take the 12:37 P.M. train
to Hackensack, fare 33 cts.

Growmiller.

Tuesday July 27th 1915.

Arrive at Hackensack at 1:09 a.m. and put up at Spain's Hotel. Tusler and I drive out to Sec. 2 and 11 in Spain's buggy. We arrive at noon and take dinner at the North Star Camp.

We chain the $N\frac{1}{4}$ of the $N \times S\frac{1}{4}$ line in Sec. 2, making it 1452 ft.

We chain the $N\frac{1}{4}$ of the $E\frac{1}{16}$ line in Sec. 2, making it 1500 ft.

Tusler remains to mound canners and I return to Hackensack with Spain's buggy. Have supper at Spain's and catch freight to Walker. ^{Fare} 33 cts. Register at Hotel Chase.

Crow Miller.

Wednesday July 28th 1915.

All day in the office on
plat of Sec. 11.

Lusker at North Star Camp,
mounding corners in Secs.
2 and 11.

Grover Miller -

Thursday July 29th 1915.

all day at the office, on
plat of Sec. 11.

Tusler completes corner
monument in Sec. 2.

Curo works in office all
day on plat report of Sec 2.

Growmiller

Friday July 30th 1915

I work in the office all day on
plat & report of Sec 11-140-25.

Curo works in office all
day on plat & report of Sec. 2.

Growmiller

114

Saturday July 31st 1915.

Curio & I work in the office all
day on plat & report of Sec 2-140-29.

Growmiller

Monday July 31-1916

351

Curo and I get U.S. Notes and plats
(also Notes taken by F.A. Donner)
and ~~also~~ survey instruments
which I take with me to make
a survey of a Turp road in
Twp 136 Rge 29 ordered by the
Town Board of said Township
I take the 9:28 A.M. train at Walker
and go to Reguot P.R. Fare \$0.85 etc.
The Town Board has a car at the
Depot to take me to John Carson's
place (Port View Resort) where I board
while working for this town
P.M. I call Mr. Frank Meixell by phone
to find out where the road survey
is to begin he tells me, the pt.
of beginning is near the Rockypoint
Resort (some description) and thence
according to the direction of the land
owners, being along the W shore of
Gull Lake excepting several hundred
feet for lots. John C. Carson takes me
across Lake Margaret to the Peninsula
to look over the route for the road
We return at 6.00. E.B. Horst

135-29.

177

Tuesday ~~July~~ August 1st. 1916.

I call up Regent Depot to see if the Tripod for my transit has returned (it was carried past Regent by the ^{mor} Baggage) I order it sent to Niwaka on the morning train where Carson can get it by boat.

I take Carson's boat and row across Lake Margaret to hunt up corners set by F.A.

Corner at M.C. No 51 I find an I.M. and stumps of U.S. B.T.s

at cor to Secs 16-17-20-21 I find an I.M. set by Donner. I then walk N on route for New road to $\frac{1}{4}$ cor on E side of sec 16 also set by Donner

I return and walk S thru brush but soon get off the line as there is cutting and the line was never relocated.

I look for M.C. No 43. but find nothing as I may be off the line

I return to Carson's

E.B. Horst.

351

4250
3517

135-29.

Wed. Aug 2nd 1916.

Horst and John Carson with launch go to Miswa after the transit tripod

on return trip I have Carson take me to the road line in Sec 17 and E thru Sec 16 (run by Donner) as I am to connect the New road to this one.

P.M. Carson takes me to the Peninsula and goes home.

I go to W shore of Gull lake where I meet C.E. Anderson who takes me to M.C. No 45 where U.S. Notes call for W.P. 7 N 67 $\frac{1}{2}$ W 28.

N. Pine 16 S 10 W 18.

351.1

I find W. Pine snag 6 ft high washed out of place and setting loose on shore but plainly marked

The N. Pine is standing green and plainly marked from which I set a 3'x3'x3 ft J. Pine post 2 ft in ground at waters edge N 10° E 11.88 ft from N. Pine B.T.

E.B. Horst.

anderson & I walk W from this cor
to cor of secs 29-30-31-32 where
Notes Call for Jamck $7N55^{\circ}E12 = 7.92$ ft

Jam $5N47W11 = 7.26$ ft Jam $9S60W21 = 13.86$ ft
Jam $6S52E27 = 17.82$ ft

In Jamck swamp I find the old
U.S. Post still standing in the moss
and all the U.S. B.T.s dead but plainly
marked I leave outfit here and
return to lake Margaret where
Carson gets me with his launch.
E.B. Horst.

851

120

135-29

Thursday Aug-3-1916
Breakfast 6:30 A.M. Hot & Sultry
Horst transit John Carson etc
We cross Lake Margaret in
Carsons launch and walk to
Cor of Secs 29-30-31-32.

Where we set a 4"x4"x4 ft Tarnick
post for a temp corner, from the
four U.S. B.T.s all dead but standing
and plainly marked, all in Tarnick
we pull up old stake which is nearly
rotted of at top of ground and set New
post at same point

I do not mark any New bearing as **851**
the old trees are in good shape.

from tack in New post I start random
S boundary line of Sec 29 E at 8:30' or
we cut line E about 5 mile but
do not chain. work until 5:45 P.M.

Quit for night.

135-29.

Time Sheet. Survey of Peninsula Road, Twp road* *on W side of Grull Lake

E.B. Horst, July, 31-1916. one day J.C. Carson with launch 4 hrs.

August 1916

E.B. Horst.

John C. Carson.

Herbert Anderson.

L.K. Shalts

C.E. Anderson.

Clarence Chasch

20.

15 $\frac{1}{2}$ 12 $\frac{1}{2}$ 11 $\frac{1}{2}$ 9 $\frac{1}{2}$

3

{Carson's Launch
Figures denote trips
{across Lake Margaret}

Carson with launch one trip to Niwara Aug 2nd-2.00.

to Grull Lake

851.

121

Friday Aug 4-1916

Breakfast 6:15 A.M. Hot & Sultry
Hort. transit. John Carson & E
flag & Chain Herbert Anderson, etc.
We continue random sec line E
Anderson cuts brush and Carson & I
go W to cor of 29-30-31-32 and chain
line out aug 3rd

at	70.0	ft E	leave tangle summit
"	109.8	" "	set Hub
"	142.0	" "	ent tam 851 p
"	465.0	" "	leave tam swamp
"	479.5	" "	set Hub
"	582.5	" "	" "
"	1142.7	" "	" "
"	1215.0	" "	ent pond
"	1422.0	" "	leave "
"	1796.0	" "	set Hub
"	1983.0	" "	center of old N & S road
"	2089.2	" "	set Hub
"	2246.9	" "	" "
"	2378.0	" "	" on S.W.

Shore of Gull lake, U.S.M.C. No 45
sets S of random line $16^{\circ}21'$
distance = 104. ft

Sine = .28155. Cosine = .95956

over,

EP Hort.

Continued

at Sta 2477.8 ft E M.C. No. 45 sets S
of random line 29.3 ft.

U.S. Chain for this line = 2461.8 ft

one foot U.S. Chain = 1.0065 ft My chain
distance from M.C. 45 to $\frac{1}{4}$ cor = 178.2 ft U.S. Ch
" " " " " " " = 179.36 ft My chain

Correction for S boundary of Sec 29

= .011825 ft S for each foot E

at Hub 2378.0 ft E I set a Hub S of random
line 28.12 ft on true Sec line. I then
set transit on M.C. No. 45 back sight to
Hub 2378.0 on true line

as the water in lake is shallow at
ft for $\frac{1}{4}$ cor we chain E 179.36 from
M.C. and set an 8 ft N. Pine post in
lake on true line (with nail in top)

drive into ground and mound with stone
under water being true point for $\frac{1}{4}$ cor

I then take transit on hill S of lake
and S of $\frac{1}{4}$ cor in lake, and start random
N + S $\frac{1}{4}$ line S across see 32 ^{var 630} backsighting
on $\frac{1}{4}$ cor in lake. Chaining from $\frac{1}{4}$ cor
at 63 ft S leave lake

" 137.9 ft S set Hub in path and

" quit for night C.B. Horst.

Saturday Aug 5th 1916

Breakfast at 6:30 A.M. Hot & Cloudy
John Carson takes me across Lake
Margaret and returns home
Horst, transit. Herbert Anderson axe
flag and chain

We continue N + S $\frac{1}{4}$ line S **351**

at 301.3 ft S set hub on a line
cut out by landowners (Var = $9^{\circ}15'$)

I set transit over this hub backsight
Non random reverse telescope and
turn $2^{\circ}06'$ angle E into cut out line

$$2^{\circ}06' \left\{ \begin{array}{l} \text{Sine} = .03664 \times 301.3 = 11.0 \text{ ft} \\ \text{Cos} = .99933 \times 301.3 = 301.1 \text{ ft} \end{array} \right.$$

making hub 301.1 ft S of $\frac{1}{4}$ cor and
11.0 ft W

we cut small brush and hub
S. on out out line at about $\frac{1}{2}$ mile
S. enter heavy brush we cut about
500 ft S, begins to rain at 4:30 P.M.
quit for night

Row to carsons in a rowboat.

E.B. Horst.

135-29

125

Sunday, Aug. 6, 1914.

Hot and Sultry **851**

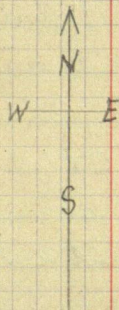
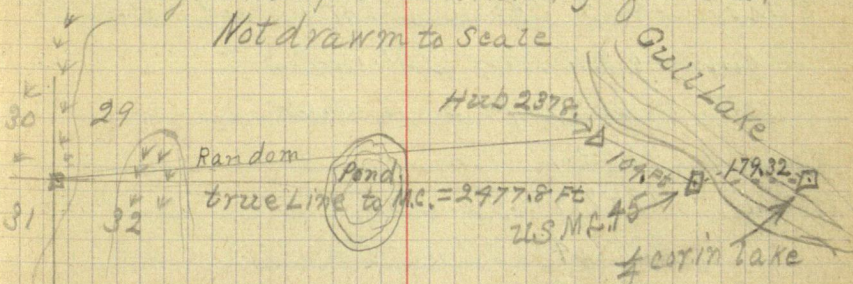
Stay at J.C. Garsons all day

E.B. Horst

135-29

Diagram of S Boundary of Sec 29.

Not drawn to scale



Monday Aug 7-1916

Breakfast at 6.30 A.M. Not no air moving.
Horst, transit and chain John Carson
are flag & chain

Herbert Anderson & L.K. Scholts specimen
Anderson and Scholts continue cutting
N+S $\frac{1}{4}$ line S thru See 32 and
Carson & O. chain what we cut Sat Aug 5.
beginning at Hub 301.1 ft S

at 685.6 ft S a Hub

3517

" 1393.7 " " " "

" 1952.5 " " " "

" 2351.4 " " " "

" 3133.8 " " " "

" 3382.9 " " " "

" 3667.7 " " " "

" 3899.5 " " " "

" 4324.6 " " " "

" 5280.9 " " set a Hub and look

for B.T.s to $\frac{1}{4}$ cor on S side of See 32

where U.S. Notes call for post and

W. Pine 35 N 2° W 48. = 31.68 ft

N. Pine 12 S 10° E 89. = 58.74 "

I find W. Pine B.T. uprooted and lying on
the ground dead. bearing the U.S. scribble
marks which have nearly all been
over

E.B. Horst.

Continued

8517

Chopped off by someone

I set transit at pt where the B.T. stood and turn required course, chain out 31.68 ft and set hub at point for $\frac{1}{4}$ cor. I set transit over this hub and turn course for the N. Pine B.T., chain out 58.74 ft and find old Norway stump and tree rotted flat. and check for course and distance

I pull up hub and set 3" x 3" x 4 ft Burr Oak post in its place for true $\frac{1}{4}$ cor from which
 W. Birch. 5 N 9°30' W 42.7 ft

Popple 7 S 19°30' E 60.3 ft

I set transit over hub 5280.9 on random line and sight N to hub on random reverse telescope and turn same to $\frac{1}{4}$ cor.

S.W. Angle = $61^{\circ}25'$ distance = 172.5 ft

$$61^{\circ}25' \begin{cases} \text{Sine} = .87951 \times 172.5 = 151.7 \text{ ft} \\ \text{Cosine} = .47588 \times 172.5 = 82.1 \text{ ft} \end{cases}$$

$\frac{1}{4}$ cor on S side of sec 32 at Sta 5363 ft

S sets 151.7 ft W of random line.

$\frac{1}{4}$ cor on N side sets 11 ft E of random.

$$151.7 + 11 \text{ ft} = 162.7 \text{ ft} \div 5363.0 \text{ ft} = .030337$$

ft W for each ft S. (minus 11 ft at each hub)

Quit for night

C.B. Horst.

Tuesday Aug 2 - 1916.

Breakfast at 6:45 A.M. Not + windy
Horst, transit. J.C. Carson flag + chain
Anderson and Scholts Apennin

at Hub 685.6 ft S on N+S $\frac{1}{4}$ line I set
a correction Hub 9.8 ft W on true N+S
 $\frac{1}{4}$ line; also at Sta 500 ft S set a Hub
4.17 ft W of random line and cut true
 $\frac{1}{4}$ line N to Gull lake

3517

at 80.8 ft S of $\frac{1}{4}$ cor in lake we set
a 4" x 4" x 3 ft N. Pine post for M.C. on
true N+S $\frac{1}{4}$ line (being 17 ft from
waters edge) from which

W. Birch 5 S 82° E 5.7 ft to tack.

N. Pine 7 S 74° 10' W 15.2 ft to tack

we return to Sta 664.2 ft S on true
N+S $\frac{1}{4}$ line and set a 4" x 4" x 3 ft Oak
post 2 ft in ground for beginning
point and E end of Trp road
and mark following bearings

W. Birch 6. N 59° 10' E 27.0 ft

Popple 4. N 22° 15' W 55.5 "

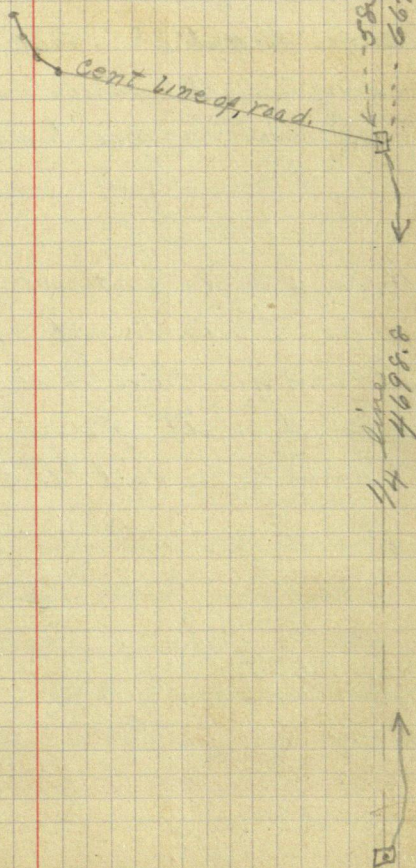
from this pt I sight N on true $\frac{1}{4}$ line
and turn W 51° 53' and run center
line of road W

Beginning point = Sta 0.00 being 583.4
ft S of Post set for M.C.

EB Horst.

135-29.

Sta 0.00 to Sta 1 = 750 ft 851 Right 5° .
 thence Right 5° 100 ft 2 Right 5° .
 " " R. 5° 100 ft 3 Right 20° .
 " " R. 20° 100 ft 4
 Quit for night. E.B. Horst.



130 135-29. Aug-9-1916
Wednesday warm

Breakfast 6:30 Horst, Transit and chain
with same crew. continue road line
around W side of Gull Lake

Thence Right 15° 100 ft **851.1**

" " 10° 242.5 ft "

" Left $22^{\circ}53'$ at 100 ft follow near
edge of swamp at 404.9 ft set Hub
at 978.0 ft set Hub = sta 7

Thence Right 6° 240.6 ft & thru lowlands.
Heavy timber and brush undergrowth
all day quit for night

E.B. Horst.

N.B. I call Euro by phone about some
notes that I need he says he is
coming down this way tomorrow
and will bring them to me
Charges for call. \$0.36 etc. E.B.H.

135-29

Thursday

131

Breakfast 6-30

Aug 10-1918

851

swamp

Horst transit + chain with same crew

Continued road line on Weide of Gull Lake

Thence Right $54^{\circ}30'$ --251.4 ft wet + soggythence Left $40^{\circ}10'$ --261.5 ft on highlandthence Right $150^{\circ}00'$ --69.3 ft enter lowlandthence Left $22^{\circ}48'$ --at 146 ft enter swamp

pretty wet, about 24 in deep, solid sand bottom.

at 455 leave swamp

at 552.4 ft set Hut (sta 12)

Thence Right 25° --583 ft and set Hut in field

about due west of W.H. Cobban's House

and about 150 ft distant (sta 13)

Quit for night

E.B. Horst

Curo came out at noon and brought

5 iron monuments along also

some field notes E.B.H.

This road was resurveyed between
the above points and slightChanges made. The resurvey
begins page 148 of this Book (66)

132

135-29

Friday

Aug 11-1916

Horst, transit + chain with
same crew continue road line
W of Gull Lake

Thence Right 10° (in field) 13

at 278.0 leave field

" 436.1 set hub

" 1056.2 " "

" 1388.6 " "

" 2116.6 " "

" 2715.1 " "

851.1

thru heavy Hardwood timber
and plenty of small brush
quit for night

EP Horst-

135-29.

Saturday

133

Aug 12-1916

Breakfast 7-a.m.

5.56° 10' W. 2152.	945.4	W.
S. 15° 52' W. 293.7	1198.2	80
S. 5° 52' W. 797.4	282.8	1787.4
	792.8	79.6
	3289.2	81.5 + 47
214.7	2640.0	
S. on this course	579.2	

99476 | 213.6 | 214.7
 198952
 146480
 99476
 476040
 397904
 721360
 696332

792.8
 579.2
 213.6

179.60
 123° 58'
 56° 10'

56° 10'
 53° 20'
 40° 18'
 15° 52'

135-29. Saturday
Aug 12-1916

133

Breakfast 7-am.

Rain

P.M.

Hors

77° 00'

123° 56'

56° 04'

71° 00'

123° 56'

90° 00'

33° 56'

56° 04'

85° 00'

135-29.

Saturday

133

Aug 12-1916

Breakfast 7-am.

Rain in AM. until 11 o'clock

P.M.

Horst, transit J.C. Carson flag & axe
S.K. Scholts & Herbert Anderson axe
we continue road line from Hut
2715.1 to 3264.8' and set Hut to which
I take following B.T.s

Maple 10 S 76° E 428 ft.

Maple 12 S 68° 15' W 34.3 ft.

at this Hut I turn Left 32°

Quit for night

C.B. Horst

8514

134

135-29

Sunday

Aug 13-1916

Horst at J. C. Carson's place
all day no field work
but check up some calculations
in forenoon

E. B. Horst.

851

135-29

Monday

135-

Aug 14-1916.

Horst, transit and chain John Carson
flag, eye and chain

S. R. Sholts and Herbert Anderson, eye
we continue road line around Gull
lake from sta 14 T.R.

at 749.0 ft set hub

" 1094.1 ft set hub

" 1305.0 " set hub Sta 15

351.7

thence right 10° 797.4 ft (sta 16)

thence " " $11^{\circ}18'$ 291.2 ft. (" 17)

thence " " $38^{\circ}37'$ to conform with
an angular bay in lake. (Sta. 18)

we cut about 200 ft & quit for night

E. B. Horst.

→ New B.T.s.

R.P.s. { R. Oak. $7^{\circ}58'120''$ E. 68.5 ft.
R. Oak. $10''$ S, $22^{\circ}20'$ E. 55.0 ft

135-29 Tuesday.

Aug. 15-1914.

Horst transit and chain

Clarence C Marsh flag + app
Herbert Anderson + S.K. Scholts
again continue road line

at 687.6 ft a Hub

" 971.7 " " **351.1**

" 1384.3 " " "

" 1653.3 " " "

" 2152.3 " to true sec line = 2155.0 ft Sta 19
" " " set on whatwas evidently an old compass
line run S from cor to sec 16-17

20-21 to M.C. No 43 on Gull lake

Road Thence Left $55^{\circ}54'$ and run N
at $7^{\circ}30'$ var on old lineI have Carson cut the brush out
of the old line S to Gull lakeI back sight S and set a Hub
(oak) on high bank at lake
we run N on old line

at 475.0 ft N set Hub

" 785.6 " " "

" 946.9 " " an I.M. at cor to
sections 16-17-20-21 sets on line

J.C. Carson comes to work at noon

Quit for night

C.B. Horst

135-29 Wednesday.
Aug 16-1916.

137

Horst, transit and chain

C.E. Marsh axe flag & chain

Herbert Anderson + L.K. S. ~~51~~ and

J.C. Carson axemen

Carson takes 6 I.M.s in boat and takes us to M.C. No. 51. Then he takes the Boat around into Gull lake on E side of sec 20 we walk E from M.C. 51 to cor of secs 16, 17, 20, 21. and set road centers from this cor N on true sec line between 16 & 17 setting correction hubs from Donners random sec line (Notes of which are on page 7 of this book)

Random being run from the N, and cor at S end sets 112.0 ft W of random distance across sec = 5272.2 ft

$112 \text{ ft} \div 5272.2 \text{ ft} = .0212245 \text{ ft W for each ft S}$

Hub 4244.2 ft S goes W 90.1 ft on true line

" 4021.4 " " " 85.4 ft. " " "

" 3807.9 " " " 80.8 " " " "

" 3424.0 " " " 72.6 " " " "

" 2945.3 " " " 62.5 " " " "

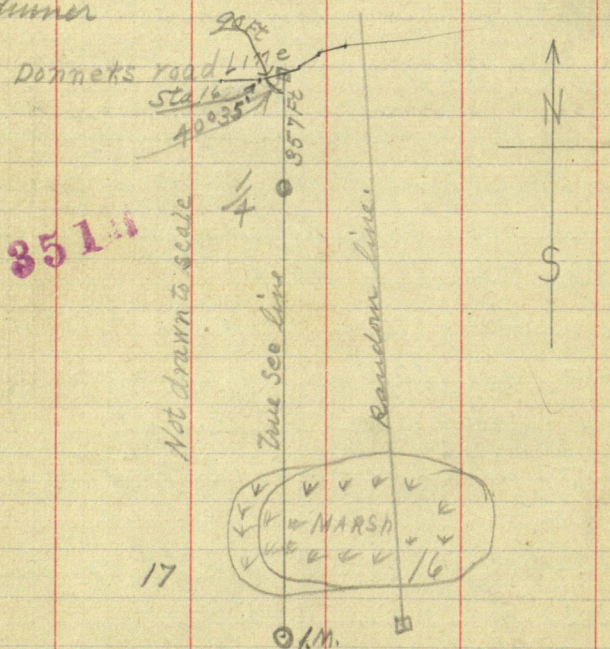
at 2636.1 " " $\frac{1}{4}$ cor sets W 56 ft " "

" 2275.1 " " " 48.3 ft on true line

(I.M. at $\frac{1}{4}$ cor set by F.A. Donner)

over. E.B.H.

connection Hub at 2275.1 ft S sets at
P.I. of E+W road line and Sec line between
16+17 being 357 ft N of $\frac{1}{4}$ cor. between
16+17 and 90.0 ft E of Sta 16 on road
line S.W. Angle = $40^{\circ}35'$. I drive a 4" x 4"
x 3 ft Popple Post 2 ft in ground at this point
we walk $\frac{3}{4}$ of a mile S to Gull Lake for
dinner



20

21

E.B. Hunt.

P.M.

I look for B.T. to M.C. No 43 where U.S.
 Notice Call for Post and following bearings
 N. Pine 20 N 17 E 35 = 23.10 ft **351**
 W. Oak 48 76 W 50. = 33.00 ft.

I find W. Oak snag lying down with B.T.
 plain the other marks scarcely visible
 I also find a Norway stump with an
 axe blaze but no scribe marks left, but
 am certain it was the U.S. B.T. it has rolled
 down the bank among the driftwood so I
 set the cor from the W. Oak. B.T. alone
 setting a W. Oak. post 4'x4'x3½ ft long 3 ft in
 ground on slope of high bank 12 ft N of water
 and mark New Bearings as follows

Red Oak 11 N 67°30' W 60 ft. S

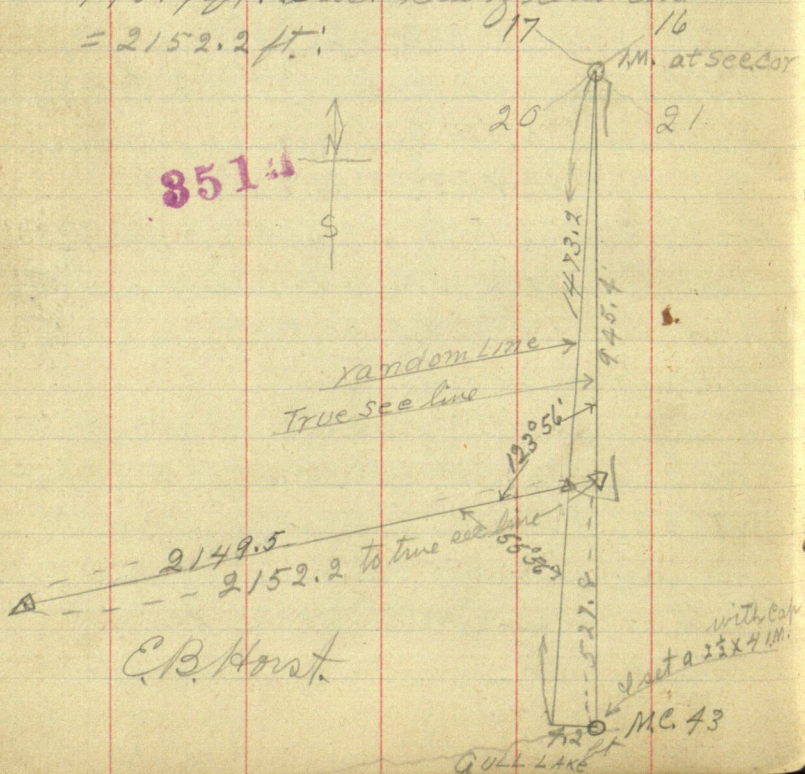
Double Red Oak 12 N 16° E 64.9 ft (Var 7°30'

I set Transit over Hub on random line
 and sight S to M.C. just set. missing cor
 4.20 ft on W side

I begin chaining at M.C. 43 and chain N
 on random line at 60.5 ft N a Hub
 at 526.3 ft N a Hub where road line run
 by me intersects random sec line between
 Cor of 16-17-20-21 and M.C. No. 43

from this Hub N to see cor = 946.9 ft.
 $946.9 + 526.3 = 1473.2$ ft. Only Chain,
 (U.S. Chain = 1471.80 ft.)

$4.20 \text{ ft} \div 1473.2 \text{ ft} = .00285$ Correction
 P.I. Hub of road line and random
 see line goes E 2.70 ft on true see
 line and N 1.5 ft in line with road
 center, making distance S to M.C. 43
 527.8 ft and distance N to see cor =
 945.4 ft. Last sta of road line
 $= 2152.2$ ft.



135-29 Thursday
Aug. 17. 1916

3514¹⁴¹

Horst transit & chain with same crew
go to S.W. cor of Sec. 20. and find a wood
post set by J.W. Curo. for true sec. cor. from
pulp stump $14 N 22^{\circ} E 93. = 61.35$ The roots
still remain in edge of a swamp

I set a 2 in x 4 ft R.R. flue for cor. from which
Jack pine. $9 N 19^{\circ} 40' E 87.8$ ft at $8^{\circ} 30'$ Var
Jack pine. $10 N 14^{\circ} 30' W 168.7$ ft

James post $S 45^{\circ} W 46.67$ ft

" " $S 45^{\circ} E 46.67$ ft

from this cor I run a line E Var $8^{\circ} 30'$ to
locate M.C. No 52 on E side of Lake Margaret
where U.S. Notice call for

N. Pine 28 $S 21^{\circ} E 12 = 79.2$ ft

N. Pine 12 $N 20^{\circ} E 22 = 14.52$ ft

we cross lake to where H. Anderson set a hub
on line and immediately find above ^{stump} B.T.
marks all gone on Norway 28 but Norway

12 bears B.T. plainly from which I set
a $2\frac{1}{2}$ in x 4 ft I.M. 3 ft in ground for true cor.
and mark new Bearings as follows

N. Pine 12 $S 25^{\circ} 30' E 57.9$ ft } $8^{\circ} 30'$ Var

N. Pine 4 $N 76^{\circ} 22' E 20.3$ ft }

I start line E from this cor at $8^{\circ} 30'$ Var and
run line across peninsula

over.
C.B. Horst.

at 60.4 ft E a Hub

" 377.7 " " " " I look for B.T.s to 4

Cor between sec 28 & 29 where Notes call for

Ironwood $8S45E16 = 105.6$ ft

" " $5N35E27 = 17.82$ ft

I find nothing but young ironwood here
and old ones rotted to a pulp. Can find
none that check with U.S. notes

Continue random line E

at 521.0 ft E P. Hutton N & S road line

" 783.5 " " " set Hub

" 991.2 " " " " and look for

B.T.s to Mc. No. 44 where U.S. Notes call for
Sugar $8N18W57 = 37.62$ ft

Butternut $5S37W77 = 50.82$ ft

I find snag of Sugar B.T. broken off
at ground 851.1 but still bearing scute marks
nothing left of butternut B.T. except some
rotten pulp and a little mound where
stump was torn up by the roots

I set $2\frac{1}{2}$ in x 4 ft capnet I.M. at pt for
cor with following B.T.s

Basswood $5S23^{\circ}30'W4$ ft.

W. Birch. $4N43^{\circ}E12.5$ ft.

over continued

C.P. Horst.

Set transit over Hub 991.2 ft E and
Continue random line E to M.C. 44.

at sta 1040.2 ft E set Hub M.C. sets S 35.6 ft
 $35.6 \text{ ft} \div 1040.2 \text{ ft} = .03384$. Correction

at Hub 521 ft E I set a Hub 17.6 ft S on
true sec line sighting to Hub on random
turn $88^{\circ}04' \text{ W}$ and set a Hub at intersection
of road line and true E + W sec line but 207.29
P.I. sets 511.6 ft E of M.C. 52 and sta 13+2349.3
ft on road line

setting transit over P.I. Hub I read S. Wangle
 $= 63^{\circ}53'$ I pull up P.I. Hub and set
a $1\frac{1}{4}$ in galv gas pipe 26 in long drive
20 in in ground, to mark intersection
pipe furnished by W.H. Cobb and **8514**
We walk S where Road line crosses

N sec line of sec 32 at 1900 ft E on random
line I set a Hub 22.47 ft S on true sec line
setting transit over this Hub I sight to Hub
on random and turn $90^{\circ}41' \text{ E}$ and set a
2 in x 4 ft boiler flue $3\frac{1}{2}$ ft in ground
at intersection of road line and true sec line
being at sta 3+50.3 ft on road line
and 1989.7 ft E on sec line. over

C. B. Horst.

we also set an I.M. 2 in boiler flue
at N.W. cor of sec 32 in place of tamper,
at $\frac{1}{4}$ cor on S side of sec 32 pull up
Oak post and set a 2 in by 4 ft
boiler flue 3 ft in ground and mound
same with large dirt mound
at beginning of road on N & S $\frac{1}{4}$ line
I pull up oak post and set in its place
a 1 in gas pipe 4 ft long 3 $\frac{1}{2}$ ft in ground
at M.C. No. 45 a 2 in x 4 ft boiler flue
3 ft in ground and mounded with a
stone mound 6 ft in diameter
on the way back to carsons I go to
M.C. No 43 and drive a 2 $\frac{1}{2}$ x 4 ft capped
I.M. and mound same
Note. Capped monuments furnished by
Homebrook Twp.

E.B. Horst.

851

Friday Aug 18th.

145

1916.

The Town board comes to J.C. Carsons place and cross Lake Margaret in Carsons launch to inspect road survey just completed by me.

They give the road survey the O.K. and meet at Jud Presslows place to allow the bills and transact other business. I present my bill for \$78.71 which is allowed + paid E.B. Horst.

8511

146

Saturday.
Aug. 19. 1916.

Return to Walker from
J. C. Carsons place
by boat from Carsons to Nisswa.
Nisswa to Walker R.R. fare .97 Cts

E. B. Host.

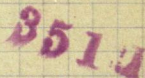
For survey of Sec 29 T135R 29. and
Survey of lots therein see Field Book
No 64.

For survey of Sec. 29 T. 135 R. 29, and
Survey of lots therein see Field Book
No. 64.

8511

147

17



28

33

see 29 T/35 Page 29
Friday June 1st 1917

a resurvey of a part of a
Trap road running thru sec
29 known as the Peninsula
road and setting I.M.s on
same.

Beginning at a point marked
station 7 on page 130 of
this book (No. 66) (being 9.8 ft
S of the $S\frac{1}{4}$ line of sec 29
and 189 ft W of the M.C. on $S\frac{1}{4}$ line)

From above point backsight
S to sta 6 then foresight N

Thence Right $6^{\circ}-260.6$ ft

Thence Right $50^{\circ}31'-251.4$ ft.

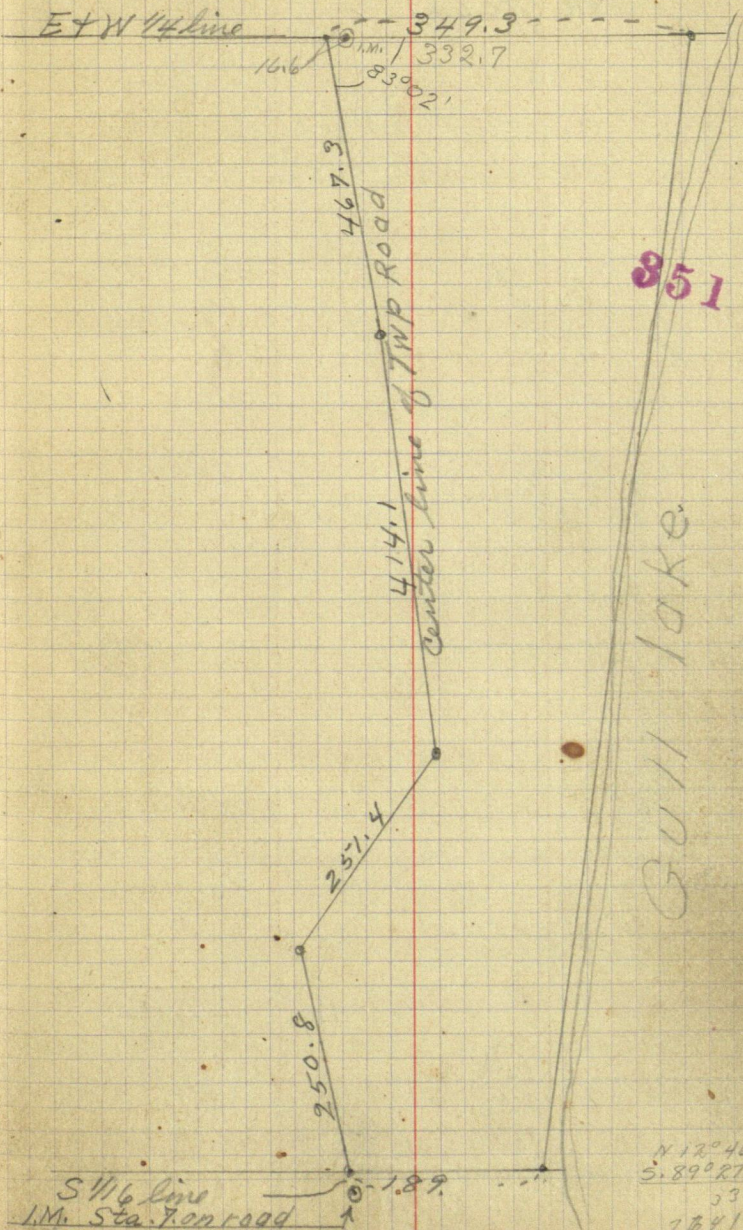
851 Thence Left $35^{\circ}28'-414.1$ ft.

Thence Left $8^{\circ}29'-467.3$ ft. to
E + $W\frac{1}{4}$ line and set a Hub

349.3 ft West of M.C. on Gull
Lake S.E. Angle = $83^{\circ}02'$

backsight S on road line
foresight N and turn.

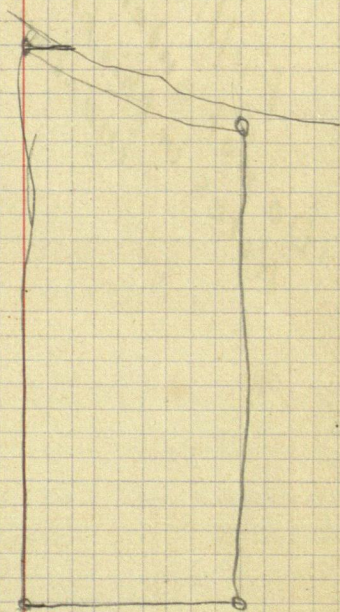
Right $24^{\circ}32'-607.2$ ft to a
point marked (sta 13) of this



158

book (No 66)

x



Full.
Do not enter any more
Notes in this book.
index book marked Full.

Sunday Aug 1-15

Copying field notes of

Sec 7-141-31.

Supplies from Buslers.

1/2 gal. butter

3 doz. eggs

1/2 lb. lard.

4 loaves bread.

Salt & pepper

1/2 gal. sugar.

cooking utensil -

good half bushel potatoes.

1 bunch onions @ 10

2149.5

2.8

2152.3

2155.0

2152.2

02.8

.0437

40

17480

2338.1
1.5
2336.6 out south 1'

Right 6° 260.6

" 50°30' 251.4

Left 35°29' 411.6

5.53
2.62
60.72

1478.2
527.8

94.54

24
54.17
135.897
45.6283
135.50.2
135.50.6
135.50.6

2336.60
1354.47
982.13

2336.60
1354.47
982.13

86 896
93 68
21 661
21 841
36 38
36 38

