

56

134-28-29

THE  
**ATLAS** SERIES

Number  
1001



Pocket Note Book

Jan 16-1922.

N 46 W 25830 134-28+29

Corfu point: 33870 W 8 Paces

Tel Pole 65140 E 23 1/2

Slake 80 Var

Babcock.

319



Jan 16-1921

Jan 16-1922

$S \frac{1}{16}$  lat:  $19+24+134-28829$

post:  $55 42^{\circ} W 9 = 27.00 \parallel$   
topo:  $73 15^{\circ} E 42 = 126. \parallel$

State  $8^{\circ}$  Var  
Babcock

327

Jan 16 - 1922

@ 358 Paces N part in well  
Cor to sec. 13-18-19-24 - 134-  
28+29

as there are no bearings farther  
North -

Post-3 N  $21^{\circ}$  E 10 Paces  
Post-4 N  $40^{\circ}$  W  $7\frac{1}{2}$  "  
Post-6 S  $64^{\circ}$  W 6 "  
Post-7  $82^{\circ}$  E  $16\frac{1}{2}$  "

Stake  $8^{\circ}$  Var  
Babcock.



Jan 16-1922

B<sup>1</sup>/<sub>6</sub> bel 13418 - 134-28+29

Oak 4 N 65° E 9 paces<sup>27</sup>  
J.P. 6 N 34 W 6 = 18.00

Port = Cor. 80 Var  
Babcock  
2x20 gals

327

Jan 16-1922

M.C. South side Long Lake  
bet sec 13-18 T134 R2829

Post 5N 30°W 5 Paus

Post 4S 35°E 6 ..

Post = M.C. Blazed E + W  
8° Var Bobcock.

319

Jan 16 - 1922

S $\frac{1}{2}$ 6 bd - 25+30 - 134 - 28+29

Port 2 N 89° W 2 Pace = 6.0 W  
port 10 S 2° E 3 - 9.00 W

Fine S + W.

spike N.W. cor fence post  
80 Var Bobwhite

327



Jan 16 - 1922

St. W. 31836-134-28+29

102 N 82° E 10 1/2 Pa  
101 1/2 S 52° W 8 1/2

2 N + S Road  
Line from E also w  
80 W ar  
Stat  
Babcock

2x2x20 stone

318

Jan 16 - 1922

N 1/2 bet 2 1+6-133-28829

AP 2 N 50° W 12 Paces = 36  
JP 5 S 50° E 8 " = 24

2 old Road N + S  
2 fences 1 Rod apart,  
spike 8° var  
Babcock

328

Jan 16-1922

N  $\frac{1}{6}$  bet 31+36 134-28+29

Tamprst: 5 S 74° W 6 Paces 18

Oak Pt: 3x5 S 59° E 11  $\frac{1}{2}$  34.5'

Stake 8° Var

Q N + S Road

L fence Runs E

Babcock

328



Jan 16-1922

1/4 bet 156133-28+29

JP 4S 3.5° W 5 1/2 Paces

Oak 2S 24° E 2 "

Fence N + S.

Spike 8° Var

Babcock

318

Jan 16 - 1922

S  $\frac{1}{16}$  Oct 186 - 133-29

J.P. Sub 6 S 71° W 3

F.P. H S 15° E 3

1  $\frac{1}{2}$  ft W of fence Running S  
spike 8° Var

Babcock

Jan 16 - 1922

N  $\frac{1}{16}$  sec 7412-133-28829

J.P. 4 N 71° 30' E  $1\frac{1}{2}$  Paces  
J.P. 6 N 50° W 10 "

blazed 5" J.P. = corner  
fence S & W

80 Var

Babcock

374



Jan 16 - 1921

1/16 7812 - 133 - 28829

Oak 2 S 17° W 22 Paces 66 W  
post - 6 S 7° E 5 = 15.0

Cor = 9" Cedar post - flayed  
NE + S W  
8° V or Babcock

238.

Jan 16-1922

M.C. North side Lake  
bet 7+12

JP 4N 2° E 7 Paas  
Oak 5N 37° W 17 "

MC = Oak post - Blazed  
NE & SW  
8° V or  
Babcock -

318

Jan 16-1922

M.C. south side Lake  
#13818-133-28829

J.P. 5 S 16° W 16 1/2 paces 49.5  
J.P. 7 S 45° E 9 " 27  
spike 80 var  
Bobcock

328



Jan 16 - 1922

N  $\frac{1}{2}$  bet 13+18 - 133 - 28+29

J.P. 7N 65° W 8  $\frac{1}{2}$  Pac

Pop 12 S 65° E 4  $\frac{1}{2}$  "

spite 8° Var

Bobcock

375

Jan 16 - 1922

3 1/6 bl/ 13 + 18 - 133 - 28 + 29

J.P. 1 1/2 N 57 E 5

J.P. 2 N 54 W 6

spite 80 yd ✓

318

Jan 16 - 1922

N 1/2 Sec 19 + 24 - 133 - 28 + 29

J.P. 2 S 48° W. 5 Paces = 15  
J.P. 5 S 76° E 13 = 39

spike

Q N of S Road

Fence runs E

80 Var

Babeuch

329



Jan 16-1922

M. C. North bank Miss  
River bet 14824 133-28+29

Elm 12 N 15° E 4 paces

Elm 16 N 36° W 3

Spite 8° Var

Babcock

318

Jan 17-1932

N  $\frac{1}{2}$  sec. 16x17 133-28

JP 5554° W  $1\frac{1}{2}$  Paces 4.50  $\frac{1}{16}$

JP 4572° E  $3\frac{1}{2}$  " 10.5  $\frac{1}{16}$

Stake 8' down

Barberch

326

Jan 17 - 1922

133-28

McC Right bank Miss River

Bit ~~17-18~~ 133-28

16-17

SP4 N 50° E 3

Oak 9 N 45° W 5

Makes 8° da

Fencing north  
Barrock

319



Jan 17-1922  
133-28

S  $\frac{1}{16}$  bet 8-9.

Cor fence post + N 89° W 3  
Jp 28 + 5° E 5

Line fence West  
State 8<sup>th</sup> or  
Babcock

Jan 17-1922

133.28

1/4 bet 8-9

gr 6 N 89° W 9 1/2 - 28.5  
Tel pale. 7 S 42° E 5 = 15.1/4

Nähe 8' von

Babcock

326

Jan 17-1922  
133-28

N  $\frac{1}{16}$  - 8-9

JP 3 N 62° E 1 Pace  
Port 5 N 89° W 2  $\frac{1}{2}$  "

Slake 8° or  
Babcock.

377



56

LEARNING  
TRANSFER BOOK

363

## Index

Page

- Horst on Twp road 140-28-1916. 1 to 22  
 Horst on Twp road 135-30-1916. 23 to  
 E.B. Horst. Sec-18-lot 3-134-29-P. 137  
 141-29-30. Curo. for Askins 44-93  
 135-136-29 " " Lundeen. 94-135  
 134-29 Survey For Rairdon By Horst 139-141.

Lundeen 94 To 135 Plats



140-28

268

Wednesday July-12-1916.

I copy notes and get plots  
and outfit ready to go to Swamp  
140-28. to survey a Swamp road  
running thru Sec. 19. (to be  
known as the  
working for Wabedo Swamp.

I take 12:47 AM. train at Walker  
for Pine River fare .67 cts  
I go to bed at Travelers Hotel  
E. B. Harst



Thursday July 12-1916

I pay hotel bill (75cts) and  
take Pine River, Longville Stage  
to Lyman Richardson's place  
where I board while working  
for Wabedo Lumber Fare \$1.75  
I arrive at 6.00 P.M.

E. B. Horst.

Friday July 14-1916.

Horst transit. Isaac Norman  
Chair, H.W. Moats and Emil Erickson  
we go to M.C. No 44 on N side of Emile  
lake where range line between Rgs  
28 & 29 intersects lake and find  
Norway Pine stumps plainly marked  
U.S. Note call for  
N.P. 20 N 60 W 10. and N.P. - N 80 E 16.

The stumps are a little out of place on  
bank of lake. we set cor post (wood)  
at pt for M.C. which falls in edge of  
water. I set a wood post for a wit  
cor to M.C. 9 Ft N of M.C. with New B.T. 2  
Oak 4 N 10 E 14.9 ft Popple 5 N 9 W 24.5 ft  
we begin at M.C. and run line Non  
graded road at  $8^{\circ}20'$  Var  
at 1200.0 ft N set 14 in road  
" 2050.0 " " " " road turns  
N.E. we cut line N thru brush  
about 2 miles and quit for night.

E.B. Horst.



140-28

268

4

Saturday - July 15 - 1916.

Horst and same crew continue  
line N along W side of See 19.  
and Chain N from Hub 2050 N  
at 2497.0 ft N set Hub

" 3306.6	"	"	"	"
" 3665.5	"	"	"	"
" 3903.1	"	"	"	"
" 4145.0	"	"	"	"
" 4672.6	"	"	"	"
" 5050.0	"	"	enter	sluic
" 5750.0	"	"	leave	sluic
" 5563.0	"	"	set	Hub
" 5760.0	"	"	enter	sluic
" 5800.0	"	"	leave	sluic
" 6326.6	"	"	set	Hub
" 6888.5	"	"	"	"
" 7360.0	"	"	enter	sinkhole
" 7590.0	"	"	leave	"
" 7611.0	"	"	set	Hub on seawall

on S shore of Woman Lake

Quit for night

E. B. Horst.



5

140-28 : 268

Sunday July 16-1916.

I can't get any men to  
work today so

I stay at L.C. Richardson's  
all day E.B. Horst.

Monday, July 17-1916.

Horst, transit. Jesse Norman <sup>and chain</sup> flag.  
James Douglass H.W. Moats and  
Ermit Brock appear

I start Douglass + H.W. Moats cutting a  
Random line E from sta 2503.4 N  
Stake Norman and Brock and go to  
Hub 76 11 ft N and look for N.W. Cor  
to See 19 on Rge line set by Curro  
from U.S.B.T.s Old B.T.s still standing  
we drive New Post and Mark new B.T.s

N Pine snag 28 N 60° 30' W 32.8 ft in See 13

W. Pine snag 24 N 60° E 53.5 ft in see 18

Maple " 10 N 79° 30' E 39.0 ft in " "

W. Pine snag 20 S 21° 30' E 53.2 ft in see 19

I set transit over Hub 76 11 ft N and  
turn S.E. angle to see cor. S.E. angle  
= 83° 37' distance = 118 ft

at sta 7598.0 ft N of M.C. No 44

N.W. Cor of See 19 sets E 117.3

We go S to sta 3050.7 ft N and set

$\frac{1}{4}$  Cor 77.97 ft E of Random line (Cor. E)  
(Correction = 015438)

with following bearing 99 ft. U.S. Chain = }  
Popple 6 S 39° W 63.2 ft. (96489. Ft. NY. chain.) }

W. pine stump - S 65° E 37.7 ft.  
E B Horst. over



7 268 140-28

July 17-1916 - Continued

we go S to sta 2503.4 ft N  
and set S.W. cor. to Sec 19  
3865 ft E of random line  
with following bearings

W. Birch  $9 N 39^{\circ} 30' E$  63.2 ft  
W. Pine stump  $S 28^{\circ} 30' W$  40.2 ft  
No other trees near

I start random S boundary line  
of sec E at 6° Var cut by woods and  
Douglas

at 694.8 ft E set Hub  
" 678.0 " " Pine River Longville road <sup>N.E.S.W.</sup>  
" 1160.0 " " Cross road again N.W.S.E.  
" 1225.0 " " " " " N.E.S.W.  
" 1430.9 " " set Hub  
" 1889.0 " " we are nearly at

Mule lake I turn  $60^{\circ}$  angle and  
run N.E. along shore of lake,  
Quit for night



Time Sheet for Survey of Richardson Turf road Sec 19.  
 July, 1916.

	12	13	14	15	16	17	18	19	20	21	22	23	24	25	26	27	28	29	30	31
E. B. Horst	1	1	1	0	1	1	1	1	1	1	1	0	1	1	1	1	1	1	1	1
Leaac Norman	1	1	0	1	1	1	1	1	1	1	1	0	1	1	1	1	1	1	1	1
Henry W. Meats	1	$\frac{1}{2}$	0	1	1	1						0								
Ernest Mork	1	$\frac{1}{2}$	0	0	1	$\frac{1}{2}$	1	$\frac{1}{2}$	1	$\frac{1}{2}$	1	0								
Joe Douglas				0	1	1	1	1	1	1	1	1	0							
Harold Sample				0		1	1	1	1	1	1	0								
Arthur Hyde				0		1	1	1	1	1	1	0								
				0																

268

268

8

9 268 140-28

Tuesday July 18/1916.

Forest. Transit. Harold Gamble  
flag & chain. Isaac Norman  
Jas Douglass Arthur Hyde specimen  
we continue line around Lake Mills  
at 123.2 NE set Hub

" 430.1 " " "

" 895.7 " " "

" 1327.5 " " " Turn  $43^{\circ}$  E

from line just cut and run line  
E along shore of lake

at 296.4 E set Hub

" 650.0 E edge of lake

" 850.0 " leave edge of lake

" 1196.0 " set Hub on Hill

" 1850.0 " enter field

" 1961.6 " set Hub

" 2490.3 " " end of line

I go S to Mc. No 46 where C. S. Notes  
call for Gamble ? N 29 E 28

By Gamble 9 N 37 W 17. we find old  
post and 2 Gamble stumps that  
check for course and distance but  
are badly burned also an old  
line tree - over.

C.B. Hunt.



I set New <sup>00</sup> post for M.C. with following  
bearings. Popple stump 6 N 3.5 ft  
W. Pine stump 10 N 45° E 9.3 ft  
N. " " 10 N 23° W 8.0 ft

Stake transit on top of hill back sight  
to M.C. and run line N at 8° 20' Var  
at 311.3 ft N set Hub

P.M. Emil Mork assists as flagman  
quit for night

E.B. Horat.



11. 268 140-28

Wednesday, July, 19, 1916.

Horst transit. Double flag & chain

Hyde. Douglas Norman a person

We continue E see line of sec 19

N from Hub 311.3 ft N

at 520.7 ft N intersect traverse  
line at sta 2440.7 ft E. S.W. angle  
=  $71^{\circ}45'$

" 647.0 ft N center of Pine River road

" 886.5 " " a Hub

" 1561.0 " " " "

" 1699.0 " " " "

" 1784.0 " " enter skew

" 1869.0 " " leave skew

" 2004.0 " " set Hub.

" 2433.0 " " " "

" 2480.0 " " " we find

U.S. B.T. N. Pine. 28 S 70 E 6, from  
which we set New cor Post and  
remark old B.T. stump. The other  
B.T. was dug out in building a  
log road.

at sta 2480 ft N  $\frac{1}{4}$  cor sets E 8 ft

\*

E.B. Horst.

140-28

268

12

Thursday July 20 1916.

Hurst and same crew

at Hub 2480. ft Non random line

Sight S and turn S.W. Angle

74°20' and cut random E &amp; W line

at 8 ft W of  $\frac{1}{4}$  cor a Hub.

" 165 ft W a hub at foot of hill

" 521.7 ft W a Hub on top of hill

" 994.0 " " " "

" 1616.5 " " " "

" 2311.3 " " " "

" 2742.5 " " " "

" 3219.6 " " " "

" 3982.0 " " " "

" 4815.0 " " " "

" 4965.0 " " " "  $\frac{1}{4}$  Cor on W side

af see 19 (set by Hurst) sets N 12.0 ft

Cor = .003226

Emil Mock comes to help us at 9-30.

E. B. Hurst.



Friday July 21. 1916.

Horst. Transit. Harold Sample Flag  
& Chain. Cassie Korman Arthur  
Hyde Gas Douglas Appear  
at sta 2684.6 It W on E+W  $\frac{1}{4}$  random  
line we set a hut. I set transit  
over hut and sight E and turn  
NE. angle  $74^{\circ}20'$  and run random  
N  $\frac{1}{4}$  S  $\frac{1}{4}$  line N to locate  $\frac{1}{4}$  on N side of  
sec 19. we cut line N  $\frac{1}{2}$  mile and  
look for U.S. B.T. Notes call for  
W. Pine 30 S  $20^{\circ}$  E 55. and

" " 20 N  $15^{\circ}$  W 28. we find  
W. Pine 30 stump laying on ground  
and badly burned. I set cor from  
this stump measuring as near as  
we can tell from the original  
position of the stump & roots of same  
and mark New Bearings as follows  
Basswood 16 N  $71^{\circ}$  W 53.8 ft.  
W. Oak 4 S  $73^{\circ}30'$  W 34.3 ft.

Take transit on random line and  
set a hut on random line at a  $90^{\circ}$   
angle from  $\frac{1}{4}$  cor. Cor sets 100.5 ft  
E of random we begin chaining at  
EB Horst.



July 21st continued  
this Hub using it as Sta 0.00 S  
at 115.5 ft S a Hub.

" 728.7 " " " "

" 1049.8 " " " "

" 1635.0 " " " "

" 2156.5 " " " "

" 2365.0 " " " "

" 2522.4 " " " " on E & W line

I set transit over this Hub and  
backsight N on line first run and  
run line S to  $\frac{1}{4}$  cor on S. side Rec 19  
at 3052.6 ft S set Hub

" 3744.5 " " " "

" 4000.0 " " enter sewer

" 4185.0 " " leave "

" 4284.5 " " N end of barn on line

" 4310.5 " " spike on top of barn

" 4316.8 " " S end of barn

" 4397.8 " " set Hub

" 4727.0 " " center of Pine River road

" 4911.3 " " set Hub

" 5108.0 " " an old stake on line

evidently the point where the U.S.  
Cor had been

Gut for night  
E.B. Horst.

15

268

140-28.

Saturday July 22-1916

Hosst. Transit. Moore Norman  
and Jas Douglass afternoonWe look for U.S. B.T. at  $\frac{1}{4}$  cor on  
S side of Sec 19 where Notes call for

W. Pine 16 N 10 E 18 or 78

W. Pine 20 S 30 W 21.

we find S.W. stump badly burned  
and N.E. stump completely rotted  
but checks with Notes at 78 links  
the old stake we found being at pt  
called for. I set New post and  
mark new Bearings

Basswood 18 N 52° E 56.2 ft.

Oak 10 S 41° E 30.7 ft.

I take crew W to S.W. cor of sec 19  
and turn 13° 52' angle N of random  
run E before from this cor

at 200.4 ft E Hub

" 675.0 " " "

" 1020.0 " " enter swamp

" 1240.0 " " leave " "

" 1542.6 " " set Hub

" 1873.0 " " Cent of Pine River road

" 1904.7 " " set Hub.

" 2293.0 " " cross 60° angle line



140.28

268

16

July 22. 1916 Continued.

" 2370.7 ft cor S side of See 19

" 2667.0 ft E Set Wit. Cor. to M.C. No. 46.  
with following bearings

Burr Oak 5 S 24 W. 41.9 ft.

" " 5 N 84 W. 25.6 ft.

at 2683.0 ft E Waters edge W bank  
of Mule Lake.

Quit for night

E. B. Horst.

July 23. 1916. Sunday

No work

all day at L. C. Richardson's.



17 - 268

140-28.

Monday July 24, 1916.

Horst transit. Isaac Norman etc.  
 \* we set S to cor at sta. 3813 ft S  
 on N+S  $\frac{1}{4}$  line with following  
 bearings W. Pine. stub 18 N 43 E 54.2 ft  
 W. Birch. 5 N 71 W 53.0 ft. (\* see bottom note)  
 I backsight from cor to put on random  
 line and turn angle 15° 17' N and cut  
 S to E from N+S  $\frac{1}{4}$  line to E Sec line  
 we return to place of beginning and  
 chain line just cut.

at 321.9 ft E set Hub

" 585.0 " " enter meadow

" 825.0 " " leave " "

" 1179.6 " " set Hub

" 1300.0 " " out meadow

" 1600.0 " " leave " "

" 1750.0 enter meadow

" 1850.0 leave " "

" 1972.1 ft E set Hub.

" 2647.1 " " " P.I. Hub on

E. Sec line at sta 1163.0 ft N

My chain between M.C. No. 46. and

$\frac{1}{4}$  cor on E side of Sec 19 = 2480 ft

U.S. Chain = 2508 ft

ERB Horst

140-28 268

18

Monday July 24 1916 cont'd

1 foot my chain = .9888 ft U.S. Chain  
Correction E per foot on this line =

.003225

St $\frac{1}{6}$  cor on E Boundary of Sec 19-140-28  
at sta 1174.8 ft N of M.E. No 46 goes  
E 3.8 ft we set post for cor with  
following bearings

W. Birch 16 S.E. 68.0 ft.

W. Pine 16 S.W. 279.0 ft.

from St $\frac{1}{6}$  on N + S  $\frac{1}{4}$  line to St $\frac{1}{6}$  on  
E sec line = 2650.9 ft

Quit for night.

E. B. Horst.

From preceding page

\* St $\frac{1}{6}$  cor on N + S  $\frac{1}{4}$  line at sta 3813. ft S  
and 24.9 ft E of random line (on true N + S  $\frac{1}{4}$  line)



19

140-28.

7268

Tuesday, July 25, 1916.

Horst, Grandt, and Isaac Norman  
setting corners and road centers  
Correction for  $N+S\frac{1}{2}$  line = .01967 ft F.  
for each foot ~~S~~ N.

Correction for  $E+W\frac{1}{2}$  line = .003226  
ft N for each foot W - 4 ft at Hut  
to be corrected

Corner at center of Sec 19 goes  
E from P.I. Hut on  $\frac{1}{2}$  random lines  
49.9 ft and N 4.66 ft.

Set Post at this pt with New B.t.s.  
Popple 4 SE. 14.7 ft

Popple 4 NE. 58.6 ft

we go to  $S\frac{1}{6}$  line running E from  
 $N+S\frac{1}{2}$  line and set road centers

at correction = .00264 ft N per ft E  
at Hut 321.1 road center goes N. 86 ft

" " 1179.6 " " " N 3.1 ft

" " 1972.1 " " " N 5.2 ft

This completes the field work of  
this survey. raining slowly  
all day

E.B. Horst.





21

268

140-28

Wednesday, July 26, 1916.

I get outfit ready to return  
to Walker via Longville stage  
to Pine river

Dinner at Pontoria \$0.35

Stage fare to Pine River 2.00

R.R. fare Pine River to Walker 0.67

arrive at Walker 5.00 P.M.

E. B. Horst.



23

135-30

Tuesday. Oct. 31-1916.

815

Ed B. Horst working for  
Home Brook Twp (135-30)  
prepares Notes and Plates and  
takes survey outfit and  
leaves Walker for Peguot  
on 9-28 train fare \$0.85  
Call Frank Meisell at 7:45  
A.M. from Walker charges 40 cts  
I arrive at Peguot 11-28 and  
get dinner at Anderson  
Hotel \$0.35.

P.M. Ray Anderson with his  
ford takes me and outfit to William  
Guida's farm in SE. 1/4 SE. sec 1 T  
135 R 30 where I board while surveying  
a road between sec 1 & 12 being to  
straighten an old road by petition  
Guida & Horst take chain and notes  
and go to cord of sec 1 & 12 135-30. and  
sec 4 & 7-135-29 where notes call for  
Post & following B.T. as.

Aspen 10 S 78° W 27 = 17.92 ft.

Aspen 10 N 36° 30' W 31 = 20.46 ft.

Aspen 9 N 11° 30' E 37 = 24.42 ft.

815



Oct. 31-1916.

315

24

all are gone and as the road has been graded wide enough to take in all the stumps, we find no stumps either. We find a stone set by Hallet in center of road set years ago.

We walk N  $\frac{1}{2}$  mile, every thing has been cleared away here and we go

N to cor of Tracts 135 and 136. Pages 29 and 30 where Notes call for Post & B.T.s

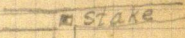
Aspen 14 N 39 W 38 = 25.08 ft

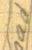
Aspen 12 N 40 E 38 = 25.08 "

Aspen 12 S 40 E 38 = 25.08 "

Aspen 10 S 75 W 30 = 19.80 "

We find all timber gone we also find a 2x4 stake in center of road

we chain required distance 

and find roots (not traversed) 

of old B.T.s on required courses excepting the N.E. B.T. which falls in road this with the settler's evidence

I consider sufficient evidence to make corner valid

Guilt for night.

O. H. Frost.

315

25 315

135-30. Two road

Wednesday November 1st 1916  
 Horst transit & chain with  
 Gurlay Transit & 300 ft steel tape  
 and Will Gnida and J. B. Meyell  
 Chain J. E. Goble & C. L. Maine  
 apemen walk to cor of sec 1-2-  
 11 & 12 where Notes call for P&T B.T.

B. Oak. 14 N 28 W. 44 = 29.04 ft

B. Oak. 12 N 21 E. 23 = 15.18 ft

B. Oak. 8 S 38 W 48 = 31.68 ft

W. Birch. 8 S 71 E 37 = 24.42 ft

Rasmus Johnson shows us a  
 stone he has buried to preserve  
 the point where he knows the  
 old U.S. sec cor stood. I set  
 transit over stone and find roots  
 and stumps of all trees called for  
 in notes which check perfectly with  
 U.S. notes I use the stone for cor and  
 take following bearings

Popple 5 N 33°30' E 53.2 ft

W. Pine stump N 53°35' W 74.1 ft

Popple 6 S 57°10' W 51.7 ft

Birch 4 S 38°30' E 45.1 ft.

from this cor we run E (at 8' 15" var.)

315

E. B. Horst.



at 413.6 E set Hub.

" 568.0 " enter swamp

" 710.0 " leave " "

" 1312.1 " set Hub.

" 1334.5 " wire fence.

" 2328.8 " set Hub.

" 2574.0 " enter swamp

" 2634.0 " leave " "

" 2700.0 " set Hub. and look for 4

Cor between secs 1 and 12 where Govt Notes

Call for Post and following bearings

Open 3 N 17° W 28. = 18.48 ft.

Spruce 6 S 28° E 53. = 34.98 ft. all gone we

Continue E

Fence

at 3098.6 ft E set Hub. Cross E-W fence

" 4812.2 ft E set Hub. in S.W. wheel track of  
old logging grade S.W. angle of log grade  
to line = 10° 15'

at 5293.3 E set Hub. W of N+S road } on

" 5304.7 E set Hub. E of N+S road } range  
line

a stone corner at Sta 5294.0 ft E sets  
S 48.4 ft

the settlers here claim they have  
known this cor. for 22 years and bearing  
trees were here ten years ago as a

El. 3140 ft. 815



27

315

135-30

Nov 1-1916

Check I decide to run N + S on range  
line before using this cor.

We walk S to cor of sec 7-12-13-18  
where Z.S. Notes call for Post and B.T.

Birch.  $8 N 59^{\circ} 30' E 26 = 17.16$

Birch.  $18 N 35^{\circ} W 6 = 3.96$

Birch  $8 S 33^{\circ} W 12 = 7.92$

Aspen  $10 S 54^{\circ} 30' E 56 = 36.96$

I find stumps of all 4 B.T.s also  
an old square stake the stumps.

Check line for course and distance.

I drive an Iron Monument  $2\frac{1}{2} \times 4$  ft

Capd on top for cor and as all  
timber is dead and small I bury

4 stone for Bearings

one N.E. 46.7 ft.

" N.W. 46.7 ft.

" S.W. 46.7 ft.

" S.E. 46.7 ft.

we start line N from center of I.M.

var  $8^{\circ} 10'$

at 994.4 ft I set out in lumbered road

Quit for Night  
O.B. Horst

315

Thursday, Nov. 2-1916-

Forest Transit and chain

Cable and Guide chaining

O.L. Haine axe &amp; flag. Continue Nor-

Range line between sees 7 &amp; 12

at 2649.6 ft N set Hub a stone then

set by Hallet sets E 3.6 ft

at 13923.8 ft N set Hub.

⑧ " 5297.0 " " set Hub on random

line run E between sees 1 and 12

S.W. angle of random line =  $95^{\circ}00'$ 

⑨ at sta 5248.6 N a stone set by Hallet

sets E 6.6 ft This being the cor recognized

by the old settlers for 22 years as the

cor to sees 1 and 12 T135-30 and see band 7

T135-29 I accept this as the true cor

from settler evidence being in the center

of a N &amp; S graded road established 18 yrs

and S of logging grade running E &amp; W

cor sets S of grade 140 ft.

from cor to 1-6-7-12 we run E at  $7^{\circ}45'$ 

var, then field at 942 have field

at 1045.2 ft E set Hub in center of graded E

& W road N.W. angle to grade =  $21^{\circ}$ 

at 2230.7 ft E set Hub

" 2951.0 " " " "



298151

135-30

Nov. 2-1916

at 5089.0 ft E set Hub on S side  
of E & W road and in center of road  
running S to Portview school  
at this point I find 2 standing  
Jack pine bearing trees and a stump  
of a 10 in tree all marked with  
timber scribe but so I have no  
notes for sees 5-6-7-8 T135-R29  
I don't know if they are C.S.B.T.s.  
I take courses of trees from Hub 5089.0  
we return to Hub 1045.2 E of Kge line  
and run course of old log grade  
sighting N on random line & turn Right  
21° and run 660 ft N.W. (P.S. of curve)  
thence Left 30° 9' 15" ft (rough chain)  
to where random line between sees  
1-12 crosses log grade at sta 4812.2E  
We begin at Stone cor to sees  
1-6-7-12 Gable and Guide  
Chain. I set large flag at cor  
and take transit N on high point  
and set it on line between  
S.E. and N.E. cor of sec 1- T.135-30  
at 140 ft N center of logging grade  
quit for night E.B. Hunt.

315



135-30

30

Friday Nov 3-1916

315

Forest, transit and chain.  
with same crew Continue N between  
secs 1+6 T135 Rge 29+30

Having set large sights at S.E. and  
N.E. Cor of sec 1 I set transit at  
sta 2700 N where I can see both  
see corners I shift transit one line  
and chain balance of mile distance  
= 5315 ft., at sta 2657.5 ft N we  
set a 2x48 in I.M. (Boilerplate) for  
true  $\frac{1}{4}$  cor between secs 1 and 6 on  
graded road and Range line.

One walk N on road to cor of Twp's  
135 and 136 Range 29 and 30.

and pull up 2x4 stake and set in  
its place a 2x48 in capped I.M.  
to which I set 4 stone for bear-  
ings N.E. 46.7 ft.

N.W. 46.7 ft.

S.W. 46.7 ft.

S.E. 46.7 ft.

I receive U.S. Notes from Euro and  
go to cor of 5-6-7-8 T135-Rge 29  
where U.S. Notes call for post and  
following bearing trees

C/B Forest 315

31.

135-29-30

815

Nov - 3 - 1916

<sup>Boiler</sup> Jack Pine<sup>8</sup> N 61° W 359 = 236.94 ft.

Aspen 6545½ W 289 = 190.74 ft.

we find N.W. B.T. broken off at stump and lying on ground bearing all the scribe marks plainly we also find stump of a popple burned off at ground but checks for course and distance with N.W. B.T.

from there I set a 2x48 inch I.M. (Boiler pine) at point for true cor to 5-6-7-8 - 135-29. { New B.T. on page 34  
at sta 5087 ft E on random line run yesterday between secs 6 and 7 true corner sets S. 05. of a foot. No correction

U.S. Chain = 5082 ft

Our Chain = 5087 ft

Correction E = .00098386 per ft.

at sta 2444.40 ft E we set a 2½ by 48 in I.M. (boiler pine) for ¼ Cor between secs 6 and 7 we walk W to stone cor set by Hallet to secs 1-6-7-12 135-29-30 and set a 2½ x 48 in Capped I.M.

815

C.B. Horst.



Time sheet. Trip roads in 135 Rps 30429

Month	Day	Person	Hours	Rps	Total	Notes
October 1916	31	November	1	23	456	784910
	1	E.B.H.	1	1		4 days
	1/2	W.G.	1	1		3 days
		J.G.	1	1		3 da
		E.O.M.	1	1		3 da
		J.F.M.	1	00		1 da

J.F. Meixell Chairman } Trp Board.  
 Wm Guida }  
 Chas. Korthals }  
 Jud Bressler Clerk.  
 E.J. Wheeler Treasurer.



Nov 3-1916

in place of stone, with following  
bearings stone (buried) N.E. 46.7 ft  
stone (buried) N.W. 46.7 ft.

Correction for mile between sees  
1 and 12 =  $48.4 \div 5294 = .0091424$  of a  
foot S for each foot E

Hub 4812.2 E goes S 44.00 ft

Hub 3098.6 E " S 28.33 ft

$\frac{1}{4}$  cor at 2647.0 E " S 24.20 ft

where we set a  $2 \times 48$  in I.M. (Boiler  
flue) continue W

Hub 2328.8 E goes S 21.29 ft

at the request of Rastus Johnson

I set a  $1\frac{1}{2} \times 36$  in gas pipe at sta  
1323.50 ft E and S. 12.10 ft for W  $\frac{1}{2}$  cor

Hub 413.6 E goes S 3.78 ft.

at cor to sees 1-2-11-12 I dig up  
stone set by Mr Johnson and  
set in its place a  $2 \times 48$  in I.M.  
we walk to stone  $\frac{1}{4}$  cor set by  
Hallett between sees 7 and 12

and set in its place a  $2 \times 48$  in I.M.  
For trip 1/2 which may not be correct.  
which concludes the survey.

135-29430

315

34

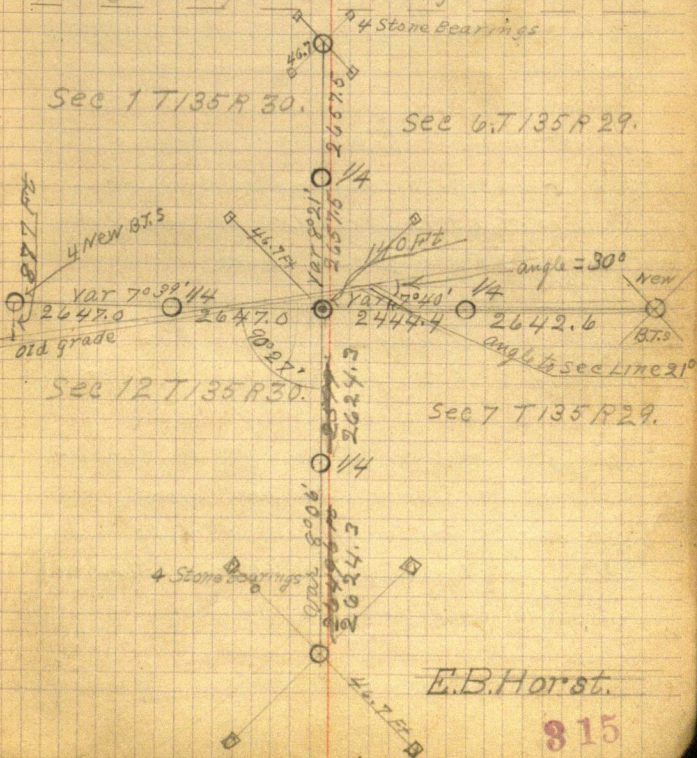
New B.T.s to cor of Sec 5-6-7-8  
T135 R29 from page 31 (this book)  
Jack pine 12 N 1650' E 38.2 ft.

" " 12 N 48° W 67.1 ft.

" " stump S 27° 05' W 33.2 ft

" " 10 S 60° E 28.7 ft.

Diagram of this survey



315



Saturday November 4th 1916.

E.B. Horst working for E.J. Wheeler  
begins survey in sec 12 to locate  
center of sec and boundary lines  
of NE  $\frac{1}{4}$  of sec 12. 135-30

Horst transit and chain with  
Gurley transit and 300 ft steel  
tape and Wm Guida chain and  
ape, Clarence Wheeler ape and flag  
Earnest Tuttle show us about  
where the  $\frac{1}{4}$  post between sec  
12 and 13 used to stand, where  
U.S. Notes call for post and B.T.

Oak 8 N  $22^{\circ}$  E 27. = 17.82 ft

Oak 16 S  $50^{\circ}$  E 3. = 1.98 ft

I find an Oak scarred on S.W. side  
and after cutting to bottom of scar  
I find old scribe marks this being  
the N.E. B.T. I also find a large Oak  
stump burned <sup>off</sup> the ground which  
checks with N.E. B.T. for course but  
is 8.4 ft away instead of 1.98 as  
called for. I set a 2x4 8 in I.M. from  
N.E. B.T. after chaining W from S.E.  
cor of sec 12 to this point to make  
sure this is the correct place for  
E.B. Horst.



See 12-135-30

315

36

Saturday Nov-4-1916.

Corner, distance = 2626.6 ft.

Start line N thru center of See 12 at  $80^{\circ}18'$  Var.

at 419.8 ft N set Hub

" 1638.5 " " " Hub

" 2646.0 " " Cross wire fence

" 2650.0 " " set Hub

" 3143.5 " " " "

" 4369.4 " " " "

" 4915.0 " " " " in center of logging grade (RR grade)

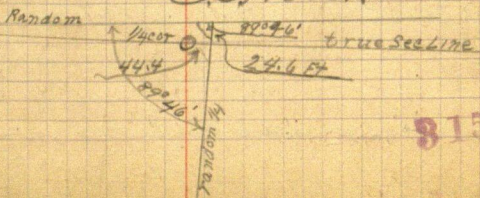
" 5271.4 " "  $\frac{1}{4}$  cor between sees 1 and 12-135-30 sets N. 44.4 ft

" 5296.0 P.I. Hub on E and N random sec line. Read angle of N  $75^{\circ}14'$  random and random N boundary line of see 12 S.W. angle =  $89^{\circ}46'$

Quit for night

Horst at E. J. Wheelers for dinner and overnight

E. B. Horst.



315

**815** Sunday Nov 5-1916.

Horst, transit, and Chain + ap  
 Clarence Wheeler are flag and Chain.  
 Jens Biddahl apeman

We erect a pole at  $\frac{1}{4}$  cor on E side  
 of sec 12 and walk W along wire  
 fence about  $\frac{1}{4}$  mile I set up transit  
 on S side of wire fence and back  
 sight E to  $\frac{1}{4}$  cor, transit telescope  
 and set P.I. Hubs E + W of N + S ~~line~~  
 random  $\frac{1}{4}$  line

Horst & Wheeler go back and  
 chain Hon  $\frac{1}{4}$  line Biddahl  
 cuts  $\frac{1}{4}$  line W.

at 1235.0 ft W enter drained Jarneck  
 swamp

at 1541.0 " " leave Jarneck swamp

" 1630.0 " " set Hub.

" 2615.0 " " P.I. Hub on N and S  
 and E + W random  $\frac{1}{4}$  lines (at sta  
 2643.4 N on N + S  $\frac{1}{4}$  line.) N.E. angle =  $89^{\circ}40'$

at 3270.9 ft W set Hub.

" 5280.0 " " " " and look  
 for  $\frac{1}{4}$  cor between secs 11 and 12  
 where Govt notice call for post and  
**815** C.B. Horst.



sec 12-133-30

38

Nov 5-1916

815

following bearing trees

Popple 4 S 51° W 67 = 44.22 ft.

Alder 2 S 4° E 48 = 31.68 ft. (some B.T.s)

All appear to be gone and we  
proceed to establish the "corner" by  
running the W boundary see 12.

E. B. Horst.

815



315 Monday Nov 6 - 1916

Horst and same crew begin  
at cor to sec 1-2-11-12 previously  
set. I set transit over cor sight E  
on random line and turn SE.  
angle  $89^{\circ}33'$  and run random  
line S

at 801.4 ft S set hub

" 877.0 " " cross old grade

" 897.0 " " enter field

" 1364.7 " " set Hub leave field

" 2388.0 " " enter open Hay meadow

" 2636.0 " " intersect E+W  $\frac{1}{4}$  line

at sta 5263.6 ft W. N.E. Angle =  $90^{\circ}34'$

We look again for  $\frac{1}{4}$  cor (O to F at 5)

but find nothing continue S

" 2850.0 ft S leave Hay meadow

" 3562.4 " " set Hub

" 4200.0 " " enter large swamp

" 4400.0 " " offset W 125 ft to

chain around bog

" 5274.7 ft S set Hub offset back  
125. ft on line

we look for B.T. to each sec 11-12-13-14  
where Govt Notes call for Post and  
following B.T.W

E.P. Horst.

sec 12-135-30

315

40.

Nov-6-1916

B. Pine.  $14 N 2^{\circ} E 700 = 462.00 \text{ ft.}$

B. Pine.  $12 N 3\frac{1}{4}^{\circ} W 685 = 452.10 \text{ ft.}$

B. Pine.  $16 S 1\frac{1}{2}^{\circ} W 725 = 478.50 \text{ ft.}$

Aspen.  $11 S 1^{\circ} E 850 = 561.00 \text{ ft.}$

we find S.W. BT. lying on ground with  
blaze turned up and grown over with moss  
we scrape off the moss and find old  
scribe marks from this tree & set  
corner setting a  $2 \times 4 \times 8$  in W.M. (Boiler plate)  
in west central part of large log  
at sta  $5283.8 \text{ ft}$  S corner to 11-12-13-  
14 sets  $W 13.2 \text{ ft}$

I set 2 Oak posts for bearings to  
this cor. one  $S 45^{\circ} E 46.7 \text{ ft}$   
one  $S 45^{\circ} W 46.7 \text{ ft}$  }  $8^{\circ}$  var.  
(Oak posts being  $4 \times 4 \times 8$  inches)

we return  $N \frac{1}{2}$  mile and set  $\frac{1}{4}$  cor  
between sec 11 and 12

at sta  $2641.9 \text{ ft}$  S and  $6.6 \text{ ft}$  West of  
random line

we walk to Ht 4915 N on N and S  
 $\frac{1}{4}$  line. correcting back correction  
 $= 444 \div 5271.4 = .0084228$  of a foot  
W for each foot N

Ht 4915 N goes  $W 41.40 \text{ ft.}$

CB Horst.

315



41 315

see 12 - 135 - 30

Nov 6 - 1916

Hub 4369.4 N goes W 36.80.

" 3143.5 " " W 26.48.

" 2650.0 " " W 22.32.

quit for night.

E. B. Horst.

315



see 12-135-30

815 42

Tuesday Nov-7-1916.

Horst transit and chain

Clarence Wheeler app. flag and chain

After running E + W  $\frac{1}{4}$  line thru sec

12 I find that an old fence about

20 ft S of the new fence which was

built from the present  $\frac{1}{4}$  cor on E

and as <sup>it is</sup> <sup>the</sup> <sup>1/4</sup> <sup>along</sup> <sup>has</sup> <sup>been</sup> <sup>moved</sup> <sup>on</sup>

I have Ole Sundt, E. Tuttle, and

E. J. Wheeler come to the  $\frac{1}{4}$  corner

and from their evidence I find

that the  $\frac{1}{4}$  cor <sup>was</sup> ~~has~~ been moved.

N 25.3 ft. <sup>from where</sup> <sup>W. H. Hall's first place</sup> <sup>at</sup> <sup>St.</sup>

- by set where I found a marked

Stone) and set I.M. S 25.3 ft and

0.3 ft W which makes it equi-

-distant from sec corners and in

a straight line

I figure correction for E and W  $\frac{1}{4}$

line,  $14.1 \text{ ft} + 25.3 \text{ ft} = 39.4 \div$

by  $5270.2 \text{ ft} = .007476 \text{ ft S}$  for each

foot E - 14.1 ft at each Int.

14.1  $\frac{1}{4}$  cor

5270.2  
E + W  $\frac{1}{4}$  line

N

E. B. Horst.

815

25.3

315

Nov - 7 - 1916

Hub 1630.0 W goes S 13.11 ft.

" 2615.0 " " S 5.75 ft.

Set transit on corrected Hub at 2615 W and sight W on true line and set a Hub W of true N and S  $\frac{1}{4}$  line.

Then set transit on corrected Hub at 2650.0 N and intersect E and W and N and S true  $\frac{1}{4}$  lines and set a 2 x 48 inch I.M. (poker blue) for true center of sec 12 around I.M. with ground and set up a 6 foot guard stake.

this concludes this survey.

P.M. Clarence Wheeler takes me and outfit to Regent where I take train for Walker R.R. fare 0.85 etc

C.B. Horst.

315

63  
44  
19

92  
44  
48  
19  
9  
2



①

44

April 11-1917 Wed-

141-29-30

I am surveying for Mr. Robert Ashkin who owns

Govt Lot 5 Sec 18

N $\frac{1}{2}$  of NE $\frac{1}{4}$  Sec 19.

NW $\frac{1}{4}$  of NW $\frac{1}{4}$  " 20

T 141-R29

Lv Walker 9-30 A.M. Th Cyphers

Lv Cyphers 11-A.M. Via 2 horse team  
with Robert Ashkin Th Ashkin house  
2-30 P.M.

At 4 P.M. We go to the cor to

Secs 13-18-19-24 But

T 141-Rg 29 & 30 where US notes  
call for post & B.T.S. 0.9

Tam 12° N 66° E 26 Lks = 17.16 Ft

Cedar 5° N 67° W 37 " = 24.42 "

Tam 7° S 25° W 18 " = 11.88 "

Cedar 20° S 11° E 16 " = 10.56 "

We find a new 3x3 Cedar post set by

H. Surveyor M.H. Kemp for the line  
section corner and we also find the  
old U.S. B.T.S. plainly marked which  
check out perfect for measurement  
from the center of the new stake to  
the face of the "B.T." marker on the

John W. Cross



② Apr 11-1917

141-29 Sec 18-19

old U.S. B.T.S. except that the old  
stump of the SW Tam is .68 of a foot too  
close.

From the new stake old B.T.S. stand as follows  
 Old Tam <sup>8°40'U</sup> 12" N 65° E 17.16 feet. stump 4' hi  
 " Cedar 5" N 65°20' W 24.42 " green tree  
 " Tam 7" S 26° W 11.20 " 5" stump  
 " Cedar 20 S 11° E 10.56 " green tree

We find new B.T.S. as follows 8°40'U

New Cedar 10° S 36°10' E 13.50 Ft

" Cedar 8° S 40°30' W 18.10 "

" Elm 5" N 30°40' E 20.85 "

" 10" N 6°40' W 30.25 "

Stake sets 12 ft S of 4' creek - Run 15.

From this new stake we chain

E. on old cut out transit line run by Kemp

Ht 182 E cross creek which runs N.

@ 300. 600. 900. set cedar stake

@ 1164.60 a new 3x3 square cedar stake

from which a cut out line runs N. & S.

Ht 1200 E set stake

Chain 3300 ft E + quit for night. Hurley Transit

300' Ch still like Caro Ch + Transit also

Lorson Ch + L. Geo Lorson & Robert Atkins

@ Over night with Atkins

John H. Caro

# Time Sheet Working for R. Perkins April 1917

	10	11	12	13	14	15	16	17	18	19	20	21	22	23	24	25	26	27	28	29	30
John W. Curo	1	1	1	1	1	0	1	1	1	0	1	1	0	0	0	0	1	1	1	0	1
Robert Perkins	$\frac{1}{2}$ PM	$\frac{1}{2}$ PM	$\frac{1}{2}$ PM	$\frac{1}{2}$ PM	1	0	1	1	1	0	1	$\frac{1}{2}$ PM	0	0	0	0	1	1	1	0	1
Olaf Larson	$\frac{1}{2}$ PM	1	1	$\frac{1}{2}$ PM	$\frac{1}{2}$ PM	0	1	1	0	0	1	0	0	0	0	0	0	0	0	0	0
Geo. Larson	$\frac{1}{2}$ PM	1	1	1	1	0	1	1	1	0	1	0	0	0	0	0	0	0	0	0	0
Ray Perkins	0	0	$\frac{3}{4}$	0	0	0	0	0	0	0	0	0	0	0	0	0	0	0	0	0	0
Ed. Perkins	0	0	0	$\frac{1}{2}$ PM	$\frac{1}{2}$ PM	0	0	0	0	0	0	0	0	0	0	0	0	0	0	0	0



141-29- Decr 18-19

April 12-1917. Thurs.

John W. Curo. Hudley Länrit 300' life  
 O. Länson ch + a. Geo Länson has son a  
 Run E. bet 18-19-141-29 running a  
 little south of Kemp's Länrit line to miss  
 a fence, further East.

Ht 300. 600. 900. 1200. stakes set  
 with Länrit Ht 1213. E nail in  
 rotted cedar stump <sup>1368.15</sup> at 1400 leave  
 heavy green Län + cedar swamp  
 1500 stake: 1565 L. swamp: 1626.  
 nail in ground: 1800 stake: 1950 enter  
 meadow 2100 stake: 2110 L. meadow  
 2200 stake in low land: 2400 stake in  
 low land: 2445 hay road NTS  
 2475 ent meadow 2620 L. same  
 Ht 2688.18 ft E. look for 1/4 cor bet 18  
 and 19-141-29 where US notes call for  
 post and: Kt. W @ 6 141-29  
 Birch 4" S32°W 39 lbs

" 4N78°W 13 "

All are gone and we continue East  
 at 2700 stake: 3000 stake: at 3032.90 E  
 nail in dim new road Ht on top of hill  
 at 3038 West end of new fence built by  
 John W Curo

⑤ 141-29  
Secs 18-19

48

April 12-1917 Contd

Hiskins lies North 2 feet Hiskins house  
lies South about 110 feet

Ht nail in old log: Ht 32.32  
Cross new wagon track N to.

at 3300 stake: at 3375 enter wet  
land NW to E

P.M.

Same crew with R Hiskins & man  
@ 3600 stake in low land: at 3700 L  
lowland: at 3900 stake: 3912. Nail  
6 ft south of E & W wire fence

@ 4123.80 Nail

at 4154 about, an old stake set  
South 128 feet about

Ht 4194 enter Pine Lake

4200 pms on ice. 4500, & 4800 and  
5100 stake on ice

To the corner to Secs 17-18-19-20  
T141 R29 Corner on the ice in  
Pine Lake - and as this corner  
has been previously established by

A. Surveys. Mr W. F. Kemp we  
re-establish the point for corner  
on the ice or fallow. Walk  
half a mile south to a stake set  
by Kemp for the  $\frac{1}{4}$  corner between  
John W. Curo



April 12-1917

Secs. 18-19

Sections 19 & 20 T141 R29 where  
U.S. notes call for a post and  
Maple 12" S 82° E 17 LKs =

" 10° S 4° W 10 " = 6.60 ft

We find stumps of the old BTS and find  
a new 1/4 stake previously set by Kemp  
with new BTS but as we do not  
have Kemp's notes we take his stake  
which sets on the North side of a  
new post which marks the South  
end of a line of fence posts running  
1/4 mile North From a point on S.  
edge of 1/4 post being N. side of fence  
post chain north along fence posts  
(No wire yet) all in swamp  
@ 300, and 600 and 900 and 1200 ft  
set stakes; at 1259 feet intersect  
2" I.M. (No cap) being temp' N 1/16 bet Secs.  
19 & 20 set by Kemp in Cen of E & W  
graded road - There are new BTS  
here but we have not got Kemp's  
notes

I set transit over this iron Temp.  
ay 1/16 - back sight South on red  
flag at 1/4 corner - Transit  
John W. Curro

⑦ 141-29  
Secs 18-19

50

Apr 12-1917 Could  
litescope and run north on line with fence  
over road <sup>still in swamp</sup>  $8^{\circ}20'E$ ; @ 300 set stake  
at 471. set stake on sand beach on  
South side of Pine Lake; at about  
480 enter Pine Lake: 600+900+1200  
stake on ice; @ 1259. set stake  
on ice for limp corner to Secs  
17-18-19-20 - 141-29 or where it should  
be if Kemp established his corner  
correctly. Which he did not

Extending our random line East  
at 5189.10 E. the cor. to 17-18-19-20  
sets South 157.20 feet @  $90^{\circ}$  to  
E + W random line. and at  
point of intersection of E + W random  
line with the line running  
South the S W angle reads  
 $90^{\circ}17'20''$

Correcting back West  
5328.18 feet US Chain =  
5189.10 " " " =  
139.08 " short being  
.026103 of a foot short in each  
foot on random  
Still with Ashins John W. Cunn

Note: This correction  
changed lat. Cunn



51

8 141-29  
Sec 18-19

Asterius Survey

Friday Apr 13-1917

J.W. Cuss, Traut + Ch. Ole Larson  
Ch - Fly - a - Geo Larson (hus son)  
a. : Robert Asterius Hx.

We take angles on ice on  
Pine Lake at cr to 17-18-19 20-141-29  
and about 9-30 P.M. Ray Parker  
comes to help us as a man

Correcting

Each hub goes .026103 West (.0261 about)  
and .030294 (.0303 about) South

Hub 300 E goes S  
600 E " S  
900 E " S  
1200 E " S

This  
correction  
not used  
see page 32 to 34  
cuss

1368.18 E goes 35.71 West to 1332.47 E  
1332.47 E goes South 40.37 to West  
1/16 but 180 19- 141-29

1500 E goes South  
1620 E " "  
1800 E goes S.  
2100 E " S  
2200 E " S  
2400 E " S

This  
correction not  
used see pg  
32 to 34 cuss

2688.18 E goes West 70.17 to 2618.01 E  
2618.01 E goes South 79.33 to temp  
1/4 Cr but Secs 18-19- 141-29

2700 E. goes South

John W Cuss

All random plates were set on  
line with the correct.





Apr 13-1917. Contd

141-29

Correcting bet Acers 18-19.

3000 E. goes South  
 3032.9 E "  
 3300. E "  
 3600. E "  
 3900 E "  
 3912 E "

Nat'l. This  
 correction  
 not used  
 C.W.

4008.18 E. goes N 104.63 To 3903.55 E  
 3903.55 E " S 118.25 To Temp. E 1/4  
 bet sec 18 & 19 - 7141-29

4123.80 E goes S

We walk West to stake 2700 E and chain  
 West 81.99 feet and set hub @ 2618.01 E from  
 which we turn 90° from random and chain  
 South 79.33 and drive hub for Temp. 1/4  
 Cor bet 18 & 19 - 141-29 Then  
 transit-tilscope and run North  
 Chaining from Temp. 1/4 in East edge  
 of meadow:

@ 300 and 600 set cedar stakes with  
 transit in E edge meadow

At about 750 to meadow c

at 900 N set stake with transit

1110.10 N. Hub 1200 stake

From temporary 1/4 cor bet 18-and-19 cut  
 a line a few hundred feet South  
 (90° to random) to Parker field

John W. Cuss

(Note: This 4470.02  
 changed to bet 18 & 19)

all random stakes are  
 set on line with the lowest

April 13-1917 Contd 17-18-19-20-141-29

I leave crew wd. figure corrections and while I am away someone sets fire to Parker meadow in NE 1/4 of SW 1/4 Sec 18-141-29 Ray Parker says he set the fire. Smoke too thick to work in and the crew come in early and all take dinner with Haskins.

While we are at dinner fire burner Parker burn house and about a half of his hay.

P.M.

Haskins stays to back fire. rest of crew go to 1/4 cor bet 17 and 18-141-29 where

U.S. notes call for a post and BTS viz Birch  $5^{\circ} 37' 8'' E 21 \pm$  kts.

Oak  $7^{\circ} 3' 13'' N 33$  "

Larson shows me a stake with iron marker also two bearing trees about 5 years old well scribbles marked for the 1/4 corner. Stake + trees set about two or 2 rods West of a transit line run two years ago by M.H. Kemp.

As Kemp has established this line I re-land his survey in order to find John W. Cans



April 13-1917 Could 17-18-19-20-141-29  
his stakes. We walk North along  
Kemp's transit line but are unable to  
get across a small lake just South  
of the Cor to Secs 7-8-17-18-141-29  
and walk back to North bank of Pine  
Lake where I drive a hbr in Kemp's  
random line about 20 ft. N. of water  
and mark some O.O. Focus telescope  
on Kemp's line South occurs Pine Lake  
at a pt a mile away and run South  
on ice

Reg @ Hat O.O. Chem So on in

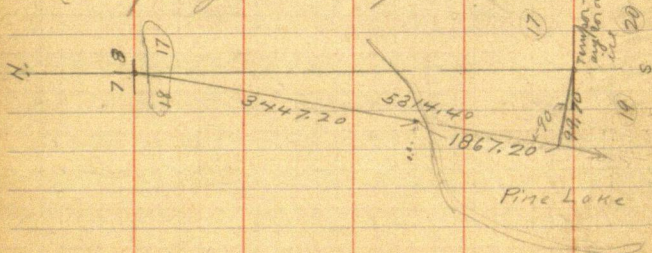
H<sup>6</sup> 1867. 20 ft. to turn 90° and run

99.70 ft East to small cedar stakes set on

ice for <sup>Temp</sup> cor to 17-18-19-20 - T141-29

Askins does not work in survey in P.M.

Quit tonight our night with Rhein



Jahn W Curo

April 14-1917. Saturday 17-18-19-20-

John McCus - Linnit & Ch. Gentry Linnit  
300' Ch. Lape. H. skins Ch. Fly. Hxc  
Ole and Gus Larson Hxc

Bag @ Hub 1110.10 N. and  
continue N. on random thru cen of sec  
18-141-29.

Ht 1200-1500, 1800 N. set stake

@ 2046.70 N. set Hub; 2100. stake;

@ 2261.80 Hub; 2400 stake

@ 2442.50 Hub; 2700. stake foot of  
hill on N. side; 3000 and 3300 stake  
at about 3376 set Hub?

3600 stake. about 3625 old logging  
road E & W. water drain. West. good  
place for ditch.

at 3900 stake; 3964.50 cen main  
wagon road in curve - Corner SW  
and SE;

4006.40 Hub; 4200 stake

P.M.

Ole Larson goes to Twp meeting in P.M.  
and Joy Parker works

Continue N. at about 4375 we are  
20 ft E of 8. foot creek coming up from  
the West - Rapid current. 8 inches deep

John McCus



April 14-1917 Contd

Sec 7-18-141-29

solid bottom

At 4418.20 Hub on sharp point coming from the East 30. ft E. of creek

4500. stake:

4584 Cen of same creek about 40 ft west of bridge on old main hole road which runs S. about  $10^{\circ}$  E & NW. Creek runs E

at 4700 Cen of same old road NW &amp; SE

4725 Cen of same road runs SE &amp; West

at 4742. Hub

4790 dead creek drains E

4800 stake Thence up hill

5100 stake at 5220 <sup>about</sup> old road <sup>marked</sup> runs

at 5287.50 wire fence (crossed) runs

at 5303.50 old  $\frac{1}{2}$  port sets East 2.00 feet

At this point being the 1/4 corner bet Secs 7 and 18- T141- R29 M.S. notes call for a port and: "It. X at 6"

Poplar 5" S  $73^{\circ}$  E 26 Links =" 4" N  $76^{\circ}$  W 5 " =

We find the old port plainly marked and what I believe to be the route of the old bearing line: Geo Larson says his father has been here 8 years and the port was here when

John W. Curo

April 14 - 1917

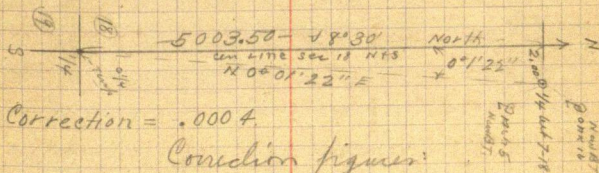
Sec 7-18-141-29

they came - It is a very old post 4x4x5 ft  
above ground from which new oak bearing  
tree probably marked 15 or 20 years ago  
face the post. and is 16" N 17° 28' E 5<sup>5</sup>/<sub>8</sub> ft distant

I put a new spot at base of tree in which  
I drive a nail also mark another tree  
as a new bearing after which new BTS  
are as follows

Oak 16 inch, N 17° 28' E <sup>50.50</sup> 50.00 feet  
Ash 5 " S 17° 18' E <sup>51.70</sup> 51.70 "

We turned from the random which reads  
at this point about 8° 30' E



Correction = .0004

Correction figures:

300 N goes E	.12	of a foot
600 N " E	.24	" "
900 " " "	.36	" "
1110.10 N " "	.44	" "
1500 N " "	.60	" "
1800. " " "	.72	" "
2046.70 N " "	.80	" "
2100 N " "	.84	" "

Not this  
correction changed  
see page  
encl

Jahn W. Curo



59

16

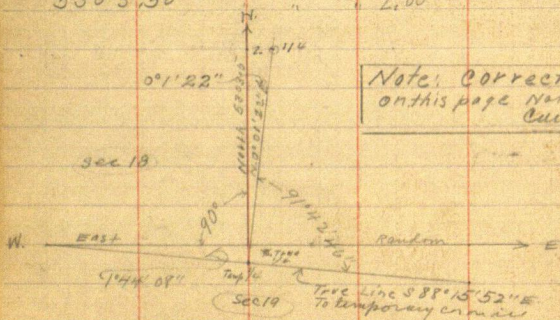
April 14-1917. Cont'd

Sec 18-141-29

Correction ON NXS Cen line 18-

Hob 2261.80	N	gass	E	.88
2400	"	"	"	.96
2442.50	"	"	"	.98
2700.	"	"	"	1.08
3000	"	"	"	1.20
3300	"	"	"	1.32
3376 ?	"	"	"	1.34
3600	"	"	"	1.44
3900	"	"	"	1.56
4006.40	"	"	"	1.60
4200.	"	"	"	1.68
4418.20	"	"	"	1.77
4500.	"	"	"	1.80
Hob 4742.00	"	"	"	1.90
5303.50	"	"	"	2.00

Note: This  
correction changed  
see page 16



Note: Correction  
on this page not used  
Curo

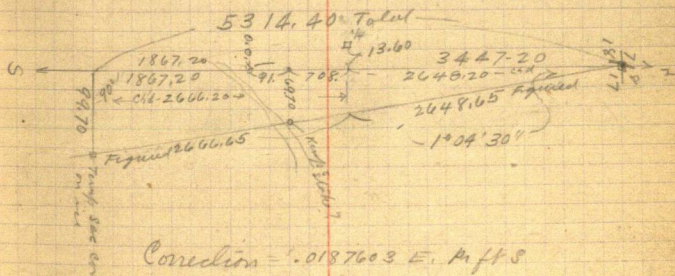
Still with ashies

John W. Curo.

April 15-1917

141-29

Sunday: I and my wife and  
baby all staying with Ashkins  
on NW 1/4 of NE 1/4 Sec 19-141-29  
No work to-day



Correction = .0187603 E. of S

Sine = .0187603

Cosine = .99983

Note: Correction on this  
Page not used  
Curo

Jahn W Curo



7-8-17-18  
141-29

April 16-1917 Monday

Still working for Robert Haskins

Curo-Haskins-Lesson & Son - Guelly Transit  
300 ft steel tape Begin at Hub 0.0.  
on North side of Pine Lake on Kemps  
random Transit line running South  
from the corner to Secs 7-8-17-18.

Chain N. on old transit line.

@ 91.00 an old stake probably set by some  
one lies on the ground 69.70 ft  
E. of random @  $90^\circ$  angle. I stand the  
post up and drive it in the ground  
where point of stake corner.

Old bearings probably set by some one  
stand as follows:  $V. 8^\circ 30'$

NP 24 S  $22^\circ 15' W$  89.20 ft

5" oak which has burned out by the  
roots appears to have stood

S  $18^\circ E$  15.15 feet to face of figure

Kemps transit line appears to run  
on about  $8^\circ 30'$ . Continue North

@ 300 stake corner mark. @ 600 stake

@ 799. N. the old  $\frac{1}{4}$  post bet Secs

17 &amp; 18-141-29 sets West 13.60 feet

New BTs are: Maple 8" N  $65^\circ 45' W$  23.40 ftIron wood 55  $58^\circ E$  3.85 ft

John W Curo

April 16-1917 cont'd

Continue North: @ 1130 stake: 1133 Cen of main  
wagon road E + W 1200: 1400 enter  
east edge of green tain and cedar swp  
1600. 1800. 2100. 2400. stake

2460 Cen of 8 ft creek runn "NE: 6"  
water swift current solid bottom

2700. stake: at 2880 set stake in  
snow on S. side of lake in swamp  
near MC N<sup>o</sup> 35. where US Natis call  
for Port and

Tan 6° S 72° E 19 LKS =

" 6 S 13° W 24 "

All appear to be gone and we chain  
across very dangerous ice

Mr. Arkin going on the ice:

At 3180 stake on ice. At about 3517

Li lake 3447.20 intersect old stake

Set by Kemp for the corner to sec 7-8-17-  
18-7141-29. (At 3480 set stake then

chain back 32.80 ft to sec cor)

At cor to 7-8-17-18 MS natis call for a  
port and

Poplar 6" N 52° W 34 LKS = 22.44 ft

Birch 5" N 30° W 6 " = 3.96 "

" 5" N 24° W 4 " = 2.64 "

" 5" S 72° E 6 " = 3.96 "

John W. Curre



Apr 16-1917 Contd

141-29

We find the old original US stake  
also a new stake set in the same place  
by Kemp but the U.S. surveyors got  
their notes all balled up so to bearing  
lies. I find three old BTS which I  
positively know to be the old US B.T.S. but  
they recorded "Poplar" for "Birch", and  
"Birch" for "Poplar" and corners reversed etc

From the true corner old BTS. are  
Old Pop stump 10" - 4' hi N  $36^{\circ}$  E 4.30 ft

" Birch 6" S  $17^{\circ} 30'$  W 2.80 feet

" Birch 6" N  $50^{\circ}$  W 22.44 "  $8^{\circ} 30'$

New BTS set by Kemp at  $8^{\circ} 30'$  all

New Ash 5" S  $83^{\circ}$  E 12.50 ft

" Birch 10" N  $16^{\circ} 20'$  E 16.50 ft  $8^{\circ} 30'$

At M.P. No 38. US notes call  
for post and

Tam 3 N  $22^{\circ}$  W 18 LKS = 11.88 ft.

" 3 S  $75^{\circ}$  W 12 " = 7.92 "

We find the tell stump of two 3 inch tamaracs  
but they do not check for corner distance  
and stand just 4 feet apart the  
one stump stands SE 61.00 ft from  
Sec Cor post and the other SW 66.50 ft  
from Sec Cor post of 7-8-17-18-141-29

John W Cuss

Apr 16-1917 Contd

141-29

Chained to the scrub marker on the south side of the 3. inch laminar stump.

We ignore this meander corner as it is so close to the sec corner.

We walk around West end of small lake - cross 10' creek running West and walk South half a mile to old stake set for 14 bet 17-18-141-29 from which measure West @  $9^{\circ}$  S; :

@ 101.90 Hub - 300, 600 stake, 649.40 Hub

900 stake: 932.40 Hub: 1037 dim road

NW + SE: 1050 pins: 1200 stake:

1350 Hub: 1405. Cen of main wagon

road NE + SW: 1500 stake 1604.40 Hub

1800 stake enter south edge of alder swp

1900 to same: 1929.80 Hub: 1950 stake

2100 - 2250 - stake: 2296.90 Hub on high hill

2300. stake

At 2393.90 W indirect transit line from the South, 2600.40 North.

NW angle reads  $89^{\circ}47'20''$ .

Continue West: 2400. stake: 2580 int swp:

2600 stake in swamp.  $\delta 9^{\circ}$

Shift with Astoria Storm begins at dark

John W. Ellis



April 17 1917 Tuesday

Haskins Survey - Curo-Haskins-Larson & son  
Continue Weston center random line of sec 18-

141-29. at 2900 stake to dead Lomax center  
open wet bog. 3200 stake: 3366 creek 3'  
wide 3' deep and bottomless with an 8 foot  
flag pole Creek runs North-then NE  
c. 3500 stake: 3508 Hub L. open wet bog  
enter Lomax swamp - 3800 stake  
3989.60 Hub in swamp near some big  
green cedar trees. 4100 stake: 4384.70  
back in bog in swamp  $18^{\circ}30'$ : 4400 & 4700.  
stake: 4937. Hub: 5000 stake leave swamp  
foot of high hill, East side.

5022. 50 feet West the  $\frac{1}{4}$  corner  
Set North ( $90^{\circ}$  to random) 85.00 feet

At this point being the  $\frac{1}{4}$  corner  
between Section 18. T.141 R.29 and  
Section 13. T.141 R.30 US notes call  
for post and

Cedar 16" N  $31^{\circ}30'E$  33 Links = 21.78 feet.  
W. Pin 30' N  $47^{\circ}30'W$  23 " = 15.18 "

We find the solid sowed ~~of~~ stump  
of the white Pine plainly marked - also  
the Cedar down but plainly marked  
and from a point where the figures

Jahn W Curo

April 17-1917. Cont'd

of the cedar would come if the tree was stook up. we drive a stake and set the  $\frac{1}{4}$  corner by flat chain from face of bearing trees after which position of trees is as follows:

Old WPine N  $45^{\circ}$  W. 15.18 ft to upper spot. Old Ced N  $36^{\circ}$  E 21.78 original position of old "B.T." marker.

We put in a new bearing being a nail in flat spot on shell of 40 inch W.P. stump-bearer S  $28^{\circ}30'$  W 23.30 ft  $08^{\circ}30'$  E. in sec 13 T141 N30

Dinner late. P.M.

We walk East on ice in pine lake to random line running East bet secs 18 & 19. 141-29 and beg at stake 5100 E we continue same line East on ice random bet secs 17 & 20.

at 5400. 5700. 6000. 6300. 6600. 6900. 7200. 7300 stake on ice

at 7400. about center to end of small island. 7500 to same. 7600 Hub on ice

+ 238. = 7838 Hub on sea wall 50 ft east of east edge of Pine Lake - Marshy shore. 7900 stake in swamp. 8100 to swamp.

John W. Curo



141-29

Between 17-20

April 17, 1917, Cont'd

8100 E to swamp. 8200.-8500. 8800

set stakes:

From Hat 7838. E, on seawall  
fence post bears  $S 25^{\circ} 31' E$  244.80 feet

And another small stake set by  
someone sets  $S 18^{\circ} 43' E$  280.30 feet

(By figures)  $25^{\circ} 31' \begin{cases} \text{Sine} = .43077 \\ \text{Cosine} = .90246 \end{cases}$

Sine = 105.45 feet: Cosine = 220.92 feet

Ht 7943.45 East fence post sets South  
220.92 feet

Figuring  $18^{\circ} 43' \begin{cases} \text{Sine} = .32089 \\ \text{Cosine} = .94712 \end{cases}$

Sine = 89.95 feet: Cosine = 265.48

Ht 7927.95 feet E, sets South 265.48 feet.

*John A. Curo*

April 18-1917 Wed

Curo-Holman & Geo Larson continued  
Eaton random bet secs 17-20

T. 41. R. 29.

Ologaster to Cyphers with Cyphers

Beg @ Hub on Sea wall E side of Pine  
Lake (Curo spear 17# Muskie with  
flag pole) Beg to Chain from stake 8800 E.

@ 9092 E cross wire fence North

of 1/4 post on E & W fence line where  
Swearingen put in a post  
from the notes given him by W. H. Kemp  
who said each side was 27 feet that  
E & W. Mr Swearingen says

@ 9100 Hub: 9200 stake: 9224.70 Hub

9475 new wagon trail bears NW and S

9500 stake: 9675 enters small swamp

9800 stake: 9825 L. swamp: 9900 stake:

10000 stake: 10200 Hub:

10.410.00 E. set hub in New N & S  
graded road from which the  
corner to sec 16, 17-20-21 sets  $30^{\circ}51'E$   
275.60 feet.

Figuring  $0^{\circ}51'$  { Sine .01483  
Cosine .99989

Sine = 4.09 E feet: Cosine = 275.57

At 10.414.09 E the cor sets South 275.57 S

At this point being the corner to  
John W Curo



April 18-1917 contd

Secs 16-17-20-21-T141-R29 U.S. nation call  
for a port and

Oak 5" N 68° E 5 Lks = 3.30 Ft

Maple 6" N 66° W 7" = 4.62 "

Oak 10" S 62° W 25" = 16.50 "

Birch 5" S 67° E 6" = 3.96 "

We find the 10 inch oak standing  
green plainly marked from which we  
set a small stake in the center of the  
N + S graded road @ 8°30' S from  
faced figures

All other bearing trees have been graded  
out. Another bearing tree probably 10.  
years old, being an 8 inch seed oak  
bears N 58° E 21.50 feet

2. New B.T.S. set by Kump are as follows

Tamarac 12" N 39° W 68.30 Ft

Dead Oak 7.53 4°30' W 38.80 "

The old sec corner has been set west in  
order to grade the new road and bears  
S 86°30' W 20. feet. The new graded road  
runs N 0°40' W all @ 8°30' S

We cannot see the graded road South  
on account of a hill

At 1/4 bet Secs 17-20-141-29 U.S. nation

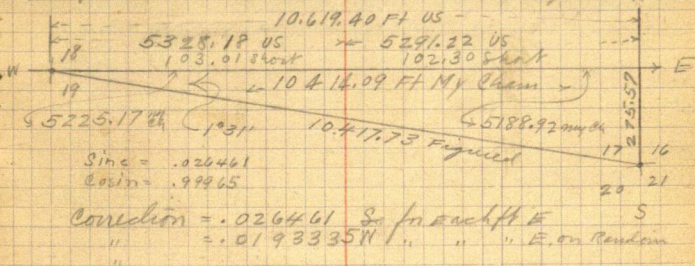
John W. Curre

April 18-1917. Cont'd

Call for Post and

Poplar Branch N 21° W 21. LRS

Papaya 4 " S 13° E 7 " all are good.



106/9.40 05 (= 104/4.09 My 04 via random line)

205.31 short in latit. 2. miles (vs Random line)

P.M.

From Kemps iron N. 1/4 cor bet Secs  
19 and 20. West to about where Kemps  
transit line crosses the E & W graded  
road, is about 123.4 feet or near  
as we can tell without the transit  
and from his 74 corner, West to  
his transit line is about <sup>147.3</sup>~~148~~ ft.  
and from the cor. 19-20-29-30 West  
to his transit line is about <sup>196.1</sup>~~198~~  
feet taken by eye without the  
transit. Rough ch from 74 to  
Chains 2518. feet. John W Carr  
Still with skins



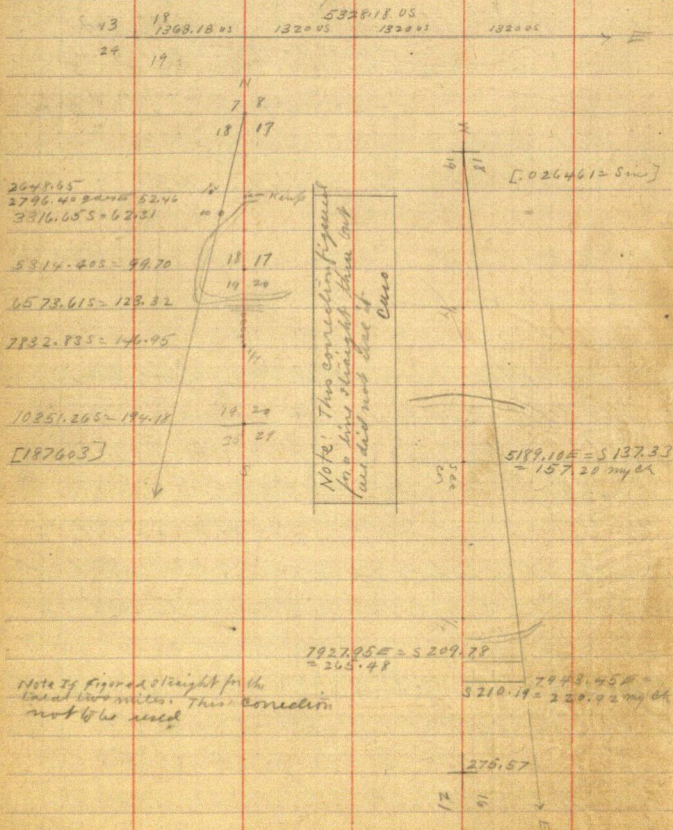
71

(28)

141-29

April 19-1917 Thurs

Ole & Geo Larson comes but it rains  
all AM I figure connections  
Larsons get lunch with Perkins and go  
home Rains all day.



April 20-1917 Friday

Curo. Asterios - Ole Larsson & son Gus.

Begin at Kemp E  $8\frac{1}{2}$  but Secs  
18 and 19. 141-29 We begin at random stake  
3900 E. and chain East 30.69 to 3930.69 E  
and put hub on random - turn  $90^\circ$  and  
cut line North on random thru cen of SE  $\frac{1}{4}$   
of sec 18-141-29. The lake shown by the US plat  
is not there. We run North about half a  
mile - cross about of lake and place hub  
on random line, running west at  
1183.50 West of the old  $\frac{1}{4}$  port

PM

Set transit on hub 1183.50 telescope on  
random South and chain South @ 20. ft  
ends west bog at 345.40 set hub.  
Left N of water - marshy bank on N. side of  
Pine Lake. Cut brush around West  
corner of lake then walk a mile South  
to Kemp  $\frac{1}{4}$  cor but Secs 19 & 20  
where US notes call for post and  
Maple 12 S  $82^\circ$  E 17 Lks - 11.22 ft  
Maple 10 S  $4^\circ$  W 10 Lks - 6.60 "

We find a post set by Kemp for  
the line  $\frac{1}{4}$  corner with new B.T.S.

John W Curo



April 20-1917 Could  
and from which a new line of fence posts  
with no wire runs north nearly 80 rods  
to E & W graded road.

We check Kemps line as follows

Set line over Kemps hat

147.30 ft W. of his 14 cor. back right 0 mile  
North across Pine Lake and run South on  
Kemps old line and at 2518.80  
to the cor. to near 19-20-29-30-141-29

sets East 196.10 ft at  $90^\circ$  angle. Arkins  
& Cues chaining with plumb-bob.

At Cor. to 19-20-29-30-141-29 US notes

call for post and

Maple 12" N  $52^\circ$  E 10 LKs = 6.60 ft

Oak 10" N  $62\frac{1}{2}^\circ$  W 13 " = 8.58 "

Poplar 8" S  $43^\circ$  W 23 " = 15.18

W Pine 17" S  $59^\circ$  E 45 " = 29.70 ✓

We find all the old bearing lines  
except the NE maple. The oak is down  
also the poplar. The W P stump is only a  
stump but plainly marked. We find  
the stake set by Kemp for the line corner.  
Still with Arkins.

John W Cues

April 21-1917

141-29

Saturday.

Geo Larson reports for work - he and Atkins cut brush all forenoon along west shore of Pine Lake.

I figure notes and decide to go to Walker for more information & check up my MS. notes.

P.M.

Atkins + team take I and my wife and baby to Cyphers where we catch P.M. train to Walker.

April 22-1917 Sunday  
all day in Walker.

April 23-1917 All Day in Walker.

April 24-1917 I take 15 I.M.S. via freight to Cyphers and go with them.

Atkins meets me with team and takes me home with him.

Over night with Atkins.

John W. Carr



April 25-1917

141-29

Wednesday

Hokum Survey

Two inches of snow fell  
last night. I figure correction all  
a.m.

P.M.

Correcting

Our temporary corner which we  
have been using on the ice to record  
17-18-19 20-141-29. must go North 74.10  
feet to a point 83.10 ft South of Hub 5189.10 E.  
on our random line coming from the West.

Thence East 36.07 feet to 5225.17 East  
which would fix its line position by flat  
chain proportionally made from the  
nearest known US corner N-S-E + W  
4008.18 E goes West 77.49 to 3930.69 E

Thence South 62.51 ft to E 1/4 bet Secs 18 & 19

Hub 2688.18 E. goes West 51.97 to  
2636.21 E. Thence S 41.93 ft to line 1/4  
between Secs 18 and 19.

Hub 1368.18 E. goes W 26.45 to 1341.73 E  
Thence South 21.34 ft to line N. 1/4 bet  
18 & 19.

Correction - .0123335 of a foot N. for each foot E  
and .015904 of a foot S. for each ft E.

Sine - .015904

Cosine - .99987

Snow all day. I stay in

John W. Curo

Apr 25-1917  
contd

conté

2

141-29

7 | 8

18 | 17

2649.20

5184.20

5-92.10

50210

51815

 $1253.40, 1254.40, 1296.05, 1296.05, 1296.05, 1296.05$ 

44

18 17

19 20

74

19 20

30 29

5

0.55-

5225, 17 MY CA

13	18	1341.73
24	19	

1294.98

1294.48

1294.40

8'30

1/2  
wt 18 and 19  
18-1-28

Traveling

Sine - 1015994  
 Cassin - 99987

Cash - 1998 v. 7

John W. Curro



April 26-1917 Thurs.

141-29

Hskins Quarry

To correct random line bet sec 18-19

141-29 = .015904 S. for each foot

300 E gain S 4.77

600 " " S 9.54

900 " " " 14.31

1200 " " " 19.08

\* 1341.73 E gain S 21.34 To W 1/16

1500 E gain South 23.86

1626. " " " 25.86

1800 " " " 28.63

2100 " " " 33.40

2200 " " " 34.99

2400 " " " 38.17

Set I.N. 2X48 in

\* 2636.21 E gain S 41.93 To 1/4 bet 18 & 19 mound - No cap

2700 E gain S 42.84

3000 " " " 47.71

Set Hub

3032.90 " " " 48.24

3300 " " " 52.48

3600 " " " 57.25

3900 " " " 62.03

Set 2X48 IN

\* 3930.69 " " " 62.51 To E 1/16 bet 18 & 19

1/16 mound No cap

4123.80 " " " 65.58

2X48 IN

No cap

and then E. 49.80

To I.N. on sec wall

5225.17 Cor on line would be 83.10 feet

\* 3800 E gain S 60.43 No word hub on line line

Reg @ 2700 E Chain W 63.79 to 2636.21 E Then S

41.93 and set I.N. being 2X48" boiler tube in mound for 1/4 bet 18-19 No B.T.S.

\* Ht 2818 E Chain S 44.85 ft and set hub on line line

\* Ht 3930.69 E " " 62.51 ft and set I.N. being 2X48" boiler tube in mound for E 1/16 bet 18-19 and

\* Ht 4123.80 E Chain S 65.58 ft and set hub over which I set bearing - back sight on I.N. 1/16 and run E 49.80 ft to 4173.66 E where we set I.N. being 2X48" boiler tube set in a mound on sec wall W. side of Pine Lake 10 ft from water

\* Ht 2636.21 E I put in a hub on random

Note: points mtd. I have been checked over and hub on mound. Curo

John W. Curo

Apr 26-1917 Contd

To correct Center lines of sec 18-141-29

The temporary 1/4 cor bet 18 & 19 is 18.20 ft  
 too far West and 37.40 ft too far South

On NYS Bandon

Stake No	300	N =	242.60	N - goes East
"	600	" =	562.60	" "
"	900	" =	862.60	" "
"	1110.10	" =	1072.70	" "
"	1500	" =	1462.60	" "
"	1800	" =	1762.60	" "
"	2046.70	" =	2009.30	" "
"	2100	" =	2062.60	" "
"	2261.80	" =	2224.40	" "
"	2400	" =	2362.60	" "
"	2442.50	" =	2405.10	" "
"	2700	" =	2662.60	" "
"	3000	" =	2962.60	" "
"	3300	" =	3262.60	" "
"	3376.2	" =		" "
"	3600	" =	3562.60	" "
"	3900	" =	3862.60	" "
"	4006.40	" =	3969.00	" "
"	4200	" =	4162.60	" "
"	4418.20	" =	4380.80	" "
"	4500	" =	4462.60	" "
"	4742	" =	4704.60	" "
"	5303.50	" =	5266.10	" "



Correction = .0030762 of a foot + 2 ft E for each foot  
 each hut is South of the N. 1/4 cor

Note: Points checked off  
 " " thus have been corrected  
 over

John W. Cunn



April 26-1917 Contd

✓	3 00	N = 262.60	N = 5003.50	S gain = 15.34 + 2 = 17.34
✓	6 00	" = 562.00	" = 4703.50	" = 14.47 + 2 = 16.47
✓	9 00	" = 862.60	" = 4403.50	" = 13.55 + 2 = 15.55
✓	11 10.10	" = 1072.70	" = 4193.40	" = 12.20 + 2 = 14.20
IM	13 39.07	" = 1301.67	" = 3964.43	" = 12.19 + 2 = 14.19
	13 39.52	" = 1302.12	" = 3963.98	" = 12.20 + 2 = 14.20 JM
✓	15 00	" = 1462.60	" = 3803.50	" = 11.70 + 2 = 13.70
✓	18 00	" = 1762.60	" = 3503.50	" = 10.79 + 2 = 12.79
✓	20 46.70	" = 2069.30	" = 3256.80	" = 10.02 + 2 = 12.02
	21 00	" = 2062.60	" = 3203.50	" = 9.85 + 2 = 11.85
✓	22 01.80	" = 2224.40	" = 3041.70	" = 9.36 + 2 = 11.36
	24 00	" = 2362.60	" = 2903.50	" = 8.98 + 2 = 10.98
✓	24 42.58	" = 2405.10	" = 2861.00	" = 8.80 + 2 = 10.80
PT Run	26 00.40	" = 2563.00	" = 2705.10	" = 8.32 + 2 = 10.32
IM	26 40.74	" = 2622.34	" = 2642.76	" = 8.19 + 2 = 10.19
✓	27 00	" = 2662.60	" = 2603.50	" = 8.01 + 2 = 10.01
	30 00	" = 2962.60	" = 2303.50	" = 7.08 + 2 = 9.08
	33 00	" = 3262.60	" = 2003.50	" = 6.16 + 2 = 8.16
	33 76	" =	" =	" =
	36 00	" = 3562.60	" = 1703.50	" = 5.24 + 2 = 7.24
	39 00	" = 3862.60	" = 1403.50	" = 4.32 + 2 = 6.32
	40 06.40	" = 3969.00	" = 1297.10	" = 3.99 + 2 = 5.99
	42 00	" = 4162.60	" = 1193.50	" = 3.39 + 2 = 5.39
	44 18.20	" = 4380.80	" = 895.30	" = 2.72 + 2 = 4.72
	45 00	" = 4462.60	" = 803.50	" = 2.47 + 2 = 4.47
	47 42	" = 4704.60	" = 561.50	" = 1.73 + 2 = 3.73
	53 03.50	" = 5266.10	" = 00.00 South	" = 0.00 + 2 = 2.00

correction = .0030762 + 2.00 ft E for each foot S.

41.23 To  
2604.23 N  
PT PI. Hub mhd "2600.40 N" = 2493.90  
1032 ft and set hub on line E & W random over  
which I set transit sight North on a  
flag set 10.01 ft E of "Galaxy mhd" 2700 N  
and chain North along the line ten line  
4034 feet where we set an IM line 2x4s.  
in a corner line in big mound of dirt  
with 4 pits NE-NW-SW-SE  
Pits are 2' square and 3" from side.

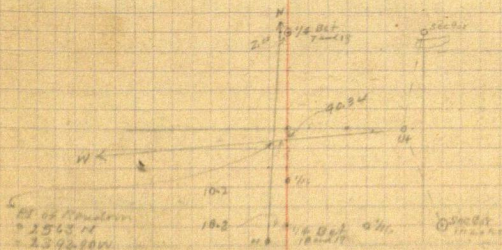
Note: Points checked off this V.  
in this book I have been  
checked over. Cues

John W. Cues

April 27-1917 Friday

T. Correct E + W Can line of sec 18.

✓ Hat 101.20 Vigas N	172	169	
✓ 649.40	1099	1079	
✓ 932.40	1578	1547	
✓ Hook 1241.85		20.61 To $\frac{1}{16}$ sec I.M.	
1350.00	2240	22.41	
✓ 1604.40	2715	26.62	
✓ 1929.80	3266 = 2029 and gas N	33.70	
✓ 2246.90	3887 = 2396.90	39.79	
✓ H 2383.7	40.34 = 2483.70 and gas N To center of sec 18	41.23	
2483.7	41.73 To Center of sec 18 Sub I.M.		
PER 2343.40	40.52 = 2393.9 W = 2493.9 T gas N		
3509	59.37 = 3608 W T gas N		
3984.60	67.53 = 4089.60 and gas N		
4384.70	74.21 = 4484.70 W and gas N		
4437	88.53 = 5037 W and " "		
5022.50	85.00 = 5122.50 W and gas N	85.00 ft	
5122.50	85.00 To line $\frac{1}{16}$ W. side Sec 18		
[Correction = .016924 of spot N. for each ft W.]			
.016593 ok.			



✓ 0121.00 Vigas	N 35.54 = 2200 gas N	36.50
✓ 0118.00 W	" 30.46	29.87
✓ 171.5 W gas N	28.44 ok	

W. Can Line of Sec 18.

Correction = .016593

1/16 E

5122.50



141-28

Apr 27-1917 Condit

Hickins and Curs finish correcting the  
N & S. Cen line of the S<sup>th</sup> half of Sec 18.  
put in all stakes and iron center then  
find that we have dropped 100 feet in  
chaining west from Stake 1800 West to  
the center of Sec 18. and that the total distance  
from the  $\frac{1}{4}$  on E side West to the cen is  
2483.70 feet and the total dist to the  
 $\frac{1}{4}$  on West side is 5122.50

We make the correction but do  
not erase any figures from this book

We put in  $\frac{1}{16}$  corner in cen of  
East half of sec 18. as follows:

Begin at hub 1350 W. and chain  
East 108.15 ft to 1241.85 West where we set  
liant and turn 90° and run N 20.61 feet  
and set 2x48 inch I.M. being boiler tube  
in mound of dirt

We correct all hubs from the  
Center of 18. east to the  $\frac{1}{4}$  bet secs  
17 and 18 - T141-R29 where we take up  
the old US stake and put in its  
place an iron monument being  
2x48 inch boiler tube set in mound  
of dirt.

John W Curs

April 28-1917. Saturday

Curo & Hskins working To correct  
the N + S Cen Line of the S.E. 1/4 of Sec 18.

We begin at I.M. being E  $\frac{1}{16}$  Cor bet  
Acres 18 and 19-141-29 and Chain N. along  
liarrit line Ht 62.51. Hub on E + W  
random mkd "3930.69 E"

Ht 300 stake. 468. Hub: 600 stake; 900 stake  
916.60 Hub: 1200 stake. 1250.50 hub on  
Sea wall pin Lake. Lake runs NW + SE

From a stake mkd 00. across  
lake on sea wall of N. shore the  
I.M.  $\frac{1}{16}$  in Cen of E half of 18 sets  
366.30 ft North along random line  
thence West ( $90^\circ$ ) 59.65 feet

Not being able to chain across  
lake I figure the total length of this  
line as 2598.16 feet so that at  
2598.16 N. the I.M. sets West 59.65 ft

Correction - .02295855 of a foot West for  
each foot North

Correcting random

Ht 62.51 N set a hub W 1.43

468.	"	"	"	"	10.70
916.60	"	"	"	"	21.00
1250.50	"	"	"	"	28.70

Setting liarrit on Hub 1250.50 N

Jahn W Curo



83

40 141-29

Apr 28-1917 Could

turn  $90^\circ$  to random and run West 28.70 ft  
and set hub on line line. which by  
figures is 1250.82 N via line line

Sine figures .022959

Cosine " 1.191 99974

Angle " 1.191 Left

Set liant on Connected hub 1250.82  
back right on 1250.50 on random- turn  
 $90^\circ$  to Left- then  $1^\circ 19'$  to Left =  $91^\circ 19' L$   
and cut brush North to the lake  
till I can see the iron monument in  
cen of E. half of sec 18. wire in liant  
almost cuts the corner.

Focus on corner and continue North  
on line East  $\frac{1}{16}$  line of sec 18-141-29  
Chaining from hub 1250.82 At 48.26 set  
Hub 1299.08 N. which we pull up and put  
in its place a 2x48 inch border line  
I.M. for line  $\frac{1}{16}$  corner in cen of SE  $\frac{1}{4}$  of  
Sec 18- T141-R29 with good mound and  
pits.

At 76.88 set Hub 1327.62 N. set on seawall  
of Pine Lake 10. ft West of water edge- rocky  
shore. At 160. - 1410.82 N. enter water's  
edge 10. ft East of seawall; at 1460 we are  
2. ft E. of water edge and 12. ft E. of seawall

John W. Carr

Apr 28-1917 Cont'd  
 rocky shore. Ht 250 = 1500.82 Ld water  
 edge 10. ft E. of seawall or bank  
 at 300 = 1550.82 set stake 5. ft W. of water  
 and 5. ft E. of bank. Ht 333.00 = 1583.82  
 set hub on outer edge of sharp bank or  
 sea wall 10. ft from water edge - still  
 rocky shore. Then follow along East  
 side of sharp edge of bank or seawall  
 10. ft West of water's edge.

at 400.80 = 1651.62 N. set hub on sharp  
 edge of bank 10. ft west of water  
 then along sharp bank and at

418.38 = 1669.20 set Hub on sharp  
 edge of sea wall 10. ft West of water

Here the lake turns N.W. and from  
 Hub 1669.20 N. we run N.  $14^{\circ}53'W$  258 ft  
 and set Hub

From Hub 1669.20 came hub lake set on  
 N bank of lake on line line 6. ft from  
 water in edge of cranberry bog

Reg @ Hub 1669.20 chain N  $14^{\circ}53'W$   
 @ 35. ft to sharp edge of seawall and  
 follow along stony beach 5 ft from water and  
 5 ft from seawall and at 258. intersect  
 hub on sand and stone beach 5 ft from

Jahn W Euro.



85

(42)

141-29

April 28-1917 Could

water and 5 ft from low bank <sup>201 ft</sup>Thence N  $22^{\circ} 28' 30''$  W

@ 20 ft water edge of water on flat sandy shore

@ 60 ft in edge of water 25 ft from foot of hill

@ 141. set hub on low point coming up from the S. Hub sets 5" from water. Low shore sloping up to the South

Thence N  $60^{\circ} 47' W$  at 20 ft brush water edge. at 40 ft leave edge of water.

at 74.80 set hub in marsh at water edge

Marshy bog runs S 100 feet

Thence N  $5^{\circ} 19' 20'' E$  following an edge of water 103.70 ft to Hub 5 ft Wof water Thence N  $36^{\circ} 47' E$  @ 55 ft W <sup>water edge</sup>  
113.30 ft to Hub 5 ft from waterand 20 ft E of west end of swamp that bears about N  $40^{\circ} E$  Thence S  $77^{\circ} 27' E$ 111 ft to Hub on line over which I set transit. Then as a check focus telescope North on line IM and the hub I just left bears N  $77^{\circ} 28' W$  (Guess this was some check - only one number off!!)

Thence North along line line

at 240 LV bog. bears N  $E \times S W$ 

at 343.70 intersect IM

John W. Cress

April 28-1917 Cont'd

We pull up the wood hob on the N. shore of Lake on line 343.70 ft So of I.M. at 1/16 in center of East half of sec 18- and put in its place an Iron Man- being 2x48" boiler tube driven half its length into the ground. and from here North we set 4 oak hubs along the line being one hub about every hundred feet. The bog appears to be solid and 4 feet above the water except that there is a natural ditch along the west side. Bog is about 200 feet wide at the lake. 300 ft long N & S and 125 ft wide in Cen.

We drive a row of oak hubs along the line Sec line bet Secs 18 & 19.

141-29 near Askins house which sets feet south of the line about east of the iron 1/4 cor bet 18 & 19.

Quit for night. Still playing with Askins and working for him

Sleet & snow begins to fall about bed time

John W. Curo



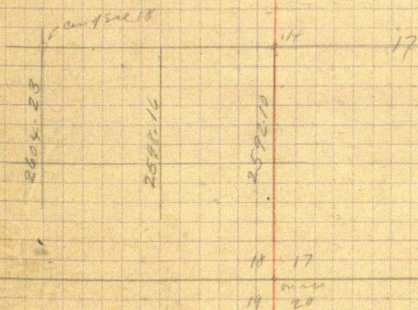


45

14-29

88

Apr 29-1917 Could

North and West of edge of  
bank or sea wallBts Viz N.P.  $20^{\circ} 57' 30''$  E  $4.00$  ft $14^{\circ} 5' 30''$  W  $12.20$ I work alone in setting this I.M.  
but do not get it moundHkins and I will mound it  
later. Truster took me across an  
arm of the lake in an old scow  
and I shot at loons while I set  
the corner and we wahl home  
together. Still with Hkins

In Aug 20 18. the NW angle of the N.P.S.  
line line with E & W random road  
 $89^{\circ} 40' = 0^{\circ} 20'$  to L. of N.

John W. Curo





April 30-1917 Contd

Note: As the iron monument we have set for the N. 1/4 bet secs 19<sup>th</sup> and 20<sup>th</sup> corner 37.05 feet North of the center of the new E & W road which runs a mile west to the 1/4 corner, there would be a strip of land 4.05 feet wide on the East end between the NE 1/4 of NE 1/4 Sec 19-141-29 and the road and as Mr. Johnson owns this "forty" and would like to know how far west this wedge shaped piece of land would run to cut him off from the road I make a rough estimate as follows:

1<sup>st</sup> I assume that the road runs straight West a mile to the 1/4

2<sup>nd</sup> I assume the length of the total mile to be the same length as the North boundary of sec 19 which is 5225.17 feet

Figuring thus the result is:

Sine = .00709061 Dividing 33.00 by

709061 gives 4654.04 being the number of feet East where the line would run out leaving the strip 571.13 ft long

Round  
571.13

John W. Carr



April 30-1917

At the iron N  $\frac{1}{4}$  cor bet 19 and 20  
we take the following bearings:

Tam 4  $386^{\circ}E$  2.40 ft

Tam 6  $S 17^{\circ}E$  17.95 ft (This was marked by Kearsy)

Fishers and Cues meet

Mr Cassius H. Case with his horse  
starting for Walker and as we want  
Mr Case for a witness to the  $\frac{1}{4}$  cor bet  
19 & 20 he goes with us and points  
out what he says is the old  
original U.S.  $\frac{1}{4}$  cor post at the S  
end of a line of new fence posts  
No wire. Mr Case say this post has  
stood here at least for the past 8 years  
and longer he also shows us one of  
the old Bearing lines.

U.S. poles call for. "St. B. @ 3."

Maple 12  $S 82^{\circ}E$  17.25 = 11.22 ft

" 10  $S 4^{\circ}W$  10 " = 6.60 "

We find the root of the old SW stump  
and the stump of the SE lies under a  
brush pile and they check out for  
course and distance.

We take new BTS. 0 is

Dead Balsam 10" N  $75^{\circ}W$  8.10 ft

Jahm W. Cues

April 30-1917 Contd

green White Pine trees 10 inch diam. bear  
S 41° W 35.75 feet to face of trees

The white Pine appears to have been marked  
for a new B.T. within the last ten years.  
Probably marked by Kemp.

As to the Fractional E 1/2 of the SE 1/4  
of Sec 18-141-29 is all in Pine Lake  
receiving a thin strip of land along the  
S. West edge and another block of land  
along the North end we get the  
acreage of the thin strip along the  
SW corner by chaining East to the  
lake shore which is quite even and  
uniform.

We begin at the E 1/4 cor bet 18 and 19.  
at <sup>lake</sup> 300 N the lake lies East 238 ft  
at <sup>lake</sup> 600 N " " " 202  
" <sup>lake</sup> 900 " " " 181

Chained from line N to line

John W Curo



136-29  
135-29

94

①  
May 1-1917- Tuesday

Half day in Walker with Hunt and  
Jensen in the office. Look up field  
notes of 135-29 for the survey of  
Hunt Lot No 3 of Sec 4-T135  
Rg 29. Cass Co. Contains 37.75 Acres  
U.S. survey. Filed on as a homestead  
about 60. days ago by John Alfred  
Lundeen of Mpls wife and two small  
boys

Mr Lundeen cannot find his  
lines and particularly wants to  
know if he gets a certain spring  
situated on the upper end of Upper  
Hull Lake and on the main stage  
road

May 2nd 1917 Wed

Lv Walker 9-35 via M & T Ry. Arr  
Pegquet 10-58 A.M. RR fare 80¢?

Meet Jim Ingram and Mr Lundeen  
Mr and Mrs Lundeen takes me in  
Auto with

owner & driver of car. we break down  
1-3/4 miles from Pegquet and get  
Mr \_\_\_\_\_ and

John W. Curo

95

②

136-29

135-29

May 2nd 1917 cont'd Lundgren Survey  
 his team to take us on line to Co.  
 of 5-6-7-8- 135-29 where we find an  
 I.M. set by Dep. Co. Surveyor E.B. Horst for  
 the line corner where a graded road runs  
 E & W and South.

We find some of the old HS-BTS here  
 but do not take time to check up on the INC  
 but run a compass line half a mile East  
 and look for the 14 but see 5 & 8 - but

do not find it then drive to the NE Co.  
 of sec 4 - where Wm McDonald  
 tells us all the BTS are gone.

We drive a mile East to the NE Co. of  
 8-135-29 and find two old stakes and  
 stumps of old BTS. Mr McDonald says  
 one of these stakes was set by W.H. Hallist  
 and the other by Louis Knudsen both  
 surveyors. We will find out which is  
 right in the morning.

Drive back to Piquet Over night with  
 Hunger proprietors of  
 Hotel

John W. Curo



(3)

136-29

135-29

Lundeen Survey 96.

May 3<sup>rd</sup> 1917, Thursday

Lundeen - with his wife and two boys  
move their H.H. goods to a house near their  
land - Roy Anderson and his wife takes  
Care - with Andy Johnson and Albert

Schmidt of Pequet to the NE cor. of sec 3.

T 135-29 This is the corner to sec 3

2-3-34 and 35 bet Taps 135 and 136. R<sub>2</sub> 29  
Crow Wing County where U.S. males call for  
a post and the following bearing trees:

Pine 12' N 57° E 66. LK = 43.56 feet  
" 30' N 47° W 50. " = 33.00 "  
Tern 12' S 71° E 53. " = 34.98 "  
" 10' S 88° W 79. " = 52.14 "

We find the stumps of all four bearing trees  
the NW stump being plainly marked

All stumps check almost perfect with an  
old stake previously set by Mr. W.H. Hallist

The distance between the SE & NW stumps  
being 0.20 of a foot too short and the  
distance bet the NE & SW stumps being 0.30  
of a foot too long checked from the face of  
where the B.T. marker came.

I repeated the measurement and  
set a stake 3x36 inch for true cor  
after which the old B.T.S. stand as follows:  
@ 8°30' N or

John W. Criss

97

④

135-29  
136-29  
Lundene SurveyMay 3<sup>rd</sup> 1917 Continued

old pine stump 12" N 56° E

" " 30" N 44° W

" Tarn " 12 S 69° E

" " " 10 S 70° W

We mark following new BTS.

Tamarac 4" N 42° 40' E 30.40 ft

" 3" S 62° 50' E 18.80 ft 8° 30' S

1. flat spot at base

An old post being a cross arm from a telephone pole and evidently set for the corner by Mr W H Hallett as it bears his private scribe mark. It sets NW half foot.

A stake and small iron  $\frac{3}{4}$  inch gas pipe rod sets West 13.20 feet but this iron is not the corner.

Start transit line west @ 8° 30' var. then transit telescope East to cen of M & I R R track from which we chain West track cen on top of high fill using plumb line. Curo and Johnson chaining.

@ 20. track cen. @ 37. foot of fill enter swamp. @ 81.20 cen of transit over sea corner in low wet land

From the sea corner chain West between sea 3 and 34. - 135-136-29 @ 8° 30'

John W Curo



⑤ Lunden Seaway 98

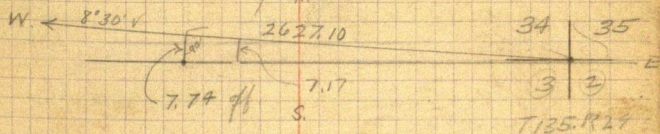
May 3rd 1917 Cont'd

135-29  
136-29

@ 240 W. to swamp NW of the noted "sink hole" on the M & I RR. @ 300 set stake about 575 enter swamp. 600 stake in swamp. 825 L. swamp: 870 set hub in Jack pine 900 stake. 1087.30 Hub. 1175 enter swamp: 1200 stake 1350 L. swamp 1500 stake: @ 1797.70 set transit on double center point marked by two matches from which @ 90° to random the center of the Chippewagon.

Bost's house bears 1° 43' W about 800 feet distant: @ 1800 stake: 1896.70 set hub: 2065.90 Hub: 2100 stake: 2400 stake 2432.70 Hub: at 2627.10 West the 1/4 corner between Deer 3 and 34.

sets South 7.74 feet



Correction = .002946 of a foot South for each foot West  
To correct back:

Hub 2627.10 W. goes S 7.74  
" 2432.70 " " S 7.17  
" 2065.90 " " "

John W. Cress

99

① 135-24  
Landline Survey

May 3-1917 Cont'd

Hub 1806.70	W. goes S	ft	
11313.55	W " S	3,87	1E 1/16 on bet Sec " Tot 3 and 34
1087.30	W " S		
870.00	W " S		

At the  $\frac{1}{4}$  corner between Sections 3. and 34. between Twp 135 R 29 and 136-29 US notes call for a post and the following bearing lines:

Pine 7" N 5° W 45 Lks = 29.70 ft  
 " 5" S 35° E 10 " = 64.60 "

We find both lines standing dead but plainly marked from which we set the point and drive a 3X3X12 inch hub with tick in corner for the line  $\frac{1}{4}$  corner. We find the old post lying on the ground at this point and stake it at the hub.

Curo using Hurley Transit double center 300 ft Chicago steel tape and plane table first class chain. Fredy Johnson flag and chain set out brush. Quiet for night. Leave tools with Wm.

McDonald lines on NE  $\frac{1}{4}$  of NE  $\frac{1}{4}$

Sec 4-135-29. Johnson & Schmidt quit and walk into Pequot. Curo gets supper with Landene then walks to Pequot. Stop at Rangers and takes night train to Warren. John Wilson



# Time Sheet Lundeen Survey 1957-1956-29

May 1957

	1	2	3	4	5	6	7	8	9	10	11	12	13 <sup>sun</sup>	14	15	16	17	18	19	20
John W. Curo	0	1	1	0	0	0	0	1	1	1	1	1	1	1	1	1	1	1		
Expense	0	88 <sup>g</sup>	10 <sup>g</sup>	0	0	0	0	0	0	0	0	0	0	0	0	0	0	88 <sup>g</sup>		
John F. Lundeen	0	1/2 <sup>pr</sup>	0	0	0	0	0	1	1	1	1	1	1	1	1	1	1	1		
Roger W. Stiles	0	1/2 <sup>pr</sup>	0	0	0	0	0	0	0	0	0	0	0	0	0	0	0			
Mr. Cooper	0	1/2 <sup>pr</sup>	0	0	0	0	0	0	0	0	0	0	0	0	0	0	0			
Franky Johnson	0	0	1	0	0	0	0	0	0	0	0	0	0	0	0	0	0			
Al West Schmidt	0	0	1	0	0	0	0	0	0	0	0	0	0	0	0	0	0			
Ray Johnson & Huls	0	0	1/2 <sup>pr</sup>	0	0	0	0	0	0	0	0	0	0	0	0	0	0			
Wm. McClain & Huls	0	0	0	0	0	0	0	1	0	0	0	0	0	0	0	0	0			
Ernest Swift	0	0	0	0	0	0	0	0	AM 1/2	0	0	0	0	1	1	1	1			
Wm. V. Donald	0	0	0	0	0	0	0	0	1/2 <sup>pr</sup>	1	1	1	0	0	0	0	0			

101

(8)

135-29  
136-29

May 4-1917 Fri

Lundeen Sunday

Arose in Walker 3 am on  
early morning train from Pequot RR for 8<sup>00</sup>  
nearly missed my train at Pequot  
Kraeger never woke up and travelling  
man called me 5 minutes before  
train time

All day in Walker

May 5-1917 <sup>Sat</sup> Reed Alma + I by auto from  
Walker to "Sleeper farm" at Pine River  
Nell Scribner + auto Charles Scribner  
with her

May 6<sup>th</sup> 1917 Sunday

All day on our farm at Pine River

May 7-1917 Monday

Alma-Reed and I by auto from  
the farm to Jenkins Wm McClain + auto

May 8-1917 Tuesday

Alma-Baby and I go by auto  
Jenkins to Pequot thence to Upper  
Guil Lake to John Alfred Lundeen's  
John W Curo



9) Lundeen Survey 102  
135-136-29

May 8-1917 Cont'd

farm in sec 4-135-29 thence to  
1/4 bet sec 3 and 34 bet T 135-136  
R. 29 previously set by us over which  
I set transit

Then Conedging random line from  
Hub 2432.70 West we chain south 7.17  
feet and set hub and lock on true line  
on which I focus transit then  
transit the telescope and run West  
on a true line down from a line  
thru the NE Cor of sec 3 and the 1/4  
on N side

Caro Transitman assisted by Wm  
McClane Lundeen as men. all  
cut brush and set hubs but do  
not chain run almost half a mile  
and quit for night

McClane quits and goes back to  
Jenkins with his auto

We all got dinner with Lundeen  
Alm-Baby and I over night with  
Lundeen

John W. Curo

⑩ Lundeen Survey  
185-136-29-

May 9-1917 Wed

Cross-tieant & chain John Alfred  
Lundeen and his two boys  
Startly 10- Vernon & assisting as  
ox men Ernest Swift as  
chain & flag 300 ft Chi tape Gully  
transit Double center hubs & plant to  
chain

Begin @ 14<sup>th</sup> bet runs 3 and  
34 - back sight East on line line  
at cancelled hub N<sup>o</sup> 2432.70 and  
run West:

At 273.60 Hub. 300 stake 553.10 W. Hub  
1505.90 W. Hub. at 1544 main.

wagon road NE & SW This is the  
road that runs past McDonalds and  
John Bost's place and Easterly  
occurs M & I track to connect  
with N & S. roads there and should  
be straightened - laid out and  
improved or it is the only place  
to get Easterly. Between the lakes  
Continue West:

1663.00 Hub 150 feet East of pond and  
as pond is too deep to be chained  
we get distance across as follows  
John H. Curo



(11)

135-136-29 104  
Lundene Survey

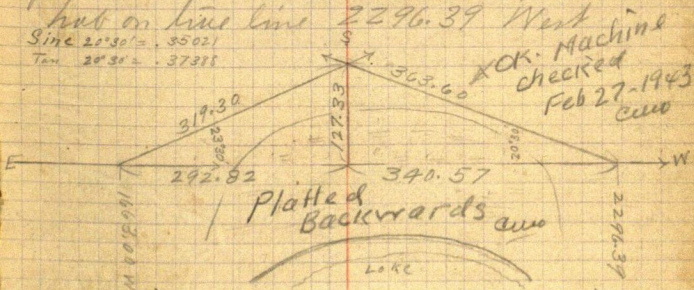
May 9-1917. Cont'd

From Hub 1663.00 on East side of Pond  
 cause a hub to be set on West side of  
 pond over which I set transit and  
 foresight East on hub 1663.00 then  
 turn telescope  $20^{\circ}30'$  to the Right  
 and run  $S 69^{\circ}30' E$  about 408 feet

Then with transit at Hub 1663.00  
 foresight West on hub over lake and  
 turn telescope to the Left  $23^{\circ}30'$  and  
 run  $S 66^{\circ}30' W$  319.30 ft intersecting  
 at a point 363.60 ft from hub over  
 lake

From hub 1663.00 run  $S 66^{\circ}30' W$  319.30  
 ft thence  $N 69^{\circ}30' W$  363.60 ft to  
 hub on line 2296.39 West

Sine  $20^{\circ}30' = .35021$   
 Tan  $20^{\circ}30' = .37388$



My wife and Mrs Lundene come out on line  
 at 10-30. We quit for dinner at 11-30.

Swift is furnished by and is working  
 John W. Curo

105

(12)

135-136-29

Lundene Survey

May 9-1917 Cont'd  
for Mr. McDonald.

P.M.

Mr. McDonald works in place of Swift  
Curo + McDonald chain perfect.

Reg @ Hub 2296.39 continue West  
3.61 to stake whd "2300 W" set in West  
wheel track of old road N + S which  
runs to Pegmat @ 2600 stake. 2640 Hub.  
Temporary corner to sec 4

3-4-33-34.. T 135-136" R 29" where  
U.S. notes call for a post and the following  
bearing lines

Pine	7 S 82° 30' W	230 LKS
"	8 N 76° W	206 "
"	8 S 73° E	245 "
"	6 N 22° E	40 "

Hub appears to be gone. We continue West  
At 2640.70 cross crooked wire fence  
which runs southerly 1/4 mile to  
old main crooked E + W road and  
northerly 84 feet to NE corner of fence  
Fence probably built two or three  
years ago. by McDonald

Mr. McDonald who owns and  
lives on the NE 1/4 of NE 1/4 of sec 4-  
135-29 says he has attempted to locate  
his NE corner but that the old 135

John W. Curo



13 Luncheon Sunny 106  
195-134-29

May 9-1917 Cont'd  
have never been found but that Mr W<sup>m</sup>  
H. Hallett a surveyor once run a line  
South from this corner along the County  
line which is now marked by a very  
crooked line of old fence posts  
which begin on the South side of the  
wagon road which is      feet South

We continue West:

at 2640.70 enter plowed field

At 2665 W. we are in line with some of the  
old fence post off to the South and at  
2670 West are in line with others the old  
fence posts appear to run SW and are  
too crooked to use in these notes.

At about 2875 cross wire fence  
runs NE & SW. L<sup>y</sup> field. @ 2900 stake

@ 2973.40 lock in 10. inch green pine  
stump - N. side; @ 3200 set stake about  
400 ft North of M<sup>c</sup>Donalds house

@ 3500 set stake @ 3688 cross main  
stage road to Pegmat - N + S. at 3700  
set stake at 3781.20<sup>W</sup> lock in oak stump

Thence down hill to creek. at 3900 Hub

3900 stake. 3900 stake 4000 stake 1 ft

East of East bank of Stony Brook. Quit  
for night

John W. Curo

May 10-1917

Curo and W. Donald still chaining  
perfect. P.B. ch & double embankments:

Continue West. At 4001. enter L. Bank of  
Mayo Brook. @ 4032. Rt Bank L. same.  
18 inches of water - swift current  
stony bottom - Pretty stream - Runs S.  
High Bluffs on each side.

at 4152. enter same Rt Bank - runs NE  
4185 L. same Left bank.

at 4258.20 Hat on point of meadow  
land coming from the North.

at 4290. set stake: 4293 enter Mayo  
Brook - Left bank - runs South

4355 L. Brook - Rt Bank - climb high bluff

at 4475. Hat - 4600 stake: 4847.40 Hat

on top of highest point: 4885. wire  
fence NE & SW almost E & W

4900 stake.

5250 enter river meadow. At 5280.

look for the 1/4 corner bet sec 4 and 33

T 135-136-29 where US notes call for

Port and BTS viz

Pine 75 57° E 1 1/2 Links  
Elm 12 N. 47° E 55 "

all are gone and are

continue West:

John W. Curo



(15)

135-136-29  
Lundun Survey

108

May 10-1917 Cont'd

Ht 5300 set hub in river meadow  
at 5382 enter river Left bank - dead  
water - runs South - mud bottom

Ht 5478 Rt Bk - L

5500 stake: 5535 to river bottom

5800 stake: 5821.60 Hub: 6100 Hub:

6188.10 Hub: 6200 stake: 6250 enter

dry swamp - green spruce &amp; Balsam

@ 6350 on Beaver Dam N 80° E and S 80° W

over very small creek - 1 ft wide

runs N. under Beaver Dam: Swamp  
drains North

Ht 6450 L dry swamp: 6500 stake

6549.90 Hub: 6600 stake:

6626.10 tack in West edge of green 10  
inch Jack pine stump: at 6650 enter  
same dry swamp - bears NE & SW

Quit for night My wife & baby with  
me at Lundun.

Mr Thomas A. Chapin Bx 63, Pequot  
Whim - a Carpenter calls at Lundun  
to inquire when we will have the lines  
so he can start work on Lundun's  
house. We can't tell.

John W. Caro

May 11-1917, Friday

Same crew - Crew - M<sup>rs</sup> Donald - Lundeen  
& Sons: continue West. at 6890

Cross Spring and creek in swamp. Creek 1 ft  
wide runs North. 6900 stake. 7100 stake.

Lo dig up. at 7200 Hat

at 7743.40 Hat on hill

Ht 7911.80

West the Corner to

Lines 4-5-32-33, T135-136, R29.

sets North - 90. degrees to random,  
50.75 feet.

Ht this point U.S. notes call for a port  
and B.T.S. Uig:

Pine	14" S	63 W	46	Links = 30.36	Feet
"	12" S	12 E	12	" = 7.92	"
"	10" N	30 W	96	" = 63.36	"
"	24" N	75 E	70	" = 46.20	"

We find the stump of the 10 inch pine plainly  
marked showing the "BT" spot near the  
base. We also find the stumps of the 14  
and 24 inch trees and from the top of  
the three stumps we chain to a perfect  
intersection all three check perfect  
absolute for course and distance  
@ 8°30' U & apt that the 10 inch stump  
stands 6 inches too far East.





May 11-1917 Cont'd

In order to plant our random line South  
bet Secs 4 and 5 T 135 R 29 at  $90^\circ$   
angle to the line North boundary of sec 4  
I set transit on Hub 7911.80 West <sup>on random</sup> Then  
sight East on Hub on random line  
at 7743.40 West, then turn telescope  
 $90^\circ$  degrees to the Right. Thence still to the  
Right  $0^\circ 22'$  and set small peg about 500  
feet South then transit telescope and  
look North and find any line of sight  
falls 0.32 of a foot East of the corner  
to sections 4-5-32-33.

I then walk 500 ft South to small peg  
from which I measure west 0.32 of a  
foot and set a point over which I  
place the transit back sight North  
on line sec 4 and run

South on random

bet Secs 4 and 5. at  $90^\circ$  to North Boundary  
of sec 4.

At 200 ft S enter swamp E to  
500 L same. 800 Hub 1070. S. set Hub  
1100 stake 1175 set stake. at 1225 enter  
small swamp @ 1350 L. Quit for night

John H. Carr



(9)

135.29

Lundon Survey 112

May 12-1917. Saturday.

Same crew continues South:

1400 stake: 1417.70 Hub: 1700 stake:

1884. Hub/900 stake: 2100 Hub

2400 Hub: 2560 Hub: 2760.60 Hub

2832.20 Hub

Ht 1511.40 + 1320.00 = 2831.40

set temporary 1/4 bet. sec. 4 and 5

T 135 R 29

Ht 2843.80 South the 1/4 sets

West 90° to random 62.28 Feet

At this point NS notes call for  
post and

N. Pine 30" N 39° W 9 Links = 5.94 feet

W " 10" N 70° E 27 " = 17.82 "

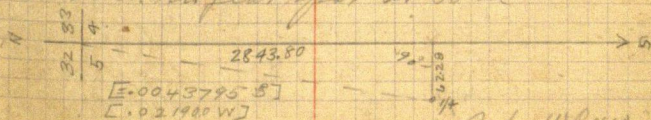
We find the stump of the 30 inch Pine  
plainly marked from which we set  
a 3x3x15 inch Oak hub and back  
for the true 1/4 bet sec. 4 and 5T 135. R 29 @ 8° 30' 1 set from face of  
B.T. mark. and put in new B.T.S.

with compass @ 8° 30' viz

Br Oak 6" N 3° E 36.95 Feet

Poplar 6" N 80° 30' W 47.75 "

to back in flat spot at base



John W. Cress

May 12-1917. Cont'd

Lundeen Survey

Beg @ Hub 2852.20 we continue  
 our random line South. Bat 475  
 @ 3193. Hub - 3200 stake: 3452 cross  
 main wagon road NE + SW - Pagnot  
 stage road: 3500 stake  
 4400 stake 4501 Hub  
 4700: 4800: stake  
 4850 enter swamp 5100 stake  
 5140 Ld swp: 5300 stake.

5315.60 set hub and quit for night

We had dinner at 11-30 Alvin and  
 baby gave to Pagnot with Mrs McDonald and  
 then on PM train to Pine River.

I am still with Lundeen

John W. Carr



(21)

135-29

114

Lundeen Quarry

May 13-1917. Sunday

I figure corrections all AM.  
and in P.M. Lundeen and I look for  
the corner to Sec 4

4, 5, 8, 9, T 135 R 29 where MS notes  
call for Post and

To corner	4" N 13° E	12 Lks =	7.92 Ft
" "	4" N 23° W	15 " =	9.90 "
Bul Fin	7 S (5) W	23 " =	15.18 "
" "	4 S 14° E	21 " =	13.86 "

We do not find them but cut line  
about 200 feet south. then take the  
whole outfit of tools and walk  
to the NE corner of Sec 4-135-29

where from random hub 2640 West.  
I chain East 2.73 feet to 2637.22  
West then North 16.92 at 90° to E x W  
random and set oak hub 3x3x15  
with lock in top for the true corner  
to sections 3, 4 33, 34 T 135 and 136

Rg 29 with new bearing line viz  
Jack Pine 14 inch S 44° 12' E 45.72  
feet to head of 8<sup>th</sup> west driven in flat  
spot at base

Jack pine 4 inch N 3° 15' E 18.98 ft  
to lock in flat spot at base  
lined with transit from line E x W  
top line about 8° 08' bear

John W. Carr

May 13-1917 Cont'd Lunden Survey

With transit on Hat 2637.27 W. on random line - focus telescope East on random line then turn  $90^\circ$  to the Right - Then still to the Right  $0.22'$  and cause point to be set in field about 500 feet South

Transit - telescope and look North and find my line of sight falls 0.11 of a foot East of the lock in sec corner - walk to point we have set 500 feet south from which we measure West 0.11 of a foot and set Hat on line random which runs South at  $90^\circ$  to line N. boundary of sec 4 where I set transit and back sight on line NE cor of sec 4 and run South - random bet secs 3 & 4.

Hat about 800 ft South and quit for night Wm McDonald came out and helped me 30 minutes to chain the above corrections.

Curo - Lunden and his two small sons work

John W Curo



(23)

135-29

116

May 14-1917 Monday Lumber Survey

Cars and Swift Ch + Mount Double can hats  
PB chain Lumber & 2 cars & men

Ran S. on random but 3 & 4.

@ 36. feet cross wire fence NW & SE - enter  
plowed field. Ht 224 L. field: 223.80  
cross wire fence about 35 feet west of  
SE Corner post (aced) at 236.50 end of  
main wagon road E & W

Ht 248.50 S. the NE cor post of another  
fence sets west about 7 feet (paced)  
at 300 set stake.

405 cross wire fence NW and SE  
enter field of Rye: at 533.30 Hub in  
Rye field: 600 stake: 900 stake in Rye  
@ 937 L. field 10 ft west of SE corner  
and 30 feet (paced) west of wire fence  
at 1025.20 Hub in brush land. Then  
Leave level land and start down hill.

@ 1100 stake: 1114 cross wire fence  
NE & SW 25 feet (paced) SW of SE cor post  
of fence: @ 1225 set stake enter N  
end of narrow slough - 50 feet wide  
@ 1475 L. same: @ 1525 set stake:  
@ 1700 S. we are 80 feet west of 5 acre  
cranberry bog: @ 1800 stake:

John N. Cunn

117

(24)

135-29  
Lundeen Survey

May 14-1917 Cont'd

@ 1919.30 Hub: at 1950 we are 200 feet

East of the North end of a 10 acre lake

@ 2028.50 set Hub (I cut the end off  
my left thumb with my knife cutting  
grass in trying to see the tachin hole)at 2100 set stake: at 2250 <sup>touch W end</sup> touch the  
East edge of a marsh - 25 feet east of  
edge of lake: @ 2400 stake:

2600 set stake and quit for dinner

(Eat dinner with Mr &amp; Mrs Wm)

Mr Donald: Lundeen eats lunch out  
on lawn.

P.M.

Continue South @ 2800 set stake

At 2860.44 set Hub Temp 1/4 in but 3 ft +

2970.90 Hub 3150 stake. 3325 Hub

3400 stake. 3700 stake. 3841.60 Hub

3888.20 Hub. 4050.40 set hub

40 feet East of and 50 ft N. of Lake  
and quit for night

At 1/4 but Sec 3 &amp; 4 T135-R29

No males call for sport and

Bk Pine 45 81° 30' E 47. LK<sub>2</sub> = 31.02 ft

" " 95 58° 30' W 71. " = 46.86 "

I am comparing and find W<sup>N</sup> 21.

John H. Cline



25

185-29

Lundeen Survey 118

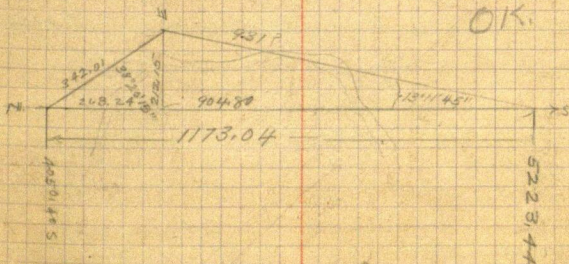
May 15-1917 Tuesday

Cano- Swift-Lundeen

Continue South between Lines 3 and 4-

From hub 3888.20 S. cause hub to be  
set South about  $\frac{1}{4}$  mile acrossLake. Then with transit at Hub  
4050.40 focus on Hub, looking South  
over lake, turn Left, angle reads from  
vernier "0"  $38^{\circ}20'30''$  to flag S.E.and with vernier "00" angle reads  
 $38^{\circ}20'$  and run  $538^{\circ}20'15''$  a distance  
of 342.01 feet to flagCarry transit to Hub over lake,  
focus telescope North across lake  
to Hub 4050.40 and turn to the Right  
looking N.E. on flag at hub 342.01Angle with vernier "0" reads  $13^{\circ}12'$   
and with vernier "00" angle reads  $13^{\circ}11'30''$   
 $= 13^{\circ}11'45''$ 

OK.



John W. Curo

119

26 135-29  
Lundin Survey

May 15 1917 Contd

$$\begin{aligned} \text{Sine } 38^{\circ}20'15'' &= .62030 \times 342.01 = 212.15 \text{ E} \\ \text{Cosine } 38^{\circ}20'15'' &= .78429 \times 342.01 = 268.24 \text{ S} \end{aligned}$$

$$\begin{aligned} \text{Tangent } 13^{\circ}11'45'' &= .23447 \\ \text{Co Tangent } 13^{\circ}11'45'' &= .204917 \quad 212.15 = 904.80 \end{aligned}$$

268.24 ft added to 904.80 ft = 1173.04 being  
distance across Lake added to  
4050.44 = 5223.44 ft south to Hub  
over lake.

Then a continue South

$$@ 5296.44 \text{ Hub} : @ 5344.94 \text{ Hub}$$

$$5515.84 \text{ Hub} @ 5628 \text{ main road NW E}$$

$$@ 5223.44 + 752.00 = 5975.44 \text{ Hub}$$

$$@ 5223.44 + 852.00 = 6075.44 \quad "$$

$$@ 5223.44 + 1189.20 = 6412.64 \text{ South at}$$

Hub 30 ft NE of edge of marsh about  
500 feet North of the water edge of  
the lake and near US M.C. N: 21

where US water call for port and the  
following bearing line:

$$\text{White Pine } 24 \text{ N } 0^{\circ}30' \text{ W } 787.6 \text{ Ks} = 519.42 \text{ ft}$$

$$\begin{aligned} \text{Sine of } 0^{\circ}30' &= .00873 \\ \text{Cosine } 0^{\circ}30' &= .99996 \end{aligned}$$

This would leave the bearing line feet  
North end feet West of the Meadow  
John W. Guro



27

135-29

120

Lundeen Quarry

May 15-1917 contd

corner. I find the old stub of the bearing has plainly marked but only a shell being badly burned and from the heart of this old B.T. I measure East with the flag pole 55? feet and set white birch flag.

Then with transit at hub 6412.643 the birch flag ft east of the old B.T. stub bears  $S 34^{\circ} E 255$  feet.

By figures at a point ft South, a flag set on the line see line ft East of this old stub would stand East ft

and at South, MCN=21 would be East feet

John W. Carr

121

28

135-29

May 16-1917 Wed

Lundeen Survey

Carr-Lundeen-Swift working

At the corner to Secs 3, 4, 9, 10-

135-29 US miles calls for post and

N.P. 15" N 58° 30' E 21. Lks = 13.86 feet

" " 4" N 45° 30' W 55 " = 36.30 "

" " 10" S 71° 30' E 72 " = 47.52 "

B.P. 7" S 41° W 13 " = 8.58 "

We find the little stump of the SE and NE trees both plainly marked and the root of the SW tree with part of the body all plainly marked from which we set the corner by flat chain from face of the B.T. marks and the measurements all check perfect. (couldn't be more perfect) after which the old stump stand as follows @ 8° 30' N about.

N.P. stump	10" S 72° 30' E	47.52	Feet
" "	15" N 55° E	13.86	"
B.P. "	75 40° W	8.58	"

The N.W. tree is gone

We marked new B.T.s as follows

Green Norway Pine 18" N 41° 12' W 76.71 feet to 20 ft spike driven in flat spot at base

Green Jack Pine 4" N 52° 11' E 84.32 Ft to top head in flat spot at base

Green Pine 7" S 64° 50' W 107.31 Ft to 6 ft Nuth in flat spot at base

Poplar 4' S 87° 56' E 80.80 Ft to top all @ 8° 30' N

John W. Carr



(29) 135-29  
Lundeen Sming 122

May 16-1917

At a point on our random Line  
5530.24 feet South the corner to  
sec 3, 4-9-10, 135-29, sets East  
159.65 Ft @  $90^\circ$  to random line

The U.S. Chain calls for 5500.44  
and is 5530.24 ft my chain via  
random line = 29.80 feet longer  
than U.S. Chain

### Correction

The Correction of this line on the random  
would be each corner goes  
South .0054177 of a foot so for each  
foot South and

.02887 of a foot East for each foot South

Hub 5530.24 goes East 159.65  
5344.94 goes E

5296.44 S. goes E

5223.44 S " E

Temp S  $\frac{1}{16}$  bet Secs 3 & 4 135-29  
Corner in the lake

and at Temp pt 4180.44 S.

the ~~S~~ <sup>N</sup> Cor goes South ft  
to S then East

ft to point in lake for S.  $\frac{1}{16}$  Cor

Hub 4050.40 S goes East

John W. Cull

123

(30)

135.29

May 16-1917 Cont'd

Lundeen Survey

Conductor Continued

Figured but

Secs 3 &amp; 4 - 135.29

Ht 4050.40 S gauge E

" 3888.20 S. " E

" 3841.60 " " E

" 3325.01 " " E

" 2970.90 " " E

Ht Ht 2860.44 South  
being the Temporary  $\frac{1}{4}$  cor bet 3 and 4  
on chain South 15.50 Ft To

2875.94 South then

(East) 83.03 Feet where we  
set a 3x3x24 inch Burr oak  
hut and tack for the true  $\frac{1}{4}$  corner  
between Sec 3 and 4 T 135. R 29  
with new Bearings as follows

Jack Pine 10 inch S  $28^{\circ}05'$  W 42.10Ft 1. <sup>200</sup> spike in flat spot at base

We drive @ 20 d spike in flat  
spot at base of another 10 inch Jack  
Pine which has been drilled  
and marked "1/4 S 13T"

Spike head bears N  $71^{\circ}$  E 82.43 ft

This line was marked 22 years ago  
and is not the old U.S. 13T.

John W. Cress





125

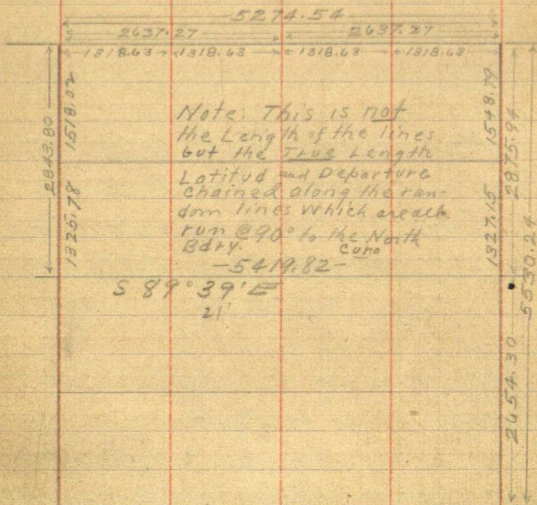
(32)

135-29

May 16-1917 Cont'd

Lundeen Survey

Sec 4-T135 R29

NW cor  
Sec 4.1325.78  
1518.02  
2843.80

33.24

Correction =

.0043795' of foot S. for each F.S.

.021900' of foot W. for each F.S.

Hub. 2760.60 gals W 60.46'

2560. " W 56.06'

2400 " W 52.56'

2100 " W 45.99'

1844 " W 41.26'

1700 " W 37.23'

02.29

1518.02 gals W. 33.24.

1417.70 gals W

10.70 " W

.021900 1'15'

John W. Curo



May 16-1917 Contd

32 135-29

126

Lundeen Survey

N.

5, 4,

4, 3,

5352.50

$0^{\circ}19'44''$

30.77

$.0057487 =$   
Tan  $= 0^{\circ}19'44''$

127

(34)

135-29

Lundeen Survey

May 17-1917 Thurs

Cues - Swift-Lundeen

Going to Hub 1417.70 So of NW Cor  
 of sec 4-135-29 we chain South 100.32  
 to 1518.02 South then turn  $90^\circ$  and  
 chain West 33.24 feet where we set  
 a  $3 \times 3 \times 20$  inch adk hub and look for  
 the line

North  $\frac{1}{16}$  Corner Bet Secs 4<sup>th</sup> and 5<sup>th</sup>  
 with new BTs as follows

N  $\frac{1}{16}$   
 Ties  
 V

Poplar  $8^\circ N 16^\circ 41' E$  17.90 ft

Poplar  $68^\circ 84' 45' E$  39.51 "

Look driven in flat spot at base

Then with Transit - at Hub 1518.02  
 on random-focus telescope North  
 on random and turn

Right  $90^\circ$  Thence turn  $0^\circ 19' 44''$   
 still further to Right and cause  
 hub to be set about 500 ft East

Then transit telescope and  
 look West line of right falls

0.20 of aft North of the  $\frac{1}{16}$  corner

Walk 500 ft East to hub or

measure 0.20 of aft south and

set point on line E & W north

$\frac{1}{16}$  line over which I set transit

John W Cues



(35) 135-29 128  
Lundeen Survey

May 17-1917 could  
back right West on true  $\frac{1}{16}$  corner and  
run East along the North  $\frac{1}{16}$  line of  
Sec 4-135-29

At 125 enter marsh: at 275 Ld  
@ 300 stake: 341 Hub 540 Hub 600 stake  
550 top of peak where transit sets  
@ 567-60 Hub: 805 Hub. 835 stake  
1050 touch head of small marsh  
1135 stake: 1200 E Hub: 1320 E Hub  
1400 set Hub and quit for dinner  
all take dinner with Mrs Lundeen  
P.M.

We correct the West boundary of Gout  
Lot 3. of Sec 4-135-29. drive hubs  
and tall stakes marked True Section  
Hub 2760.60 West 60.46

2560	"	56.06
2400	"	52.56
2100	"	45.99
1884	"	41.26
1700	"	37.23

[Correction =  
.02190 West]

John W. Curo

129

135-29  
36 Lundeen Survey

May 17-1917.

To run East on the center  
line of Sec 4-135-29 I set over  
random hub 2843.88 South  
which is 62.28 ft East of the  $\frac{1}{4}$  Cor  
ner Secs 4 and 5 @  $90^\circ$  to random

Focus thes scope North on random  
then turn Right  $90^\circ$ . Then shift  
farther to the right  $0^\circ 20' 22'' = 90^\circ 20' 22''$   
R. and set one hub about 100 ft East  
and another hub 1100 ft East

Then transit the scope and looking  
West any line of sight falls .37 of  
a foot North of the block in the  $\frac{1}{4}$   
corner hub.

At temporary hub 100' East I  
measure 0.37 of a foot South and  
set hub on true line over which I  
set the transit and at temp Hub  
1100 E. I measure south 0.37 of a  
foot and set flag then run a line  
of Hubs East along the true  
center line of sec 4-

at  $960$ .

cross main slope and  
NE & SW  $1092.50$  and  $1109.60$  Hub on high bank  
@  $1159$ . L.H. @ 1166 into water on west



May 17-1917 Cont'd

37 135-29 130  
Lundeen Survey

side of Upper Gull Lake.

To look for the corner to Secs  
4-5-8-9-T135 R/29 we walk to  
the iron monument a mile West and  
Chain the M.S. mile East and look  
for old B.T.S.

M.S. notes call for post and

Turn 4" N 13° E 12 LKS = 7.92 Ft

" 4" N 23° W 15 " =

B. Fir 7 S 52° W 23 " =

" 4 S 14° E 21 " =

Swift starts home 5:30 PM.

Lundeen and I hunt till nearly  
dark but do not find the corner.

I walk East to Gull Lake  
and look for M.C. No 40. M.S. notes  
call for Post and

B. Ash 8" N 69 1/2° W 4 LKS = 2.64 Ft

Ash 10" S 14 1/2° E 24 " = 15.84 "

I find the S.E. ash down and  
drumily marked and pace West  
and find the measurement  
check well with the chain from  
the West. Over night with Lundeen

John W. Cress

May 18-1917

Curo-Lundeen and son Vernon  
go to the corner to Secs 4, 5, 8, 9 T135  
R29 and find the stumps of the  
old U.S. bearing trees  
standing not burned and  
very plainly marked we find  
the stumps of the other trees and  
all check for course and distance  
at 7° Var.

I set an iron section corner  
being I.M. 2 1/2 x 48 inch boiler tube  
driven or partly driven in the moss  
and ice for the four corner to  
Sections 4-5-8-9 T135-R29  
from which

Old Balsam Fir 7 inch stump being  
the original old U.S. bearing bears  
S 52° W 23 Links = 15.18 feet to face  
of figures which are very plain

New Bearing & measured by one Vig  
New B.T. Tom Stub 15" N 35° W 24.95 FT  
to 20' spike in flat spot at base

14 inch White Pine Stump bearing  
S 23° 45' E 54.45 ft to nail in spot  
at base. White Birch tree - the only



39 135-29 132  
Lundum Survey

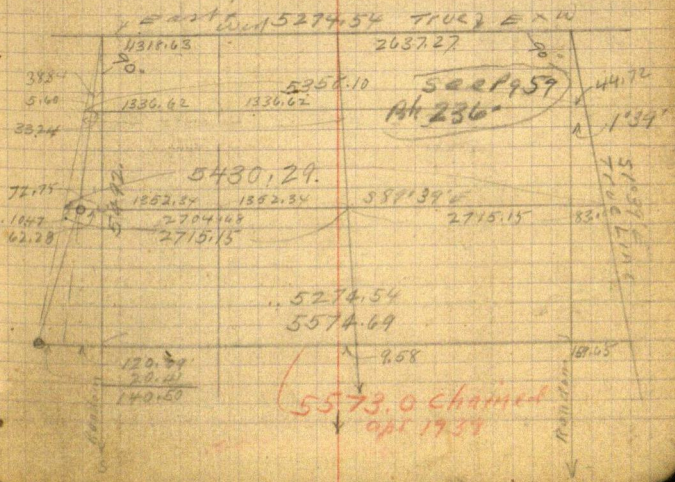
May 18-1917. Cont'd

one in right, being 3" diam bears  
S. 87° E 36.50 ft to small 2" nail in  
very small spot near base. all @ 7° W

HT Hub 5315.60 so on random  
we run South 168.20 ft and set small  
hub being 5483.80 Ft S. over which  
I set the transit and run West  
140.50 ft to a point 8.20 ft North of the  
Iron corner to nos 4-5-8-9.

HT 5492. South the cor to 5678.  
sets West. 140.50 feet.  
This corner into 8.20 ft line far South  
and crooks West 20.46 feet.

Terminal Corner W.B. by .0025583 W



133

(40)

May 18-1917

N. Line runs E & W

E. Line runs S

W. Line runs S

From point to point

Cen line runs S

N & S Cen line former 2715.15 FT W of  $\frac{1}{4}$  on E. side

" " " " " 2704.68 FT E. of  $\frac{1}{4}$  on W side

The South side of the NW  $\frac{1}{4}$  of Sec

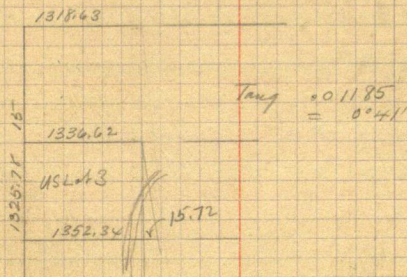
4. is 2704.68

The North side of the NW  $\frac{1}{4}$  of sec 4

is 2637.27.

Diff 67.41.





set transition from No. 1336.62 E  
 set vernier at 20' to K 14 90° back sight  
 West. Transit held square and  
 telescope plumb to read 90° - 4' 20"  
 then turn R 40° looking W  
 then turn R 1' 15" to be parallel with  
 West edge of sec.  
 then turn 0° 41' L and run S.  
 long 50' 34" W

Cham South along East side of Mount Lot 3.  
 @ 233.50 Hub 300 Meters: 377.70 top of Parish  
 hill thence down hill: @ 475 we are  
 36.00 15' West of the spring trough  
 and 28.50 W. of Barrel in Spring  
 Barrel

135

(42)

@ 546.81 road cor 568 oak Hub  
 5 ft from edge of road

@ 580. Ls Sec wall: @ 601' intersect  
 walrus edge

At NE. Cor Lot 3- being cor of  
 NW 1/4 of Sec 4 - 135-29 oak Hub  
 Bts. viz

Bear 4 inch S  $S 29^{\circ} 08' W$  51.10 FT  
 JP 63  $89^{\circ} 35' E$  66.60 ft

From Hub in road Road  
 bears N  $35^{\circ} E$  for 100 ft then turns  
 E or S and

From same Hub road bears  
 S  $33^{\circ} 30' W$  for 100 ft then E or S



Feb. 11-1918.

E. B. Horst leaves Walker.  
 Working for J. L. Bairdon.  
 Brainerd, Minn. Bairdon  
 meets Horst at Brainerd and  
 we drive to Bairdon's place  
 in government lot 3,  
 section 18, Township 134,  
 Rge. 29 and begin survey  
 of lot 3 by looking for  
 meander corner no. 54  
 where U. S. notes call  
 for Oak 8 N. 45° E. 28'  
 Aspen 8 S. 82° W. 8'. These  
 are all gone and we  
 look for M. C. 5-5  
 where U. S. notes call for  
 Pine 14 S. 2° E. 30', Pine 18  
 S. 81° W. 30'. These are also  
 gone.

E. B. Horst.

Feb. 12, 1918.

C. B. Huret and J. L. Rairdon  
take outfit and walk to  
corner of sections 25-30-  
31-36, Twp. 23 4 R. 24-30,  
where U. S. notes call for  
Pine 8 N. 25° W. 8, Pine 8 N. 70  
E. 15, Pine 8 S. 81° E. 7, Pine  
7 S. 53° W. 24. We find  
the S. E. tree standing  
and plainly marked, the  
S. W. tree down and badly  
burned but still bearing  
U. S. scribe marks. From  
these we set a 3 x 3 x 36"  
wood post at 9° 45' Mag Var.  
and mark the following  
bearing tree Jack Pine 10  
N. 40° W. 84 ft. I set tran-  
sit over corner and run  
reg. line N. at 9° 45' Var.  
At 136 ft. N. set hub.  
P. M. we are assisted by  
Harry Vansickle.



at 1570. N cross old road S. 70 E.

" 1880.5 " tack in J.P. stump.

" 3550.0 snow hut S. of lake  
on high bluff.

" 3718 stake on S. shore of  
Gull Lake.

" 10738.0 N. N. shore of Gull  
lake nail in snow hut.  
with following bearings  
R. Oak 6 N 10 E 13.7 ft.  
W. Oak 5 N 40 W 19.5 ft.

at 11028.5 N. snow hut on Lot 8.

" 11388.0 N. seawall Gull lake  
set point W. P. 10 bears N.E. 1.2 ft

" 11488.0 Highwater mark

" 13200.0 N. offset W. 372.8 ft  
at 90° angle backsight E to

point and turn N.E. angle  
91°43' and run N. on Todd's line

at sta 2703 N. intersect I.M.

set by Harry Todd. to which  
I mark the following bearings

Pop. 4 N 37°33' E 30.3 ft

Birch 10 N 48°10' W 19.0 ft

J Pine 12 S. 72°20' E 25.0 ft.

Feb. 12. 1916

Feb. 13-1916

553

We return to S side of Govt  
 Lot 3. to Hub 10738.0 N. and  
 Chain W. 305.9 ft. to true Rye  
 line. Backsight E. on hub  
 10738.0 N. Turn N.E. angle  
 $91^{\circ}38'$ . Run N. 62.9 ft. to true  
 range line and set M.C. no. 54  
 with following bearing trees:  
 Oak to N.  $70^{\circ}20'$ . 33.1 ft. Oak to N  $89^{\circ}$   
 E 17.1 ft. We return to hub  
 10738.0 ft N. on random line  
 sight south on random line  
 turn S. E. angle  $82^{\circ}53'$  or  
 S.  $81^{\circ}15'$  E. 300 ft. Thence  
 south  $79^{\circ}55'$  E. 237 ft. to point  
 of beginning E.B. Hoist.



Feb. 14, 1918.

We are unable to work on account of snow and wind.

Feb. 15, 1918.

Horst and Rairdon begin at place of beginning on S. shore of Set 3. Run N.  $26^{\circ} 5'$  E. 18 ft. Set  $1 \times 36''$  iron monument. Continue N. at 166.8 ft. Set  $1 \times 36''$  iron monument. Continue N. at 200 ft. Hw. mark on Gull Lake, thence S.  $48^{\circ}$  E. along lake shore 369.2 ft. thence N.  $79^{\circ} 35'$  W. along lake shore 371 ft. to place of beginning. Rairdon takes Horst and outfit to Brainerd and Horst returns to Walker. Charges \$22.72

E. B. Horst.

143

Fence

Mag.

N.  $48^{\circ}15'E$  212.7'N.  $48^{\circ}$ N.  $38^{\circ}45'E$  676.0N.  $30^{\circ}30'$ 51.0

727.0

N.  $12^{\circ}E$ 

3

N.  $4^{\circ}E$ 

142'

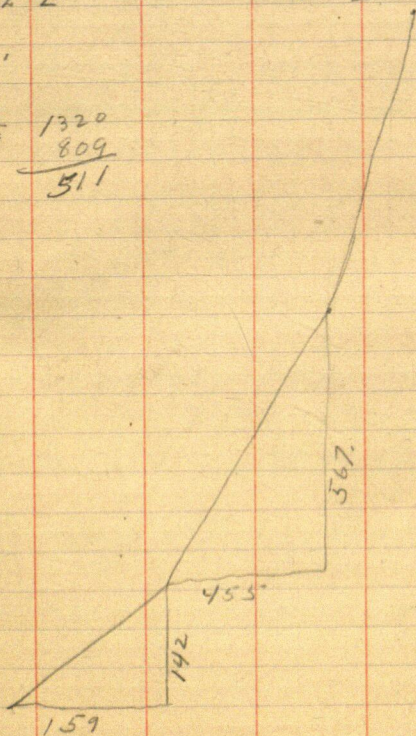
567

809

1320

809

511





$$\begin{array}{r}
 66588 \\
 \underline{213} \\
 199764 \\
 66588 \\
 \underline{133176} \\
 141,83244
 \end{array}$$

$$\begin{array}{r}
 74606 - 5 - 3 \\
 \underline{213 - 6} \\
 223818 \\
 74606 \\
 \underline{149212} \\
 158,91078 \checkmark
 \end{array}$$

$$\begin{array}{r}
 77988 - 3 \\
 \underline{727 - 7} \\
 545916 \\
 155976 \\
 \underline{545916} \\
 56697276
 \end{array}$$

$$\begin{array}{r}
 62592 - 6 \\
 \underline{727 - 7 - 5} \\
 438144 \\
 125184 \\
 \underline{438144} \\
 455,04384
 \end{array}$$

97815

20791

$$\begin{array}{r}
 \underline{97815} \quad \underline{52} \\
 511,000 \\
 \underline{489075} \\
 219230 \\
 \underline{195630}
 \end{array}$$

37	52	
<u>6</u>	<u>6</u>	
222	318	27
<u>222</u>	<u>318</u>	<u>6</u>
2442	3498	162
	13	162
808	31	2047782
<u>100</u>	<u>6</u>	
6318	18638	2680
	12	6.6
20.48	6247.0	203.4
	48.8	6700
2649.6	25248.2	462.0
<u>2023.1</u>	<u>2024.1</u>	686
26.5	5297.6	41.8
6272.7	484	452.0
2096.5	5248.6	
<u>2023.1</u>	<u>686</u>	
13.25	3300	
	526	
	561.00	

2049.6  
2599.0  
 5248.6

92  
63  
 29

734  
44  
 7

92  
63  
 29