

No 1.

A. W. Moulster,

Deputy C. Surveyor,

Cass Co. & A. H. R. R.,

Minnesota

49.

A. W. Moulster

Line River, 1710

LINE-----

LOC'N BY PLACE OR STA-----

PREL'Y OR LOC'N-----

CLASS OF NOTES-----

ENG'R IN CHARGE-----

DATES-----

48782

FIELD BOOK

FORM 200

Folio 12mo. $4\frac{1}{8} \times 7\frac{3}{16}$

===== 80 Leaves =====

Brown, Treacy & Sperry Co.

Manufacturing Stationers

Fifth and Minnesota Sts.

ST. PAUL, MINN.

#195
#209

Contents -

Runway Dec 5- 141-30, 1-144
 Dec 31- 140-28, 18-20
 Dec 36 140-29, 15-41
 Dec 60-7 = 133-29 44-51
 Dec 17- 133-28 42-43
 Dec 4 134-30-53
 Dec 3 134-30
 Dec 25 138-27-85-
 Dec 26 " "

State Road 137-30-100-133
 " " Dec 31 138-31-134-139
 Dec 3- 134-30-141-146
 County Road Dec 9- 134-30-146-155
 140-30 Pillager 155
 25-26 138-30

Monday - March 6 - 1911.

Went to Walker in P.M.

Tuesday March 7 - 1911.

Worked for Curson Record Book all day.

Wednesday - March 8 - 1911.

Left Walker on 9:38 train (A.M.)
Arrived at State Sanatorium
at 9:40. Walked out to Frank
Beck's place, arriving at 11:15.

In P.M. we started to
survey.

Ernest Beard, foreman and
chainman.

At men - Frank Beck, Archie
McTear and R. Holmerson, all
residents. Going to the 1/4 post
between Sections 4 and 5, 141-30.
I found an old cruiser's stake
plainly marked $1/4$, Sec. 4, and
 $1/4$, Sec. 5. Also notice call for -
RWC 16 - 1P 8775E23 - 1518 feet
1P 10714E76 = 5016 feet. I find
the 75° B.T., the T₀ plainly shown
but the T₁ turned. The trace of the
14° B.T. setting transit on

1911
#196

Record

Dec. 5-141-30

the string, set a small post
by course and measurement,
course turned from $7^{\circ}40'$ Nor. The
cruciform stake then stands
fully 100 feet East (and N) of my
 $\frac{1}{4}$ post. Setting transit on
 $\frac{1}{4}$ post & run with on $7^{\circ}40'$ Nor.
200 paces in bog
400 " " "
600 enter bog of water
700 leave same
1100 Pine in bog
1000 leave bog
1200 Pine on hill
1242.10 hub on hill
1320 - hub - Swamp. $\frac{1}{16}$ cor.
1400 Pine
1600 "
1800 "
2000 "
2200 "
2400 " on east side of hill
2499.9 hub on hill
2640 Swamp center of section
2800 Pine
3000 " in small bog

Recon

Sun. 5 -

14130

8

3200 Pin on knoll

3400 Pin

3600 " on knoll.

We then quit for day. I used
the following instruments,
- Heller and Brightly Transit,
in perfect adjustment, a 200
foot Chicago Steel Tape, an
8-foot flag pole, plumb-bob
used in rough places in chaining,
and the "double center check" on
hubs.

Thurs. March 9 - 1911

Continuing yesterday's line.

Ernest Beard - ch. man + flagman

Arthur McZur

Frank Burk

Edwin Holmerson

} Axmen

3800 Pin

3894 Hub

3960 Hub - Turnp. 1/16 corner

4200 Enter small bog

4400 Pin leave " "

4600 Pin

4800 "

Record

E + W. Center Line, Dec. 5-14-36

5000 Pm

5200

$\frac{1}{4}$ post, between 5 + 6, Gov. notes
call for - S to R at 6

Calc $14787W49 = 32.34$ feet.

" $14748256 = 36.96$ "

I find the N E B.T. plainly marked
B. No trace of N W bearing due.

Set a hub by course + measurement,
using $7640'$ N.E. Due $\frac{1}{4}$ cor.

Then stands 46.60 feet south
at 5359.65 feet West.

N + S. Center Line

Going to the $\frac{1}{4}$ post on the south
side of Dec. 5. Gov. notes call
for - N to R at 5

W P 20518W17 = 11.22 feet

W 22711W51 = 33.66 "

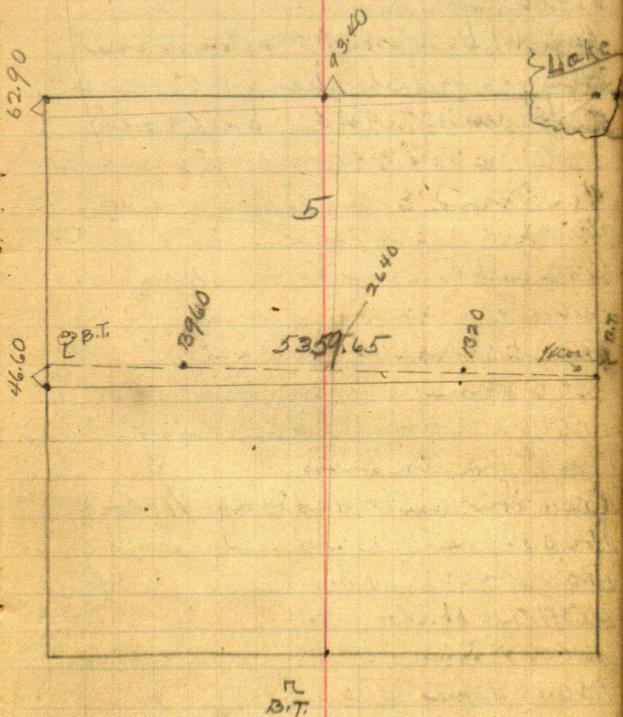
I find an old stake about $3\frac{1}{2} \times 3\frac{1}{2}$ in
4 ft. marked $\frac{1}{4}R5$, $\frac{1}{4}R8$, laying
down, being burned off at the

bottom. I find the R.W. W P
plainly blessed by the B.T. being
burned. I then set a hub by
course and measurement ($7640'$)

Record

141-30

Section 5, Twp. 141 N. R. 30 W., 5th P. M.



Plat showing random Lines.

671 + S. Centerline - Sec 5 - 141-30

putting a tack in the hub.
Putting machine on the hub &
find the NW WP stump, badly
burned but checking for course
and meas. Then turn north.

7142'

200 Pin

400 "

600 "

800 "

923.25 Hub

1000 Pin

1050 enter small tan. swp.

1200 pin in swp.

1320 Hub in " (Swp. 1/6 Cor.)

1400 Pin " "

1450 leave " "

1534.20 Hub

1600 Pin

1800 Pin

1850-1900 cross east end &
keep name.

2095.90 Sack in bog

2200 Pin

2400 "

2600 "

Record

do

14130

T

2640 Hub

at 2700.75 feet North, N + S center
line intersects E + W center line
at 2736.35 ft W.

2800 Pin

3000 "

3200 "

3400 "

3600 "

3800 "

4000 "

4072.20 Hub in corn field

4200 Pin

4400 "

4500 enter Sam. bog

4600 Pin in bog

4800 " " "

4950 leave "

5000 Pin

5200 "

5280 Hub

at 1/4 Cor. N. ridge 5' - 1500. not a call
for - maple
no trace of maple.

Revised

8 North Boundary of 5 141-30

Friday March 10-1911

Ernest Beard - ch. man flyman
Wm McEver, Frank Beck,
A. man.

At MC No 24 4 sub. holes coll. for
4P247684E22 = 14524 P24879E22 = 1452

Find SE BT plainly marked,
and burned during 1908 EBT.
Pithub by meas. & Dubre.

Setting transit on corner, 5
run west, 7040' far.

70.62 - Set Trip Rec. Cor on
ice.

0.0 —

200 Pin on ice

400 " " "

600 " " "

800 " " "

1000 " " "

1025 leave ice.

1095.35 Hub.

1200 Pin

1400 Pin

1600 " enter small bog

1800 " leave same

1907.10 Hub

Recorded

do - 141-30

91

2000 Pin

2200 "

2237.10 Hub

2400 Pin

at 2573.90 feet W. - E + W

Sump line crosses T + S Center line

at 2555.90 feet N.

2600 Pin

2640 Hub - Sump $\frac{1}{4}$ Cor.

2800 Pin

3000 "

3200 "

3263.10 Hub

3400 Pin enter small bog.

3500 leave bog

3600 Pin

3700 "

3960 Hub. Sump $\frac{1}{16}$ Cor.

4000 Pin

4200 "

4400 "

4520.30 Hub

4600 Pin

4800 "

5000 "

5200 "

Recorded

19

20 - 141-30

At NW Cor of 5-800. note call for
B—

Pip	10	N 48° E	25	= 16.50
Maple	8	N 35½° W	12	7.92
Pip	14	S 67° W	26	17.16
"	12	S 84½° E	25	16.50

I find a stake at there with
a new NW Bearing Stumps, the
Maple being burned at no trace.
Courses or meas. would not
show out at all. Putting by
courses they do not check by
50 feet. ^{proportionally} B.T. meas. throws the
B.T. in the ~~same~~ other way and
sections. All B.T.s except
Maple being present. Also by
prop. meas. one of the (S W) 3/4
falls the opposite direction.
To find the Cor. already set
can not be improved, so call it
correct. B.T.s then stand—

Pip	5	N 37° 8' W	20	feet
"	10	S 44° 54' E	69	"
"	6	N 66° 43' E	27.60	"

W.P. Stumps 20 N 77° 31' W 71.60 feet
8° 40' Bar.

Remind

at 5214.60 feet west, NW
Cor. Sec. 5 stands 62.90 feet
north.

Note — MC No 22 on west
side of lake could not be
found — lost.

Notes call for —

LP 20 S 52 W 23 = 15.18

LP 17 N 19 1/2 E 16 = 10.56

Mount 11-1911 — Wm McZou and D.

Corrections

North Line of Sec. 5

at 2640 Sine 1/4 post on north
side of 5 sets east 32.70 feet
and north 31 feet. (Note lost
pug. meas. but MC + NW sec cor.)

1/16 cor. west of 1/4 post, 3960
sets east 49 feet and north
46.54 feet.

N + S Center Line

Length = 5255.90 + 31 = 5276.90
2640 sets north 3.45 ft and
west 46.70 feet

17

141-30

E + W Center Line
3640 sets west 39.82 feet
and south 23.30 feet.

Center of Section

Bearing S

N.P. Plumb 12 N 16° 36' W 8.40 feet
9° Var.

Corner then stands 24.6 feet
south of E + W random line
at 2783.35 feet west.

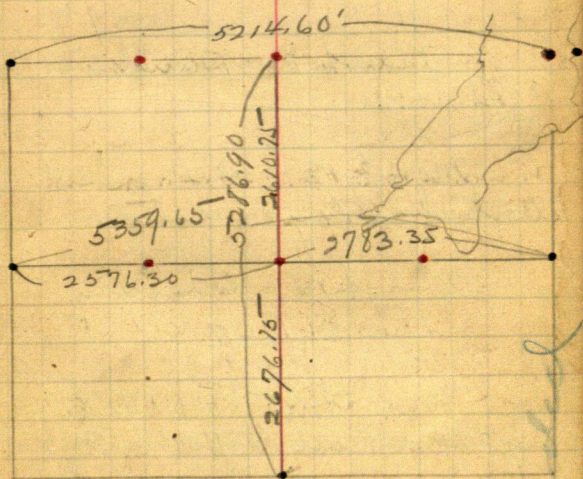
1/16 Cor. bet. C + 1/4 on West
Single line from 1/4 to 1/16 = 5359.65
Cn. of Sec. sets 2783.35 feet W.
Dis from C to 1/4 on W = 5359.65
— 2783.35 = 2576.30
 $2576.30 \div 2 = 1288.15$
 $2783.35 + 1288.15 = 4071.50$
 $4071.50 - 3960 = 111.50$
3960 sets west 111.50 and south
35.23 feet.

New Bear. at 1/4 on N 75°
N.P. Plumb 14 N 59° 51' W 13 feet
8° 30' Var.

Recorded

12

13 to sets west 71.67 feet and south 12 feet.



Black = 1500. corns 5 found.

Plat of True Lines
of
Section 5-141-30

14
In P.M. Wm Mc ever, Ernest
Beard and I carried my
stuff to the Penitentiary, where
I took the train, to Walker,
arriving at 4.50. P.M.

March 12 - Sunday
at home.

March 13 - '911.
Worked all day on notes.

March 14 - Tuesday
Election.

March 15 - 1911. Wed.
Left Pine River at 9:00 A.M.
with Siverly & came. Arrived
at Pontonville 11:45. Dinner 60¢
Left Dupree at 1:00 - arriving
at Moultrie at 2:30.
Worked on notes.

Recorded

^{and new} 140-29
Gov. Field Notes.

209

15

Record No.

S.W. Cor. Rec. 36 - 0

WP 16 N 5 E 28 lks = 18.48 feet

Br 9 N 40 W 35 " = 23.10 "

Br 8 S 50 1/4 W 14 " = 9.24 "

WP 15 S 85 E 9 " = 5.94 "

1/4 Cor. South side of 36 - New B.T's
Set in by Curo.

WP 16 N 30 S 54 1/2 E 66 1/4 ft to tack

" " " 30 S 38 1/2 W 43.22 " " "

MC No 7 - Gov. Notes -

WP 4 S 10 E 7 = 4.62 feet

Pop 5 N 55 E 12 = 7.92 "

Curo found Br and set Cor. with
New B.T's - 80 fms.

Br. Stp 8 S 18 1/4 E 3.40 feet

Pop 6 N 58 1/2 E 41.80 "

MC No 4 - Not found

MC No 8 - Not found

see next sheet

MC No. 10 - Gov. Notes -

WP 5 S 85 E 4 = 2.64 feet

209 do -

WP 6 S 55 W 25 = 16.50 feet.
Curo found 100 T.

1/4 Cor. on West Ridge 36
Hoo. notes - One 7 at 1.
WP 20 S 20 E 12 = 9.97 feet
WP 14 N 80 W 37 = 24.42.

Curo didn't find - says "lost."

SE Cor. 36. Hoo. Notes - N
R. Maple 11 N 87 E 20 = 13.20
S. " 6 S 37 E 39 = 25.74
W. Bri 6 S 8 W 27 = 17.82
Bb Oak 8 N 66 W 22 = 14.52

MC No 9 - Hoo. Notes -
W Bri 8 S 2 E 8 = 5.28 feet
" " 7 N 40 E 17 = 11.22 "

MC No 4 - Hoo. Notes
WP 20 S 25 W 25 = 16.50 feet.
Dry P 17 N 3 W 40 = 26.40 "

MC No 1 - Hoo. Notes -
June 7 250 W 23 = 15.18 feet
" 12 N 35 W 24 = 15.84 "

Record N-209

do -

209

MC No 1 - do -

Sum - $N 87 W 90 = 59.10$ feet

MC No 2 - do -

Jan 5 $R 10 W 50 = 33$

" 6 $S 70 E 20 = 13.20$

MC No 3 - do -

W Map 7 $S 73 W 22 = 14.57$

W Bar 7 $S 73 E 12 = 7.92$

MC No 5 - do -

WP 20 $N 60 W 10 = 6.6$

WP - $N 70 E 16 = 10.56$

MC No 13 - do -

WP 15 $N 22 E 8 = 5.28$

W Bar 7 $R 85 W 44 = 29.04$

NE Cor Rec. 25 - do - L

Red Maple 10 $N 51 E 16 = 10.56$

" " 7 $N 3 W 46 = 30.36$

" " 8 $S 15 E 57 = 37.67$

Basin 10 $S 8 W 53 = 34.98$

Record No 209

269 209 140-28

1/4 Post-South Bridge Run 31 -
Kov. notes - 2 -

Sind 7237E19 -
W map 57135W12 -

Q E Cor Run 31 - do - S
Jama 6711E62 = 40.92
" 6743W66 = 43.56

Record No 209

140-29 Rec. 36¹⁹
South Boundary 209

Thursday March 16-1911

Emil Morke - at man

Walter Thorpe - flagman & chainman

A.W.M. —

We went to 14 cor - south side of
36 - found out hub set by Cure,
and the 2 Bearing strings -
checked for measurement.

We then ran ^{west} along the
graded road.

Second class chaining.

Details of importance on next
page.

Found the SE corner Rec
31-140-28. Stake set in
water, but did not exactly
check for measurement, being
about 6 inches off.

The two tangent stakes were
found, rotten ^{and down} but marks
being very plain.

Then go back and set
Swp Cor as per next page

Record N-209

Distances by Plat (Rec. 31
140-28)

Distance from SW Cor 31 - ¹⁴⁰⁻²⁸ SW
Cor - to $\frac{1}{4}$ cor. south side 31 =
 $20 + 17 \text{ ch} = 37 \text{ ch} = 2442 \text{ feet}$

Distance from $\frac{1}{4}$ cor. S. side of
36 - to $\frac{1}{4}$ cor. south side of 31 =
 $2640 + 2442 = 5082$ - about the
place to look for $\frac{1}{4}$ cor. S. side of 31

Distance from $\frac{1}{4}$ cor. S. side of 36
to SE Cor 31 = 7722 feet.

5041 West (about) 15 feet Pop. 9
cut down, marked - $\frac{1}{4}$ Sec.
cannot find B.T. - Bluffs where B.T.
should be face South. No trace
of map.

7680 (about) Cor. SE - 31

I set SE Cor Aug - 140 - 29 at
2628.50 West of $\frac{1}{4}$ cor. with
side of 36. which is 2625 - on
Curbs line and 28.50 south

Upro a spruce $3\frac{1}{2}$ " Hub
for corner and new Bearings
as follows - 80° Var.

Record N = 209

#209 Dec. 36-140-29
East Boundary

Friday March 17-1911.

Emil Mork - at man

Walter Shoye - ch. more flagman

A. W. M. - Transition

Sitting on DE cor 36 - 3 am
North, 8° Var.

188.70 Hub

200 Pin

400 "

450 enter small marsh bog E-W

600 Pin in marsh

650 leave bog or marsh NW+SE

688.35 hub.

800 Pin in Sagaders.

1000 Pin enter marsh of Little Mule &

1200 " in "

1400 " " "

No trace of MC No 2

1460 enter Little Mule Lake NE+SW

1600 Pin on lake

1800 " " "

2000 " " "

2200 " " "

2400 " " "

2600 " " "

2800 leave lake - enter marsh

Record No 209

do-

209 23

3000 Pin in mark
 3200 " " "
 3400 " leave "
 3600 " on marks.
 3683.50 - Lubin stick at marks
 3800 Pin
 4000 "
 4001.15 Hub
 4024 enter Lake - Big Mule
 4200 Pin on ice
 4400 " " "
 4600 " " "
 4800 " " "
 5000 " " "
 5200 " " "
 5400 " " "
 5600 " " "
 5800 " " "
 6000 " " "
 6200 " " "
 6400 " " "
 6600 " " "
 6706 leave Lake
 6709.75 - Hub at beach

Record No 209

24 209

do -

I find the NW BT ^{stump} MC No. 1,
the stump cut low but near
by I found a pine about 6 feet
long - with B.T. on it, also the
upper blaze and marks.

The stump was marked
MC - evidently done by C.W. as
- also find a hub with taken
it about 6 feet east I set the
MC from the stump by
course + meas. 8° Var.
Mark the stump B.T.

At 6737⁰⁰ feet North MC No.
5 sets 46.92 feet east.

Corrections for East
Boundary Dec. 36 - 140 - 29.

4001.15	sets east	28	feet
3683.54	"	25.7	"

At East MC No 3, D put in
a new one at 4001.10 feet
north. with new
Record No. 209

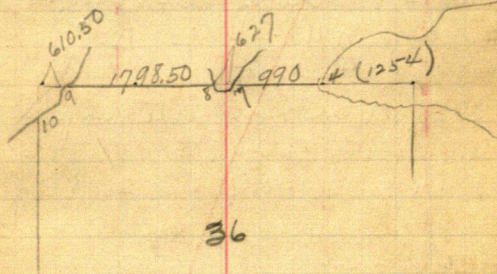
Sec. 36-140-29 - North Boundary ²⁵

Bearings as follows:

Pop 7 S — E 8.88 feet

But 5 S — W 4.90 "

Could not take courses on
account of a deep bank
snow where N.C. crossed.



Distances of north boundary
of 36-140-29 as given on plat.

Saturday March 18-1911.

North Boundary Sec. 36

Walt Shorge - ch - flagman

Emil Mork - as man

A.W.M. - as man

Record N-209

26 " 209 do-

At mc no. 9, found both pins,
the NE a dump, and SE stand
ing, both rotten. The NE
plainly marked B T. Cannot
distinguish marks on SE.

I set the corner by means.

old B T is then stand —————
Pin at 7 N 42° 30' E (put at 12 mi)
" 8 S 3° 30' E (from mc)

I put in new B T as follows
Balighat 4 N 49° 20' E 7 feet
WP 14 S 39° 47' E 26.80

Open run east on 80° W.

200 Pin

236.35 Jack in log

400 Pin on small clearing

600 "

800 "

820 enter meadow

1000 Pin in "

1200 " " "

1400 " leave "

1587.10 Jack in 4" log.

1600 Pin

1800 "

1812 enter Bluewater Lake

Record N-209

Mc 209

do - 1 209 2A

2100 Pin on lake

2200 " " "

2400 " " "

2413 leave lake

at 2433.9 East, MC no 7
sets 18.10 feet north

1587.10 sets north 11.80 feet

Setting on MC no 7 and backsighting
on corrected hole 1587.10, 3 min
east on true line. (Knowing MC no 21
was lost)

MC no 7 = 0.0 = 2433.90

1000 Cross road - NE + SW

200 Pin

400 "

600 " enter meadow - small

700 leave same

800 Pin - 982 - Pin on bank

985 enter lake [982 - Hub]

Notice MC no 4 -

Started to rain at 5:30.

We then quit.

Record No 209

~~North Boundary Sec 36-140-29~~
~~209~~

Sunday March 19-1911

By the plat, the distance
from MC No 9 to MC No 7 is
2425.50 feet.

Distance by my chaining =
2434 feet, the difference =
8.50 feet.

By plat, distance from MC
No 9 to MC No 4 = 3415.50 feet.
My chaining to water edge
= 3419 feet. Difference = 3.50
feet.

Distance by plat from
MC No 8 to No 7 = 627
My chaining across lake,
from water edge to MC No 7 =
622.

By plat, 1/4 cor should sit
396 feet west of MC No 7, or
231 feet east of MC No 8.

∴ 2425.50 : 2434 : : 2029.50 : X
X = 2036.50

Record No 209

1/4 Post. N side 36-140-29/24

209

∴ 1/4 cor on north side section
36 sets 2036.59 feet east of
MC No 9. or -

397.50 feet west of M.C. No. 7

To get the above 3
proportioned the distance
the 1/4 cor. should set between
MC No 9 and No 7, they
being the only Gov. corners
on the north boundary of
Sec. 36.

Gov. chain from MC No 9
to No 7 = 2425.50

My chain = 2434.

1/4 cor. by Gov. chain should
set 2029.50 feet east of MC No 9.

By prop. the distance it
should set 2036.50 feet east.
or 397.50 feet west of MC No 7.

1/16 cor. east of 1/4 cor., north side
of section.

sets 1320 - 397.50 = 922.50 feet
east of MC No 7. 3 feet in hole
with oakum or putrow. turned from
north round. Being

WP Ptp 30 N 18° 22' E 19.60

Pine stub 18 S 59° 15' E 51.85

Record N = 209

209

Monday, March 20 - 1911

Walt. Shoyes - chman + flagman
Emil north - Culman

G.W.M.
Arthur Johnson - " in P.M.

At 2271.50 east on line E+W
North Bound. line, we cross
N+S - Rand. line just bound
at 5337.40 feet N.

North Bound. 36 - runs on
8° 33' Var. (True line)

N+S Outer line - Sec. 36 - 140-29

Sitting on 1/4 cor - north side
y 36 - which is on the line,
then south 8° Var.

159 - Suck in 5" balsam stg.

200 Pin on N side near

259.8 with in 12" oak stg.

324 Cross road - NE + SW

400 Pin

600 "

700 - 1/2 acre grass meadow

Record No 209

N + S Center Line - Sec 36 - 140-29

31

800 Pm

941.90 Feet in log **209**

1000 Pm

1200 "

1300 Hub - Long 1/16 Cor

1400 Pm

1595 Feet in 6" oak log

1600 Pm

1800 "

2000 "

2119.10 Feet in log

2200 Pm

2375 enter small meadow 7 E + SW

2400 Pm in "

2500 leave meadow

2600 Pm

2640 Hub - Long Center Section

2810 Pm

3000 "

3048 Cross T.R. Longville road - 7 E + W

3102 Hub

3200 Pm

3260 enter Little Mule S marsh 7 E + SW

3400 Pm in "

3600 " " "

3800 " " "

Record No 209

32

209

do -

3950 enter tamarack

4000 Pin in "

Tuesday March 21 - 1911

Continuing line -

4100 leave tamarack

4200 Pin

4249 Hub-driven in log

4400 Pin

4600 "

4800 "

4911.15 Hub

5000 Pin

5200 "

At 5330.45 South - $\frac{1}{4}$ cor. south
riding 36 sets 841 feet east.

Record N^o 209

West Bound 736-140-277

33.

209

Setting on SW cor. 36 - set
by Curo from 1500. B.T.'s - checked.
3 min north - 80 Var

200 Pin in Elton's garden

400 Pin

451.75 Hub.

600 Pin

Walt Shorge - ch. flag man

Emil - m. k. - at man

Arthur Johnson - "

A.W.M.

800 Pin

907 Hub

1000 Pin

1200 "

1320 Hub - Temp $\frac{1}{16}$ Cor - enter

Walt Shorge's clearing

1400 Pin in clearing

1437.10 Hub. "

1600 Pin " "

1700 leave "

1800 Pin

1900 enter lowland

2000 Pin "

2100 leave "

Record N = 209

34 209

do-

2200 Pm

2310 enter meadow

2400 Pm in "

2550 leave "

2600 Pm

2640 Hub.

No trace $\frac{1}{4}$ corner

2700 Pm

2896 Hub

3000 Pm

3050 enter brushy meadow

Distance by plat from SW cor 36
to mc no 10 = 4455 feet.

3100 leave same

3200 Pm

3400 "

3480 enter swamp

3600 Pm in "

3800 " "

3960 Hub - ~~leaving~~ $\frac{1}{16}$

4000 on in swamp

4200 " " "

4300 leave "

4400 Pm

4368.50 Jack in log

4390 - Road NE SW

Record N-209

MC No 10

35.

Wed. March 22-1911 **209**

Walt Thorge - ch - flagman

Emil Mork - ad man

Arthur Johnson

Down

At MC No 10 - 3 found with
ad BT's - the distribution
plainly marked - the air
simply with faint grey lines,
with dark dots.

I set the corner by means
of BT's then stand

Pine Stub - 17 331° 41' W 16.50 feet

Pine Stg - 8 S 55° E 2.64 "

True Bearing -

Pine Stg 14 S 45° E 3.17 (8°/ac)

At 4497.50 north - MC No 10
alt 9.05 feet west.

Meas. on this line being
too long, I set the 1/4 cor by
prog. meas. as follows:

4495 : 2640 :: 4497.50 : x

x = 2667.7

Record No 209

36 E 209 Cutline - 36

At 2640 $\frac{1}{4}$ cor - west side 36,
alt 22.7 feet north and
5.30 feet west.

→ drove a small plug in
a large WP log for the $\frac{1}{4}$ cor.

Recordings -

WP Stp 24 S $28^{\circ}45'W$ 17.40 feet

Sub " 20 N $13^{\circ}45'W$ 30.40 "

Course turned 8° Var

Open run east - 8° Var

200 Pin

400 "

600 "

625.50 Hub

700 Pin

1000 "

1200 "

1400 "

1600 "

1786.10 Hub

1800 Pin

1850 into meadow

2000 Pin in "

2200 " " "

2400 " " "

2450 leave "

Recorded

N + S Center Line
Corrections

At 5330.45 South, $\frac{1}{4}$ cor. south
side of 36 sets 84 feet east.

2640 sets 25.20 feet south
and 42 feet east.

159 sets east	2.50	feet
259.8 " "	4.10	"
941.90 " "	15	"
1320 " "	20.8	"
1595 " "	25.1	"
2119.10 " "	33.4	"

Det Center of Section

New Bearings - 830 m

WP to 30 N $40^{\circ} 5'$ W 31.80

WP to 30 S $43^{\circ} 25'$ W 21.08

2600 Pm

At 2650.35 feet east, Center
of Section sets 40.90 ft north

38 209

Correction — 36-140-29

Rough $\frac{1}{2}$ of West Boundary
At 4497.50 north — MC No 100
sets 9.05 feet west.

451.75	sets west	0.90	feet
907	" "	1.80	"
1320	" "	2.60	"
and north 11.10 feet			
1437.10	sets west	2.90	"

West $\frac{1}{4}$ of E + W Center Line

At 2650.35 feet east, center
of sec sets 40.90 feet north
625.50 sets north 9.70 feet
1786.10 " " 27.60 "

N + D Center Line of NE $\frac{1}{4}$

110.85	sets east	0.70	feet.
506.4	" "	3.20	"
1320	" "	8.40	"
and north 13.30 "			
1875.15	sets east	11.80	"
2300	" "	14.20	"

Record N + 209

209

Thurs. March 23 - 1911.

Note —

$\frac{1}{16}$ Cor - east of Center of Section
should set 1317 feet east
of Center.

Walt Thoye - ch + pl. man
Emil Mork - ch. man
Arthur Johnson - ..

Setting on Center of
Section, then east by
back-sighting on corrected
hub - No 1796.10.

Running east on true line -

150 into small meadow

200 Pin leave "

400 Pin

417 Cross P.R. Song. Road - NE + S

434.75 Hub

600 Pin - slope.

800 "

1000 "

1200 "

1317 Set a 3 x 3 x 24 Peg stake
for $\frac{1}{16}$ Cor.

Record N = 209

40° N + S Center Line - NE 1/4 - 36-140-29

209

Put in Pickering's tunnel
from true E-W line.

Exp 5 N 57° 45' W 26.75 feet
W 270 N 50 E 45.90 "

Run north 8° 20' Var.

110.00 On line long along
270 Run

267.50 Cross P.P. Song Road E-W
460 Run

506.40 Hub

600 Run

700 " enter tunnel bog

1000 " in " "

1075 leave " "

1200 Pin

1320 Hub

1400 Pin

1600 Pin

1800

1875.15 Jack in Bassett string

2000 Pin

2200 Pin

2300 Hub

At 2300 I spot around an
old house. - 12 feet east.

Record No. 209

209

at 2666.6 feet north - $\frac{1}{16}$ ft
 cor. sets 4.8 ft + 12 ft (opp set) =
 16.8 feet east.

with 1/16" A. M. record

Friday March 24 - 1911.

Walter Thorpe - ch. + Hyman

Ernest Morke - at man (A.M.)

We counted in A.M.

Where the N-S Center Line of
 36 enters lake at north end,
 5 feet in a line - $2\frac{1}{2}$ feet
 south of water edge, or
 159 feet south of 1/2 cor.
 which sets in lake.

Bearings - $8^{\circ}30'$ var.

Sum 14 S $76^{\circ}48'$ W 8.35

S map 6 S $34^{\circ}6'$ W 9.13

which ends the survey
 in 36 - 140 - 29.

Record N-209

140-28

MC No 65 - Nov. Notes

Elev 10 N 2 E 35 = 23.10 feet

MC No 63 - Nov. Notes

NP 14 S 5 E 38 = 25.08 feet

Wash 4 N 20 W 7 = 4.62 "

Walt Storp and I walked
to the very corner site.

Found the NP Bearing
line for MC No 63 - the stop,
rocks and 10 foot log.

Plainly marked B.T., the
upper being cut up.

B marked a NP Sp 12
S - E., N.B.T. - which was
standing right beside the
down B.T.

Weather roughly
chained north. -

160 - Put up to 1 benzer Sabe
700 - I blazed a 120 NP Sp
on 3 sides, which is about
the center line of lot 4.

The N.P. B.T. which

I found it about 4000
south of the 4th large Norway
tree - going south from
the Portage.

The above work was
done for Forbes. I paid
Walt Thorge \$1.00 for his
work.

Sat. March 25-1911.

Drove to Pine River - Sweeney
Team.

Et glasses 60x, at Tripp.

Sun. 3-26-11

At Home.

Monday 3-27-1911.

Worked on Mulligan over-
flowage deal.

1 day
1 plat.

Tuesday - 3-28-1911

In A.M. I went to Brainerd, then
to Sylvan, then to W.B. Jones. Fare 81¢.

In P.M. I went out to where Cus was
surveying - and worked. He went with
Jones.

133-29 - Dec. 7

East Boundary

Tuesday 28-1911 P. M.

Reg. at Cor - 5-677-8 - which
was set by Curo - 5 runs south
9°45' Var.

(Curo of Wednesday)

Hills + Boundary Survey
200 ft. Chicago Street Sigs.
Plumb bob line.

Double center stake

Wed. 3-29-11.

Everet Hines

Arthur S Palmer

John Longman

A. W. M.

My outfit

Continuing - got line south

Recorded in Curo's notes

no -

133-29

2300 Pm

2500 "

2700 " 2900 Pm

2951.60 - Hub in road

2955 - (about) cross E-W center
 line at about 5446 to E

3000 Pm

3200 "

3258.80 Hub

3400 Pm

3600 "

3725 enter small sluv

3800 Pm in "

4000 " " "

SE Cor-7 - Gov. notes call for
 cor 7-8-17-18

BP 10 S 73 1/2 E _____

BP 6 N 47 E _____

BP 6 S 27 W _____

Back 4 N 28 W _____

4200 Pm in sluv

4250 Leave "

Var. 90/5'

4299.80 Hub

Recorded
 with Carson
 notes

46

do - 133-29

4400 Pm

4600 " S ground SE + NW

4800 "

4821.40 Hub

5000 Pm

5200 "

5305.60 Hub

Found SE + SW bearing trees and
standing. Also a rock and iron
corner. They look very close.

Walking back to the AE Cor

7 - down west 8° 30' Var.

200 Pm

400 "

600 "

628.35 Hub - on side of hill

800 Pm

1000 "

1/4 cor. bet. 6 + 7 -

H to Y at 6 -

$7P8 S 54\frac{1}{2}^\circ W 328 = 216.48$

$P. \text{ and } 6 776\frac{3}{4} W 104 = 68.64$

Recorded with Cuss's Vales

Dec. 7 - 133-29 - North Boundary ⁴⁷

Thurs. 3-30-1911.

Continuing east line met
Same crew etc.

1200 Pin

1400 "

1477.85 1 Stub

1600 Pin

1800 "

1872 enter small meadow - ECU

2000 Pin in "

2200 " " "

2400 " leave meadow

2600 Pin

At 2580.20 feet West - $\frac{1}{4}$ corner
bet. 6 & 7 sets North 63.40

2 find a dead stub 12-gate Pin
standing SW - plainly marked
B.T. - the top being all chopped
away - by a poor axman.

21 seems to be the right course
and size for the N.P.

Setting machine at stub 5
run a line N $54\frac{1}{2}$ E.

Recorded

48

do - 133-29

3 out the cor. from the top Pine
by course & new ^{-8° 1/2°} setting
machine on peg for corner. I
find the old holes of the red
cable. -

$\pi 76/4$ W 67.80 feet.

628.35 sets north 15.4

Setting on $\pi/4$ cor - down
west by back-sighting on connected
hub no 628.35. $70/15'$

146.90 Hub

200 Pine

400 "

600 "

758.10 Hub

800 Pine

1000 "

1105 cross ^{with} line - $\pi + S$

1211 " road "

1300 Pine

1400 "

1600 "

Recorded with Curo's Notes

133-29

49

1786.75 Hub

1800 Pm

2000 "

2200 "

2400 "

Friday 3-31-1911.

Same Crew etc.

Continuing yr line west.

2500.10 Hub

2600 Pm

2800 "

2893.90 Hub - which is set
in Cur's N+S Random Line
at 3707.30 feet North about

Going to the NE cor - 7-133-29

Set on hub and north
north 9°55' Var.

200 Pm

400 "

600 "

797 Hub in old road.

800 Pm

1000 "

1200 "

Recorded

50 Dec. 6 - 133-29 - East Boundary

1400 Pm

1600 "

1800 "

2000 "

2017.50 Hub - (Needle 10°30)

2200 Pm

2400 "

2470.50 Hub

1/4 cor. bet. 5+6 - 1500. no line
call for - S to B at 6 -

TP 8 N 5 E 320 = 211.70 feet

TP 6 S 25 E 230 = 151.80 "

I find the NE Bearing tree,
standing and green - found
marks by chopping slightly.
At SE-BT I find a tree 5 feet
high - chopping in at bottom
I find the BT plain. Upper
block showing plain - also
where some one has chopped in
previously.

do - 183-29

51

Saturday - April 1st - 1911.

Some new etc.

Setting the $\frac{1}{4}$ cor bet. 5+6 -
which took us 4 hours. -

Set the $\frac{1}{4}$ cor bet. 5+6 by means
old B TS stand - 10° Var.

N 14° W 50° 17' E

N 14° W 326° 25' E

At 2506.80 feet N., $\frac{1}{4}$ cor bet
5+6 sets 80.30 feet west.

Random Sine 10° 30' Var

At the $\frac{1}{4}$ cor. bet. 5+6 - I drove
a bolt $\frac{1}{2}$ " x 14" - it sets in the
west wheel track of wagon road.
7 feet west - at right angles to
wheel track I drove a bolt.

The iron is drove $\frac{1}{2}$ " below the
ground.

Distances all measured
3 times. W. H. Hines to setting
of iron - Jones - Hines
Palmer, Hoffman

57

In P.M. I went to Pine River.
Fare 81¢.

Sunday 4-2-1911
At Home.

Monday - April 3 - 1911.
To Summit in A.M.,
returning in P.M.

Tuesday April 4 - 1911.
Leave P.R. 10:42
Arrive Ellerbe - 12:40.
Fare 88¢

In P.M. I drove to Mr.
Bennett's place. Fare \$2.00
Paid by Mr. Claw.

134-30.

192

53

Gov. Notes of Corners

N E Cor Rec. 4 - D

Sum 8 N 46 E 80 = 57.80

" 7 N 81 W 110 = 17.60

" 8 S 79 W 117 = 73.92

Angle 10 S 84 E 94 = 62.04

1/4 Cor. N side of Rec 4 - c

Sum 5 N 67 W 120 = 79.20

" 6 S 88 W 187 = 120.12

1/4 Cor. East side of 4 - Q to Date 6 -

Pg 12 S 35 W 7 =

" 14 N 25 W 17 =

NW Cor Rec. 4 - C

Sum 24 N 60 E 23 = 15.18

" 20 S 5 E 15 = 9.90

" 20 S 30 W 37 = 24.42

1/4 Cor - W side of Rec 4 - P to Date 6

Sum 17 East 120 = 79.70

Recorded

192

54

192

134-30

D.W. cor. pu 4 - 4-5-8-9

Dum 14 N 10 E 51 = 33.66

" 14 N 64 E 27 = 17.87

" 14 S 61 E 35 = 21.78

" 12 S 17 W 30 = 19.80

1/4 cor - siding 4 - 14 to 4 at 4

Dum 12 N 34 E 19 = 17.54

" 6 S 28 W 20 = 13.70

SE 1/4 pu 4 - 3-4-9-10

Dum 6 N 26 E 10 =

" 6 N 49 W 13 =

" 13 S 21 E 27 =

" 7 East 14 =

MC No 31 -

Pine 20 S 5 E 15 =

" 20 S 20 W 37 =

Recorded

192

134-30.

192

52

Wed. April 5-1911.

In A.M. - clear, Bennett,
Steve Collins and I walked
and rode around Sec. 3 & 4
looking for corners.

P.M. - same crew -

1/4 Cor. 9 sides, Sec. 3-2-

Run 18 R (N) 29 E 20 = 13.20 ft.

Calc 14 S 69 W 38 = 25.08 "

Set the 1/4 Cor. by new and
course from the NE B.J.

Run west - 7° 30' far.

(Mr. Clowichman & flegman)

200 P.M.

377.15 Hubs.

400 P.M.

600 " - 800 P.M.

850 inter old sawing - hay meadow.

1000 P.M. in "

1200 " " "

1320 - Hub " " Run 1/6 Cor

1400 P.M. " "

1600 " " "

1800 " " "

2000 " " "

192

Records

56

Dec. 3 + 4 - 134 - 30

North Boundary

2150 leave survey

2200 Pm

2400 "

192

2447 Hub

2600 Pm

2637 - Halletts Bay Cor. sets

ft.

2640 Hub - Survey Bay Cor.

2800 Pm

2957.70 Hub

3000 Pm

3200 "

3400 "

3600 "

3800 "

3964.85 Hub

3960 " Survey 1/16 Cor.

4000 Tm

4200 "

Recorded

Thursday April 6 - 1911

Mr. Chow - Fly - Cherson.

Rev. Collins, Rev. Collins,

W.E. Bennett, Friday - Humphill
Cherson.

192

Continuing up. Time west.

- 4400 Pin
 4500 enter swamp 192
 4600 Pin in "
 4650 enter Mud Lake
 4800 Pin on side
 5000 " " " "
 5200 " " " "
 5250 leave "
 5280 - Hub in swamp. Temp $\frac{1}{4}$ Co.
 5400 Pin in swamp
 5600 " " "
 5700 leave "
 5800 Pin
 6000 " "
 6156.60 Hub
 6200 Pin
 6400 "
 6473 enter small swamp
 6575 leave "
 6600 Pin (Hub 73 / Temp $\frac{1}{16}$)
 6800 "
 6949 Hub
 7000 Pin 192
 7200 "
 7400 "
 7600 "

Record

58 NW Cor Sec 4-134-30

7800 **192**

At the NW Cor. Sec. 4-134-30.
notes call for - Page 53.

I find a small stone, also
the 3 ^{stumps} ~~burning trees~~ SW being
badly burned but checking for
course & measurement.

The SE BT stop is not burned
and old blaze shows plain.
The NE BT stop, the blaze shows
plain.

Could not see any iron
marks on any of the stumps,
but courses & ~~notes~~ checked
or nearly checked.

Santa 4 1/2 x 1 1/2 x 10" hub with talk
by news. from the SE & NE BT'S,
SW checked.

Old BT then stands - 9' far.
WP 30 S 3 E 9.85 feet.

I put in a new BT

TP 7 N 87° 30' E 11.35 feet.

At 7874.90 - NW Cor. Sec 4 sets
south 28 feet

192

Recorded

South Boundary - Sec. 3 - 134-30-59

192

Y4 Cor. R. side of Sec. 3 - 134-30-
1500. notes call for - $H \text{ to } Y = 3$
 $NP 22 \text{ N } 43 \text{ E } 44 = 29.04$
 $\text{Pine } 6 \text{ S } 43 \text{ W } 10 = 6.6$

The State has put in a new Bearing ^{ing}
 $NP 11 \text{ N } 54^{\circ} 22' \text{ E } 35.60$
 9° far . They also drove a 1 or $1\frac{1}{4}$ "
pipe - which checks for meas.
Both old strings present but
cannot read the any marks.

Run west 9° far .

200 Pm

400 "

600 "

611.60 Hubs

800 Pm

1000 "

1200 "

1370 Hubs - Survey $\frac{1}{16} \text{ Com}$

-1400 Pm

1468.30 Hubs

1600 Pm - enter survey

1800 " in "

192

Record

60 Sounding Dec. 4 - 134 - 30

2000 Pin in ring 192 "

2200 " " "

2400 " " "

2600 " " "

2629.50 Cross Main road 71+8

2640 Hub - Seng Sec. Cor.

2800 Pin in ring

3000 " " "

3200 " " "

3400 " " "

3600 " " "

3800 " " "

3960 Hub " Seng 1/4 Cor

4000 Pin " "

4200 " " "

4209.80 Hub

4400 Pin - intersection

4600 " " "

4800 " " "

5000 " " "

5200 " " "

5280 Hub " Seng 1/4 Cor

5400 Pin " "

5600 " " "

5800 " " "

6000 192 "

do - 134-30 61

Monday April 7 - 1911 192

Continuing exp. line west -

Steve Collins

Henry Dingle } as men

was Friday

M. Cole - fly + ch mar

A.W.M. - Transition

6126 Hub in song

6200 Pin " "

6400 " " "

6600 Hub " " song 1/6

6800 Pin " "

6900 leave " "

7000 Pin

7081.75 Hub

7200 Pin

7212 cross over - N + S

7220 into song

7400 pin in " "

7600 " " "

9020'

7658.70 Jack in Sam log

at 7647 feet West - SW cor of

Sec. 4 sets north 83.10

feet

Recorded

62 S.M. 192 Rec 4-134-30

At the SW cor sec 4 - Emmitt A
Cole + Henry Kempfield
showed me an old Faderacks
stump which they say was
plainly marked upon the tree.
→ find all the burned
stumps and they check for
meas. + course.

Also find an old burned
stake - marked - 24-5-8-9-
2124 - burned - Henry 6
inches too for SW.

→ set a hub 3 x 3 x 8 ~~and~~
for the cor - New Bearings -

Bear 37° 31' 40" W 15.75 feet
Saw sp 14° 66' 47" E 17.94 "
9° base,

Recorded
192

West Boundary Rec. 4
134-30

63

192

Sitting on cor - 5000 north
9015' Val

200 Pin in buried swampy

400 " " " "

600 " " " "

800 " " " "

1000 " " " "

1200 " " " "

1400 " " " "

1600 " " " "

1800 " " " "

2000 " " " "

2200 " " " "

2400 " " " "

2600 " " " "

2640 - Hub 2000 1/2 cor

2800 Pin in swampy

3000 " " " "

3200 " " " "

3300 none " " "

3400 Pin " " "

3600 " " " "

3621.40 Hub on hill

3800 Hub

3960 Hub - 2000 1/16

ditto Recorded

192

64

192

do -

134-30

4000 P

4200 "

4400 "

4600 "

4800 "

4836.75 Nub

5000 P

5200 "

5400 "

At 5467.55 NW cor Sec 4
set east 28.00 feet.

At the 1/4 cor. west side of 4 -
found the Survey Line, down
but plainly marked - both blazes
and marks plain.

Recorded

192

134-30 192 65

Corrections for North Boundary
Section 4.

Set 7874.90 feet west NW
Cor Sec. 4 sets south 28 feet.

Sub. chain from 1/4 cor - N side of
Sec. 3 to NW cor Sec 4 = 7920

My chain = 7874.90

Diff = 45.10 - short.

7920 : 7875 : 12640 : X

X = 2625

7920 + 7875 : 5280 : X

X = 5250

5250 + 2625 = 7875

2640 sets east 15 feet, and
south 9.33 feet. = NE cor
Sec 4.

192

5280 sets east 30 feet and south
18.66 feet. = 1/4 cor - N side of 4.

1/6 cor - west of NE sec. cor. - 4-

3960 sets east 27.50 feet and south
14.00 feet.

Continued on page 70.

Recorded

66

192

134-30

$\frac{1}{4}$ cor - W side of sec 4
 at 2624 feet north, $\frac{1}{4}$
 cor. sets west 7.85 feet.

Wrote a hub with ticks for cor. and
 put in two bearings - viz:
 from club 5741' 34" E 38.06
 from 1 1/2 # S 61' 53" E 27.50

Recorded

192

E + W Center line - sec 4

67

134-30

Saturday April 8 - 1911. 192

W E Bennett at

Steve Collins - fly + ch man

Mrs. " at

Humphill - at

Sitting on 14 Cor. west side of 4,
- near east. 8° 50' N. E.

200 Pine in aug

400 "

517.65 Jack in log

600 Pine

800 "

1000 "

1200 "

1320 Hub - Temp 1/16

1400 Pine

1600 "

1800 "

1950 Cross W. side road N 20° E W

2000 Pine

2200 "

2400 "

2600 "

Recorded

192

68

192

do - 134-30

2640 Hub - Long Century Sec.

2800 Pm

3000

3200

3400

3600

3800

3960 Hub - Long 1/16

4000 Pm

4200

4400 " leave swimming

4600

4800 Hub

5000 Pm

5175 Hub - not good 2nd

Recorded

192

East Boundary Run 16-134-30 69

134-30

192

Catch NE cor. Run 4 - 5 above
a pipe $3/4 \times 16$ 4 in. above
ground.

Run S - $6^{\circ}15'$ Var

200

400

600

800

1000

1133.90 Hub

1200

1400 Hub

1600

1800

2000

2200

2400

2600

2800

2830 (about) cross E & W Center

2911.80 Hub.

3000 Run

3200

3400

192

Recorded

7th corner. N Bound. 3 + 4. 134-30.

192¹¹

Friday April 9 - 1911

Cont. from Page 65.

$\frac{1}{16}$ Cor. east of NE Cor Res 4, viz:
the $\frac{1}{16}$ Cor. bet. $\frac{1}{4}$ Cor. on N side of 3 and
NW Cor. 3.

1370 sets east 7.50 feet and south
4.66 feet.

Hups -

	sets	south	feet
377.15			
2447	"	"	"
2951.70	"	"	"
6156.60	"	"	"
6949	"	"	"

Recorded

192¹¹

Corrections South Boundary
Sections 3 + 4 - 134 - 30.

Sou. chain - of the south side
Sec 4 = 5338.08 feet.

Sou. ch. w $\frac{1}{4}$ Sec. 3 - (south line)
= 2630.10 feet.

$5338.08 + 2630.10 = 7968.18$ feet =

Sou. ch. from $\frac{1}{4}$ cor S. side of 3 to
SW cor. 4. my chain = 7647 feet
Diff = 321.18 feet - short.

$7968 : 7647 : 2630 : x, x = 2524$
= dis. Sec. Cor sets W of $\frac{1}{4}$ Cor - S. side 3

$7968 : 7647 : 5338 : x, x = 5123$ =
dis. SE Cor 4 sets E of SW Cor. Sec. 4.

SE Cor Sec 4 - 2640 sets east 116 ft.

$\frac{1}{4}$ Cor - S. side Sec. 4 -
5280 sets east 194.⁵⁹ feet and
north 57.35

$\frac{1}{6}$ Cor - east of SW Cor Sec 3
1320 sets east 58 feet and
north 15.81 feet.

Recorded

22 corner 2 Bound see 4 Cor.

$\frac{1}{16}$ Cor. W of SE Cor see 4

3960 sets east 155.25 feet and
north 44.50 feet.

192

$\frac{1}{16}$ Cor - W of $\frac{1}{4}$ Cor - South side
see 4 -

6600 sets east 233.75 feet, and
north 70.70 feet.

Hubs - South Bound 3-4 -

611.60 sets feet

1468.30 " "

4209.80 " "

6126 " "

7081.75 " "

192

see 4 - South Boundary

Dis. from SE to SW Cor -

7647 to 2524 - 5123 feet.

SE Cor sets at 2524 W

$\frac{1}{4}$ Cor " 5085.50 W

$\frac{1}{16}$ Cor - W of SE see. Cor - sets at
3804.75 W.

$\frac{1}{16}$ Cor. W of $\frac{1}{4}$ post sets at 6366.25 W

Recorded

E Bound - Run 4 + 9 - 134 - 32 72

Monday April 10 - 1911

Steve Collins - Ch. + flyman

W.E. Bennett

192

Henry Humphill

George Collins

continuing East. line south

3600 Pin

3800 Hub

4000 Pin

4200 Hub -

4400 Pin

4500.75 1 Hub 6°35'

4600

4800 enter meadow

4925 cross creek - E + W enter

5000 turn swampy

5200

"

5400

"

5434.30 Jackson 3' log - east of road

5600

"

5800

"

6000

"

192

6200

6400

Recorded

6600 line "

74 E Brind. Rec 4+9

192

6770.20 Hub

6800 Pin

7000 "

7200 "

7400 "

7431.30 Hub

7600

7800

8000

$\frac{1}{4}$ Cor. bet. 9+10 - 1200. notes

Q to H at 5

$7P13 \ 713 \ E \ 28 = 18.48$

" $6 \ 760W13 = 8.58$

Found both strings - NE plainly
marked. Set hub by men. Courses
checked - nearly.

At 8121.65 feet south, $\frac{1}{4}$ Cor
bet. 9+10 sets east 117.50 feet.

Recorded

192

N + S Center Line, Sec 4, 25

192

at the 14 cor - N side of 4 - we
have an iron - $\frac{7}{8}$ " x 3 feet.

Sitting on 14 cor - N side of 4,
Turn south - $80^{\circ}30'$ Var
200 Hub. Then off set 100
feet west - on account of being
much better. - Before getting
set Hub on hill across by.

400 Pin in camp

600 "

800

1000

1200

1340 leave camp

1400

1477 - Hub on line at east 100 ft.

1600

Recorded

192

76

192

Corrections - East
Boundary Rec 4

Gov. ch. from NE Cor Rec 4 to
1/4 Cor. bet. 9 & 10 =

$$2640 + 5484.60 = 8124.60$$

$$\text{My Ch} = 8121.65$$

Position of Sec Cor - 3 - 4 - 9 - 10
for north & south.

$$8124.60 : 8121.65 :: 2640 : X.$$

$$X = 2639$$

SE Cor Rec 4 - sets 3 at
5487.65 South; -

1/4 Cor. bet. 3 & 4 - Corrections.

Gov. ch. east side 4 = 5484.60

My dist. after article. Rec. Cor. =

$$5487.65.$$

192

$$5484.60 : 5487.65 :: 2640 : X$$

$$X = 2639$$

Recorded

do - 192

23

$\frac{1}{4}$ cor sets South on road.
line at 2843.65 S and
east 48.55 feet.

$\frac{1}{16}$ Cor - E side of 4 - bet. NE
cor + $\frac{1}{4}$ cor.

2844.60 : 2843.65 : 1320 : X
X = 1319.50

$\frac{1}{16}$ Cor sets at 1524.15 South
and east 26.02 feet.

$\frac{1}{16}$ Cor. bet. SE cor + $\frac{1}{4}$ cor -
east side of 4

Dis. from $\frac{1}{4}$ to SE cor = 2639

$\frac{1}{2} \times 2639 = 1319.50$

2843.65 + 1319.50 = 4163.15

$\frac{1}{16}$ cor sets South at 4163.15 -
and east 71.07 feet

Recorded
192

78 71 + S Center Line - 204

Diesday - April 11 - 1911

Steve Collins - Ch. + flagman

Henry Humphill

W.E. Bennett

Wm. Fruehling

Asmen

192

Cont. yesterday's line South -

1796.25 Hub

1800 Pm

1987.70 Hub

2000 Pm

2115 enter swamps

2200 Pm

2400 "

2600 "

2800 .

2834.30 Tarpine cordony

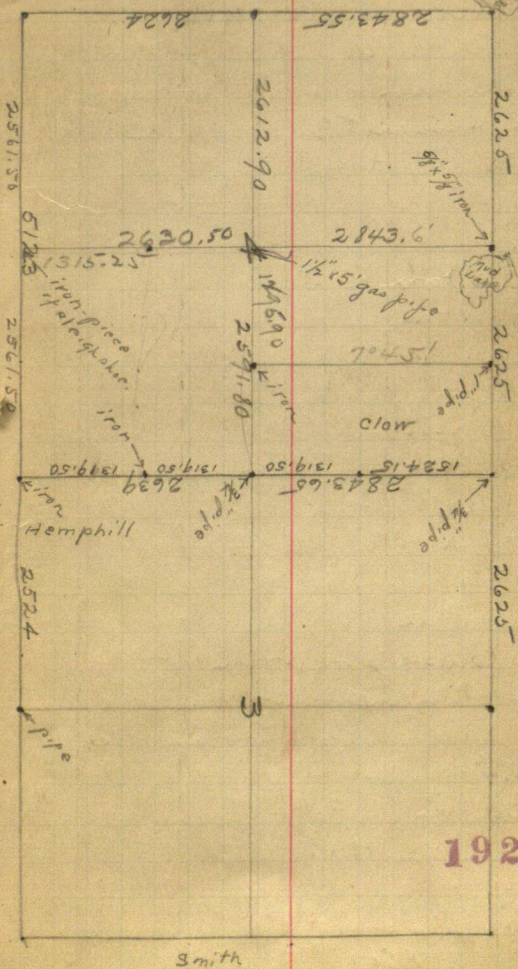
at 2832.60 ft South on random
line - cross east and west
random line at 2630.10 ft
east.

1921 It began to rain and we quit
for the day.

Recorded

192

True distances -
Sections 3 + 4 - T. 134 N., R. 30 W.



192

Wed. April 12 - 1911.

Reine Collins - sk + fly man
Wm. Frisby
W.E. Bennett

Conting. line south

3000 Pin in trap

3200 "

3400 "

3500 level "

3600 Pin

3631.70 Hub

3800 Pin. 3900 level trap

4000 Hub "

4200 Pin "

4320 Cross Barbs E + W

4400 Pin in trap

4600 "

4759.40 Hub

4800 Pin

5000 "

5200 "

5400

192

Recorded

192

At 5531.10 feet R. on N+3
Rand. Center Line - 5 interest
south Bound. Rand. line
at about 5053 west

SE Cor. Sec 4

At 5487.65 S - SE Cor Sec 4
sets east 93.60 feet.

At 2524 West - SE Cor Sec
4 sets north 31.62 feet

Rained in P.M.

Thursday April 13 - 1911
Rene Collins X
W.E. Bennett
Wm Frink

We corrected. also run
the N-S center line of the
NE 1/4 - sec 4.

192

Recorded

17

see 4 - 134 30

At 5204.70 feet east, on
E. & W. Cent line - $\frac{1}{4}$ cor. side
south 20.2 feet

192

At 5473.50 south on N +
S. Center line - $\frac{1}{2}$ cor. South
side of 4 sets west 33.70

~~Correction~~

Center of Sec 4 (4)
2832 $\frac{9}{16}$ sets west 17.20 feet
and south 10.15

192

$\frac{1}{16}$ cor - W of $\frac{1}{4}$ cor - viz. the $\frac{1}{16}$
bet. the Center of Sec. and the $\frac{1}{4}$
cor - East side of 4 -
sets at 3908.80 East and
south 15.17

3960 sets west 51.20 feet and
south 15.17

Recorded

Dec 4 134-30 13

$\frac{1}{16}$ Cor - viz - bet. Center of run
and $\frac{1}{4}$ Cor South side
at 4158.25 South and
west 25.20 feet.

261

Section 3-134-30.

NE Cor. Dec. 3 - Gov. Notes - E
Sum 5S79 $\frac{1}{2}$ E 218 = 143.88
" 9N37 E 350 = 231.00

$\frac{1}{4}$ Cor. N side of Dec 2 - Gov. Notes - e -
Sum 10N23 $\frac{1}{2}$ E 114 = 9.24
Apr. 7S28 W 9 = 5.94

NE Cor. Dec. 2 - Gov. Notes - F -
B side ad 14N49 $\frac{1}{2}$ E 98 = 6.468
Sum 7N35 W 114 = 75.24
Sum 8S74 W 206 = 135.96

Recorded

192

14 Rec. 3 - 134-30
North Boundary

Friday April - 14 - 1911.

Reine Collins X

W.E. Bennett

was Friday

192

Setting on the $\frac{1}{4}$ cor - N side of
Sec 3 - Run out 8040'

200

337.25 Hubs

400

600

650 enter same run

800

1000

1200

1370 Hub Jump $\frac{1}{16}$ Cor.

192

Then lost my balance in
getting over log, and bent and
broke my transit. 4 -

So True River - this to be changed
to Cass Co., as changed 1 day
going down to Clow.
15 + 16 at Washburn Co. Co.

N. Boundary Rec. 25-138-27 75

Sunday - 4-25-11

In P.M. - Fred & I drove to
Butterfield - 1 day Allen Jags

Wed - 4-26-1911.

D. Butterfield x
John Silman
W. H. Jenkins
John Bates

Walked to the NE cor Rec 25
Sov. now call for - L

WP 24 \nearrow 46 E 495 = 326.70

MP 20 \nearrow 83 E 557 = 367.67

YP 15 S \nearrow 77 W 730 = 481.80

YP 13 \nearrow 27 W 788 = 520.08

Found a WP stp. marked BT-
marked 6 years ago by Garrison.

Butterfield identifies the stp
as the one shown to him 16 years
ago by a NP cousin - which was
then plainly marked.

Garrison's cor. stands S 56° W
- which is wrong

26 NE Cor. Sec. 25 138.27

Set the Cor. 8' by
meas. from the NE B. steps -
the NW and SW B.T. being gone,
old spoke stand -

WP 26 N 48° 55' E 326.70 feet

WP 24 N 88° E 367.67 "

Stakes - about 14' long - with point
for East corner

Thursday, April 27 - 1911.

Butterfield x

W. H. Jenkins

John Stiles

John Gilman

(all men)

1/4 Cor. N side Sec. 25 -

500. notes - L to Y at 1.

NP 8 N 11 W 21 = 13.86

NP 4 S 47 W 23 = 15.18

1/4 Cor. N side Sec. 26

L to Y at 2 -

Ask 8 N 46 W 14 = 9.24

" 5 S 9 W 18 = 11.18

N Bound. Run. 25 138-27 11

NW Cor Run. 25 - Cor. 23-24-25-26

1500. miles -

Red Oak 77 67 E 56 =

" " 77 15W 44 =

Aspen 65 40 E 14 =

W. Bir 8 51 9 W 34 =

Putting on NE Cor - 25 -

Run west 80° Var

200 Pm

400 "

600 "

637.90 Hub

800 Pm

1000 "

1200 "

1400 "

1416.20 Hub

1600 Pm

1800 "

2000 "

2200 "

2309 Hub

2400 "

2571.50

2571.50

188-27

at 2571.50 feet west, stone
set south 26.47 feet.

At the $\frac{1}{4}$ cor. - W side 25 - S
find a rock set in the road,
which was set by Harrison.

Find a slip out low - sets N $\frac{1}{2}$ E
W 14 feet - with a log lying
near - which looks like the
original - being plainly blazed.

There is nothing else
around that looks like it might
be the B line.

Ries says that Wiley set
the cor. about 8 years ago.

The meas. is 2636.04 - 2571.50
= 64.54 feet short.

Setting on north - 3 run
west - 7' 40" - which runs along
south side of graded road.

8° would run in brush south
of graded road -

138-27

200 Pm
 250 enter hollow
 400 Pm in "
 415 leave hollow
 600 Pm
 659.70 Hub
 800 Pm
 1000 "
 1200 "
 1400 "
 1600 Hub
 1800 Pine-leaved-which
 turns S.W.
 2000 Pm

Friday April 28-1911

Butterfield x

John Bates

John Wilson

W. H. Jenkins

Cont. gas. lines must

2700 Pm

2400 "

2522.90 Hub

2600 Pm

2633 - Turn on rock for Sec. Co.

22 N side of Res. 26 138-27

sits south about 1 foot.

2800 Pin

3100 "

3053.30 Hub

3200 Pin

3400 "

3457 into Hogget Creek - 40 feet wide

3600

3800

4000 above meadow -

4138.25 Hub

4200 Pin

4400 "

4457.35 Hub

4600 Pin

4800 "

5000 "

5076.25 Hub (7'25')

5100 Intersecting

5200 Pin ..

At 5288.8 feet west - 1/4 cor.

N side of 26 sits south 18.15 feet.

Length of North Boundary
of sec. 26 by plat -

$$= 80.62 - 5320.92 \text{ feet}$$

$$E \frac{1}{2} = 5320.92 \div 2 =$$

$$2660.46 \text{ feet.}$$

W $\frac{1}{2}$ of N side 25 - meas. by plat
= $\frac{1}{2}$ of 79.88 ch = 39.94 ch
2636.04 feet.

meas. by plat from $\frac{1}{4}$ corner
N side of Sec. 25 to $\frac{1}{4}$ cor N
side 26 =

$$2636.04 + 2660.46 \text{ feet} =$$

$$5296.50 \text{ feet.}$$

$$\text{Thy ch} = 5288.8$$

Position of NW Cor. Sec. 25

NW Cor Sec. 25 sets - viz:

$$5296.50 : 5288.8 : 2636.15$$

$$X = 2637.15 = \text{distance from}$$

Cor. sets W $\frac{1}{4}$ Cor. N side Sec. 25.

$$5296.5 : 5288.8 : 2660.5 : X$$

$$X = 2656.65 = \text{distance from}$$

NW Cor 25 to $\frac{1}{4}$ Cor - N side of sec 26.

$$2656.65 + 2637.15 = 5288.80 - X$$

92 M. Bourd. Rec. 25-

138.27

SW Cor - Rec. 25 - 1500. notes -

25-26-35-36

NP 20 N 45 E 34 = 22.44

NP 10 N 58 W 11 = 7.76

HP 8 S 56 E 96 = 63.36

NP 8 S 30 W 113 = 74.58

Set Cor. from the 4 Bearing
steps by prop. meas.

Run A - 80 Var.

175.50 Hub

200 Pin

400 "

Saturday April 29 - 1911

H. W. Butterfield. X

W. H. Jenkins

J. M. Silman

J. M. Stiles.

Continuing up. line north

600 Pin

800 "

1000 "

do

18827

93

1029.80 Jack in log.

1200 Pin

1400

1600

1670 in field

1800 Pin ..

1881.90 Hike - Said of brown.

2000 Pin in brown

2000 none

2200

2400

2600

At 2636.90. η - Harrison's
stone mon. sets west 2435 ft.

By plat sent to Johnson - meas.
= 2640 feet - which shows
his meas. is wrong.

2657.17 - Hike - which sets
with hole where Harrison's first
stone set.

2800 Pin in road

3000

3200

3400

3600

3800

4000

4200

4400

4600

94

138-27

4678 home road.

4689 Hub by Jenkins house

4870 Pine

Sunday April 30 - 1911.

Monday - May 1 - 1911.

John Stiles

John Selman

W. H. Jenkins

Butterfield X

MC No 6 - Kro. notes

W 24 S 77 E 73 = 48.18

W 10 S 67 W 106 = 69.96

Distance by plat from NW
Cor. Sec. 25 to MC No 6 = 11.73 ch =
774.18 feet.

Look for MC No 6 at N 60 S 41 E

5000 Pm

5210 "

5280 Hub in field - near
hollow to which is west.

138.27

5400

5600

5800

5976 - enter water - which is
7 feet or more high, being
laminated for logging
purposes. The natural
brush being evidently 75
feet farther out.

The blazed oak across the
lake stands 5' 4 5' far from
the line 2 are now on's

P.M.

Made out my bill -
Items -

Surveyor 6 days	\$ 24
Then 70 days	40
Board	7
Fare	5
	<hr/>
	76
Discount	4.86
	<hr/>
	\$ 80.86

Tuesday May 2 - 1911

In A.M. Broke to Pine
River with Butlerfield - \$1.00
P.M. - In office.

Wednesday May 3 - 1911

Worked on Spurrer's land,
laying out lots etc.

Thurs. May 4 - 1911

Spurrer

Friday May 5 - 1911

Set monuments at Spurrer's, in
A.M. - also drove with Forbes.

Sat - May 6

Making plat - Spurrer

Sun. May 7

at Home.

Mon. May 8

Plat - Spurrer

138-27

97

Tues. May 9-1911.

Wed. May 10 - 1911

In A.M. + D. drive to:

Butterfield - 138-27 -
with Fred.

P.M. -

Butterfield - subsurface.

at NW cor. Sec. 25

$\frac{1}{4}$ Cor. - lat. 25 + 26.

At sec. cor. we drove a black
iron pipe $1\frac{1}{4} \times 4'$ - and dug
4 holes in sections, beginning
at on corner.

At 1/4 post - drove a galv.
pipe $1\frac{1}{4} \times 3\frac{1}{2}$ - well drove
with bearing - viz:
Harrison's Bearing stand
from my cor - $80^{\circ}25'$

$10^{\circ}10'N 76^{\circ}E$ 93.35 feet
 $8^{\circ}25'N 57^{\circ}3'W$ 36 "

Holes 7 Du. Cor - 23-24-25-26
At 5280 N Du. Cor sets west
47.85 feet.

2640 sets west 23.94 feet.
4600 " " 41.64 "

At Du. Cor - Harrison's stone
sets south 5.6 feet and
west 4 feet.

I paid out for help -

Butterfield -	\$2.00
W. H. Jenkins	\$7.00

138-27

22

Made out my bill - 30.05

Shurs. May 11 - 1911.

Drove to Pine River Board 1.00

Monday - May 15 - 1911

1 day on State Road - 137-30

Tuesday May 16

1 day State Road - 137-30

Seam - P. R. to River - \$3.00

Wed - May 17

1 day on State Road - 137-30

120

291

137-30 East Boundary

Thursday May 18-1911

Emil Kulla - at man

G. Rounds

Clyde Hall - chairman

A. W. M.

(No Bearings present at 22-23-26-27)

Starting at S E Cor. Sec. 22-137-30,

which was previously set by
Cres. Co. Surveyor, from south, 18° W.

(1/4 mile cut out (200 yds wide)

Corner Hedge of marsh

200 Pin in small round marsh

400 leave "

600 Pin N side of ridge

765.30 Hub on ridge, then
gradually slopes south

800

1000

1200

1400

1475 enters small meadow NW + E

1600 pin in "

1800 " "

7 Dec. 27

137-30 101

291

1900 leave meadow SW-E
2000 mi-gythy slopes upward
to 1/4 cor then down

2200

2400

2600

2640 - 14th - 1/4 cor.

Gov. notes call for - P-E-7

WP 24 North 50 = 33 feet

" 32 727 W 76 = 50.16

No trace, trees being burned

2800

3000 enter open poplar timber

3200

3400

3600

3732 cross path E-W

3800 Pm

3805.40 14th - land gythy slopes S

4000

4200

4400

4509.75 14th

4600

4800

182

291

11

187-30

4900 Center of small ravine 110
feet across

5000 Pm

5200 "

5780 Hub - Grap. Sec. Cor.

SE Cor - 27 - 1200. 2000

Call for - 26-27-34-30-

Age 7 S40 E7 = 1.32

" 6 S21 W3 = 1.98

" 6 N79 E7 = 4.67

" 7 N51 W8 = 5.28

To trace of Sec. Cor -

Continuing line south -

5400 Pm

291

East Board. Dec. 34
137-30

103

Friday May 19 - 1921

Some mud etc.

Contin. up. line south -

5505.10 1st

5600

X

5683.50 Hub

5800

6000

6200

6400

6600

6800 - leave green timber - rain - small
brush - few trees

6850. Hub

7000

7200.15 Hub

7517 - Cen. old road SE & NW

7628.10 - Hub - land begins
to slope down to valley

7800 Cen

7970

Jump 1/4 Cor

Don't notice call for - E - 1

8010 S37E 9 - 5.94

On 7724 W 27 - 17.82

no trace 1/4 Cor

104

"

137-30

8000 291

8117.50 - W side Fm E + W

8200 - enter creek bottom E + W

8249 - Creek 7110 S E

8400 Pine in bottom

8450 leave " - rainwater - 8900

8600

8800

8870 enter ^{small} field

8976.6 Hub in field

9000 Pine " "

9139 pine leave

9210 enter thick poplar bush

9400 Pine in " "

9600

9776 enter small field

9800 Pine in "

9823.75 Hub "

9977 leave " enter thick timber

10000 Pine " "

10200 " " "

10400 " " "

10425.70 Hub N side road E + W

10437 Center main road - E + W

10560 Pine

137-30

291

SE Cor - 34 - 1200. 7000 - P

Dead Sam 57163 E 34 lbs - 22.44

" Price 57177 W 31 " = 20.46

No time 7 corner.

10440 - Hub Sidegrove.
8030'

291

291

291

¹⁰⁶ South Boundary Dec 35-
137-30

291

Saturday, May 20-1911

Same crew etc-

1/4 cor. - South side 35- 137-30

Gov. notes call for - 0

Pine 8 N 6 E 40 -

" 6 N 6 W 37 =

S E Cor. - Dec 35 - Gov. notes - 0

Pine 12 N 7 1/2 E 50 - 33

W Pine 14 N 33 1/2 W 31 - 20.46

Going to the S E Cor. - Dec 35-

I found an 8" x 11" x 36" cement
post, set by crew, from the
Pine bearing tree.

Spota hub 1 foot north
(telephone pole in line) and
run west 8° 20' Var.
N 136-30

700 Pine

400 "

470.55 Hub

600

800

926 - Cent. driveway S-

1000

" 291

1911

do

137-30

107

291

1057.75 Hub

291

1200 Pin

1400 enter dry lowland

1600 Pin on "

1800 Hub "

2000 " "

2200 leave "

2400 Pin

2600 "

2640 Sings $\frac{1}{4}$ Cor. (Said 35)

2730 enter meadowland

2800 Pin on "

2937 Cub 7 feet across N+S - flowering south

3000 - meadow

3200 leave "

3400

291

3600

3800

3885.80 Hub

 Sunday May 21st -
 At Home

Monday May 22

Rained in A.M.

291

100

291

291

137-30

Tuesday May 23-1911

Same crew, etc.

Continuing Rato line west.

3975 subit-intersect swg. S + N E

4000 Pin in swg.

4178 same

4191 Cross road SW + N

4200 Pin in swg.

4354 50 cross wing fence N + S4390 inter ^{same} swg.

4400 Pin in "

4600 " " "

4800 do

5000 leave swg - N + SW - knoll

5700 Pin in swg.

5780.30 Hub.

Then go out north 64 feet
(+1 = 65) by turning 90° angles

Walking back to Hub N 3885.80

Set ~~at~~ a new hub north 64
feet - for a backsight.

Then continued west from

5280.3 W and N 64

5400 Pin in road

5600

5800

South Boundary of sec

34 137-30

291

6000

6104.50 Cen. 2 pt' curb 71+S

6200

6400

6600 Hub

6800

7000 - WPB Due to Cor- 3+4-stand
SW—

7200

7400

7500 Hub

7600

7800

787650 - Cross 5' culvert - 71+S - small ditch

7970 Dump 1/4 post

1/4 post - side side of 34 - low. note p

Sec 13 N 58 E 38 = 25.08

" 8 71 40 W 4 = 2.64

No trace of 1/4 corner

8000

8200

8400

8600

291

110 H 291

do

1911

8800

137-30

9000

9200

9400

H 291

Wednesday - May 14

Romeo crew, etc. brought 6 Pounds, about
Cont. up. line. West

9534.75 Hub

9600

9800

10000

H 291

10043.60 Hub

SW Cor. Sec. 34 - 1500. notes - Q -

Asp 11729 E 9 = 5.94

" 11738 1/2 W 28 = 18.48

10200

10400

10560 Hub - Same sec cor for SW
Cor - Sec. 34 - no trail of some.

10600 1 -

10800 "

10833 - Cent 5' culvert - no water

South Boundary line. 33-137-3911

11000

137-30

291

11200

11400

291

11592 Hub.

11600

11800

11919 - Am. 2' culvert - no water

12000

12200

12400

291

12476 Hub

1/4 post - south side of section

33 - 200. notes - 2 -

W Br 6 N 52 1/4 E 3170 = 112.20

Dead Asp 6 N 61 1/2 W 76 = 17.16

12600

12800

13000

13200

13739.13 Hub - when offset

South 15 feet, 1 telephone poles
in line, going back to Hub 20

12476 Set a ~~new~~ one hub

15 feet South for a back sight.

117 291

-do 137-30 1911

This now makes me 65'-15'-
50' feet north of line started
on.

Continue line west =

Thursday - May 25

Rounds - Kulla - Hall - S

13306.5 - Cen. 4 1/2' culvert - dry

13400

13600

13800

14000

14200

14400

14406.75 1st sub

14600

14800

15000

15200

15400

15600

15800

15885 Cen. 3' culvert - dry

15898 - Cen. road running north

15892.6 1st sub. 8' 30" Par

15840 2nd sub
see 33
branch

15884 High line running north

South Bound. Dec 37

113

3 miles = 15840 feet 187-80

At the SW corner Dec. 33 - 291

Had. notis call for - R -

Same. $47 \frac{1}{4} 45 \frac{1}{4} E 5 = 3.30$

" $67 \frac{1}{4} 13 \frac{3}{4} W 37 = 24.42$

I find an old stake $3" \times 3" \times 18"$
on the south side of the grade,
which P.O. M. Ambrose says
was put in. Also find a ^{small} post
NW $\frac{1}{4}$ $\frac{1}{4}$ $\frac{1}{4}$ $\frac{1}{4}$ with a knot in.
(Write to him in regard to corner.)

At Hub No 15892.60 - I

went south 10 feet. - going
back to Hub No. 5

set a hub 10 feet south

This now makes me
 $50 - 10 = 40$ feet north of
line I started on.

Continue west —

16000

16200

16400

16600

16800

144

do

1911

137-30

17000 291

17200

17400

17430.2 Hub-

At 17430.2 - 50 feet south
20 feet - Telephone pole in line
Also set a hub 20 feet south at
15897.6 for a look sight.

This makes the line 40-70 =
20 feet north of line started on.
Continued west -

17600

17800

18000

18200

18400

18480 - Hub Trump 1/4 Corner
south side of 37.

1/4 Cor - S side 37 - N side 6
Wood notes -

To trace of corner

N. Bound Rec. 35-137-36 115

Friday May 20 " 291

Same crew etc.

Going to the cor- & sections
25-26-35-36, found an
8" x 8" ^{36"} cement mon- which
was set by crew.

75-76-35-36 - 1200. notes

Head Camp 14 N 10 E 15

" " 10 N 7 W 24

" " 8 S 75 W 27

" " 7 S 54 E 28

Run west 80⁵° far -

30 enter thick poplar brush
no cross rd road SW + E

400

600

800

1000

1100 6.40 1200

21700 1270 enter dry lowland

1400

1460 - on rd road N E + S W

1600

1800

116

291

do

137-30

7000

7091.50 Hub

7200 enter bog alders

7275 leave "

7400 " "

7600

76 — No trace of 1/4 cor. bet

76+35

Good notes call for - M-U-2

Apr 5 N $3\frac{1}{2}$ E 75 = 16.50W on 7 S $17\frac{1}{2}$ E 12 = 7.92

& continue west —

2795.80 Hub

2800

3000

3200

3400

3600

3800 leave low land

4000

4125.25 Hub in cm ground N+8

4200 enter poplar thicket

4400

4600

137-30

291

4611.5 Hub

4800

5000

5130.6 Hub

5200

Saturday May 27- 1911
School Elections

Sunday May 28-
at Home

118 Bound Sea 34137-21

291 Monday - May 29 - 1911

Same crew etc

Cont. Friday's line west.

5780. Hub - Sings Sea Co. to

Sections 26-27-34-35

5400

5600

5670 enter lowland

5750 leave "

5800

6000

6177.10 Hub

6200

6400 Hub

6600

6800

1/4 Cor. - N. side 34. Iso. notes

call for - M. 16 U at 3 -

WP 16 N 12 1/2 E 15 = 9.90

WP 17 S 50 E 28 = 18.48

7010

7061 Hub

7200

7400

7530 enter same zone N. W. + S. E.

Do

137-30

119

7600 in aug

291

7700

7870 leave " 7 W. SE

7970 - no trace $\frac{1}{4}$ cor, fine
buried string.

7700

8164.70 Hub on hill

7700

8400

8600

8700

9000

9129 Hub

9200

9400

9600

9800

Tuesday May 30 -

Rained

120 N. Bound Su. 34-137-20

291

Wed. May 31-1911

Same crew, etc.

Con. Monday's line west.

NW Cor. Sec. 34 - Gov. notes call for
27-28-33-34

WP 70 S 70 E 21 = 13.76

WP 18 S 23 W 39 = 19.14

" 22.740 E 104 = 68.64

WP 71 46 W 50 = 33

10000

10200

10226.10 Hub

10375 enter low sand

10400

10500 leave "

10560 Dump Sec. Cor.

found ^{WP 30} line marked

R 30 W - which checks is

on the R 30 E - This continues
west for a check.

10600 enter marsh

10700 leave "

10800

11000

N Bound. Run 33-137-30

137-30

11200

11400

11459.50 Hubs

291

11600

11800

12000

12200

12400

12495.10 Hubs

12600

12700 - maybe Hubs 15 guess

12800

13000

13200 - Survey 1/4 cor.

1/4 cor. N side 33 - Gov. notes

N to U at 4

Dead Oak to N 63 E 110 = 77.60

Belt " 8 S 27 E 95 = 67.70

Notes 1/4 cor.

13295.35 Hubs

13400

13600

13800

14000

127

14200

do -

137-30

291

15111.10 Hub.

15867.70 Hub - east of wagon track
in main road. 7°45' E

East Bound Rec 22

123

137-30

Shur. June 1st - 1911.

Same and etc

291

Sitting on Cor 77-73-86-27,
near north - 8415' a

200

258.25 Hub

400

600

800

1000

1200

1400

1600

1787.70 Hub

1800

2000

2200

2400

2454 Hub

Cor - east side of Rec. 22 -

Geo. notes - P to E at 3

WP 307144W 75 - 16.50

Dead Pine 24557E 115 - 75.90

124

do -

137-30

291

7 E Cor. Ru. 22 - Soc. note
 call for - 14-15-22-23
 WP 18 7153 E. 12 - 7.97
 SP 16 S 19 E 33 - 21.78
 SP 8 S 59 W 20 - 13.20
 WP 7 7174 W 30 - 19.80

Note

I found a stake, about 30 feet
 high - being the NW Bearing
 tree marks visible. Also found
 an old miller string, with the
 the S E B.T. set back from NW B.T.
 7' 15" W.

at 2605.30 North, 1/4 Cor.
 bet. 22 & 23 - set east 10.30 feet.

137-30

125

Drilling on $\frac{1}{4}$ cor - bet. 22 +
23 - 5 min north 9°10' Var.

770

450

600

810

1000

1200

1400

1600

1800

2000

2200

2400 Hub

2600

At 2648.00 North, Re Cor to
14-15-22-23 - sets east
4.70 feet.

Found NE + NW - BST's. NE a big
slab - full height, NW a string
out to plane.

Set hub by man. All BST's
then stop 2 - 9°10'

High WP 30 N 73 E 7.92
WP 17 N 44° 30' W 19.80

291

179 291

137-80

Friday June 7 - 1911

NW Cor. Rec. 34

Rounds - Hall & S.

Set the NW Cor. Rec. 34
from the SW B.T. - a stub
17' cut high - holey burned,
but R 30W being plain.
Could not find other B.T.s,
did not find S E B.T.

Set cor by corner & mer.

8° 30' Var.

Did not take plumb -

Stub on S 73 W - 19.14 feet.

At 10559 feet west, NW
cor. Rec. 34 sets south
35.73 feet.

NW Cor. Rec. 33 - 137-80

At 15871.35 West - NW cor 33
sets south 147.85 feet -
Foundation set by curs.

SW Cor. Sec. 33 -

meas. taken from hub
No 15897.60 which is 50 feet
north of line I started on.

at 15901.5 feet west, SW
Cor. Sec. 33 sets south feet
11.70.

Hub No 15897.60 is 50 feet
north of line I started on (-1)
 $50 - 11.70 = 38.30$

"Length of line from SE Cor.
Sec. 35 to SW Cor. Sec. 33 =
15901.5 feet.

SE Cor. Sec. 34 sets —
$$\begin{array}{r} 3 \overline{) 15901.5} \\ 5300.5 \end{array}$$

$$38.3 \div 3 = 12.766$$

291

137-30

SE Cor - 34 sets at 5300.5
West and north 12.766

Hub No. 5280 W. being 1 foot
north of line - SE Cor. Set 34
sets 16.766 feet north

At 10486 feet South, on
N+S line, SE Cor. Set 34
sets west 73 feet.

Two Bearings at SE - 34
S 60° 39' E 6.85 feet
from S East 1.45 "

137-30 -

291

129

Saturday June 3 - 1911
Rounds - Hall and J.

Covering.

NW Cor. Sec. 35 - Dis. E + W.

Length of line by my survey from
NE Cor 35 to NW Cor 34 =
10559 feet.

Sov. chaining = $80 + 79.87 =$
10551.42.

NW Cor 35 sets -

$10551.4 : 10559 :: 5271.4 : X$

$X = 5275.3$

\therefore NW Cor 35 sets at 5275.3
West.

NW Cor 35 - Distance

N + S

Sov. chain from NE 27 to
SE 34 = 10560

My chain = 10486

Position of NW 35 for
N + S =

$10486 \div 2 = 5243$

130

137-30

∴ NW 35 sets at 5243 South.

H 291

At 5243 South - NW Cor
35 sets west 35.55 feet.

New Bearing - 80° 30' 10".

Pop 11 N 42° 56' W 42.70 ft.
Dug 10 S 57° 6' W 51.80 "

at 5275.3 West, NW Cor
35 sets south 75.10 feet.

x

Correction for line bet-
No + 27

At 5243 S NW 35 sets west
35.55 feet

165.30 sets west 5.15

2640 " " 17.80

3805.40 " " 25.70

4509.75 " " 30.50

Corrections for line
bet. 34 + 35

At 10486 S - E Cor 34
sets west 23 feet

5883.50	sets west	33.9
6850	" "	31.6
7200.15	" "	30.8
7628.10	" 29.8	28.58
8976.6	" "	26.6
9823.75	" "	24.50

Position of 1/4 post -
bet. 26 + 27 -

At 2671.50 R. and
west 17.77 feet.

Position of SW cor Sec.
34 -

At 10601. West and South
39.48. -

137

137-30

Position $7\frac{1}{4}$ post -
S side of Sec. 27 -

291

Bets at 7917.10 west and
south 65.41 feet.

Position $7\frac{1}{4}$ post
between 34 + 35 -

At 7864.50 South and
west 29.27 feet.

Position $1\frac{1}{4}$ cor - S
side - 28 -

Bets West at 13215.17
and south 101.79 feet.

137-30

291

133

Monday June 12-1911

A. Rounds & I (Horse Spring)
Set 2" x 48" galvanized pipe
monuments, well filled in
with rock, at the following
places - viz: 3-

137-30 -

Sec. 22 - N E Cor., S E Cor.,
and $\frac{1}{4}$ cor on east side.

Sec. 27 - S E Cor., and $\frac{1}{4}$
cor. on east side.

Tuesday - June 13-

A. Rounds and I - continuing
setting mons. - in rock -
(137-30)

Sec. 28 S E + S W Corner

" 33 S W Corner

" 34 S E and $\frac{1}{4}$ cor on
east side.

138

138-31

293

Monday - July - 17 - 1911.

A.P. Feller - Wm. Wagner, John Crossman
and I drove to S. Boundary Sec

31 - 138-31.

Sunny Day —

Sunday July 18 - 1911

Rained part of the day.

Towards evening it stopped
raining - we worked until dark.

Setting on S.W. Cor. Sec 31,
138-31 - which was previously
set by Curo (8" x 8" x — cement post)
3000 east - 9°50' Var.

200

400

600

715 foot of raise

800

293

South Bound. Dec. 31-138-3/35

Wednesday July 19-1911

293

1/4 cor - S side 31 - 1500. notes
call for - S (little S)

W.K. Cor West 657

Aug 10 7146 1/4 E 218 = 143.78

874.90 Hub

1000

1200

1374.70 Hub on hill at Big Cut

1400

1500 cm. meadow

1600

1650.40 Hub on hill

1760 enter dry sluv

1800

2000

2200

2400

2600 leave dry sluv

2775 enter " "

2800

2875 line " "

3000

293

134

293

do -

138-31

3210

3307.80 Hub

3400

3528.30 Hub on hill

3600

3700 in meadow

3800

3850 near "

4000

4074 Hub on hill

4210

~~4400~~

4450.35 Hub on hill

4600

At 4728.32 - Hub, which is
Cur's meas. for the mile.

The hub sets in his line.

Found his old hub lying on
the ground - which he notes
say, he set for the corner.

293

|- 3 1/2 - cor. set 11 feet

188-31

W

133

Swy cor. 293

S1215

cut

bridge

cut and out

cut

old valley

fill

cut

cut

cor

293

293 SE Cor, Sec. 31-138-31

At SE Cor Sec. 31-138-31 -
Cuts found NW WPBT,
and put in new bearings
as follows -

Red Oak 8" $N 41^{\circ} 4' W$ 41.15 feet
Birch 1" $S 47^{\circ} 16' W$ 47.21 "

Thursday - July 20 - 1911
A.M., we packed - and
in P.M. we returned home.

SE Cor - Sec 31 - Gro. Notes call for -
Bir 12 $N 62\frac{1}{4}^{\circ} E$ 32 = 21.12
WP 4 $N 37^{\circ} W$ 7 = 4.62
Bl Oak 4 $S 68\frac{1}{2}^{\circ} W$ 29 = 19.14
Asp. 5 $S 67^{\circ} E$ 22 = 14.52.

293

1911

138-31 1911

139

Monday July 24 - **11 158**

Forbes and I drove to
SE cor. Sec. 31-138-31.

Put ^{2" x 48"} in
looked over south line
of 31. - 34-33.

Sunny
B. road

—

100

11 158

138-30

SE Cor 23 - Sov. notes call
for - 23-24-25 - 26

Bp P 4 N 63 E 17 = 11.22

" " 4 N 44 W 24 = 15.84

" " 5 S 65 W 27 = 17.82

" " 4 S 40 E 7 = 4.62

SW Cor 23 - Sov. notes call
for - 22-23-24-25

Bp P 5 N 31 E 7 = 4.62

" " 4 N 61 W 17 = 11.22

" " 5 S 64 W 15 = 9.90

" " 4 S 43 E 3 = 1.98

cut

1/4 cor - south side of 23 -
Sov. notes call for - L to Kat 2 -

Bp P 8 N 10 W 27 = 17.82

" " 9 S 37 E 18 = 11.88

1/4 cor - south side of 24 -

Sov. notes call for - L to Kat 1

Bp P 5 N 5 1/2 W 8 = 5.28

" " 6 S 2 W 17 = 11.22

192

134-30

Monday - Aug. 7 - 1911.

In Billings - 4 are
In class.

134-30

3 E Cor. Sec. 3, Gov. notes - \square

Sum 5 S 79 1/2 E 218 = 143.88 ft

" 9 N 37 E 350 = 231 "

1/4 cor. on east side sec 3 -
Gov. notes - Pto E at 6

Pine 28 N 60 W 157 = 103.62

3 E Cor. Sec. 3 - Gov. notes -

2-3-10-11

Pine 76 N 50 E 10 = 6.60 feet

" 25 S 17 E 28 = 18.48 "

" 18 S 60 W 37 = 24.42

1/4 cor. N side sec. 2 -

Gov. notes - e -

Sum 10 N 23 1/2 E 14 = 9.24

Spr 7 S 28 W 9 = 6.94

Recorded 192

192
134-30 -

N E Cor. Sec. 2 - Gov. notes F.
B. Island 14 N 49 1/2 E 98 = 64.68
Sum 7 N 35 W 114 = 75.24
" 8 S 74 W 206 = 135.96

N Bound. Sec. 3 - 134-30

Sunday Aug. 8-1911.

Steve Collins - flag + chain
Merg Collins } at corner
W.R. Clow

Cont. line east from where
3 left of April 14 1911 - Page 84.

1400

1600

1800

2000

2200

2400

2450 enter N end small pipe hole.
2575 leave " " " " " "

2600

2640 Hub. Jump Sec. Cor.

at N E Cor. Sec. 3 - Gov. notes
call for - page 141.

Recorded

143
X Bound. Sec. V - 13430

192

A ind old stake - with old
marks showing, evidently the
old Gov. stake. Setting transit
on ground over hole & find old
stake of SE BT. No trace
of NE BT. (This surely the corner)
Continue line east for
a check.

2800

3000

3100 cross wagon road, N + S,
point across sug

3200

3400

3600

3800 leave sug - brush land

4000 Hub

4200

4400

4600

4700 enter sug

4800

5000

5200

192

1/4 cor. X side 2 - Gov. notes page 141
Recorded

192

7 Bound 2 - 134 30

192

Found an old stake - looks like Hall's - but no bearing trees - or strings. Did not use it.

Then walk $\frac{1}{2}$ mile east to the NE Cor. Sec. 7. Gov. notes call for - page 147.

Find a stake at north edge of river - with full markings, also B. B. B., which shows it was set by Co. Surveyor Bartlett. Standing beside the stake is a long piece of $\frac{3}{4}$ " black iron pipe, well driven in bank of creek.

This is evidently the corner.

Mr. How and Collins decide they will not survey Sec. 3 - on account of fall work - and expense.

192

Recorded

134-30.

125

1500. Notes for Dec. 9. 192

NE Cor. Dec 9-

Set iron for cor. no B.T.s

1/4 Cor. - on N side.

Set iron for cor. no B.T.s.

NW Cor. Dec. 9-

Set cor from old B.T.s (page 62)

New Bearings -

Bir 3 N 31° 40' W 15.75 feet.

Iron Dip 14 N 66° 47' E 17.94 feet
90 Val.

SE Cor. Dec 9 - 9-10-15-16

Pine 8 S 15° E 80 = 52.80

NP 12 S 29° E 87 = 57.42

Oak 7 S 60° W 56 = 36.96

1/4 cor. on East side - Bearings

Set from Bearings - page 74

1/4 cor. on west side Dec 9. 192

R to C at 5

WC South 53.6

Pine 7 S 45° E 84 =

Recorded

146 192 - 134 30

Notes - Sec. 9.

1/4 cor. South side Sec. 9 -

I to X at 4 -

Pipe line 6 N 70 E 30 = 19.80

Birch 5 S 30 W 24 = 15.84

MC No 18 -

Price 18 North 27 =

" 15 N 55 W 54 =

MC No 21 -

NP 20 S 30 E 16 = 10.56

Price 15 S 38 E 22 = 14.52

Wednesday - Aug 9 - 1911

East Bound. Sec. 9. 134 30

Cass County road.

Steen Collins chman + foreman

Hew.

Homan

Setting on S.E. cor. Sec. 4 -

an iron which I had set

Run south: $8^{\circ} 40'$

Recorded

192

134-30
East Bound Dec. 9 1934 1937
30

192

210 Rain in snow

400

600

800

900 leave camp

987.30 Hub

1000

1100

1320 Hub - Temp $1/16$ Cor.

1400

1600

1800

2000 Hub $6^{\circ}50'$

2200

2400

2600

At 2639.50 South, $1/4$ cor.
on east side of 9 sets east
20.78 feet.

Above Rev. was set by me
see page 74

Recorded 192

192 East X Bound. Run 9 -
134 - 30

Dillingon 1/4 cor - bet 9 + 10 -
Run south 90 Var

200

400

600

800

867.60 Hub

1000

1200

1320

1391.80 Hub

1400

1600

1800

1900 enter small round meadow

2000

2100 leave " " "

2200

2400

2554.90 Hub

2600 192

2640 Hub - Young Run. Cor.

at SE Cor Run. 9 100. north

call for - 9-10-15-16 -

On page 145 -

Recorded

134-30

144

192

Could find no trace
corner. Everything burned -
a few old trees dying at west
edge of meadow - (meadow
was formerly a slough.)

Dung. Sec. cor. sets about
60 or 75 feet west meadow
and about ~~at~~ center north
and south.

Thursday - Aug. 10 - 1911.

Rained. I worked on notes.

1/4 cor - south side sec. 10 -

Gov. notes call for - I to X at 3

Pine 38 N 52 E 38 = 25.18

Bir 8 S 11 E 35 = 23.10

Recorded

192

153

134-80

192

Friday Aug. 11 - 1911.

Steve Collins x

Wed. "

Thomson "

A.M.

No one knows where there
are any corners east, west or south
of SE cor 9, so I set transit
on Sump SE cor 9 and
run west 90 far.

I walked to the $\frac{1}{2}$ cor
on south side of Sec. 10 but
on found 9 old stations, marked
No B.T.

121.70 Hub on hill

200

400

585 into meadow

600

800

1000 into slus NE + SW

Then I set around slus, as
per note sheet.

192

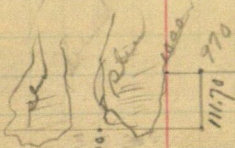
Recorded

South Bound Run 9-134-30⁵

134-30

192

N 72° W 1800



Sum
Rec'd

1760. leave water, meadow

1800

1860 leave meadow

1930.60 1st

2000

2200

2316 crossroad - Phil - P. R. N. & S

2400

at about 2542 - 1/4 section 1/4 cor
cuts south about 20 feet.

2600

2615 road N & S

2640 - Swamp 1/4 Cor.

1/4 cor. south side 9 - 1800. notes
coll for - page 146.

No trace of the rd.

continue west -

Recorded

192

157

192

Co

134-30

2724.40 Hub

2800

2817 enter small round meadow

2900 leave " " "

3000

3145.25 Hub

3200

3400

3480 Hub

3600. - 3740.50 Hub

MC No 1 - 1500. notes call for -

NP 70 S 30 E 16 = 10.56

Pine 15 S 8 E 77 = 14.52

I find a NP 70 ^{standing} standing about N 30 E - marked BT, but evidently done with a jack knife some years ago. I concluded the person that cut the tree down feshened the BT with his jack knife.

192 Thompson Collins was with Hallet when he surveyed here about 4 years ago, and says that Hallet found the above

Recorded

192

stump and set his corner
 2 W of it. There is a cross on
 the top of the stump which Homer
 Collins says Hallet put there
 so as to be able to locate just the
 stump later.

His notes call for both BT's
 A.E. As there are plenty of
 stumps around I think the
 notes are wrong, as it appears
 as tho the Norway was put
 in N 30 E and W P S - E.

Set the MC from Norway
 as follows -

N P Stp 20 N 30 E - 10.56

There are 2 W P stumps,
 badly burned, stand as fresh
 W P Stp - S 8 E - about 14.50
 " " S 8 E - " 13.50
 90° Var.

At 3751.30 feet west, MC
 M H stands south 20.55 feet.

500 chain from SE cor 9 to
 MC No 21 = 58.50 chs. = 3864 feet

Recorded

192

154

192

134-30

At MC 7071 - 5 feet in the dirt
 Poplar 47 75 (about) W 6.40 ft. to top of head
 " 4 S 10 " W 14.50 " " " "

Steve + I walked around the
 lake and had his c. line in (on
 my random line) approximately
 MC - 19 (2 square) set at river. This
 is where the field shows the M.P.

Sat. Aug. 11-1911.

So Pileage with Wm. Xristoy
 to see W. B. Jones in regard
 to surveying in section 9.
 Wm. Jones not there as I wrote
 him and went to Pine River.
Rate \$1.35

Sunday Aug. 13-1911.

192

Recorded

Monday Aug. 14-1911.

Leave Pine River 10:40 A.M.

134-80

192

153

Arrive at Pillsbury 12:33.

Fare \$1.37.

Rode out in Dec. 4-134-30
with W. Bennett.

Survey in Dec. 9-134-30
for Cass County continued
in Book No 13. page 53.

Recorded

192

138-27

Commence at 1/4 post bet. Sec. 23 + 26
thence east 40.19 ch. = 2651.2 ft
" " 39.80 " = 2626.8

Whereas our meas. reads 2661
ft. for the W. end and 2636 for
the east end, making a
diff. of 9.8' for the W. end and
9.8' for the East. - which you
see runs on mon. correct.

Taken from Harrison's
letter to F. D. Atwood - Jan. 29/11

1/4 Cor - bet 25 + 26 + at school H.

Harrison Bearing

17 157 3/4 W 37 55 feet

" 17 174 E 94.5 "

Out

844.0
196.5
1120.0
1320.0
2332.0
5812.5

5332.4 p. 30
4001.1 M.C. #

2271.5 E. 1381.3

4001.1
2745.0

Running W.
1381.1 to 0

6746.1
8.8

58.9

737.3 M.C. #

X 19 = 0°0'

397.50

2660

M.C. #9

S. 26° W 43' to 0.7

2433.7
2036.5
2732.5

26.4
2036.5

397.2

603.5

2036.5

18 12

224

S. 17° W - 16 1/2 M.C.

545

N.E. 4 89° 16'

66

844'S. to M.C. #10

511

611'E to M.C. #9

200' - 3.5 = 196.5 N. of Cor. on ice.

East line
N.W. 4 @ S.E. Cor. on ice = 91° 00'
West line

20.3

190.5

5 1/4 91° 05'

216.8 H & B

16.20

236.8 H & B Temp. 1/6

132.0

2656.8 H & B " 1/4

2332.0

4088.8

390

5378.8 to point - 11.8 E of temp Cor

151

N. & S. 1/4 R. N. 0°16'E

Road Approx N. 75°15'W

Int. at 2640+148'

S. 0°11'W

36'

688.8

688.8

N. 0°16'E

2049.0

N 49'

N. 0°22'E

2704.3

N. 49'

$$\begin{array}{r} 2036.5 \\ 611 \\ \hline 2647.5 \end{array}$$

$$\begin{array}{r} 2036.5 \\ 1587 \\ \hline 449.5 \end{array}$$

$$\begin{array}{r} 449.5 : 2036.5 : 1 \\ 16.5 - 3 \\ \hline 224.75 \\ 26970 \\ 4495 \end{array}$$

$$\begin{array}{r} 41675 \\ 41675 \\ \hline 6108 \\ 3087 \end{array}$$

$$2036.5 : 2640 : 15.8 : X$$

$$\begin{array}{r} 2036.5 : 2640 : 15.8 : X \\ 2112 \\ 264 \\ \hline 475200 \\ 40730 \\ 67900 \\ 61095 \\ \hline 68050 \end{array}$$

Paloke Iron Works.

my son

my white son-in-law

quite not a good writer.

2036.5

1587

449.5

Eq

Cl

Cell