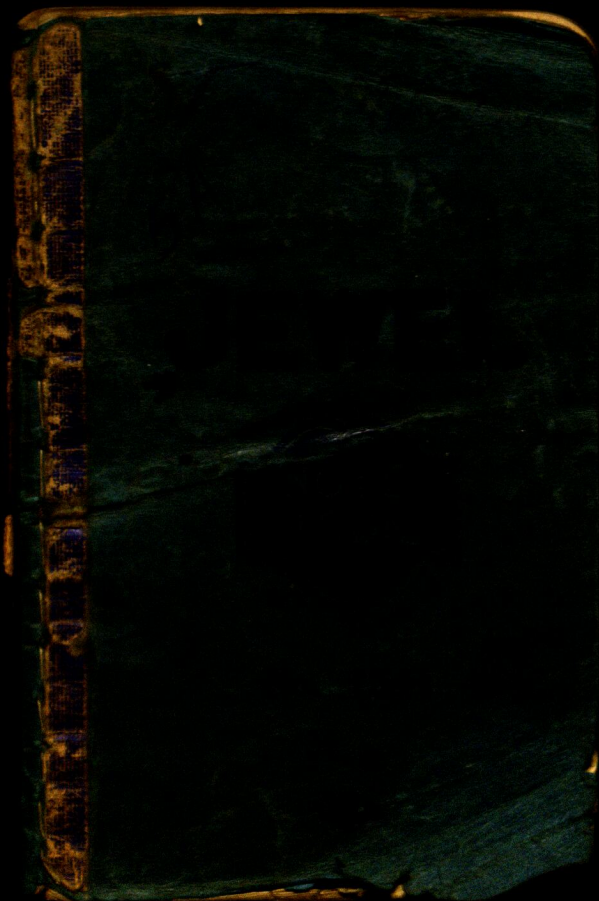


5A



Opened in Ryan
Box 282
H J C

1/22/11

Pat DeZalla
Hall
Cross Lake

copied from old
Books.

Ties to 1/4 Between
Sec 8-9 - 137-27
Book 249 - page 50

Ties To Pats 545-66
foot strip
NE Cor
Book 249 page 53

Says
R. Oak 8N 81°36'E 27.88
J.P. 7N 18°12'W 82.55
1P 10S 35°18'W 61.08
J.P. 12S 43°E 40.00

base

Ties to N $\frac{1}{16}$ bet 8-9-137-27

Br. Oak 4 N $53^{\circ}18'E$ 31.82

W. Birch 5 S $38^{\circ}33'E$ 40.15

To spot a base

From N $\frac{1}{16}$ to $\frac{1}{4}$ bet 8 & 9

137-27 distance is 1317.85

page 59 book 249

Ties to NW corner 8

137-27 cor to 5 6-7-8

Ties to Knudson Iron bolt

Oak 5 N $24^{\circ}30'W$ 41.6

" 3 S $44^{\circ}10'W$ 14.70

Oak 6 S $36^{\circ}30'E$ 23.20

Pop 3 N $43^{\circ}10'E$ 26.50

Page 6: Book 33

S $\frac{1}{4}$ Line Sec 8-137-17

@ 1240 W apt $\frac{1}{16}$ cor m

later set 2x26 IM

J P L N 59°10'E 7.50

" 6 N 3440 W 10.50

" 6 S 1650 W 7.20

" 6 S 6950 E 5.40

Pg. 82 Book 223

W side of 8-137-27

pg 29 - Book 33

034899

725.3

10469.7

17449.5

6979.8

24429.3

25312.447

999391

725.3

29981.70

49969.55

19987.82

69957.37

12485.82928

2° 00'

Sine 034899 x 725.3 = 25.315

Cosine 999391 x 725.3 = 724.86 W

Tang. 034921

550 48' = 34° 12'

Sine 562083 x 1990 = 1118.55 S

Cosine 827.081 x 1990 = 1645.89 W

Tang. 629.599

1143.865

484 45' = 41° 13'

Sine 658908 x 1734.7 = 1143.01

Cosine 752.223 x 1734.7 = 1304.8

Tang. 875.948

JWC Cape + I e

Crossed ~~the~~ drive my car

to NW for sec 8 137-2-7

Champs bet 7-8

at 1/4 S 1/2 bet 7-8

for change from S with

Tower 1/4 bet 8-9

at 1/4 on N 1/2

S 87° 43' W

along highway

road for 1/2 mile

on corner of house

Tower Hat by To let

Turn L 2° 00' on S of W 2°

at but on ice then a north

course 725-30

123.3

63

183.

Trace 2nd location

B S N 88° E and on

S 55° 48' W 1790

To 5th

Trace 3rd location

N 48° 47' W 1734.70

To 1st

From 1st to 2nd

Change W 243.16

up to 1st high

@ 300 ft @ 312 ft

@ 320 ft @ 330 water

@ 350 ft on ice

838, 7 ft from ice

- 387 800 L V hole

Front spring removed
continued @ 46.5
L 12" J 1.7

@ 300 m/s

473 m/s 15% w/s

475 m/s 112.6 m/s

~~9.5 m/s~~

838.7

465

883.2

1158.7

838.7

473

13.3.7

1.2.6

1486.3

1195.7

1330.4

① March 27

A over stake on ice

164.9 W $9\frac{1}{4}$ Take

shore line of pond

stand

course

262 East on line

218 S $72^{\circ}30'E$

175 S $71^{\circ}30'E$

125 S $71^{\circ}30'E$

122 S $53^{\circ}30'E$

160 S $34^{\circ}E$

232 S $29^{\circ}E$

270 S $24^{\circ}30'E$

255 S $12^{\circ}15'E$

218 S $2^{\circ}30'E$

212 S $14^{\circ}15'W$

250 S $19^{\circ}W$

265 S $32^{\circ}20'W$

295+10 S $36^{\circ}50'W$

Book

279

2

(2)

Stations	Course
323	54° 35' W
303	55° 9' W
30 9	566° W
7248	572° W
175	560° W
150	578° W
178	N 75° 30' W
275	N 52° 45' W
270	N 53° 40' W
160	N 52° 30' W
72	N 22° E
82	N 29° 30' E
155	N 21° 30' E
175	N 28° 50' E
172	N 44° 40' E
40	N 57° E

(3)

S Tada

Course

262

N 68° 15' E

278

N 80 E

275

N 85° 15' E

Copied in
279

Requiesce

$$600 + 182 = 782$$

on 16 1/2 off N

@ 782. E Turn 90°

and run E on track line

Sec 26 - 14131

Crescent Beach

Ten Mile Lake

Alvin Lockman

2 hrs.

Lv Walker @ 1-20
Pick up Edward Y TZEN
at Sunset Beach @ 2 PM
go N 16 cor

IM sand chain E.
@ 300 p.m. @ 382.5' hat.
60' up to road. @ 423.5'
with hat .50 N of IM Lot Cr
@ 600 p.m. @ 668.15' Hat
at top of road.

@.708.5 IM MC on ice
wall @ 711 Top of Seawall

@ 730 center ice

@ 823.2 wood hut on
ice

Area 823.2 Vu @ 90

into E on stake on ice
and run S Take shot
time 225 - 15

Stada	Com	Top SW
225	S 47° 48' W	W 15
390	S 39° 25' W	15
542	S 37° 15' W	22
645	S 32° 17' W	16
760	S 25° 19' W	18

From sta 0 = 823.2

run S $18^{\circ}54'W$

885 To sta (1)

Over sta 1 BS N $18^{\circ}54'E$

slide reads same as

150 N $13^{\circ}51'E$ 10

61 N $59^{\circ}45'W$ 12

160 S $46^{\circ}02'W$ 18

275 S $41^{\circ}28'W$ 16

320 S $42^{\circ}09'W$ 18

From (1) BS N $18^{\circ}54'E$

and run N $62^{\circ}30'W$

76.08 to junction S. and

Trail from

S $30^{\circ}46'W$ 76.98

25.46 (2)

Tower Sta 2

BS N $32^{\circ}46'$ E on Sta 1

and continue to shore

stadia scale course back

310 N $18^{\circ}06'$ E 20

126 N 8° E 18

125 N $0^{\circ}05'$ W 18

72 N $40^{\circ}13'$ W 16

125 S $81^{\circ}22'$ W 20

240 S $72^{\circ}17'$ W 18

365 S $68^{\circ}50'$ W 18

440 S $65^{\circ}35'$ W 18

510 S $59^{\circ}25'$ W 18

565 S $52^{\circ}15'$ W 20

590 S $43^{\circ}09'$ W 18

645 S $35^{\circ}33'$ W 18

740 S $33^{\circ}03'$ W 18

From Sta 2 run S.

530°03'W 8.88,000

To Sta ③

From 2 run N 45°E

86 to To apids in

to run

work from 2-6

4 hrs.

March 28

1443-

710

13261

89

1614 1870 2500

1627.9

Reg 10-30 AM
Stop @ 1 PM snow
Now Sta 3
DSN $30^{\circ}03'E$
Take shore line

Sto da	Course	Dist
445	N $25^{\circ}02'E$	14
310	N $23^{\circ}53'E$	14
141	N $12^{\circ}20'E$	14
102	N $14^{\circ}20'W$	14
155	N $61^{\circ}12'W$	14
255	N $74^{\circ}30'W$	12
405	N $80^{\circ}30'W$	18
530	N $81^{\circ}47'W$	18

From Sta 3 to station
to base

from Sta (3) to N 85° 50'

W 1002.3 to N 84° 50' W

To Sta (4)

To Sta (4) BS N 85° 30' E

W

from shore line

Slide Road Course Bank

390 S 87° 24' E 15

255 N 75° 48' E 90

point of deep over Marshall

meadow about 20 ft wide

135 N 52° E 14 Top 14

125 N 24° 33' E 14 " 14 "

145 N 7° 13' E 15 " 15 "

208 N 2° 30' E 14 " 6 "

280 N 0° 38' E 14 " 4 "

300 N 2° 52' W 9 4

regals
stade course top up
345 N 10° 18' ^W E R 18 7

11° 09' :
From (4) run N 12° W

110.4
1010.4

To (5)

140 back
173 To FM

March 29

Lv. Walker drive to
Edward. Ytzen arrive @
11.15. wait a few minutes for
Ed. drive to ^{transfer} ~~independ~~

Over Sta O. Chuck Travis
lives on ice as it does not
seem to fit

Over 823.2 Ed, IM work
but since look E on but
@ 90° and in
S 18° 54' W O.K. To Sta ①

Over ① BS N 18° 54' E +
run S 33° 46' W off 1°
to Sta ②

From Sta ② Sta ③ into
31° 03' W

From No 2 spike on bank
into 49° E

From (3) Sta (4) into
N $84^{\circ} 50'$ W

Over 3 check shore
line

At Sta 400

440 N $26^{\circ} 22'$ E

200 N $23^{\circ} 10'$ E

Sta 4 to 5 N $11'$ W

Tower Sta 5 BS S 11° E

am

Small
Top only

580 S 24° E 12 18

570 ^{open} S $26^{\circ}35'$ E 14 20

510 S $29^{\circ}20'$ E 12 30

420 S $34^{\circ}30'$ E 12 36

350 S $37^{\circ}45'$ E 12 30

270 S $44^{\circ}40'$ E 24 30

190 S 61° E

IM to N $5^{\circ}22'$ E

173

quit @ 3:45 drive
back to Walker

Monday^{Mar} 31-1947

Edward Ytzen 1 hr.

Tower Sta D spike on bank
into N 61° 32' W

168 S 47° 15' W

280 S 42° 13' W

370 S 42° 30' W

Tower Sta (2) BSN 3346E

405 N 25° 45' E

300 N 18° 40' E

130 N 0° 05' E

70 N 40' W

132 N S 81' W

225 S 74° 18' W

310 S 72° 05'

413 S 67° 50' W

510	S 60°45' W
565	S 53°22' W
590	S 43°57' W
660	S 36°35' W
750	S 34° W

From 2 to 3 is 1188 ft.

Wed.

A.M. drive to Rimous
roads and drive back
to Walker dinner @ home
P.M.

Coyne & I in my car
drive to Ten Mile Lake
X over spike hat & at
road E of I.M.
run out road

X ^{Sta 00} over spike & road into
the river @ 70' West on I.
M and run S $30^{\circ} 47' W$.
273.5' To Sta ① Take side
of curve of road.

60	S $34^{\circ} 25' W$
130	S $33^{\circ} 30' W$
155	S $32^{\circ} 57' W$

Bye.

180	S 32° 24' W
200	S 31° 57' W
225	S 31° 28' W
250	S 31° 02' W
270	S 30° 33' W

5 ft E of sta ①

Across sta ① BS N 30° 47' E
and run X S 10° 29' W

422.65 To sta ②

Curves bet Sta. 1 & 2

From ①

20 - S 9° 30' W

40 - S 11° 22' W

65 - S 12° W

85 - S 11° 22' W

110 - S 10° 40' W

130 - S 9° 15' W

152 - S 8°30' W
176 - S 7°37' W
200 - S 7°18' W
215 - S 7°12' W
240 - S 7°14' W
260 - S 7°22' W
280 - S 7°45' W
308 S 8°06' W
330 S 8°40' W
350 S 9°07' W
375 S 9°43' W
400 S 10°15' W
420 S 10°36' W
5th W of Sta (2)

Over Sta 2 BS N 10°29'

E + run S 27°48' W

734.9 To Sta (3)

road course bet 2-3

From 2 on

225 S 26° 50' W

320 S 26° 40' W

400 S 26° 38' W

500 S 26° 55' W

550 S 27° 05' W

615 S 27° 15' W

670 S 27° 30' W

705 S 27° 40' W

725 S 27° 00' W

Φ, 7 ft W of Sta 3

From 3 125 N 27° 48' E

and run S 51° 04' W

571.5 To Sta (4)

read corner

(Note) @ Sta 4 snap 35 ft

West @ 100 W edge of line

snap

135 S 40° 10' W

180 S 41° 40' W road corner

ump

250 S 45° 04' W

340 S 48° 20' W

400 S 49° 38' W

From 3 run S 51° 04' W @

90 cross grade into ramp

@ 257 - LV ramp West 9

@ 571.5 Sta (4) 5 1/2 E of E

Point (4) BS N 51° 09' E @

run S 63° 25' W

316.9 To Sta (5) 7 1/2 E of E

road corner

75 S 68° W

over

141 S 59° 50' W
202 S 60° 25' W
245 S 61° 10' W
280 S 62° 30' W
318 S 63° 36' W

Turn Sta 5 BSN 63° 26' E
and run N 50° 07' W

545.0 To Sta ⑥ left side
road curves

42 N 64' W
80 N 59° 44' W
125 N 53° 40' W
180 N 49° 25' W
220 N 48° 53' W
275 N 48° 55' W
340 N 49° 45' W

425 N 50° 27' W

480 N 50° 30' W

505 N 50° 14' W

540 N 49° 34' W

Turn sta 6 BSN 50

S 50° 07' E and run

N 31° 57' W 221.05 T. Sta ⑦

curves of road

65 N 31° 57' W

130 N 33° 40' W

165 N 33° 26' W

220 N 32° W

Turn Sta 7 60° 41' E

in 6 BSS 31° 57' E

IM sets S 59° 15' W

122.8

road continues
N 21° 30' W about 200 ft
Then Westerly

Monday 29603
Apr 14 - 47
P.M.

Tues to $\frac{1}{4}$ Center

SE $\frac{1}{4}$ Sec 26

141-31

W 0 6 S about W 16.75

W Brn 6 S "45 W 18.60

chain W

@ 300 pin - 36.5 \pm 16 W/P

18.2 W/P

@ 470 LV ramp

@ 586.3 spike hub on top

+ 2.31 = 817.3 pin

+ 525 = 1142.3 spike hub

on top + 308 =

1450.3 spike

hub I.M. into S 3.65.

Monday

South on Va Line

Dec 26 - 141-31

@ 55 enter ramp NW
SE

@ 400 LV W - S

@ 415.5 sub.

@ 600 enter ramp

N + S - 30 Then West

@ 720 LV ramp E + W

@ 790 enter ramp

@ 900 pin

@ 1050.8 split & road
1st offcut

+ 162.7

12135 sub.

1050.8

183

12338 E WP Trs

1050.8

278.5

1329.3

I.M.

Tower Sta (3) on Road

BSN $27^{\circ}48'W$

and run $80^{\circ}01'E$

S

247

Went from I m Center SE $\frac{1}{4}$
ramp

@ 100 W south 100 ramp 100 wide

@ 200 W ramp 60 - 100 wide in N 45

@ 2635 ramp 505 then SE

N 100 ft then NE 300?

@ 470 LV ramp

@ 1000 West draw NE, SW

SW 150 then west

114230 hub

Too 4 1450.3 + 20 ramp

@ 55 enter ramp @ 100 ramp 150 ft

Corrections 0° 13'

16907541 - ~~00~~

Corrections of N line =

S $\frac{1}{4}$ line Sec 26-141-31

apts on bank is 40.35 W

of I.M. M.C. goes South .07

apts Lot cor is 282.7 W of

I.M. M.C. goes S .48 to I.M.

which is .50 S of apts Now

I.M. $\frac{1}{4}$ Cor. Center S E $\frac{1}{4}$

Sec 26-141-31 which is

708.5 W of M.C. goes S 1.20

To True point for cor.

apts 1450.3 W of $\frac{1}{4}$ is

2158.8 W of M.C. and goes

South 3.65 to I.M. now

set in place SW cor Lot (27)

B.S on center of Lot (27) Turn

45° and run West on S side

of street

Ties to M.C. between 24
35-141-31 on east side
W.O. 14 S 21°27' W 21.70
W.O. 24 S 50°26' W 13.25
Ark 14 N 77°53' W 43.90
To spots at Base

Chain West @ 290.1
spike in road. 3 ft W of W
wheel track

Turner hub 290.1 BS
N 89°25' E and run
S 25° W 150.9 set sta @
Turner sta @ BS N 25° E
and to the sta of w.p.

20-S 74°40' W - 40 S 20°30' W
60-S 12°10' W - 80 S 0°30' W
110-S 4°10' W - 155 S 12°22' W

over

2015 7.5

190 S 20°15'W - 215 S 25°30'W
220 S 29°40'W - 210 S 35°W
200 S 31°20'W - 160 S 32°W
135 S 37°50'W 80 S 42°20'W
50 S 56°30'W 45 S 75°W
290.1 + 25 = 3151 inter mp
290.1 + 226 = 516.1 lv
mp @ 590.1 stake

111

Wed

152.1

152.1

33

506

Apr. 16, 1947

Coyne & I go to Backus
to ~~spike~~ @ cor 10-30

From 27-28-33-34-139-30

From Temp cor chain

S @ 152 L^u sup + 2001 =

@ 352.1 spike but on top

(From Temp cor chain
N 156.3 To spike on top) 241

From 352.1 S + 57 =

409.1 foot of hill enters flat

352.1 + 106.2 = 458.3 spike

but in W edge of back of 7" Elm

stamp @ 506 enters swamp above

of lake ⁶⁰² NE - almost W

352 + 270 = 622 ~~spike~~

enters open area NE SW

2nd AM: Coyote & Jalisco

Dinner with Blackfe

P M Blackfe aw. 1.15

$352.1 + 300 = 652.1$ per
 $+ 300 = 952.1$ per drive
 $+ 300 = 1252.1$ " "
 $+ 300 = 1552.1$ " "
 $+ 300 = 1852.1$ " "
 $+ 291.2 = 2143.3$ spike underwater
on gross profit

Stada reading to spike

N side of creek @ mouth

$6.11 + 6.11 = 12.22$

Stada reading to spike

over creek $7.05 + 7.05 =$

14.10

48
199
N From hut 156.3 chain
N 115.4 = 271.7 spikes

156 + 136 = 292 Nudge
of V. d. ⁿ further up around
lake E and SW ^w

356 ⁰⁰ to new edge open
are

From ^{trap} cor to 27-28-33-34
chain W @ 282.75 spikes

hut @ 713.6 spikes +

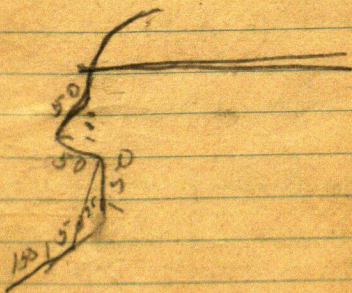
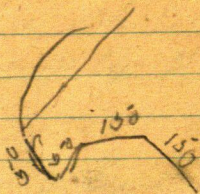
287.2 = 1001.3 ²⁸⁷ spikes hut +

241.8 = 1243.1 " " as find

45 ft E of water edge

300 ft E of water water is

N 200 ft



70 300
69
231

Compass over Sta 1
S. edge of swamp ligo N 20° W
150 ft
North 150

run N 65° E 90 ft = 30 paces
swamp extends 30 ft R.
run N 65° E 30 paces on 90 ft
enter swamp @ 160 to swamp
point of swamp extends E 30 ft
Sta ①

Compass @ Sta ① run
east edge of swamp ligo
N 20° W 300 ft - being
feet of full.

From ① run N 12° E 25 paces
75 ft Top of ridge Sta ②
Compass over Sta 2 run
N 18° W @ 20 paces swamp
498 L 30 ft @ 45 paces swamp

To sta (3) - sup

From sta 3 run N 15° E

46 ¹³⁸ paces sta (4)

@ 90' sup 20 L

Compass @ sta (4) sup

lies NW 50 ft N 50 ft

E 50 ft

From 4 run S 57° E

@ 25 paces 75 ft

sup @ 125 LV sta (5)

sup center to R 50 ft

Compass at sta (5) run

N 30° E @ 25 ft sup 40 L

@ 75 sup 30 E @ 63 paces

sta (6) @ edge of sup

fall green spruce 18'

Top of 20 ft ridge 100 ft right
Compass @ Sta (6) runs

N 52° E @ 100 m panning

a little N @ 165 foot of hill

@ 160 sta (7) Top of 15 ft

ridge 25 R. runs 25 ft

Compass @ Sta (7) runs

N 15° E @ 13 paces runs 100 ft

wide but 30 ft. - (B.S.)

@ 38 paces - 17 4 ft sta (8)

pt between two runs 4 ft 5 ft 3 ft and

compass @ Sta (8) runs

End of run p. by 545 w 30 ft.

and w 20 ft to 25 ft.

See

Acc. Camp No 2

W end of 2nd camp Recd
N 15° E 100 ft. S side same

camp lies N 70° E - 60 ft

Thence E Top of ridge lies at
75 ft

We run

N 87.5° W 45 steps to (9)

Compass over Sta (9)

camp lies S 75 ft. run

S 65° W 35 steps to Sta (10)

camp lies S 20 ft. S 45° W 20 ft

From Sta (10) W 40 ft

From Sta 10 run N 47.5° W

@ 44 steps = 172 ft to Sta (11)

leaving 16" WP on E edge of

camp.

Compass @ Sta ⑪ run

N 16° E @ 50 sup 40 L

@ 33 steps = 100 ft Sta ⑫

Compass @ Sta 12

S edge of imp 16" run

From ⑫ run N 70° E

@ 50 sup 10 L @ 47 steps =

141 ft Sta ⑬ S edge of imp

(Note) let ⑫ - ~~10~~ sup in

300 wide Sta ⑬ 175 wide

From Sta ⑬ run N 66° E

@ 25 ft into sup @ 50 sup 10 R

@ 90 L @ 62 steps

186 ^{185 ft} Sta ⑭ sup 200 wide

From ⑭ run S 70° E 77

steps = 231 ft Sta ⑮

sup line NW 15 ft sup line

North 75-100 ft.

N line reads ¹³7° Var

From Sta (15) run N 26° E
45 steps to Sta (16) on
top of ridge in plain west
40 ft NW 50 ft N 110

Can run run N 53° E 50 ft
- 150 ft Sta (17) on High Land
Low land line N 70 W 100 ft

N 10 W 75 ft North 75
run N 45 E 150 ft. Sta (18)
ridge top N E 40 ft N 70 E 110

From (18) run N 60 E 150

from 18 run N 31 E over
ridge. @ 60 steps 40 R @ 90 steps
75 R @ 40 steps 120 ft
over ridge. @ 125 Sta (19)

From (19) run N 15° E 26 steps
To pt. on line ^{N 78 1/2° E} 85 ft W of IM
C. on SW 1/4 sec 26 = 14 ft 31

Thurs.

H J C alone P.M. 2.30

Var 7°
Compass at Sta ② on road

run West 145 ft but says

says bears S 12° W 150+-

North 25 ft sta ①

compass over sta ① - 25 ft N

run N 15° W 100 ft stop

② up 20 ft L

from ② run N 3° W 90 ft
to sta ③

from ③ run S 72° W @

@ 25 enter sup @ 60 LV @ 45

sup 10 R @ 150 ft says 10

L @ 210 sup 20 L @ 15 R

old dirt road, runs S 20 W

N 20° E with north compass

@ 210 sta ④

compass @ ④ run S 38° W

@ 75 edge of sup @ 180 sta

⑤

compass @ (17) run

S 48° W @ 45 sup 20 L

@ 90 sup 15 L @ 100 sup

@ 90 sta (18) of

from (18) run

N 60° W @ 30 sup edge

@ 60 sta (19) run

S 55° W 45 // to sta (20)

10 ft E & 10 E of sta

from (20) run

S 30° W @ 25 edge of sup

110 sta (21) run

S 47° E 45 // to sta (22)

from 22 run

N 87° E @ 90 sup 10 L

120 edge of sup @ 150 enter

sup 180 sup 20 R @ 210 - 15 R

@ 225 over sta (23)

238
117

141

33
117

from 23 mm

N 39° E @ 45 edge of map

@ 75 map 15 L @ 105 edge

of map Sta 24. mm

S 70° E @ 30 map 25 L

@ 50 edge of map @ 117 road

From sta (3) mm to

sta (2) @ 180 map 75 L

@ 330 map 40 L

From A
S 58° W 21 map

566W30 →

April 28-47

Ryans Gull Lake

JWC - HWC.

stake of dirt & gravel

Corner IM Ryans NW Cor.

NW Cor Lot (2) Site S 81° 07' W

on on IM over pond

75 S 20° 12' W end of Colwell

181 S 5° 59' W end of lot road ^{SW corner}

189 S 041° E

Same S 7° 28' E L

160 S 15° 46' E L

155 S 27° 16' E L

180 S 41° 18' E L

208 S 80° 56' E L

222 S 81° 07' E OK IM, for

218 S 84° 58' E

256 - S 88° 44' E ²⁰ 1/2 E

281 - N 84° 59' E IM MC

270 N 79° 37' E

298 N 73° 58' E

over

325 N 72°10'

290 N 69°54' E

260 N 73°15' E ^{260 72°40'}

242 N 69°03' E

252 N 67°51' E

250 N 65°30' E - NE corner of road

Take dirt pile N 73°40' E 250 to 260

²⁵⁵ 242 N 78°50' E

235 N 81°15' E

188 N 85°24' E

170 N 86°58' E

162 S 88°13' E NW corner of pile

180 S 83° E SW corner

222 - S 88°21' E SE corner of pile

Back to N edge of road

200 N 65°10' E ^{road 2 1/2 ft}

N 63°25' - 200 N 52°05' 70 ft

35 E 15 ft -

Ten Mile Lake

May 6, 1947

Glenford Miller & I

in my car L.V. Walker

9:30 drive to Ten Mile

Lake π

Tower Sta ④ BS N 51°04'

E on Sta ③ and run

South We can not get
through so extend line

S 51°04' W. from Sta ③ through

④ 1 ft then run South

@ 300 pins @ 375' spike 60°

for hub @ 475' - hub 60° spike

@ 672.4 - 60° spike hub on

Edge of wet mps. S mps

bears S to seawall and N

50 ft. 672.40 + 185.2°

857.6 over wet mps to spike

on sea wall over 2 pages

Ten Miles Lake
May 7-1947

Hess-Walt and I & V
Walker in my car @ 10 o'clock
drive to Ten Miles Lake
Tower Sub. 475 ft South
of Sta (4) Turn 90° and
run West @ 100 spikes
Sub. @ 400 pins + 25.3 =
425.3 spikes Sub. 10 ft E
of Brink @ 5,44.1 spike
Sub. in our N+S line
200 ft from Sta (6) @

Ten Mile Lake

May 6, 1947

Tower Sta (6) BS-550°07' E¹⁷
and Run S 47°30' W

226.4 To 60' spike on
Sea Wall

Sta 6 is 6 ft SW of 2 of road
chain S 47°30' W

@ 80 enter wet low land
10 ft. to R.

@ 125' up 75 R

@ 226.4 spike on sea wall
ramps lie along sea wall
150 ft +

Tower Sta 6 ramp lies
South 90 ft

Tower Sta 6 run S 39°07' W

100 ft. N & to mud water in dune

200 ft. & set 60' spike

42
3
176

Tower spike 200 ft SW
of Sta 6

Run $S 0^{\circ} 20' E$ spike on
sea wall, all low wet land
From 200 ft hub foot of
ridge along road is 126 ft
 $S 50^{\circ} 07' W$.

From spike 200 $S 50^{\circ} 07' W$
of Sta 6 chain $S 0^{\circ} 20' E$
@ 300 m L + 25 to foot
of ridge wet up 20 R
@ 345 edge of wet up
@ 475 foot of rain @ 500
bank of 3 ft rain Ridge
110 L to foot
@ 500 S up 100 R
@ 600 foot of ridge 65 L

600
451
5549

- @ 696 pt of ridge 18 ft L
 - @ 775 spike on sea wall
 - @ 765 ridge is 36 L
- slips to seawall S

LV Walker 9-30

LV Ten Mile Lake 6-30

only May 7-1946

Brought from 2 pages back

Spike @ intersection of
two lines is not true inter-
section on line from E but
not N + S this spike is

^{544.1}
672.4 W and 554.9 South
from road, ~~to road~~

San Mateo Lake

113.4

May 7-1946

Tower limb: 290.1 BS on MC

min West on sec line

bet. anchors 26-35

$290.1 + 300 = 590.1$ min

set by Coyne & I

then & I chain West

Waltcut line $590.1 +$

$150 = 740.1$ ^{enter} ~~surp~~ ^{surp} ~~down~~

NW-10 Ft. and SE $590.1 +$

$190 = 780.1$ LV ~~surp~~ ^{surp} ~~+~~

$590.1 + 300 = 890.1$ min ~~+~~

$113.4 = 1003.5$ spike limb.

$1003.5 + 128 = 1032.5$ ~~old~~

on new road NE-SW $1003.5 +$

$242 = 1245.5$ enter wet ~~surp~~

surp is too wet

$$\begin{array}{r} 891.1 \\ 1334 \\ \hline 1004.5 \end{array}$$

$$\begin{array}{r} 458 \\ 242 \\ \hline 216 \end{array} \quad \begin{array}{r} 1004.5 \\ 458 \\ \hline 1462.5 \end{array}$$

so with π at sub 1003.5
take intada star edge of road
over sup from π to edge of
road = $458 \text{ ft} - 242 = 216$
over sup. to pin 2 ft ^w from
edge of road = $1003.5 +$
 $458 = 1461.5$ to pin $+ 10.4 =$
 1471.9 spike in E Road. $+$
 $1 + 40.45 = 1512.35$ to spike
to 40 N of I M.

From π in E Road sup -
50 ft edge of sup follows
line to edge of road.

Sup From sub 100 ft S pin
sta @ 86 sup R 50

@ ~~250~~ 225 " R 50

@ 235 into sup

quicks @ 5-30 P.M.
work - 10 To 5-30 -

Ten Mile Lake
May 22? 1947 - Thur.

Walt & Glen and I Lv Walker
in my car @ 8.30

Gas \$2.00 Oil .25 Spikes 80¢

drive to Ten mile Lake set

spike 1.20. S of I M $\frac{1}{2}$ mi True

point for car out over N ridge of

I.M. at 1st car and set spike

in E road on True line

@ spike 40.35 W of M.C. set

spike .07 S. Tower. new spike

@ 40.35 on True Line

Van @ 90 look east on I M

look West and hit 7" W.P.

set 60 d spike 3" E of same

From 40.35 we run S $24^{\circ}10'$

W on top of ridge @ 100

60 d spike car to hit 1-2 - 10 ft

May 22

W of Brink - Water about 30 E

@ 200 - 60th spike Cor to Lots

2-3 Brink 5 E Water about 30 E

@ 300 - 60th spike Cor to Lots

3-4 - Brink 5 ft E Water about

30. 300 is sta (1) Over 300

B.S N 24° 10' E Take Ties

N.P. 16° N 57° 17' W 35.90

W.O. 10 N 9° 30' E 14.33

From 300 run S 33° 30' W

@ 100 - 60th spike Cor to Lots

4-5 on Brink Water about 25

@ 200 - 60th spike Cor to Lots

5-6 - Brink 3 ft water about 40 ft

sta (2) Ties to Sta 2 = Cor to 5.6

R 08 N 4° W 24.5

R 08 N 78° 08' W 42.6

From sta (2) run S 0° 30' E

May 22.

@ 100 - 60^d spike cor to lot 6-7

B 12 W water 35^E

@ 200 - 60^d spike cor to 7-8

Brink 10 W water 45^E

@ 300 - 60^d spike cor to Lots

8 & 9 Brink 5^E Water 45^E

P. M.

Run over 60^d spike ϕ of road

43.6 W of I M back of lot

on true line

Var sit @ 90 Look W on

True line and run

S 30° 52' W @ 85 - 60^d spike

cor to Lots 1-2 - 6 ft E $\frac{1}{2}$

@ 170 - 60^d spike cor to Lots

2-3 - 5 ft E of ϕ

84
2.5

May 22

@ 255 - 60^d spike cor to Lots

3-4 in W wheel Tract

@ 272.8 sta ①

5 ft W of Φ

Now sta ① BSN $30^{\circ}52'E$

@ run $S 9^{\circ} E$

@ 67.2 spike cor to Lots

4-5

> Ties To Sta ①

WO 14 S $46^{\circ}11'W$ 41.20

WO 10 N $10^{\circ}38'W$ 34.20

From Sta ① run $S 9^{\circ} E$

@ 67.2 60^d spike cor to Lots

4+5 - 3 ft E of Φ

@ 152.2 - 60^d spike cor to Lots

5-6 in Φ road

May 22 -

@ 237.2 - 60¢ spike cor
To Lots 4-7 - 6 ft W of E

@ 322.2 - 60¢ spike cor to
Lots 7-8 in W wheel

Tract

@ 364.3' Sta (2) in E road
put @ 4 o'clock

rain

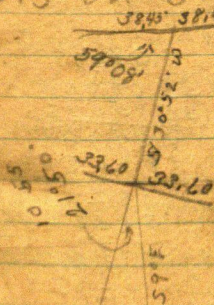
Note it has been raining
off on an all day

May 23 - 1947

Friday

Walt and I. L. Walker
in my car drive to Ten
Mile Lake arrive 9 o'clock
Town Sta 1.

B.S. on O. R. @ 60



10.53'

33.60

Cor. 981904 / 33

Town Sta 1 B.S. on Sta 0

Town 79005' R on L. corner

May 23

33.60 to lot line at 60°
spike

Turn the O on N Line
SW angle reads 59°08'

$$59^{\circ}08' = 30^{\circ}52' \quad .38.445$$

Sum, 858364 / 33 00000

25 75092

7249080

6866912

858364

25 75092

858364

858364

3821680

3433456

388224

3433456

6866912

3433456

448784

@ 38.45 set 60° spike on
1/16 Line W of road & for
R of Way west side of Plat

May 23- ⁸³
~~253~~

We set another 60' spike
E of E of road 38.45' for
the NW cor of Lot ①

To over NW cor Lot ① run
S 30° 52' West @ 85 = 60'
spike NW cor Lot ②

@ 170 set 60' spike for
NW cor Lot ③

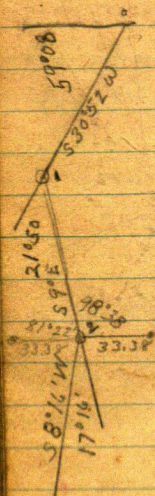
@ 255 set 60' spike for
NW cor Lot ④

@ 286.2 angle point on lot
line

$$\begin{array}{r} 89.60 \\ 83.2 \\ \hline 81.22 \end{array}$$

1716
8° 38'

May 23



Tower Sta 2

BS on Sta ① Turn

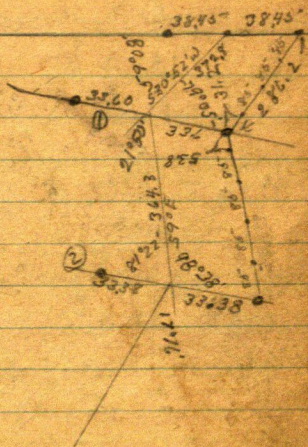
98° 38' R or E =

8° 38'

33.38

Cosine 988669 / 33

May 23



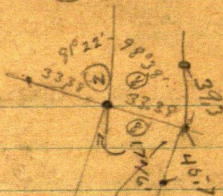
①



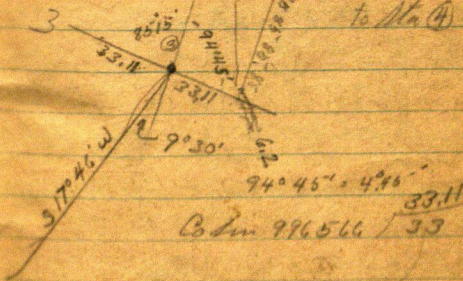
2

May 23-

(2)



6 46.7 9
 5 9° 16' W
 11 5 17° 46' W
 19 85 N 8° 16' E
 6 and run S 17° 46' W
 to Sta (4)



94° 45' = 4° 45'
 33.11
 33
 C. Sin 996566

May 23 - 1947

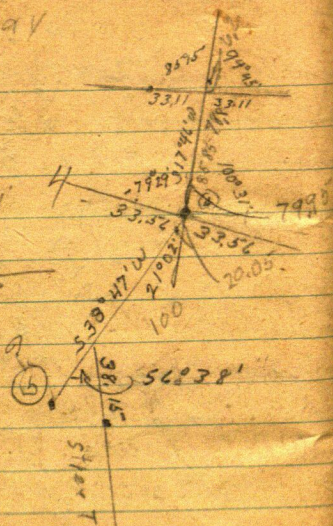
Friday

~~47 1/4~~

$79^{\circ}29' = 10^{\circ}31'$

Cosine

983202) 33



$56^{\circ}38' = 33^{\circ}22'$

38.43

Cosine 836168

quit @ 6.30

33000000
2595504
7044960
6681304
3636560
3340672
295888
2595504
2595504

May 24 1947 Sat.

Walt and I Lv Walker
@ 8-15 drive to Ten Mile
Lake set spikes on back end
of lot $\frac{1}{2}$ hr. Noon
- PM

T over NE cor of Lot 9
on lake BS $N 0^{\circ} 30' W$ on
NE Cor 6 Take Ties to NE 9.
WO 14 $N 4^{\circ} 36' W$ 26.90
Maple 16 $S 27^{\circ} 17' W$ 33.68

From NE Cor Lot 9 run
 $S 19^{\circ} W$ @ 100 set spike Cor
to 9-10 - 10 W of Branch to
40 W of water
@ 200 set spike to Lots 10-11
Rink 15 E water 30 E

Ties to 10-11

W.O 9 S $86^{\circ}13'E$ 7.6

W.O 7 S $37^{\circ}23'W$ 21.8

From 10-11 YUM S $28^{\circ}19'W$

100 ft set spike for 11-12

Brink 5 E Water 25 E

Ties to 11-12

cluster 3 W.O - 14 - 7 - 10 use S

W.O 14 S $51^{\circ}30'E$ 12.6 To top of

W.O. 12 S $75^{\circ}12'W$ 25.4

From 11-12 BS N $28^{\circ}19'E$ and

run S $45^{\circ}W$ @ 100 spike

Cor to Lots 12-13 Brink 5 E

Water 25 E @ 200 spike

Cor to lots 13-14 on Top of Brink

30 East Water

Trees to 13-14

Crooked Birch 5 N 23° 32' E 14.00

Maple 7 N 47° 33' W 7.35

At 13-14 BS N 45° E and

run S 34° 40' W @ 100

spike cor to Lots 14-15 on Brink

20 W of Water @ 200 spike

cor to Lots 15-16 Brink 3 W

30 W of Water

quit @ 6 O'clock

May 25-1947
Sunday Rains

May 26-1947
Walt & I in my Car
Lv Walker @ 9-15 drive
to Ten Mile Lake.
Tower NE cor Lot 16
BS N $34^{\circ}40'$ E and 1
M.C. bet 26-35 bears
S $17^{\circ}13'$ W 19.60

From NE cor Lot 16
run S $26^{\circ}30'$ W 100 ft

cor. to Lots 16-17 Brink 6 ft
W water 25 Note ⁴3 W.P. on 17

Tower 16-17 BS. N $26^{\circ}30'$ E
and run

From SW cor. 16th street
chain South by @ 120 at spike
cor to Lots 21-22 @ 240 spike
cor to Lots. 2, 3 @ 248
intersect street running
south,

From NE Cor 20
chain SW 100 ft to SE
Cor 20 and NE cor Street

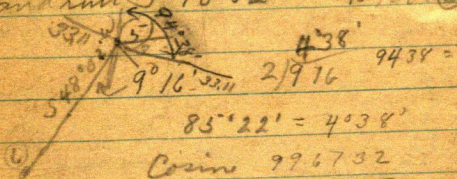
Wed

Walter L. Walker

arrive @ Ten mile Lake 9-30

From (1) D S N on 4 N 38' 47" E

and run S 48° 02' W to Sta (6)



$$85^{\circ} 22' = 4^{\circ} 38'$$

Cosine 99.6732

$$99.6732 / 33$$

$$33,108-$$

55

110

165

220

Check lot Line angles

Take NW cor Lot 1 on $\frac{1}{16}$ Line

run S $30^{\circ}04'W$ 286.2

To (1)

Run S $9^{\circ}02'W$ 364.3 To (2)

From (2) run

S $26^{\circ}18'W$ 646.9 - (3)

To (3)

run S $35^{\circ}45'W$ to point

8.7 S of NW cor 19 - bet 18-19

Sta (4)

From 4 Run

S $56^{\circ}46'W$

Ten Mile Lake
May 31-1947

Walt Glen & I drive to
Ten Mile arrive @ 10.

Travel SW cor of street
NW cor Lot 21

B.S. N $56^{\circ}46'E$ run

S $33^{\circ}14'E$ 155.8 To

SE cor Street S ft straight
a line to water

Travel SE cor Street

B.S. N $33^{\circ}14'W$ and

run S $27^{\circ}50'W$ 60 ft

To SE cor Lot (21)

Travel SE cor Lot (21)

B.S. N $27^{\circ}50'E$ and run

S $21^{\circ}01'W$ 60.6 To SE cor

Lot (22)

Travel SE cor Lot (22)

B.S. N $21^{\circ}01'E$ on NE cor

12173
1955
Lot (22) Run S $24^{\circ}30'E$

@ 60.05 cor to (23-24)

+100.95 cor to (24-25)

Then 24-25 BS, N $24^{\circ}30'W$
and run S $2^{\circ}21'E$ 100 ft
to cor to lots 25-26

Then 25-26 BS N $2^{\circ}21'W$
and run S $21^{\circ}47'W$
100.4 to cor to lots 26-27

Then 26-27 BS N $21^{\circ}47'E$
and Run S $28^{\circ}22'W$ 100.7
To cor to Lots 27-28

From cor to Lots 26-27
Run S $28^{\circ}20'W$ 201.65

To cor to lots 28-29

Then 28-29 BS N $28^{\circ}20'E$
and run S $57^{\circ}28'W$ 100.05
to cor to Lots 29-30

Across cor to Lots 29-30

BS N57°28'E and run

S76°27'W - 120 ft to cor to

Lots 30-31

Across 30-31 BS N76°21'E

and run S88°14'W

@ 100 cor to 31-32

@ 200 " " 32-33

Across 32-33 BS N88°14'E

and run N88°07'W

100 ft to cor to Lots 33-34

Ten Mile Lake
 Monday June 2 - 1947

J.W.C. gets Glen to go to Brainerd
 with him I pick up Walt
 stop @ Deeprock Gas 120
 Lunch 25. stop @ Court House
 stop at Al's Garage get new
 spark plugs 4.20 + 1.00
 @ 10 o'clock drive to Ten
 Mile

Turn SW cor Lot 29 run
 W 60-120-180-240-300

Turn 300 Run @ 90 B.S. on
 SW cor 29 and Run N 22° E

Coin 927184 ÷ 66 =

927184	71.183	
66000000		7721760
6490288		7417472
3363104	1097120	3042880
727184	927184	
6490288	1099360	
	927184	
	7721760	

T over 300 Run N 22° E
71.18 To N side Street
SW cor Lot 37

T over 71.18 run North
set spike in E road and two other
T still @ 71.18 run West 66 ft
set 60 ft spike West side road
Run E about 300 ft. +-
along N side of Street.

T over cor to 29-30 B.S. W

Turn $67^{\circ}30'$ R and run 71.44
To P.T. of Road.

$$67^{\circ}30' = 22^{\circ}30'$$

$$\text{Course } 923880 \div 66 = 71.44$$

To A.P. of St.

T over A.P. of Lot 27 B.S. N
and Turn L $67^{\circ}30'$ and run

N $67^{\circ}30'$ W 71.44 To A.P. of Street

71.44

923880 / 66000000

6467160

6467160

1328400

923880

923880

4045200

3695520

3695520

923880

3496800

2771640

2771640

725160

923880

7144

3695520

3695520

923880

6467160

600198720

Tower A.P. Lot 23

BS N $56^{\circ}46'E$ on Sta (4)

and run S $56^{\circ}46'W$ 78.9 over
 $56^{\circ}46' = 33^{\circ}14'$ street

Cosine $836446 \div 66 = 78.9$

$$\begin{array}{r} \overset{4334}{836446} \overline{) 78.9} \\ \underline{66000000} \\ 5855122 \\ \underline{5855122} \\ 7448780 \\ \underline{6691568} \\ 7572120 \end{array}$$

$$\begin{array}{r} \overset{8}{6691568} \\ \underline{6691568} \\ 0 \end{array}$$

$$\begin{array}{r} \overset{5445}{3836446} \\ \underline{3836446} \\ 0 \end{array}$$

$$\begin{array}{r} \overset{9}{7528014} \\ \underline{7528014} \\ 0 \end{array}$$

$$\begin{array}{r} \overset{1672892}{836446} \\ \underline{836446} \\ 0 \end{array}$$

$$\begin{array}{r} \overset{5}{4182230} \\ \underline{4182230} \\ 0 \end{array}$$

$$\begin{array}{r} \overset{3}{836446} \\ \underline{836446} \\ 0 \end{array}$$

$$\begin{array}{r} \overset{3}{2509338} \\ \underline{2509338} \\ 0 \end{array}$$

$$\begin{array}{r} \overset{125,631}{105-00000} \\ \underline{105-00000} \\ 0 \end{array}$$

$$\begin{array}{r} \overset{2}{836446} \\ \underline{836446} \\ 0 \end{array}$$

$$\begin{array}{r} \overset{2135540}{1672892} \\ \underline{1672892} \\ 0 \end{array}$$

$$\begin{array}{r} \overset{4626480}{4182230} \\ \underline{4182230} \\ 0 \end{array}$$

$$\begin{array}{r} \overset{4442500}{4182230} \\ \underline{4182230} \\ 0 \end{array}$$

$$\begin{array}{r} \overset{260270}{2509338} \\ \underline{2509338} \\ 0 \end{array}$$

$$\begin{array}{r} \overset{94362}{94362} \\ \underline{94362} \\ 0 \end{array}$$

Tower Ave, Lot 23 run
S $56^{\circ}46'$ W 78.9 over street
+ 120.53 to cor bet. Lots 30-36
From 78.9 chain S 275.35 to
A.P. Chain SW 89.4 to A.P.

Tue. June 2-1947
Ten Mile Lake

Walt & I take J. M.
drive to Ten Mile Lake
Lv. Waterloo 9:30
drive I.M. until it
starts to rain eat dinner
P.M.

Go over SW cor of N+8
Street BS N $56^{\circ}46'E$
and run S $57^{\circ}50'W$

$$57^{\circ}50' = 32^{\circ}10' \quad 124.04$$

$$\begin{array}{r} \text{Crain } 846503 \\ \hline 1105000 \\ \hline 846503 \end{array}$$

$$\begin{array}{r} 1693006 \\ \hline 2034970 \\ \hline 1693006 \end{array}$$

$$\begin{array}{r} 846503 \\ \hline 4 \\ \hline 3386012 \end{array} \quad \begin{array}{r} 3419640 \\ \hline 3386012 \end{array}$$

$$\begin{array}{r} 3386012 \\ \hline 336280 \end{array}$$

From SW cor of street run
S 57° 50' W 124.04, set 60 spikes
for SW cor Lot (35) as there is a

118.133
846503 / 100 000000
8 846503
6772024 1534970
846503
6884670
big Bass 6772024

Wood Tree 1126460
in the Way 846503
we chaining 2799570
Lot (35) from 2539509
260061
106 - to 100 ft and
set the spike @ 118.13 -
100 ft wide

From SW cor (35) BS N 57° 50' E
and run S 72° 25' W @ 104.9
set spike SW cor 36 Lot 100 wide

Continue S $72^{\circ}25'W$

@ 140 angle Point of road.

Turn A. P. 140 BS N $72^{\circ}25'$

and run N $52^{\circ}42'W$ 95 ft

To SW cor Lot 37. + cor of

N + S street.

Quit @ 6 o'clock

June 8-1947

Monday

Ten Mile Lake

A.M. Rain

P.M.

Walt & I in my car
With I.M. L.V. Walker
about 2 o'clock

drive to Ten Mile Lake

drive ~~in~~ rest of I.M. along
back of Lots

beg @ 1/4 line chain
along our stake line

@ 78.5' spike on 1/4 line

40.35' W of MC, drive in

I.M. for N.E cor Lot D

chain S.W. along our stake
line and set I.M. as

follows

@ 98.5 - @ 197.0 @

295.5 at I.M. for for S.E.
cor Lot (3)

@ 98.5 and @ 197.0 divide
I.M. S.E. cor Lot, 5

7.7 N.E. of sta (2) lot 546
chain SW 295.5 to T.P.
11.15 N.E. of old A.P. ✓

@ cor to 10-11 we have
gained 14 ft. we need 16.7

@ 11-12 we have 15.6

@ 12-13 we have what we
we need if we can hold
it From cor to 12-13 we
chain 100-

@ 15-16 we have 17.05 To old
A.P. 36.37 To I.M. M.C.

@ 17 old A.P. 17.1

Ten Mile Lake

Tues. Rain

Wed

Walt & I lv. Walker in my
Car. arrive Ten Mile Lake @
10 o'clock

Truck SW Cor Lot 37. & 54.

Read angle $52^{\circ}45' - 37^{\circ}15''$

Cosine 796002 82.91

$$\begin{array}{r} 796002 / 66000000 \\ \hline 6368016 \end{array}$$

$$\begin{array}{r} 4776012 \\ \hline 2319840 \\ 1592004 \end{array}$$

NIX

$$\begin{array}{r} 796002 \\ \hline 2278360 \\ 7164018 \end{array}$$

$$\begin{array}{r} 796002 \\ \hline 8 \\ 6368016 \end{array}$$

$$\begin{array}{r} 796002 \\ \hline 85 \\ 796002 \\ \hline 347418 \end{array}$$

$$\begin{array}{r} 2388006 \\ \hline 7164018 \end{array}$$

$$\begin{array}{r} 796002 \\ \hline 2 \\ 1592004 \end{array}$$

Lot 37 is 100 ft at road
Line E 9 ft

71.61
796002 157

Now SW cor Lot 34 run
S $28^{\circ} 23' W$ T P of N 45 St.
To Lake

$75^{\circ} 48' - 14^{\circ} 12'$ 688
Corm 969445 166

At still SW cor Lot 37 - BS North
and turn L $75^{\circ} 48'$ and run
N $75^{\circ} 48' W$ 68.80 To A.P. of road

At still @ SW cor Lot 37 run
S $28^{\circ} 23' W$ @ 75 NW cor
Lot 34 @ 238.35 A.P. of street

Now 238.35 - BS N $28^{\circ} 23' E$
and run S $12^{\circ} 44' E$ 105.7

To IM SW cor Lot 34 - From IM To I
Lot 34 is 175 ft on Lake

π still @ 238.35

Turn L $41^{\circ}05'$ To IM

L 4105 - 20.33

9000 = 89.60 π @ 233.35

20.33 BSN on 00 Turn

Left 69.25 $\frac{1}{2}$ and

Cham 70.48 To A/B

Cosine 936.4 / 66.000 of road

936.4	6	65548
2	56184	45200
6548	9364	37456
	5548	77440

7364

77456

125 00

1000

6 53

64

118.93

936

50 95

68.95

563

532

63

137.7

117.5

5874

108.45

5878

263.63

117.50

117.50

8818

5880

235 00

Alice Marie
Blong

1878

5.60

8.80

8.80

8.80

12 01B
5248 / 7105

3 5248
15744 18570
13744

375

6037 28260

6037 27.2 936

12074 93.6 160

503' 160 260 32.4

10 3408 3460
3220

37305

1043.4

4205.3

1671.7

2633.6 over 10

~~6°30~~

~~113203X~~

Cos. 993572

Tang. 113936

1°06

Sine 019197 X 2633.6 = 51015

Cosine 999816 X 2633.6 = 2633.115

Tang. 019201

019197 X 1043.4 = 20.03

999816 X 1043.4 = 1043.11

263312

104311

317623

15717

514793

2633.6

17197

164352

237024

62336

237024

2336

2192

10.2

17197

10433

57591

57591

788

77

282301

282301

210698

237024

237024

237024

2633.1154176

822

40

782

2100

282.45

2382.45

3300

1444

3444.4

26336

997816

158016

26336

210698

237024

237024

237024

2633.1154176

8960

108

8854

1864
1136

Robert Rucker

Robert Rucker

9-30 - 12-30

713.6

2892

430 83

12

282.75

2877

999816

19197

10433

10433

2999448

57591

936

2999448

57391

160

2999264

76788

260

19197

32.2

191816

2002823

246.9

1013.1080328