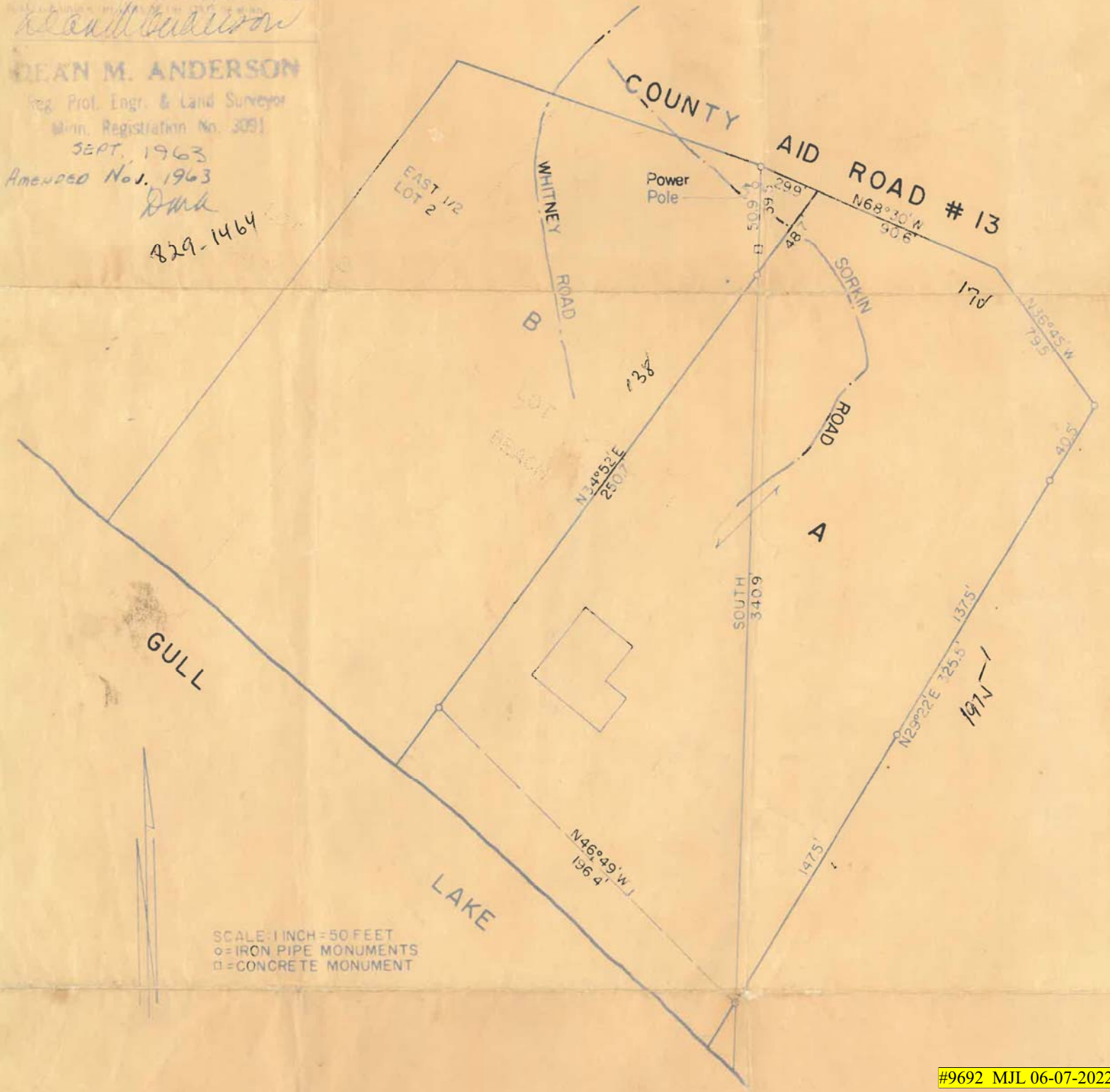


PLAT OF SURVEY

LOT 1 AND EAST 1/2 OF LOT 2 "OZONITE BEACH" AND PART OF GOVERNMENT LOT 6 SECTION 16 - 135 - 29

Dean M. Anderson
DEAN M. ANDERSON
Reg. Prof. Engr. & Land Surveyor
Min. Registration No. 3091
SEPT. 1963
Amended No. 1, 1963
DMA
829-1464



SCALE: 1 INCH = 50 FEET
○ = IRON PIPE MONUMENTS
□ = CONCRETE MONUMENT