

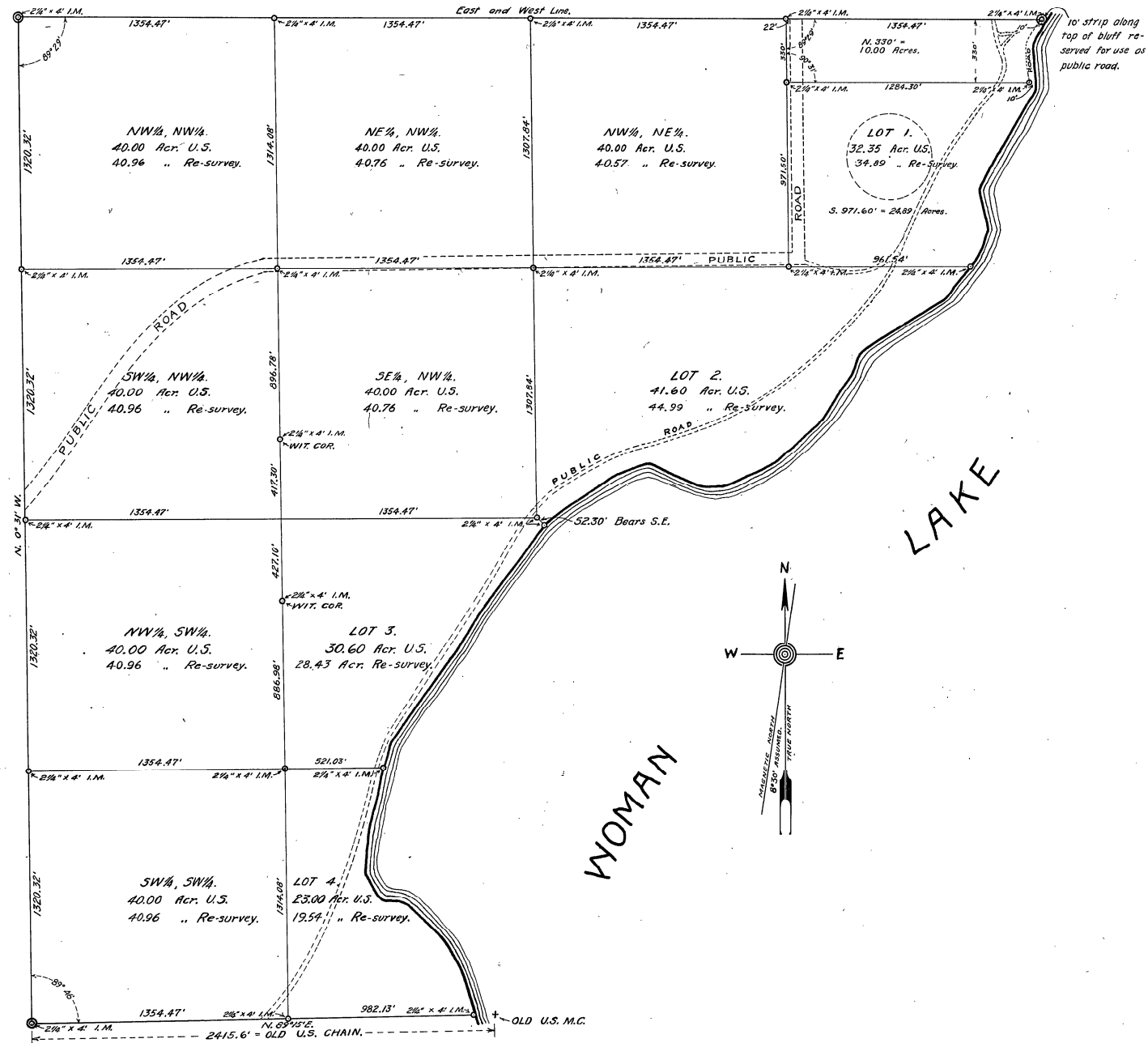
SURVEY OF
SECTION 11 - TWP 140 - RG 29
CASS COUNTY, MINN

SURVEYED BY AND UNDER THE DIRECTION OF J. W. CURO
COUNTY SURVEYOR, IN HIS CONTRACT OF MAY 4, 1915.

CURO'S CONTRACT NO. 10.

SURVEYED MAY 22, 1915 TO JULY 31, 1915.

SCALE 1" = 400'



DESCRIPTION	ACREAGE U.S.	ACREAGE RE-SURVEY	LAND	NAME OF OWNER
LOT 1, N. 330'	32.35	10.00		Harry LaValle.
LOT 1, S. 971.6'		24.89		W. C. Riley.
NW 1/4, NE 1/4	40.00	40.57		"
LOT 2.	41.60	44.99		A. C. Rogers.
NE 1/4, NW 1/4	40.00	40.76		W. C. Riley.
NW 1/4, NW 1/4	40.00	40.96		"
SW 1/4, NW 1/4	40.00	40.96		"
SE 1/4, NW 1/4	40.00	40.76		Weyerhaeuser, et al
LOT 3.	30.60	28.43		A. C. Rogers.
NW 1/4, SW 1/4	40.00	40.96		W. C. Riley.
SW 1/4, SW 1/4	40.00	40.96		Barrett & Zimmerman.
LOT 4.	23.00	19.54		A. C. Rogers.
	407.55	413.78		

Names of Resident Witnesses to all corners in and adjoining this section:
Ernest Tusler; Elmer Horst; John W. Curo; Geo. W. Miller.

Names of Assistants on this survey:

John W. Curo, Engr. in charge.
Geo. W. Miller, Ass't. Engr.
F. A. Donner, Ass't. Engr.
William Berggreen, Chain- and Axman.
Elmer Horst, Chain- and Axman.
Ernest Tusler, Axman.
Geo. Dilworth, Axman.

B23

- ⊙ Corners set from old Govt. Bearing Trees.
- Corners established by this survey.

NOTE: Acreage of Government Lots figured from what we consider the shore line.

CERTIFICATE OF SURVEYOR: I HEREBY CERTIFY THAT THE ABOVE SURVEY IS CORRECT AND ACCURATE AS SHOWN BY THIS PLAT AND THE FIELDNOTES THEREON.

John W. Curo
CO. SURVEYOR.
August 2nd 1915

APPROVED BY THE BOARD OF COMMISSIONERS,
CASS CO., MINN., THIS 3rd DAY OF AUGUST, 1915.

W. J. Jones
CHAIRMAN.

OFFICE OF REGISTER OF DEEDS,
State of Minnesota, County of Cass.

I hereby certify that the within instrument was filed in this office for record on the 31 day of Aug A. D. 1915 at 9 o'clock P. M. and was duly recorded in book _____ of _____

Adrian Knutson
REGISTER OF DEEDS