

461

BALK, EDWARD 8178

T 138 R 30

NW COR SEC 35

(PINE RIVER)

1/2" IRON "Z" BELOW ROAD SURFACE E-E OF ROAD NS AND EAST. FENCE LINE RUNNING WEST.

EXISTING BLAZE IN OAK TREE

FIELDS ARE ALL AROUND SO DISCS ARE IN FENCE, AND TELE PEO, POWER POLE FOR DIST.

TREE HAS DISC IN SIDE OF TREE AND DOUBLE BLAZE

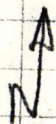
V-17

65° MOSTLY CLEAR

6/15/82

T 138

SEC 35



K. MILLER

S. MOE

B. ZART

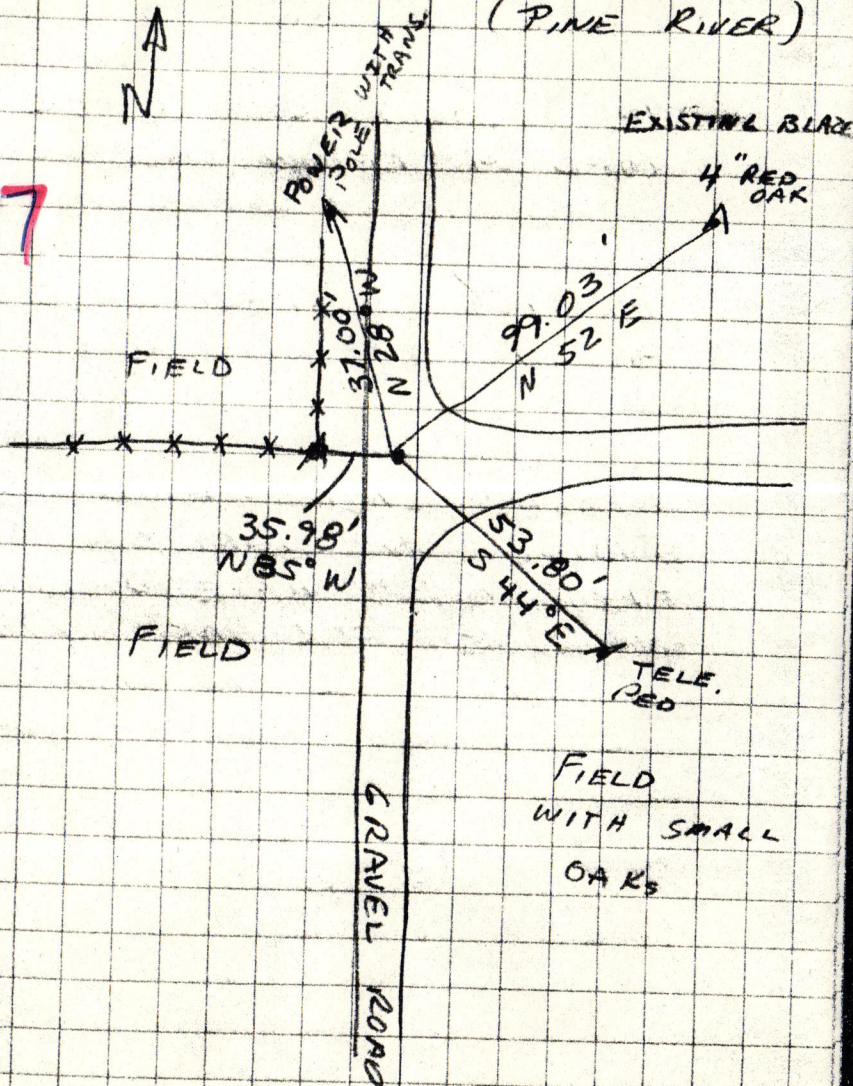
R 30

NW COR

(PINE RIVER)

EXISTING BLAZE

4" RED OAK



3/4/2020, 9135