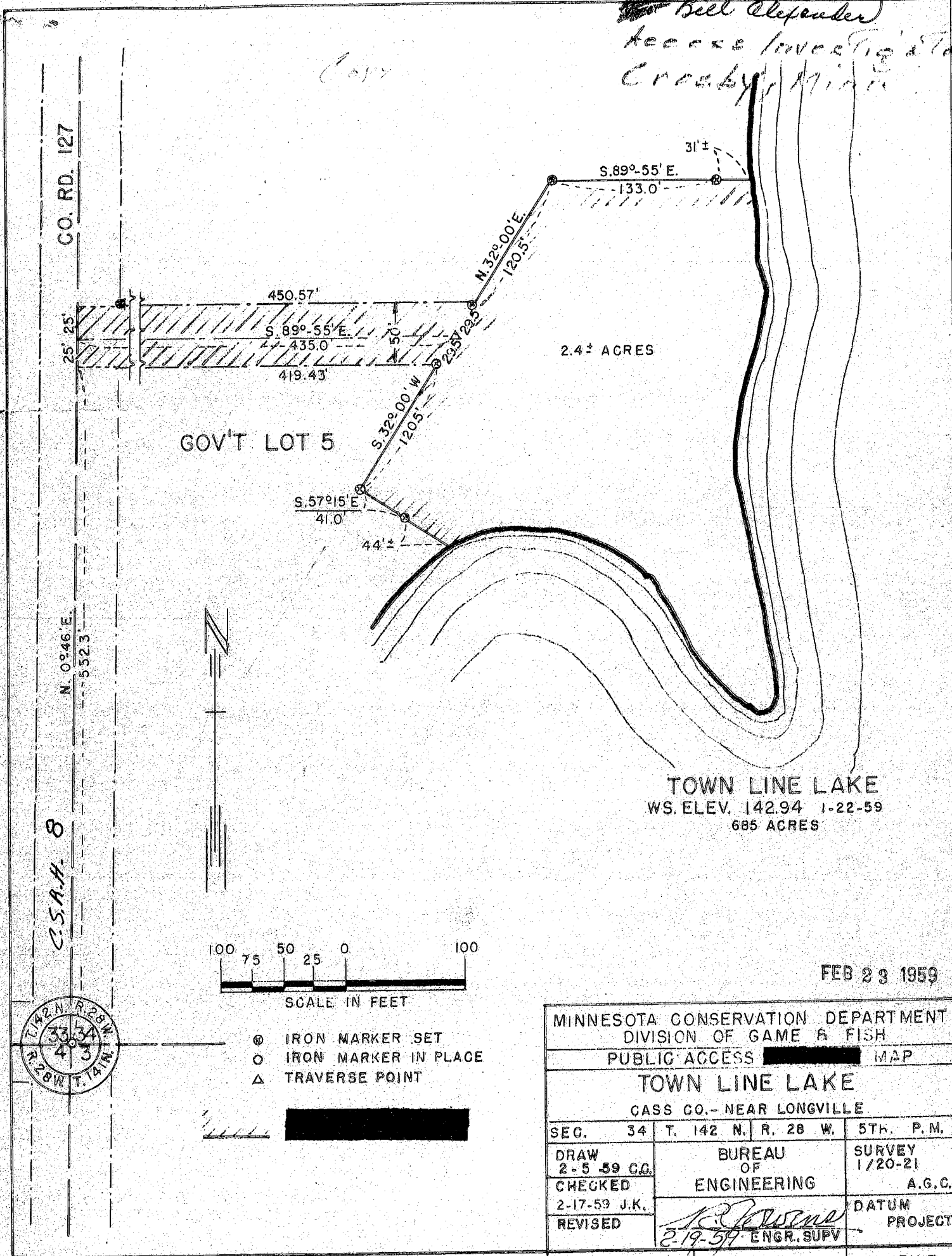


Bill Alexander
Access Investigation
Crookby, Minn.

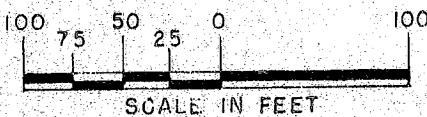
Cass



GOV'T LOT 5

2.4± ACRES

TOWN LINE LAKE
WS. ELEV. 142.94 1-22-59
685 ACRES



- ⊙ IRON MARKER SET
- IRON MARKER IN PLACE
- △ TRAVERSE POINT



FEB 23 1959

MINNESOTA CONSERVATION DEPARTMENT DIVISION OF GAME & FISH			
PUBLIC ACCESS ██████████ MAP			
TOWN LINE LAKE			
CASS CO. - NEAR LONGVILLE			
SEG.	34	T. 142 N. R. 28 W.	5TH. P.M.
DRAW	2-5-59 C.C.	BUREAU OF ENGINEERING	SURVEY 1/20-21 A.G.C.
CHECKED	2-17-59 J.K.	<i>R. Johnson</i> 2-19-59 ENGR. SUPV	DATUM PROJECT
REVISED			

3/4/2020, 9128

REQ. 59-73

32

FILE G-558