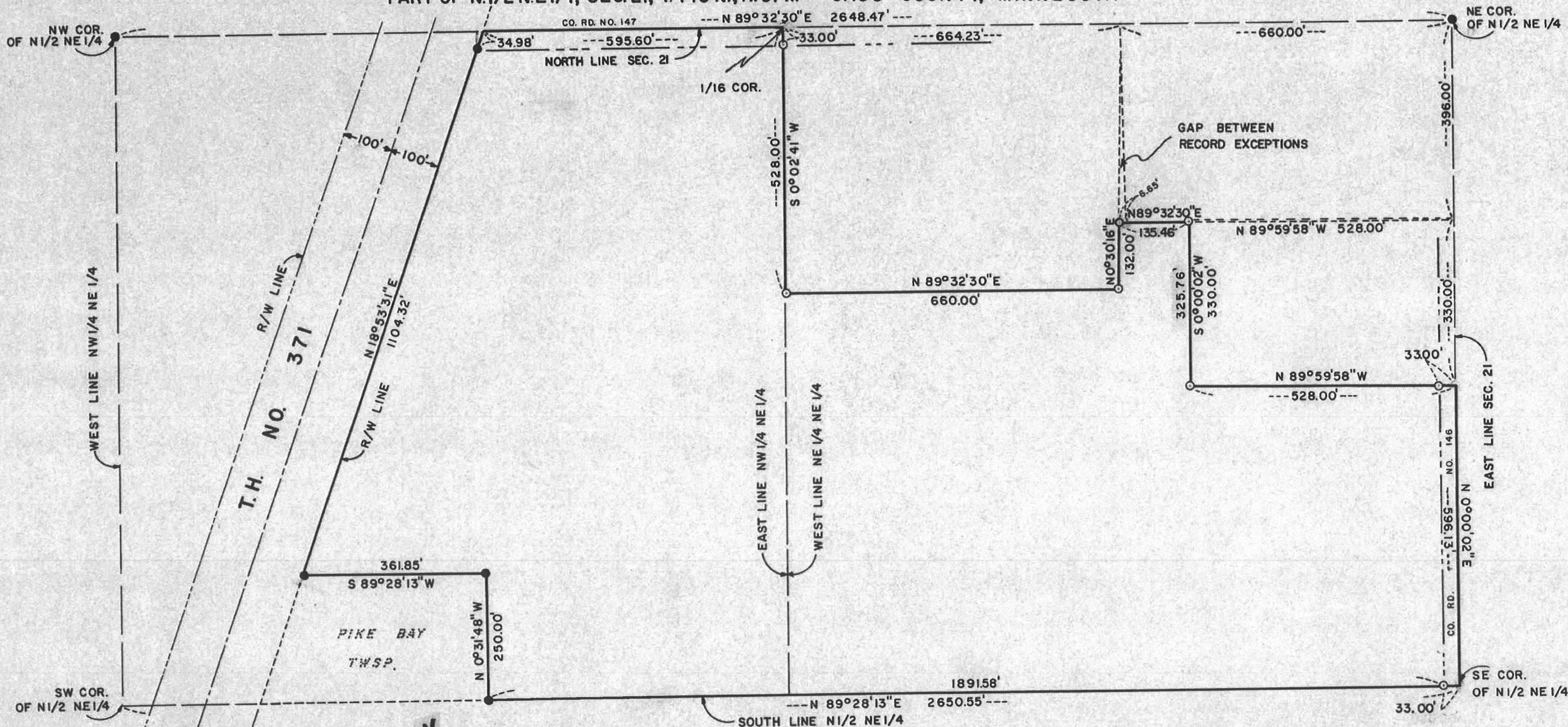


PART OF N.1/2 N.E.1/4, SEC. 21, T. 145 N., R. 31 W. CASS COUNTY, MINNESOTA



TOTAL AREA = 44.89 ACRES ±  
(INCLUDES R/W OF COUNTY ROAD)

SCALE: 1 INCH = 200 FEET  
 ● = IRON PIPE MON. IN PLACE  
 ○ = IRON PIPE MON. SET  
 ORIENTATION OF THIS BEARING SYSTEM IS ASSUMED  
 SURVEY REPRESENTS RECORD DESCRIPTION FILED IN BOOK 114 OF DEEDS ON PAGE 436

I hereby certify that this survey, plan, or report was prepared by me or under my direct supervision and that I am a duly Registered Land Surveyor under the laws of the State of Minnesota.  
*Gay A. Stever*  
 Date Dec. 19, 1996 Reg. No. 12684

ST. REGIS LAND DEVELOPMENTAL CORP.