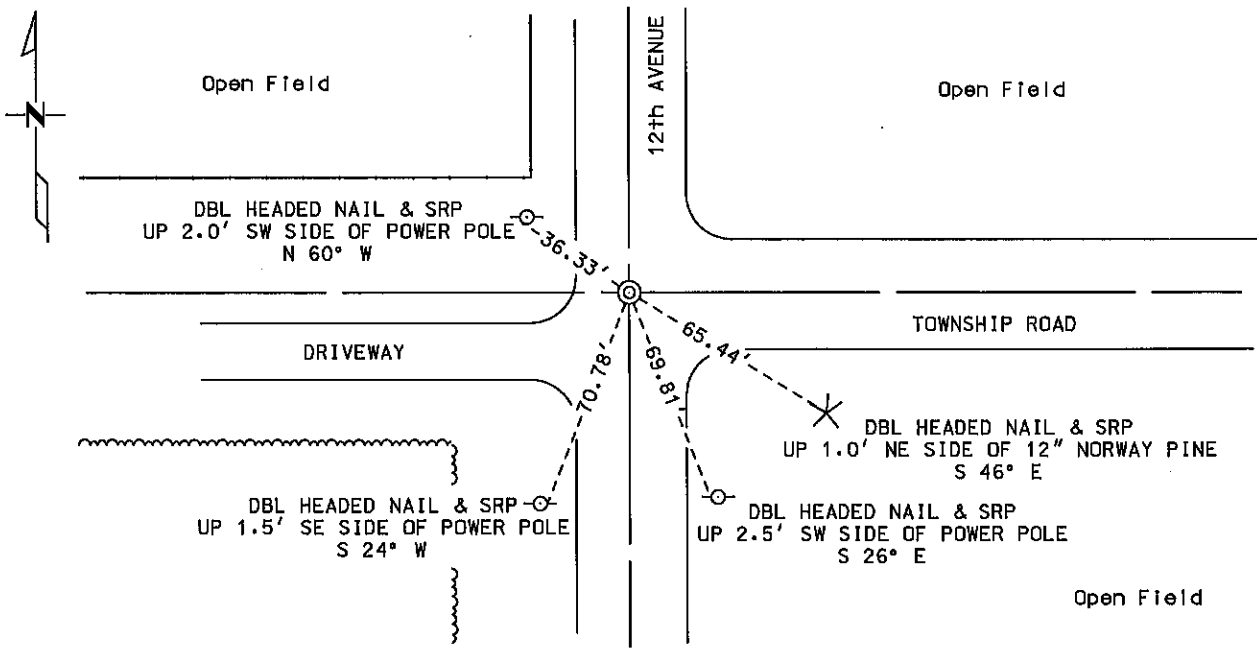


CERTIFICATE OF LOCATION OF GOVERNMENT CORNER

 NORTHEAST Corner of Section 20, Township 137 N, Range 29 W
5 TH Principal Meridian, State of Minnesota, County of CASS

At the corner location shown on the sketch:

- On 1-29-03 found a IRON PIN 0.2' BELOW BIT. SURFACE
DATE 1' +/- WEST OF CL 12 TH AVE., 2' +/- NORTH OF CL TOWNSHIP ROAD
- left monument as found lowered monument removed monument (explain)
- On _____ placed a _____
DATE



Statement of evidence for this corner location is on back of this page.

I hereby certify that this document was researched and prepared by me or under my direct supervision.

Signature _____ Date _____ License No. 40343
Kevin J. Metz MNDOT
 Title: Land Surveyor Professional Engineer County Surveyor County Engineer

Statement of Evidence: Northeast Corner of Section 20, Township 137 North, Range 29 West, 5th Principal Meridian, Cass County, Minnesota.

The original public land survey was run in 1865, and a wood post was used to mark the corner. Two bearing ties were made.

In 1914, Mr. F.A. Donner found a flat iron rod monument previously set by Mr. Curo. He records setting a two-inch by forty-eight inch iron monument in concrete and takes three new bearing ties.

In 1922, Mr. C.J. Bark found a two-inch hollow iron pipe set in concrete. Four two inch by three and one half-foot long hollow iron pipe reference monuments were set.

In 1942, Mr. John Curo found a two-inch iron pipe with the cap missing. Four new bearing ties were recorded.

On 01-29-2003, the Minnesota Department of Transportation found an iron pin and four new bearing ties were taken. The Minnesota Department of Transportation accepts this monument as the correct location for the Corner.

For details and survey analysis, contact the Minnesota Department of Transportation District Surveys Office in Baxter, Minnesota.