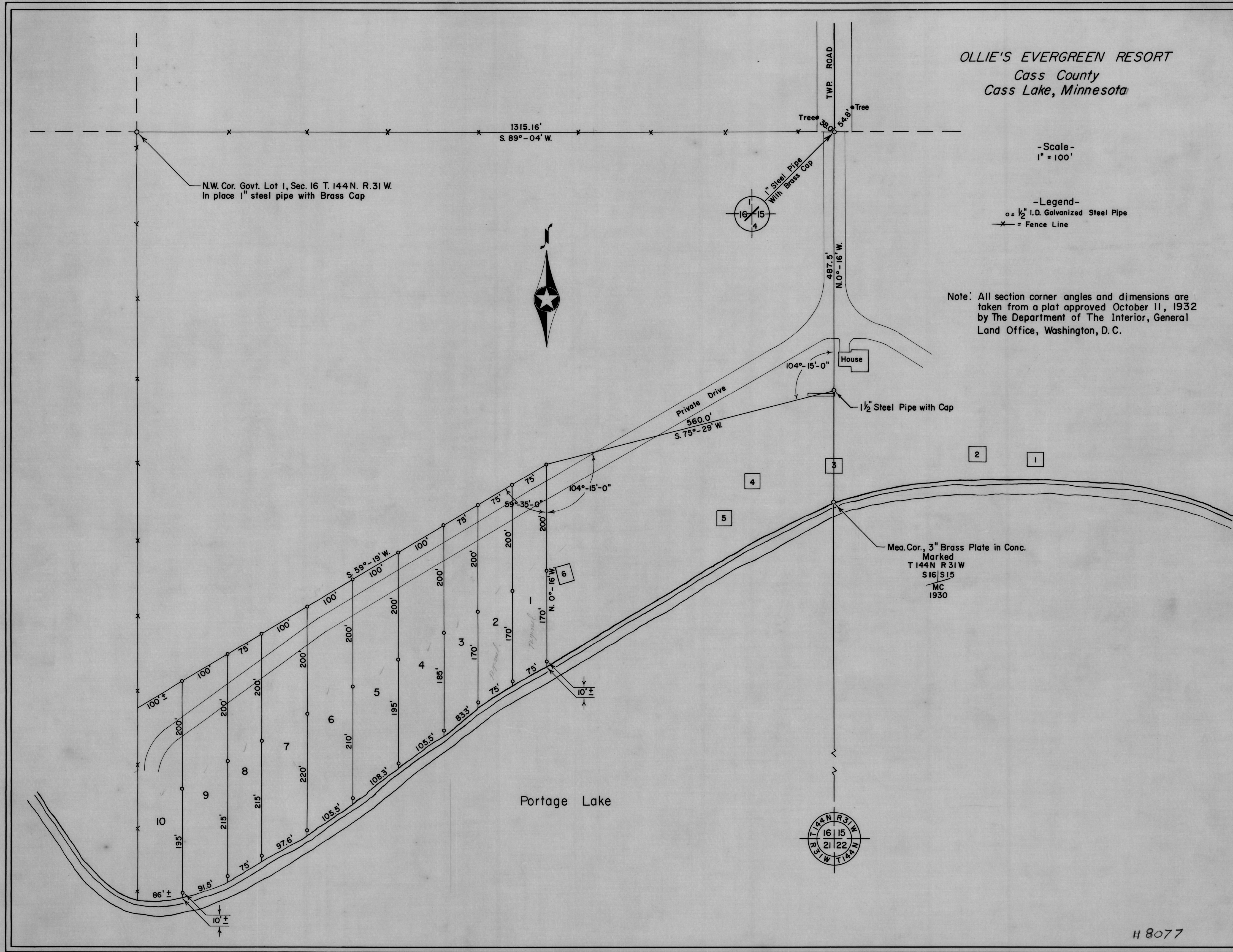


OLLIE'S EVERGREEN RESORT
Cass County
Cass Lake, Minnesota

-Scale-
1" = 100'

-Legend-
○ = 1/2" I.D. Galvanized Steel Pipe
-x- = Fence Line

Note: All section corner angles and dimensions are taken from a plat approved October 11, 1932 by The Department of The Interior, General Land Office, Washington, D. C.



N.W. Cor. Govt. Lot 1, Sec. 16 T. 144 N. R. 31 W.
In place 1" steel pipe with Brass Cap

1315.16'
S. 89°-04' W.

487.5'
N. 0°-16' W.

Private Drive
560.0'
S. 75°-29' W.

Mea. Cor., 3" Brass Plate in Conc.
Marked
T 144 N R 31 W
S 16 S 15
MC
1930

Portage Lake