

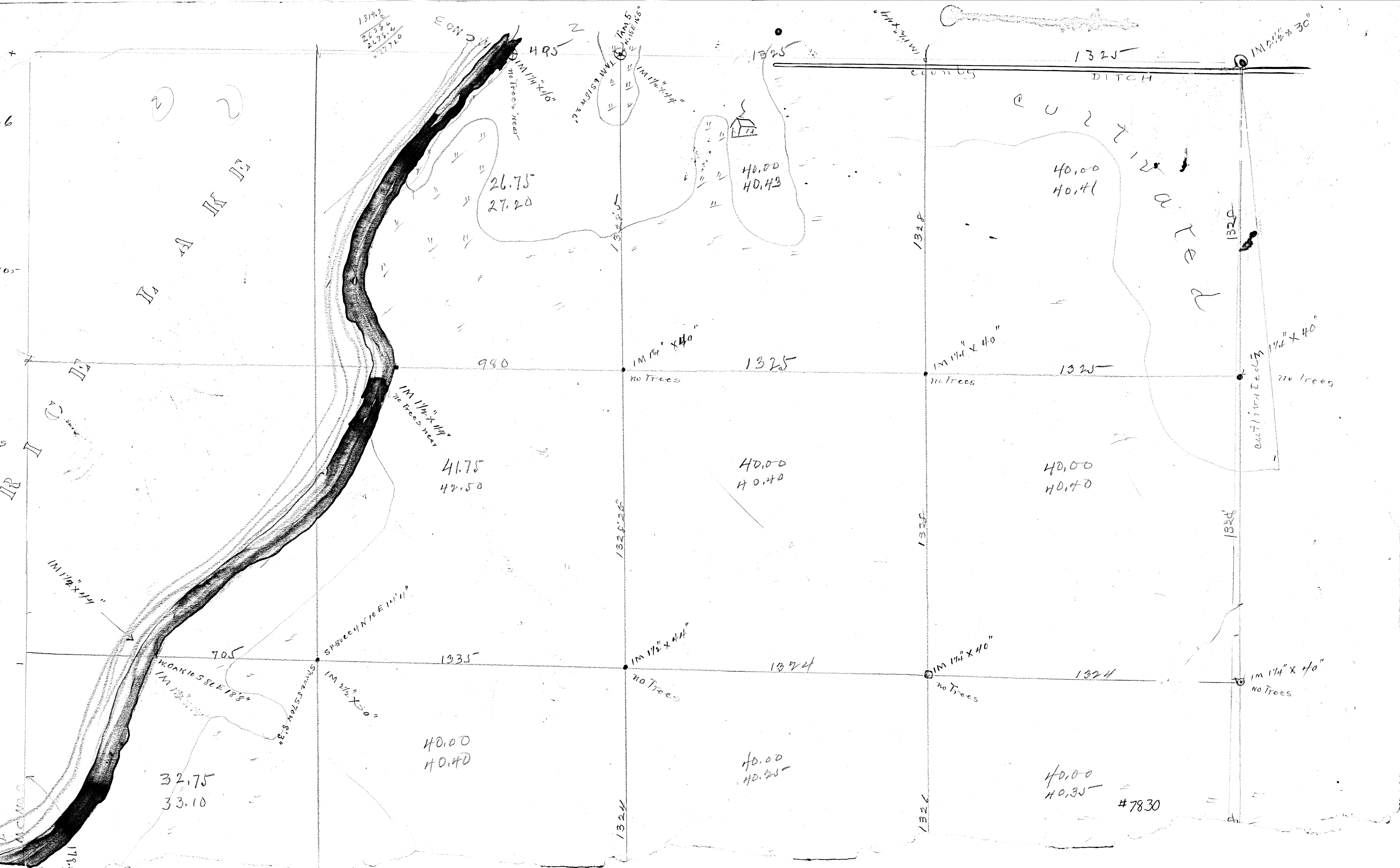
Subdivision of  
Section 36 T. 141 R. 26  
CASS CO. MINN.

546 ACRES  
Cost \$ 480.00  
88¢ per acre

J.H. FLYNN  
County Surveyor

JAN. 1921

J.H. Flynn  
Bert Fosdick  
Frank Rogers  
Witness To All  
Corners  
and Jno. Murchie Jr.  
AFTER JAN 16



#7830