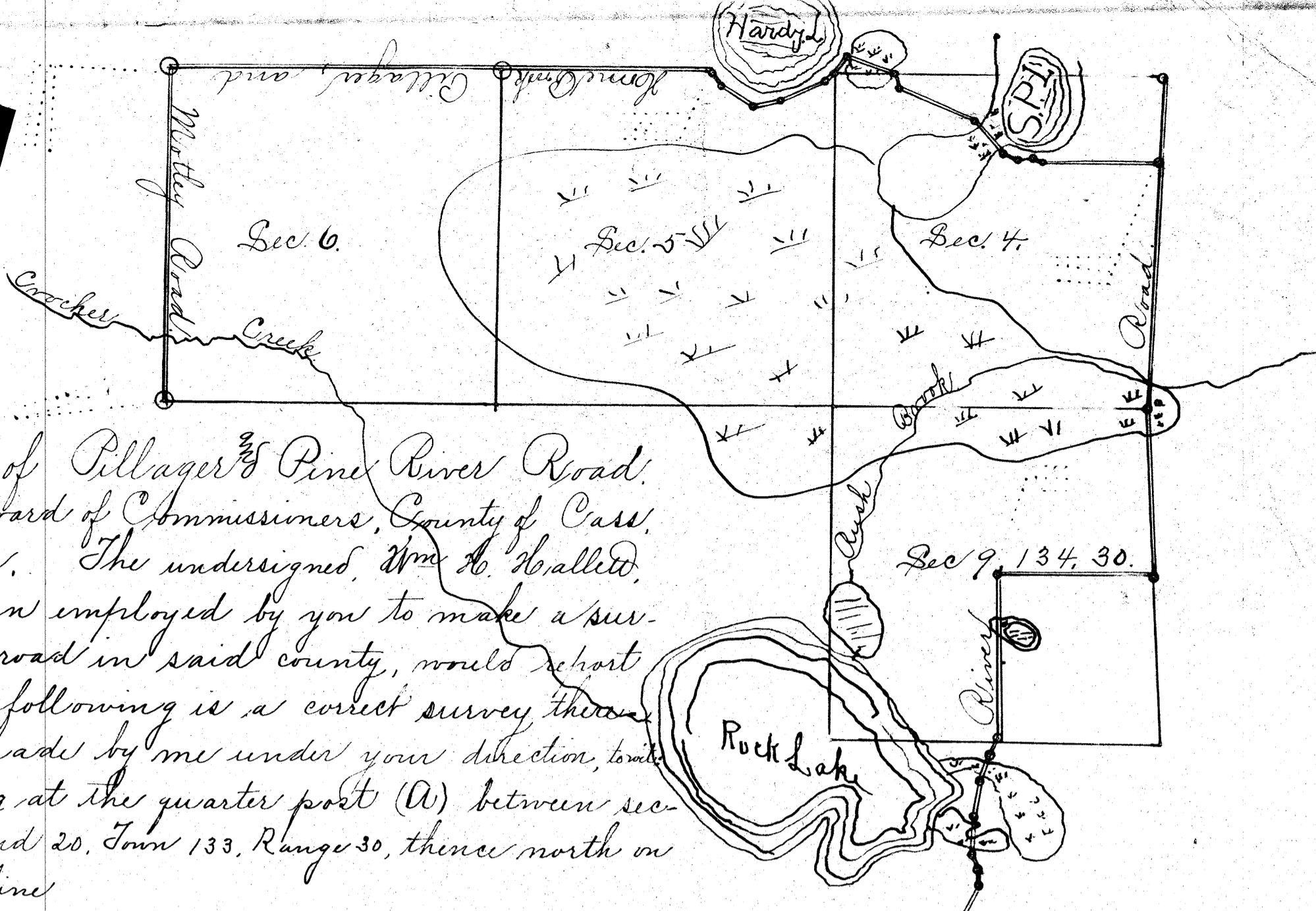


7

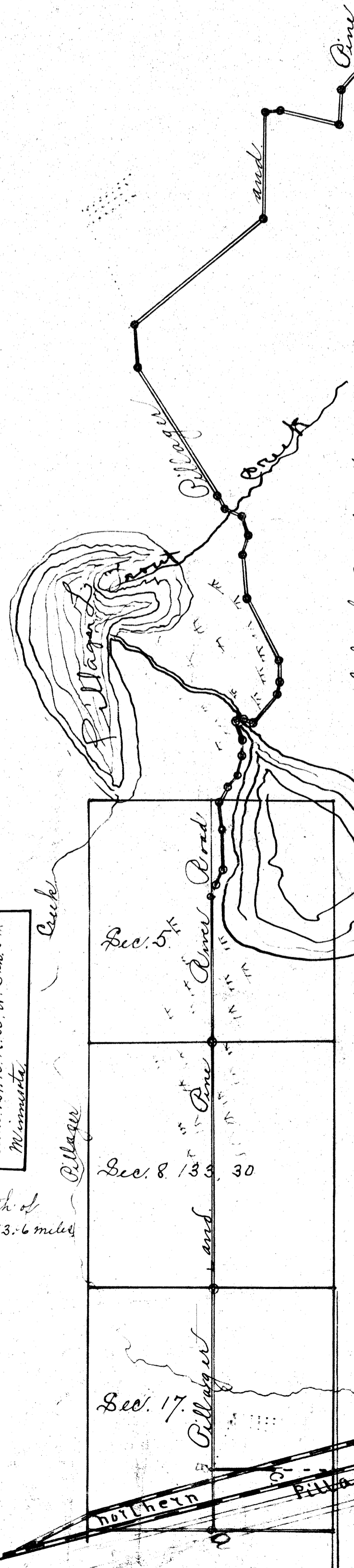


Plat of Pillager & Pine River Road.
 To the Board of Commissioners, County of Cass,
 Minnesota. The undersigned, Wm. H. Skallett,
 having been employed by you to make a sur-
 vey of a road in said county, would report
 that the following is a correct survey thereof,
 as made by me under your direction, to-wit:
 Beginning at the quarter post (A) between sec-
 tions 17 and 20, Twp 133, Range 30, thence north on
 1/4 section line

Sta.	Course	Distance links	Latitude		Departure	
			N. +	S. -	E. +	W. -
A.	North	2000	2000		2000	2000
B.	East	2000		2000		
C.	West	2000		2000		
B	North	1870	1870			
1.	N. 18° 40' E.	500	473		160	
2.	N. 27 1/2° E.	500	443		231	
3.	N. 2 1/2° W.	1400	1398			49
4.	N. 6° W.	800	795			83
5.	N. 30 1/4° E.	550	475		277	
6.	N. 44 1/2° E.	500	356		350	
7.	N. 11 1/2° E.	800	787		159	
8.	N. 5° E.	480	478		42	
9.	N. 21 1/4° W.	710	662			257
10.	N. 79 1/2° E.	300	54		295	
11.	S. 71 3/4° E.	370		15	357	
12.	N. 37 3/4° E.	1260	969		805	
13.	N. 5° E.	400	399		34	
14.	N. 3 1/2° W.	650	649			36
15.	N. 26 1/4° W.	2300	2063			1018
16.	N. 5 1/4° W.	1400	1394			128
17.	N. 18 1/4° E.	700	665		219	
18.	N. 16 1/2° W.	700	671		199	
19.	N. 7 1/2° W.	600	180		572	
20.	N. 23 1/2° W.	590	541		235	
21.	N. 30 1/2° W.	5000	4308		2638	
22.	N. 2° W.	1400	1399			49
23.	N. 50 1/2° E.	5500	4144		3498	
24.	N. 0° 30' W.	3500	3500			31
25.	N. 85° E.	600	52		597	
26.	S. 76 3/4° E.	2050		469	1996	
	N. 2° E.	1100	1098		38	
	N. 52 1/2° E.	1450	888		1147	
29.	N. 1 1/2° E.	900	899		24	
30.	N. 18 1/2° W.	300	285			95
31.	N. 10° W.	800	788			139
32.	N. 25° E.	1500	359		634	
33.	N. 1/2° W.	400	400			3
34.	N. 24° W.	250	228			101
35.	N. 3 1/2° E.	900	898		55	
36.	N. 9 1/2° E.	950	937		157	
37.	N. 17° E.	700	669		205	
38.	N. 20 1/2° E.	356	333		125	
1/4 center of sec. 9.		4010	4010			
1/4 sec. 9 to 10		3882			3882	
1/4 sec. line		14285	14285			
1/4 on sec. line		4285	4285			
1.	West	2950			2950	
2.	N. 69° W.	200		72	186	
3.	S. 85° W.	400		34	398	
4.	N. 72° W.	400		126	380	
5.	N. 43° W.	1000	766		643	
6.	N. 66 3/4° W.	1950	770		1792	
7.	N. 8° W.	350	346		49	
8.	N. 58° W.	350	185		297	
9.	N. 72° W.	850	226		808	
10.	S. 38° W.	888		308	262	
11.	S. 66° W.	1136		453	1041	
12.	S. 73 1/2° W.	700		198	671	
13.	N. 56 1/2° W.	850	469		708	
14.	N. 34 1/2° W.	450	360		633	
15.	West	5100			5100	
16.	West	8000			8000	
17.	South	8000	8000			
Terminated		66,223	14,388	17,281	31,350	

Starting at the quarter post between Sec. 9 and 16 Twp. 134 N. R. 30, W. 5th P.M. Minnesota

Length of road 13.6 miles



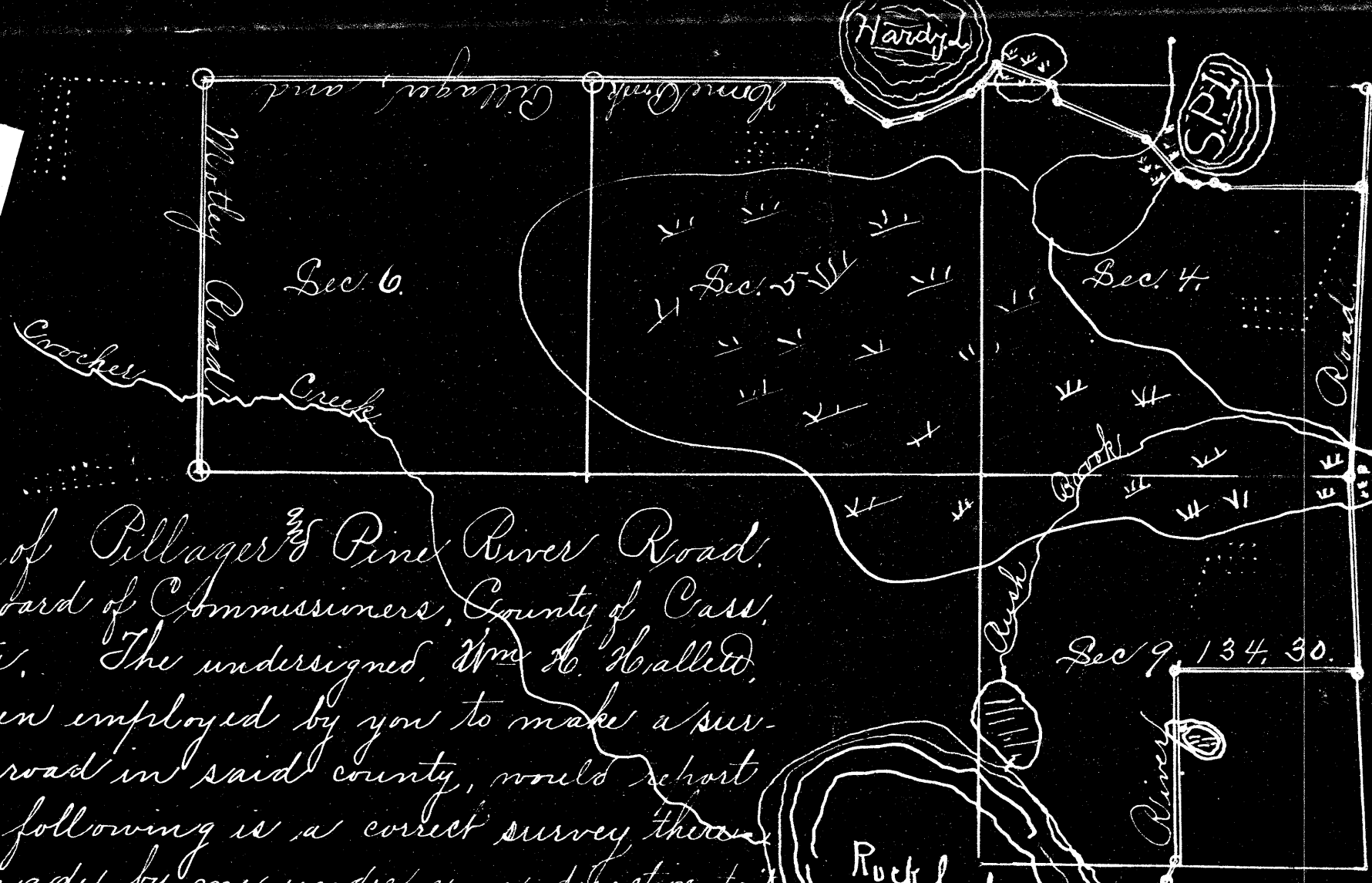
I hereby certify that the above is a correct copy of the survey of Pillager and Pine River Road and of Illadged, Home Brook and Molley Road which was made and completed April 8th, 1905. by direction of W. B. Jones, committee appointed by the Board for that purpose and plotted on a scale of chain to one inch Dated at Home Brook this 8th day of April, 1905.

Wm. H. Skallett
 Surveyor

Subscribed and sworn to
 this 8th day of April 1905.
 W. C. Tuttle
 Town Clerk

- Names of those who assisted in this survey:
- W. B. Jones
 - Bunker Rodgers
 - Home Jones
 - W. A. Fox
 - Chris Sorenson
 - Wayne Hoove
 - Alba Randall
 - P. B. Peterson
 - Jas Vincent
 - Larry Vincent
 - Emil Cole
 - W. A. Carty
 - Norman Collins
 - Jas. Marmin
 - O. John C. Stonell

7



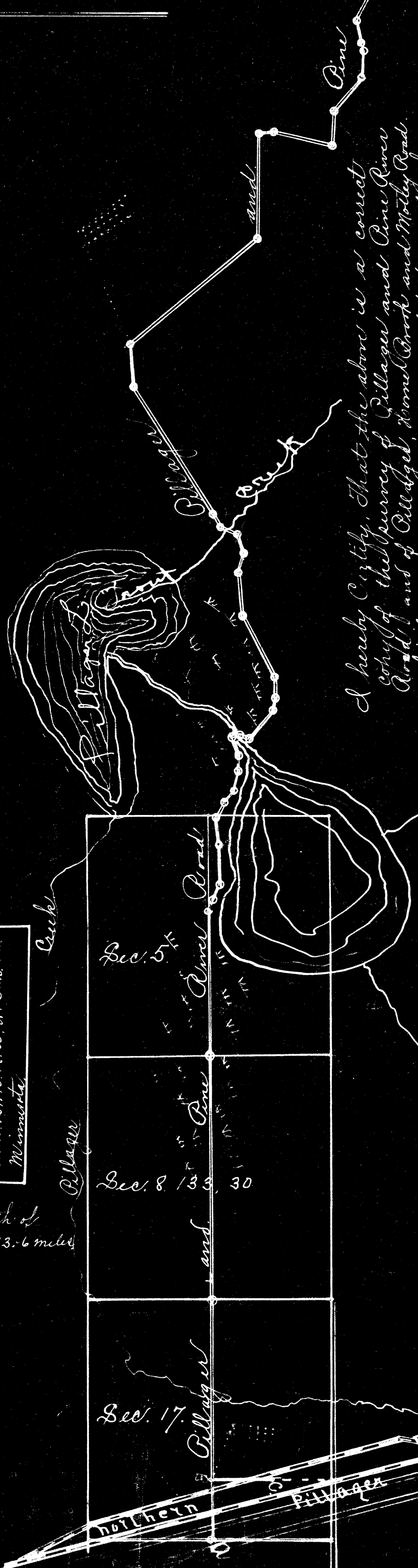
Plat of Pillager's Pine River Road.
 To the Board of Commissioners, County of Cass,
 Minnesota. The undersigned, Wm. H. Hallitt,
 having been employed by you to make a sur-
 vey of a road in said county, would report
 that the following is a correct survey thereof,
 as made by me under your direction, to-wit:

Beginning at the quarter post (A) between sec-
 tions 17 and 20, Town 133, Range 30, thence north on
 1/4 section line

Sta.	Course	Distance links	Latitude		Departure	
			N +	S -	E +	W -
A	North	2000	2000		2000	2000
B	East	2000		2000		
C	West	2000		2000		
B	North	1870	1870			
1.	N. 18° 46' E	500	473		160	
2.	N. 57 1/2° E	500	443		231	
3.	N. 21° W	1400	1398			49
4.	N. 6° W	800	795			83
5.	N. 30 1/4° E	550	475		277	
6.	N. 44 1/2° E	500	356		350	
7.	N. 11 1/2° E	800	784		159	
8.	N. 5° E	480	478		42	
9.	N. 21 1/4° W	710	642			257
10.	N. 74 1/2° E	300	54		295	
11.	S. 71 3/4° E	370		15	357	
12.	N. 39 3/4° E	1260	969		805	
13.	N. 5° E	400	399		34	
14.	N. 3 1/2° W	650	649			36
15.	N. 26 1/2° W	2300	2063			1018
16.	N. 5 1/2° W	1400	1394			128
17.	N. 18 1/2° E	700	665		219	
18.	N. 16 1/2° W	700	671		199	
19.	N. 72 1/2° W	600	180		572	
20.	N. 23 1/2° W	590	541		235	
21.	N. 30 1/2° W	5000	4308		2638	
22.	N. 2° W	1400	1399			49
23.	N. 50 1/2° E	5500	4144		3498	
24.	N. 0° 30' W	3500	3500			31
25.	N. 85° E	600	52		597	
26.	S. 76 3/4° E	2050		469	1996	
	N. 2° E	1100	1098		38	
	N. 52 1/2° E	1450	888		1147	
29.	N. 1 1/2° E	900	899		24	
30.	N. 18 1/2° W	300	285			95
31.	N. 10° W	800	788			139
32.	N. 25° E	1500	1359		634	
33.	N. 1/2° W	400	400			3
34.	N. 24° W	250	228			101
35.	N. 3 1/2° E	900	898		55	
36.	N. 9 1/2° E	950	937		157	
37.	N. 17° E	700	669		205	
38.	N. 20 1/2° E	356	333		125	
To center of sec. 9		4010	4010			
E to 1/4 sec. 9 & 10		3882			3882	
1/4 sec. line		14285	14285			
1/4 sec. line		4285	4285			
1.	West	2950			2950	
2.	N. 69° W	200	72		186	
3.	S. 85° W	400		34	398	
4.	N. 70° W	400		126	380	
5.	N. 40° W	1000	766		643	
6.	N. 66 1/2° W	1950	770		1792	
7.	N. 8° W	350	346		49	
8.	N. 08° W	350	185		297	
9.	N. 72° W	800	226		808	
10.	S. 38° W	888		808	262	
11.	S. 66° W	1136		453	1041	
12.	S. 73 1/2° W	700		198	671	
13.	N. 50 1/2° W	850	469		708	
14.	N. 34 1/2° W	450	360		503	
15.	West	5700			5700	
16.	West	8000			8000	
17.	South	8000		8000		
Terminated		66,923	14,388	17,281	31,350	

Starting at the quarter post between Sec. 9 and 16 Town 134, R. 30, W. 5th P.M. Minnesota

Length of road 13.6 miles



A hereby certify that the above is a correct copy of the survey of Pillager and Pine River Road, and of Pillager, Horned Brook and Moley Road, which was made and completed April 8th, 1905, by direction of W. B. Jones, committee appointed by the Board for that purpose and plotted at a scale of 30 chains to one inch. Dated at Horn Brook this 8th day of April, 1905.

Wm. H. Hallitt
 Surveyor

- Names of those who assisted in this survey:
- W. B. Jones
 - Sumner Rodgers
 - John
 - Joe
 - Chris Larson
 - Wayne Howe
 - Alva Randal
 - P. B. Peterson
 - Jas Vincent
 - Emil C. G.
 - Wm. Canty
 - Norman Collins
 - Jas. Marmen
 - John C. Stonell

Subscribed and sworn to this 8th day of April, 1905
 W. H. Little
 Town Clerk