

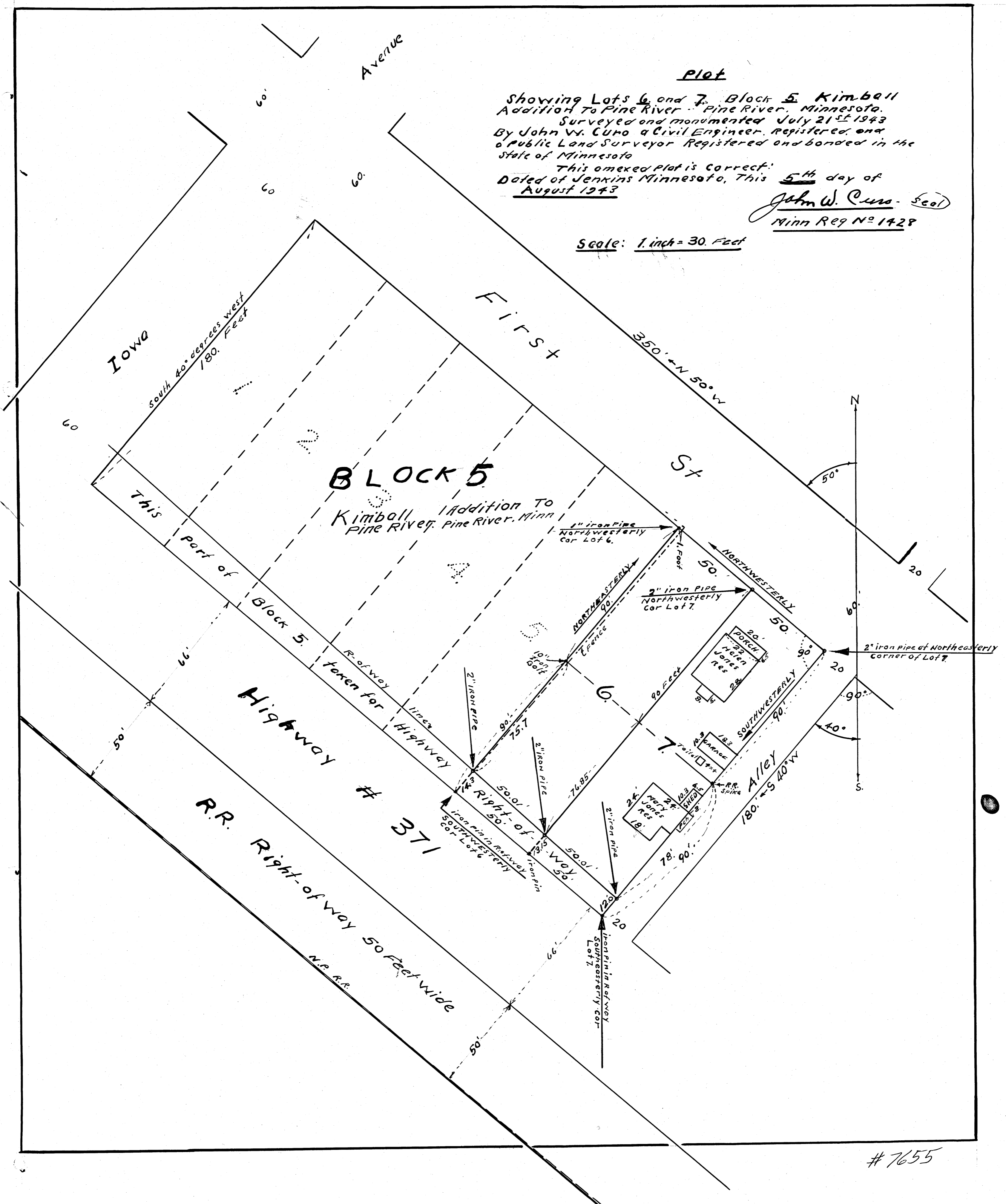
Plot

Showing Lots 6 and 7, Block 5, Kimball Addition to Pine River, Pine River, Minnesota. Surveyed and monumented July 21st 1943 By John W. Curo, a Civil Engineer, Registered and a Public Land Surveyor Registered and bonded in the State of Minnesota

This annexed Plat is correct: Dated at Jenkins Minnesota, This 5th day of August 1943

John W. Curo - Seal
Minn Reg No 1428

Scale: 1 inch = 30 Feet



7655