

CERTIFICATE OF SURVEY

FOR: MINNESOTA POWER
 P.O. NO. 5311013432
 PART OF SECTION 8 TOWNSHIP 138 NORTH,
 RANGE 31 WEST OF THE 5TH PRINCIPAL MERIDIAN,
 CASS COUNTY, MINNESOTA

EASEMENT LEGAL DESCRIPTION

A 120.00 foot easement for utility purposes over, under and across The Northwest Quarter of the Northeast Quarter, Section 8, Township 138 North, Range 31 West of the Fifth Principal Meridian, Cass County, Minnesota, with a centerline described as follows:

Commencing at the North Quarter corner of said Section 8; thence South 0 degrees 46 minutes 36 seconds West along the west line of the Northeast Quarter of said Section 8, a distance of 405.23 feet to the point of beginning of the centerline to be described; thence South 58 degrees 45 minutes 25 seconds East, a distance of 336.32 feet; thence South 58 degrees 48 minutes 19 seconds East, a distance of 838.79 feet; thence South 58 degrees 49 minutes 25 seconds East, a distance of 370.05 feet to the east line of said Northwest Quarter of the Northeast Quarter and said easement centerline there terminates.

The sidelines of said easement are to be prolonged or shortened to terminate on the west line, on the south line, and on the east line of said Northwest Quarter of the Northeast Quarter.

SURVEYOR'S CERTIFICATE

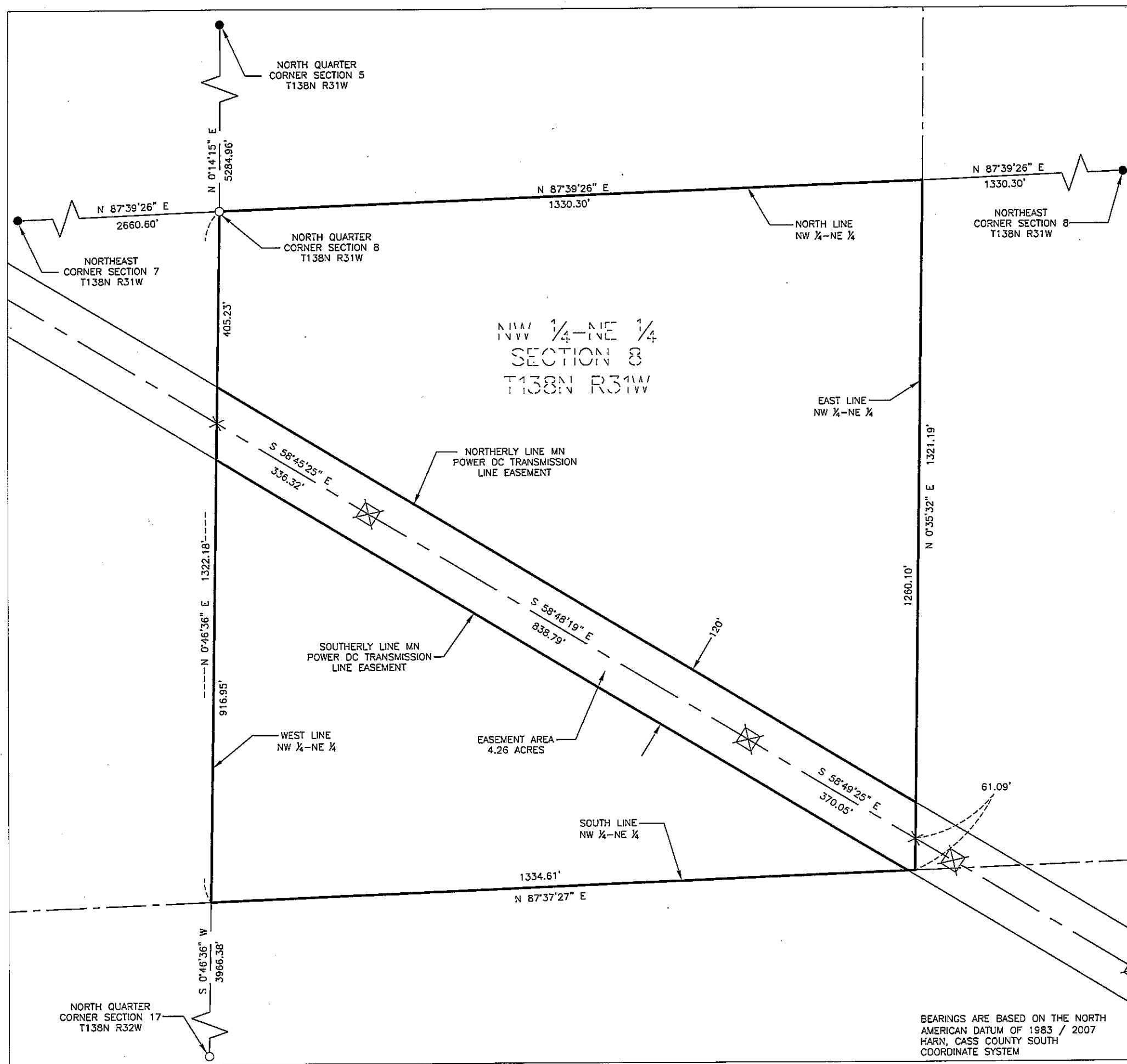
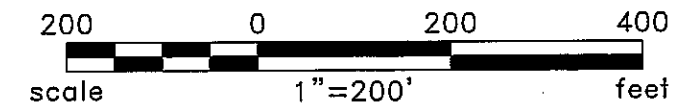
I HEREBY CERTIFY THAT THIS SURVEY, PLAN OR REPORT WAS PREPARED BY ME OR UNDER MY DIRECT SUPERVISION AND THAT I AM A DULY LICENSED LAND SURVEYOR UNDER THE LAWS OF THE STATE OF MINNESOTA.

Garrett M. Leas
 GARRETT M. LEAS, MINNESOTA LICENSE NO. 42619

12-13-12
 DATE

LEGEND

- ☒ = DC Transmission Line Structure
- = Found Monument
- = Set Monument, PLS 42619
- = Minnesota Power Right-Of-Way
- - - = Transmission Center Line
- = Section Line
- - - = Quarter Section Line
- - - = Sixteenth Section Line
- = Property Line

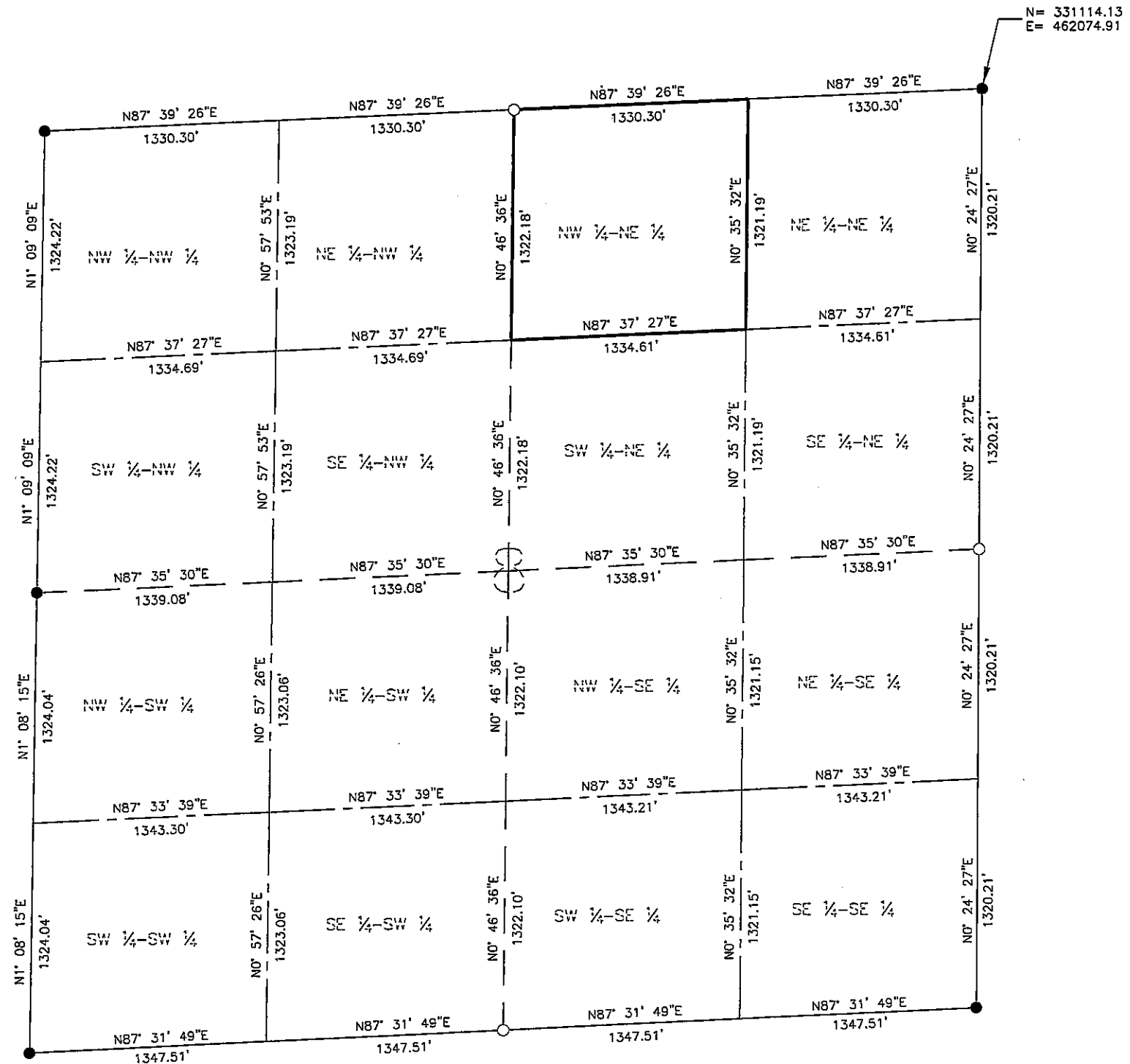


BEARINGS ARE BASED ON THE NORTH AMERICAN DATUM OF 1983 / 2007 HARN, CASS COUNTY SOUTH COORDINATE SYSTEM

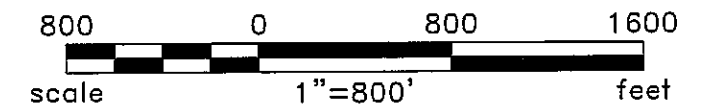
Rev'd.		Cass County, MN		SHEET NO.	
		MINNESOTA POWER		1 of 2	
		Duluth, MN			
		NW1/4 - NE1/4			
		SECTION 8			
		T138N R31W			
		PROJECT PARCEL NO. 7			
DRWN. BY	CHK'D BY	PROJECT NO.	LAST REVISED		
CAM	JML	51612100	11/27/2012		
(Layout 1)					
Plotted-11/27/2012-4:45pm					
© KLJ 2012					

CERTIFICATE OF SURVEY


SECTION 8 TOWNSHIP 138 NORTH,
RANGE 31 WEST OF THE 5TH PRINCIPAL MERIDIAN,
CASS COUNTY, MINNESOTA



- LEGEND**
- = Found Monument
 - = Set Monument, PLS 42619
 - = Section Line
 - - - = Quarter Section Line
 - - - - = Sixteenth Section Line



BEARINGS ARE BASED ON THE NORTH
AMERICAN DATUM OF 1983 / 2007
HARN, CASS COUNTY SOUTH
COORDINATE SYSTEM

Rev'd.		Cass County, MN MINNESOTA POWER Duluth, MN		SHEET NO. 2 of 2
		SECTION 8 T138N R31W PROJECT PARCEL NO. 7		
		DRWN. BY CAM	CHK'D BY JML	PROJECT NO. 51612100
Plotted-11/27/2012-4:25pm				(Layout1) © KLJ 2012