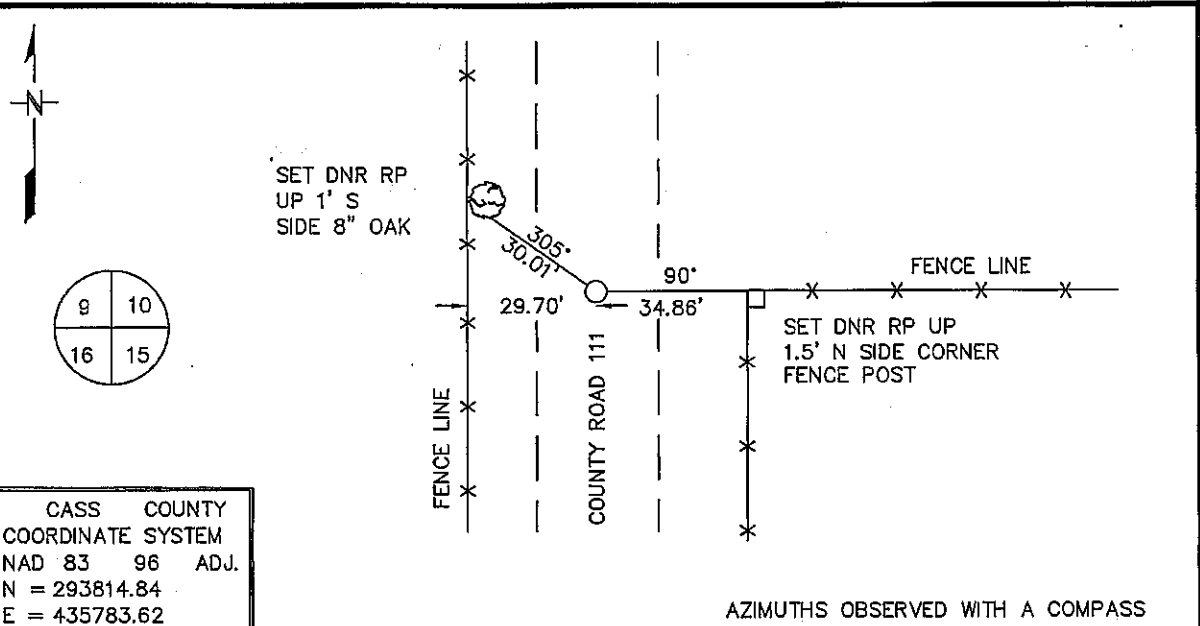


CERTIFICATE OF LOCATION OF GOVERNMENT CORNER

NORTHEAST Corner of Section 16, Township 137 N, Range 32 W
5TH Principal Meridian, State of Minnesota, County of CASS

At the corner location shown on the sketch:

- On _____ found a _____
DATE
- left monument as found, lowered monument, removed monument (explain)
- On 7/27/04 Placed a 3/4" IRON ROD WITH SURVEY CAP AT INTERSECTION
DATE
OF CENTERLINE ROAD AND FENCE EAST



CASS COUNTY
 COORDINATE SYSTEM
 NAD 83 96 ADJ.
 N = 293814.84
 E = 435783.62

AZIMUTHS OBSERVED WITH A COMPASS

Statement of evidence for this corner location is on back of this page. JANUARY 2005
SFT00019

I certify that this document was researched and prepared by me or under my direct supervision.

SIGNATURE _____ DATE _____ License Number 16098

Title: Land Surveyor Professional Engineer County Surveyor County Engineer

Northeast Corner Section 16, Township 137 North, Range 32 West

The Department of Natural Resources, Division of Lands and Minerals, contacted the following offices for information regarding this corner:

MN Secretary of State
 MN Department of Transportation
 Cass County Highway Department
 Cass County Surveyor
 Cass County Auditor
 Cass County Recorder

1870 The US General Land Office field notes, on file in the Secretary of State's Office, show this corner to be marked with a post and the following bearing trees were marked:

W. Birch	12"	S59°E	40 links
Aspen	10"	N32°E	62 links
Aspen	8"	N18 ½°W	41 links
W. Birch	9"	S60 ½° W	39 links

1913 John Curo, Cass County Surveyor, in a resurvey of many sections in this township, found the stump of the northeast GLO bearing tree from which he set a 2 ½" x 48" galvanized iron pipe capped on top and set its full length into the ground at which point he pulled the old section corner stake. Iron pipe is in the center of road.

1916 E.B. Horst, Cass County Surveyor Office, in a resurvey of Ansel Township, found the iron pipe set by Curo.

2003 In March, the DNR survey crew searched for evidence of the corner and found nothing. They located the intersection of centerline north-south road at fence east and set a spike.

2004 In July, the DNR returned to the corner and accepted the spike as marking the obliterated position of the corner. The spike was replaced with a survey marker.

For more information on our survey in this area, please contact MN DNR, Division of Lands and Minerals, Survey Section, 1601 Minnesota Drive, Brainerd, MN 56401