

WASHBURN LAKE

N 89° 21' E
1321.9'

10" W. Pine NW. 43.9'
9" Maple NE. 75'
Power Pole SW. 25.1'



NW 1/4 - NW 1/4

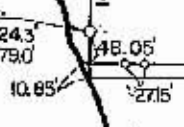
S 00° 13' E
1298.15'

1302.5'

N 89° 32' 30" E
1301.38'

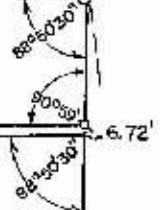
8" Balsam SE 26.7'
8" Balsam SW 23.6'
10" Balsam NW 36.1'

Point on Line.
24" Norway N75°E 24.3'
18" Norway S45°E 79.0'



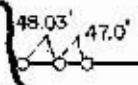
304.2'

North line of the South 1109' 926.46'
South line of the North 200'



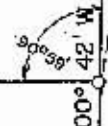
GOVT. LOT 8

WASHBURN LAKE



1159.4'
N 89° 43' E

12" Balsam SE 23.2'
10" Balsam SE 25.1'
7" Tom. NW 21.1'



S 00° 42' W

GOVT. LOT 7

1804.6'

238.8'

PLAT OF SURVEY

SEC. 9, T 139 N, R 26 W, CASS COUNTY



SCALE: 1 INCH = 200 FEET
O = IRON MONUMENT

I HEREBY CERTIFY THAT THIS SURVEY, PLAN OR REPORT WAS PREPARED BY ME OR UNDER MY DIRECT SUPERVISION AND THAT I AM A DULY REGISTERED PROFESSIONAL ENGINEER AND LAND SURVEYOR UNDER THE LAWS OF THE STATE OF MINN.

Dean M. Anderson
DATE: 15 Jan 1967 REG. NO. 3091

DEAN M. ANDERSON
Reg. Prof. Engr. & Land Surveyor
Minn. Registration No. 3091

WASHBURN LAKE