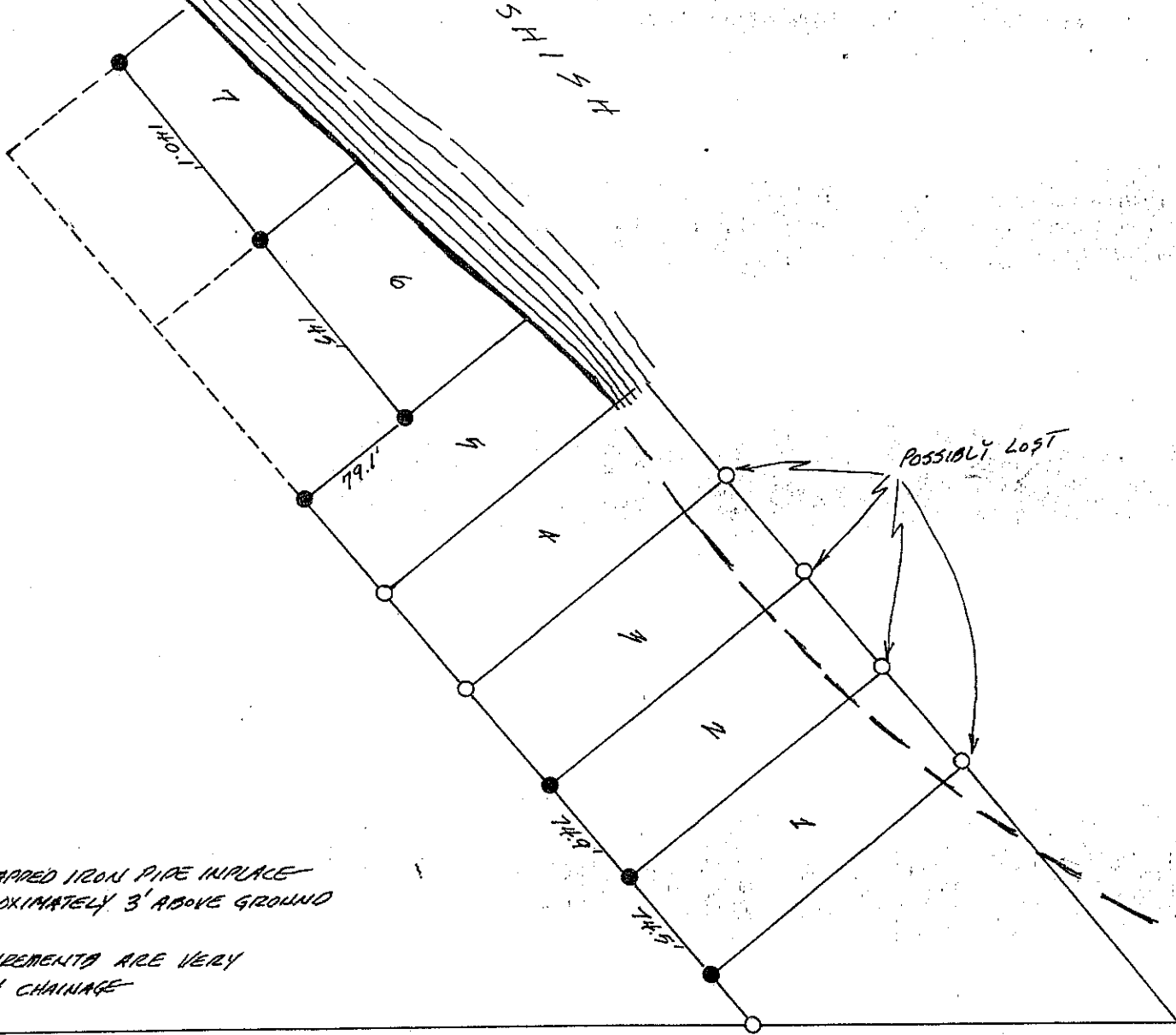


RECEIVED
GL 2 18/145/28
CASS COUNTY SURVEYOR

Lake Winnibigoshish



● 2" CAPPED IRON PIPE IN PLACE
APPROXIMATELY 3' ABOVE GROUND
MEASUREMENTS ARE VERY
ROUGH CHAINAGE

GERALD CARLSON
12-15-1978

MN/SNR

FO-849