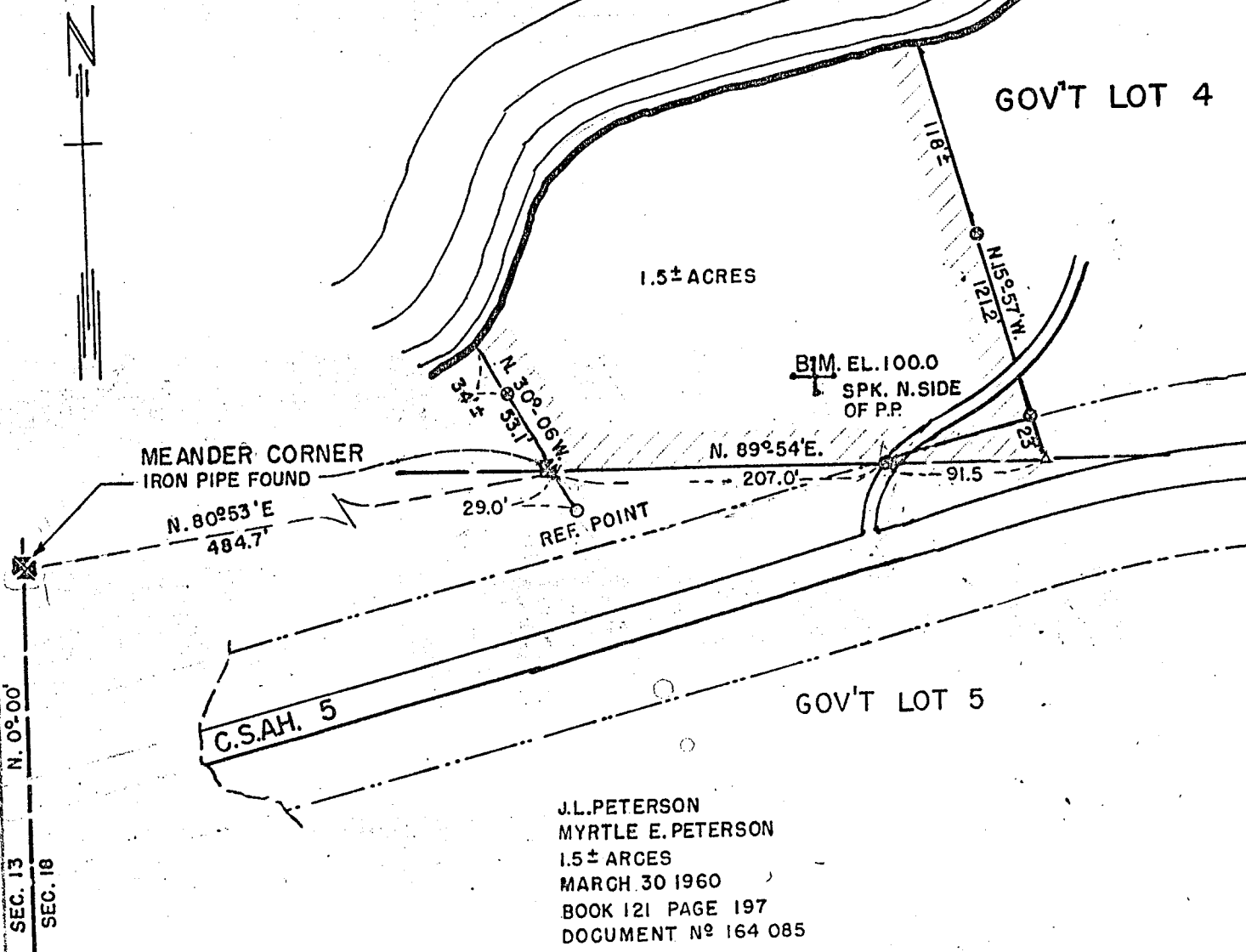
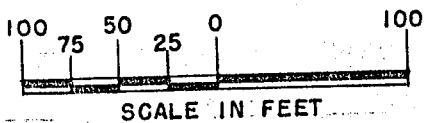


WEBB LAKE
 WS. EL. 88.6 8-27-59
 724 ACRES



J.L. PETERSON
 MYRTLE E. PETERSON
 1.5± ACRES
 MARCH 30 1960
 BOOK 121 PAGE 197
 DOCUMENT NO 164 085



- ⊙ IRON MARKER SET
- IRON MARKER IN PLACE
- △ TRAVERSE POINT

PROPERTY OF
 STATE OF MINNESOTA

MINNESOTA CONSERVATION DEPARTMENT
 DIVISION OF GAME & FISH
 PUBLIC ACCESS PROPERTY MAP

WEBB LAKE

CASS CO. - NEAR HACKENSACK

SEC. 18	T. 140 N. R. 29 W. 5 TH. P.M.
DRAWN 9-9-59 C.C.	BUREAU OF ENGINEERING SURVEY 8-27-59 A.G.C.
CHECKED 11-2-59 D.D.D.	DATUM PROJECT
REVISED	<i>R. Owens</i> 11-4-59 ENGR. SUPV.

REQ.
60-4

FILE
A-338