

*Part Gov't Lot 2  
14-140-29*

*14-140-29*

FE C.S.A.H. NO. 5

BLOCK 24

RE-ARRANGEMENT OF BLOCKS IN END OF THE TRAIL  
CASS COUNTY, MINN.

PROSPECT AVE

BLOCK 25

SYLVAN AVE

W. LINE SEC. 14 - 140 - 29

S 10°44'46"E

1/16 COR. BASED ON PLAT DIST. (TRUE 1/16=1.59' N.)

EAST 844.15'

4.12' N. OF LINE

5.12' N. OF LINE

EAST 844.85'

411.16'

NORTH LINE GOV'T. LOT 2 AS PER RECORD PLAT

N 70°50'34" W 149.10'

40.00'

268.84'

40.00'

84.85'

40.00'

40.00'

40.00'

40.00'

40.00'

40.00'

40.00'

40.00'

40.00'

40.00'

40.00'

40.00'

40.00'

40.00'

40.00'

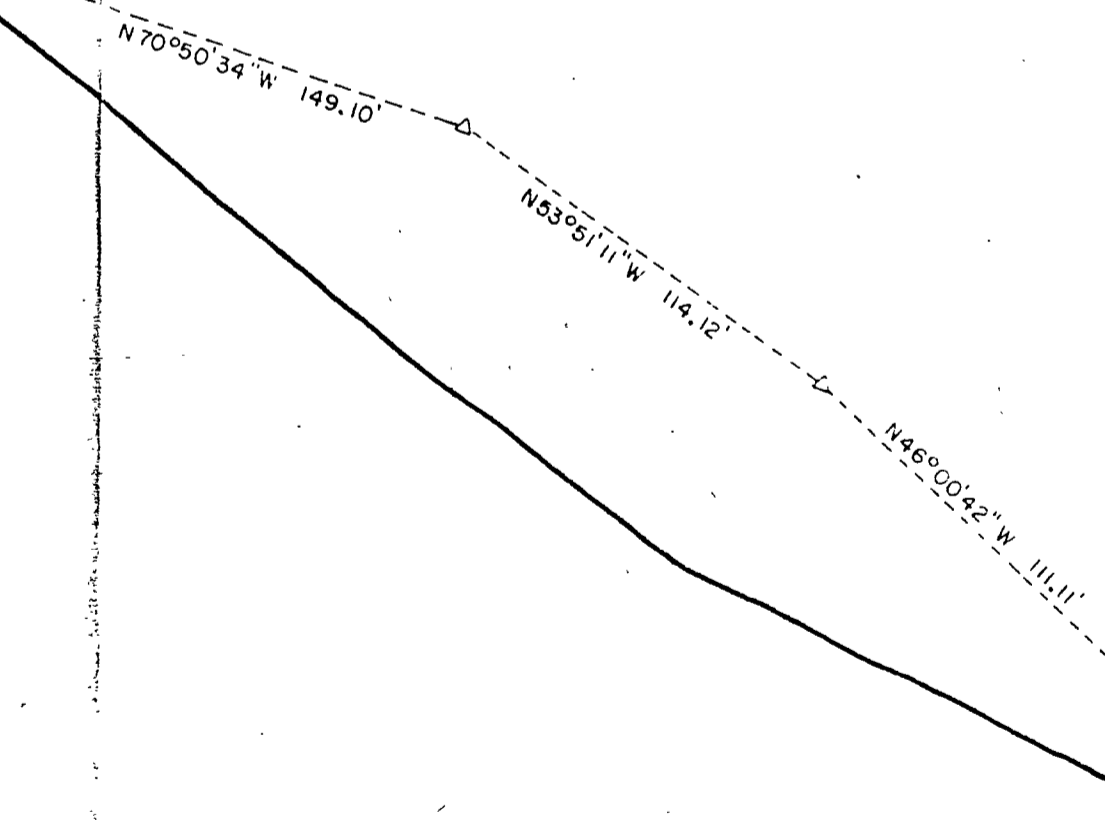
40.00'

40.00'

40.00'

40.00'

40.00'



4.22 ± ACRES

WOMAN LAKE

LAKE



SCALE 1 INCH = 50 FEET

O = IRON PIPE MON. SET

● = IRON PIPE MON. INPL

Δ = SPIKE SET

ORIENTATION OF THIS BEARING SYSTEM IS ASSUMED

M.C. PER CO. RESURVEY

619.91'

1319.60'

N 80°33'33" E 40.47'

6.06'

N 0°38'00" W 399.00'

N 0°38'00" W 400.36'

40.00'

40.00'

40.00'

40.00'

40.00'

40.00'

40.00'

40.00'

40.00'

40.00'

40.00'

40.00'

40.00'

40.00'

40.00'

40.00'

40.00'

40.00'

40.00'

40.00'

40.00'

40.00'

40.00'

40.00'

40.00'

40.00'

40.00'

40.00'

40.00'