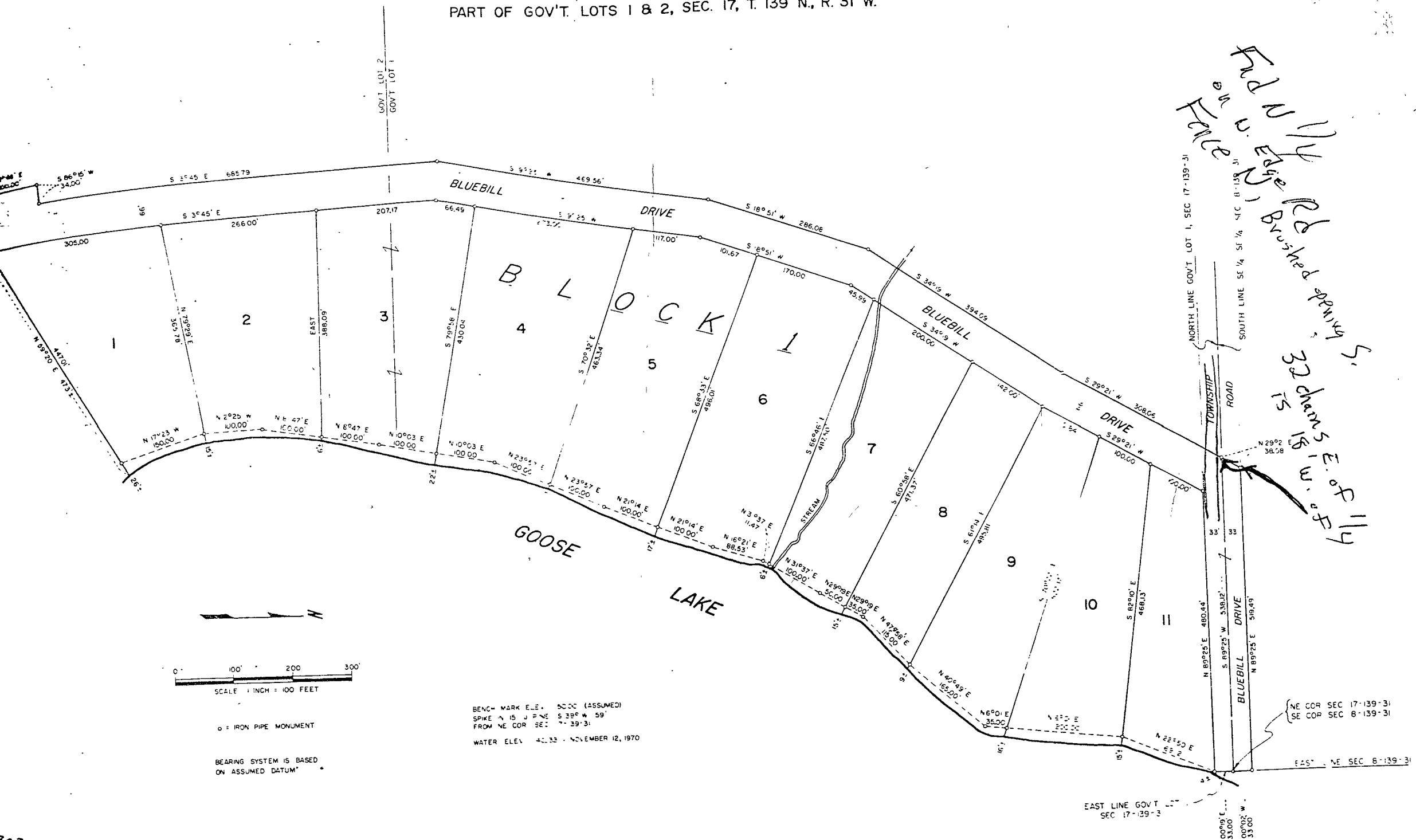
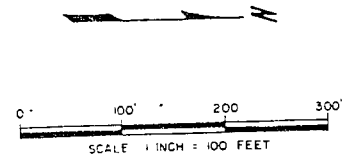


PART OF GOV'T. LOTS 1 & 2, SEC. 17, T. 139 N., R. 31 W.



Handwritten notes:
 Found by
 Feltner, Brushed spring S.
 32 chains E of 1/4
 15 1/2 m. of E



○ = IRON PIPE MONUMENT

BENCH MARK ELEV. 5000 (ASSUMED)
 SPIKE N 15 1/2° E 538.12' W 59'
 FROM NE COR SEC 17-139-31
 WATER ELEV. 42.33 - NOVEMBER 12, 1970

BEARING SYSTEM IS BASED ON ASSUMED DATUM*

NE COR SEC 17-139-31
 SE COR SEC 8-139-31

EAST LINE GOV'T LOT 1, SEC 17-139-31