

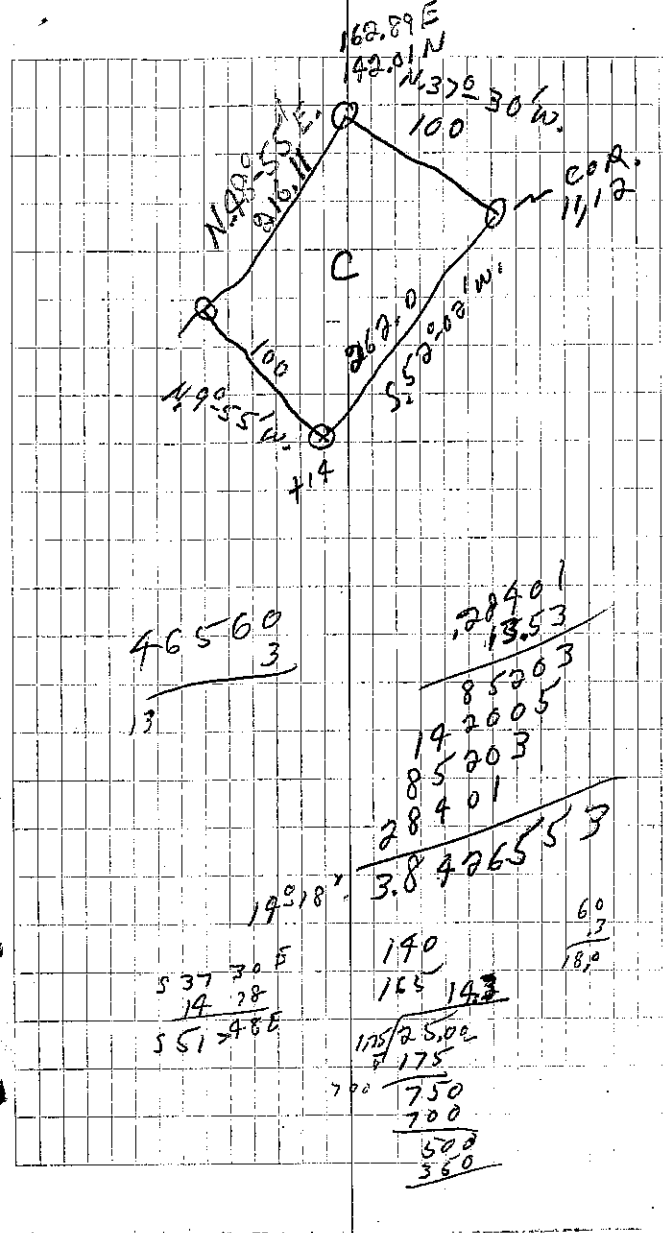
PLAT OF ROCHELEAU'S POINT
 GOVT. LOT 9 SECTION 26 FILE 79
 TOWNSHIP 139 NORTH RANGE 26 WEST OF
 5TH PRINCIPLE MERIDIAN

TRACT A

BEGINNING AT THE CORNER OF
 LOT 3 AND 4 AT THE ROAD, THENCE
 N. 37°-30' W. A DISTANCE OF 100.0 FEET
 THENCE N. 59°-07'-30" E. A DISTANCE
 OF ~~133.74~~ ^{133.74} TO LAKE, THENCE S. 49°-35' E.
 ALONG LAKE 100.0' THENCE S. 52°-00' W.
 A DISTANCE OF ~~174.0~~ ^{142.80} TO POINT OF
 BEGINNING, DESCRIBING TRACT A
 CONTAINING 0.4 OF AN ACRE MORE OR
 LESS

TRACT B

COMMENCING AT THE CORNER OF LOT
 3 AND 4 AT THE ROAD, THENCE N. 37°-30' W.
 A DISTANCE OF 100.0' TO POINT OF
 BEGINNING, THENCE N. 37°-30' W. A DISTANCE
 OF 86.47' THENCE N. 31°-00' W. A DISTANCE
 OF 13.53' THENCE N. 52°-00'-30" E. A DISTANCE
 OF ~~136.0~~ ^{131.33} TO LAKE, THENCE ~~S. 52°-07'-30" W.~~
 S. 49°-35' E
 ALONG LAKE A DISTANCE OF 100.0 FEET
 THENCE S. 52°-07'-30" W. A DISTANCE OF
 133.74' TO POINT OF BEGINNING
 DESCRIBING TRACT B CONTAINING
 0.28 OF AN ACRE MORE OR LESS



46560
 3
 13

28401
 13.53
 85203
 192005
 85203
 28401
 38426553

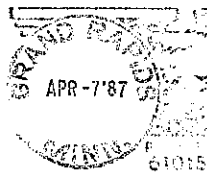
19°18'

53730 E
 14 28
 551488

140
 165 143
 175
 700
 750
 200
 500
 360

60
 180

ITASCA COUNTY SURVEYOR
 COURTHOUSE
 GRAND RAPIDS, MINNESOTA 55744



Walt Curo
 Cass County Surveyor
 Cass County Courthouse
 Walker, MN
 56484

PART OF GOVT LOT 9
 28/142/26