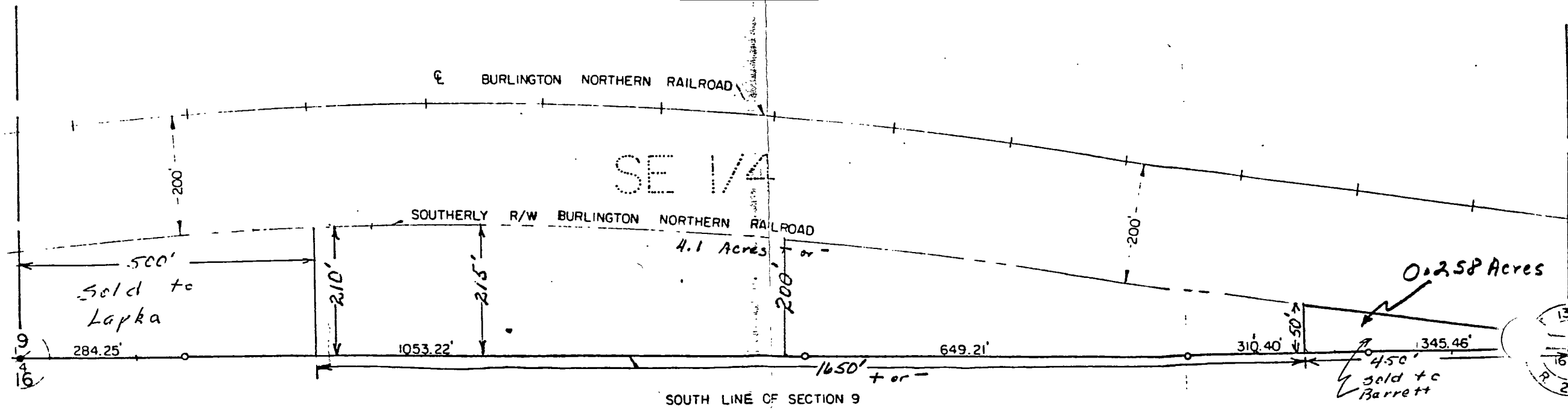


9-133-29

# PLAT OF SURVEY

## SOUTH LINE OF SOUTHEAST 1/4 SECTION 9, T. 133 N., R. 29 W. CASS COUNTY, MN.

Dark line on copy



SCALE: 1" = 200'

● = IRON MONUMENT FOUND IN PLACE

○ = 1/2" IRON PIPE WITH PLASTIC

DEAN M. ANDERSON  
 Reg. Prof. Engr. & Land Surveyor  
 Minn. Registration No. 3091

Lapka Acres.  
 All dimensions shown by Knudsen are approximate.