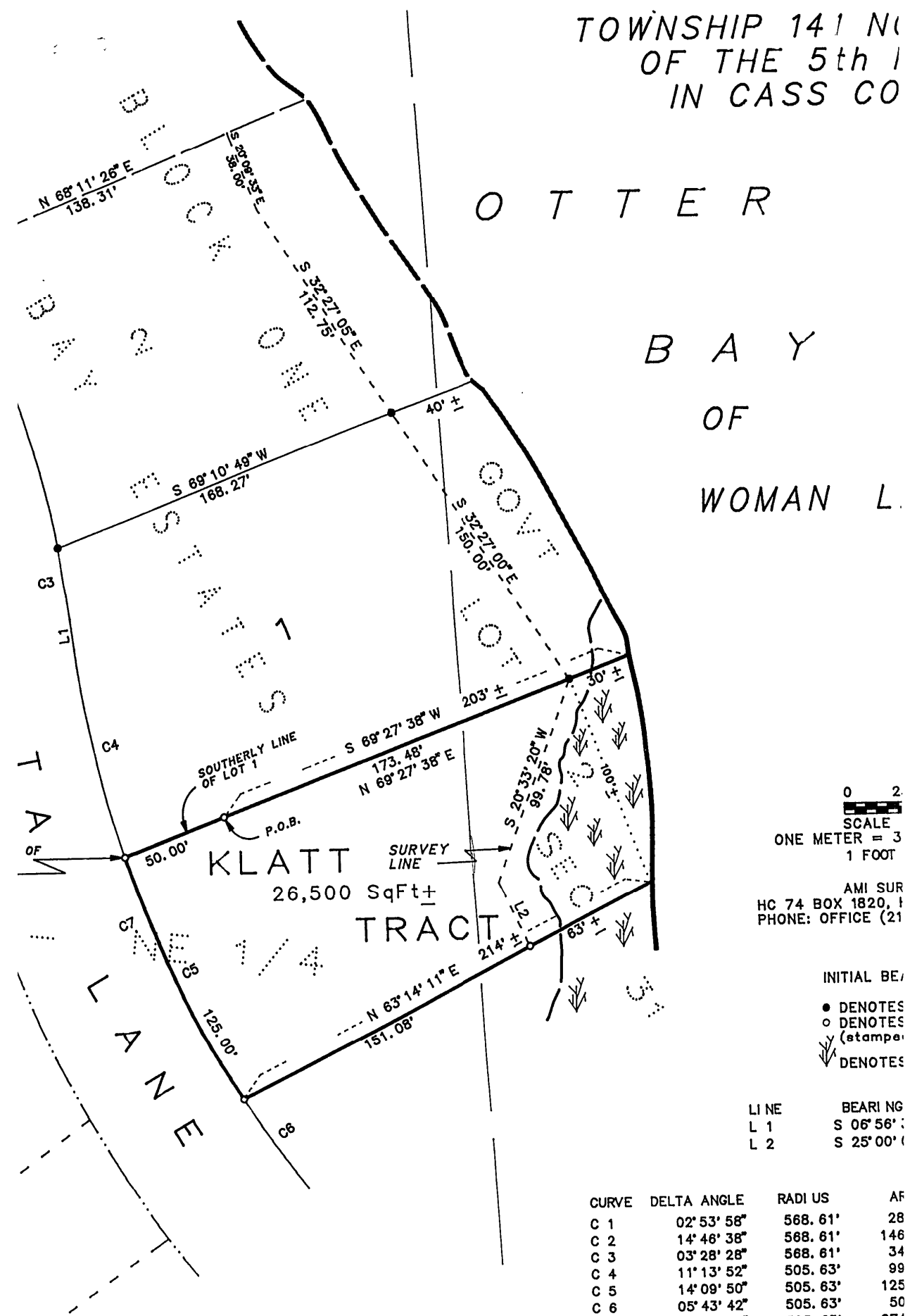


TOWNSHIP 141 N  
OF THE 5th R  
IN CASS CO



CURVE	DELTA ANGLE	RADIUS	ARC
C 1	02° 53' 58"	568.61'	28
C 2	14° 46' 38"	568.61'	146
C 3	03° 28' 28"	568.61'	34
C 4	11° 13' 52"	505.63'	99
C 5	14° 09' 50"	505.63'	125
C 6	05° 43' 42"	505.63'	50
C 7	31° 07' 24"	505.63'	274
C 8	18° 15' 06"	568.61'	181
C 9	21° 09' 04"	568.61'	208