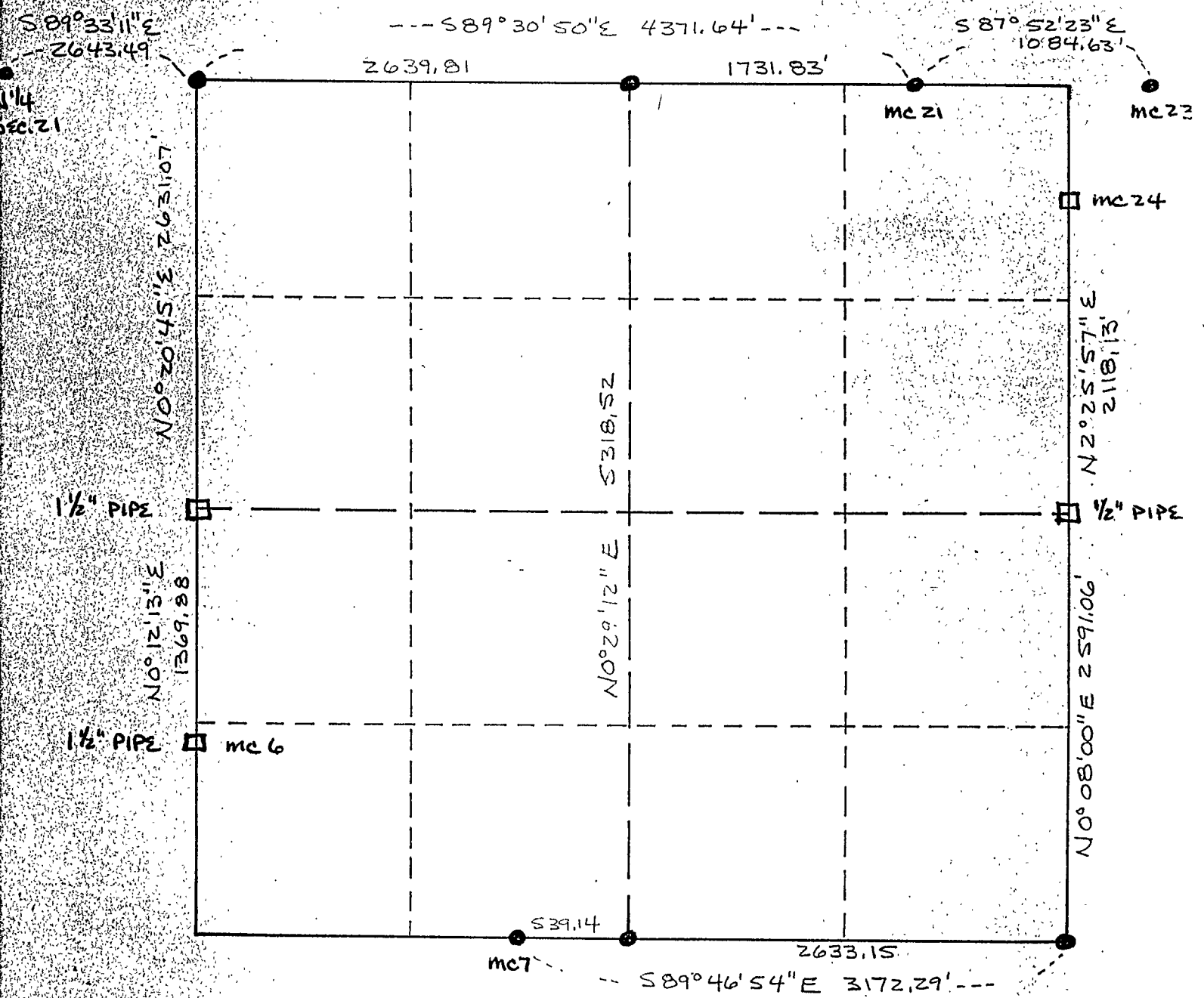


Gary Stevenson & Associates, Inc.
Box 292 Walker, MN

Section Subdivision Map

Sec. 22, T. 139 N, R. 29 W

CASS, County



- - CERTIFIED CORNER
- - INPLACE CORNER - NOT VERIFIED

NOTE: AT EAST 1/4 COR POSSIBLE CORN FROM HORST'S BT IS N72°16'17" 35.47' FROM PIPE.

Orientation of this bearing system is ASSUMED