

NW COR NW 1/4 - NE 1/4

S 89° 44' 42" E  
741.30

1295.94

NORTH LINE OF NW 1/4 - NE 1/4  
230.19

211.20

18.99

# PLAT OF SURVEY

PART OF NW 1/4 - NE 1/4  
SEC 30, T 140N, R 30 W

STATE HIGHWAY NO. 371

33 FOOT ROAD

E OF 33 FT  
ROAD EASEMENT

A

183.50  
S 60° 34' 43" W  
200.00

183.50  
S 60° 34' 43" W  
200.00

183.50  
S 60° 34' 43" W  
200.00

S 60° 34' 43" W  
33.00

183.50  
N 60° 34' 43" E

N 60° 34' 43" E

C

D

E

SCALE 1" = 100'

BEARINGS ASSUMED

● = IRON MON IN PLACE

○ = 1" IRON PIPE MON STAMPED  
11395 ESTABLISHED

∇ = LOW WET AREA

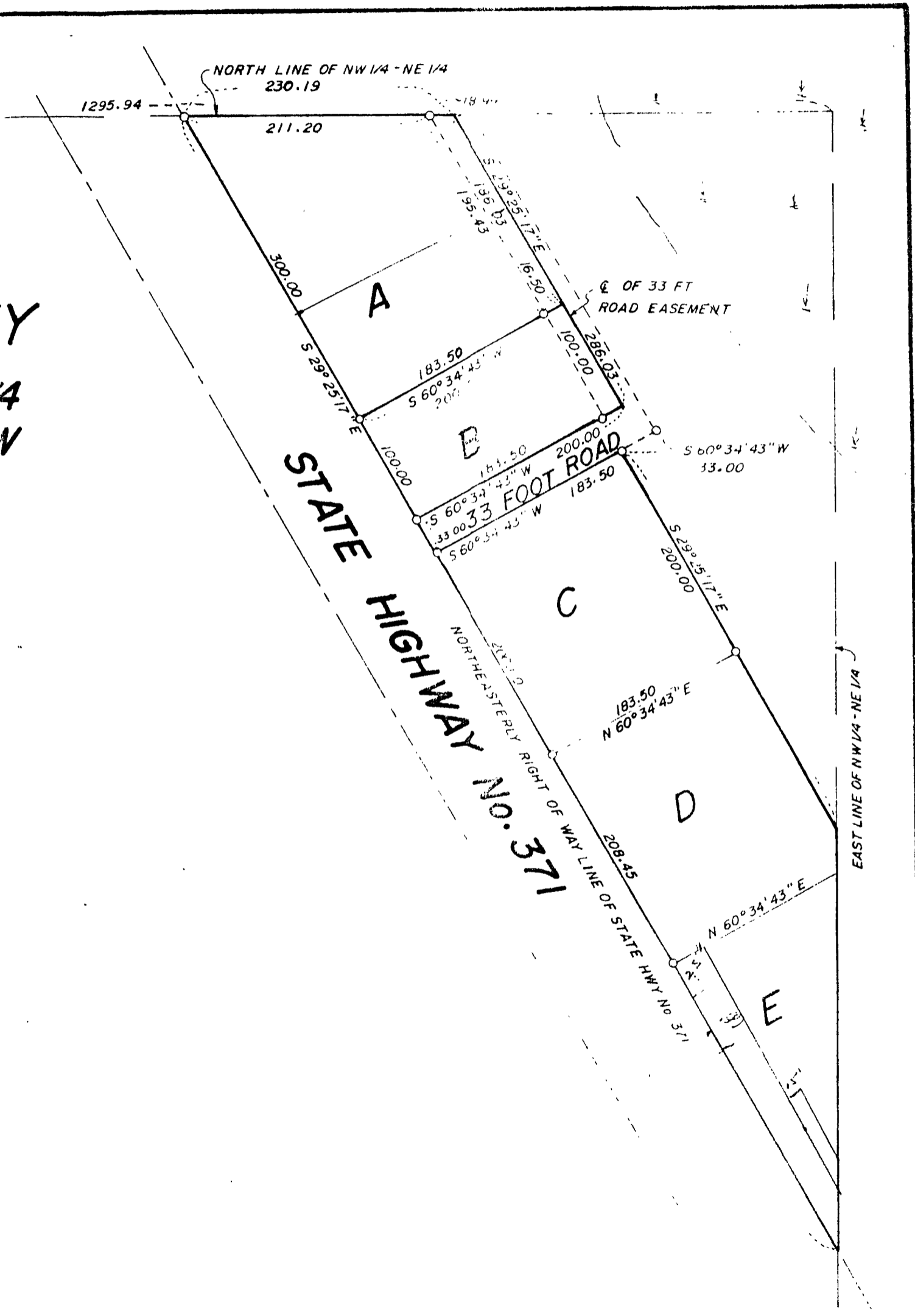
I hereby certify that this survey, plan, or report was prepared by me or under my direct supervision and that I am a duly Registered Land Surveyor under the laws of the State of Minnesota.

*Walter E. ...*

Hackensack

30-140-30

Y  
4  
V



EAST LINE OF NW 1/4 - NE 1/4

