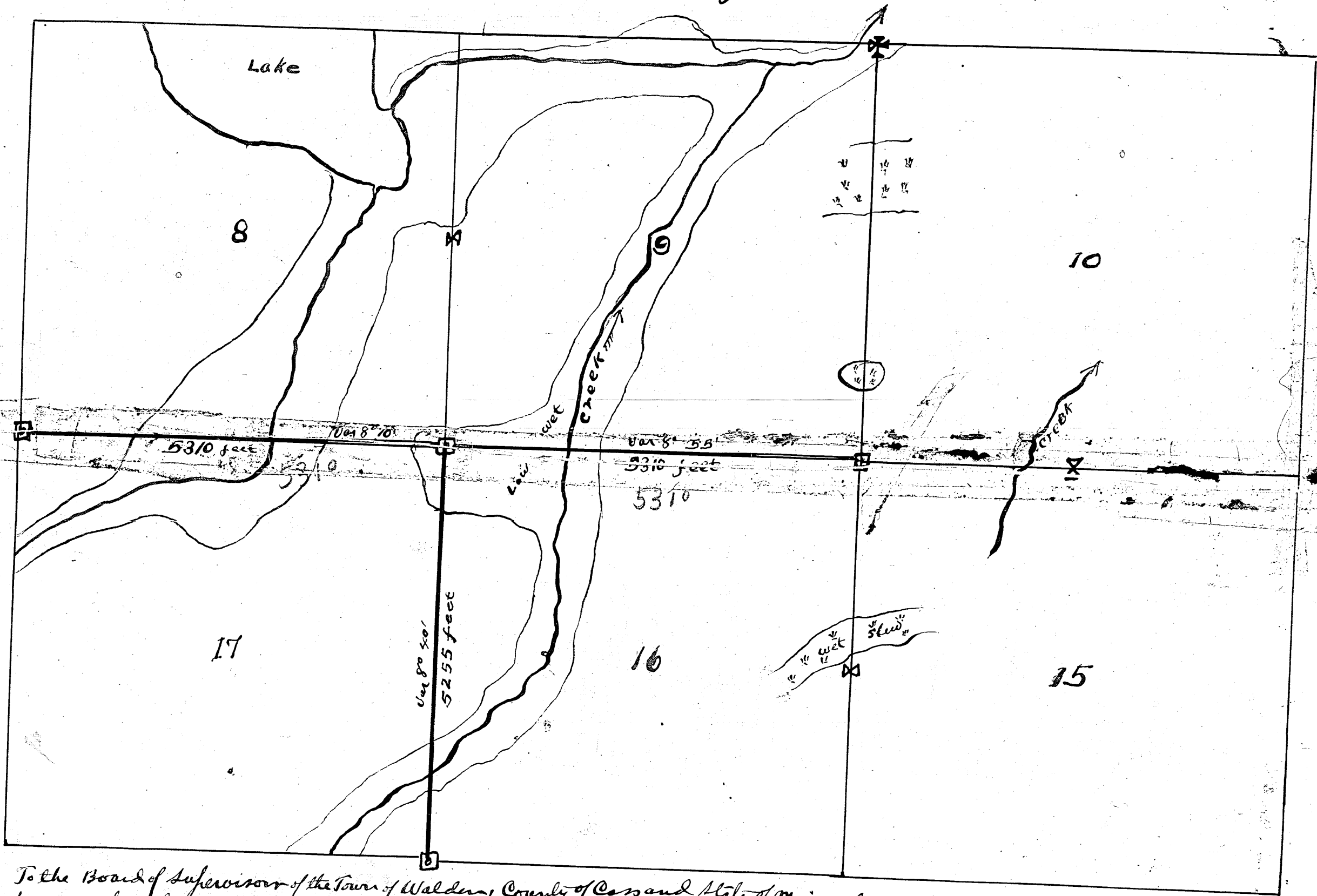


Walden April 22-1907
Curo

137-30

Township 137 N Range 30 W 5th P.M.



Only needed with town board
Apr 23rd 1907

To the Board of Supervisor of the Town of Walden, County of Cass and State of Minnesota:
 I have been employed by you to make a survey of a road in said town and would report that the following is a correct survey of the line thereof as made by me under your directions, to wit: Beginning at the corner of sections 7, 8, 17 and 18: Thence East following the line between sections 8 and 17, Var 8° 10', 5310 feet to corner of sections 8, 9, 16 and 17: Thence East following the line between sections 9 and 16, Var 8° 55', 5310 feet to corner of sections 9, 10, 15 and 16: Then a line beginning at the corner of sections 10, 17, 20 and 21 and running North following the line between sections 16 and 17 Var 8° 40', 5255 feet intersecting the road line above described at corner of sections 8, 9, 16 and 17 above is a correct plot of said road according to said survey.

Pine River Minnesota Apr 22nd A.D. 1907
 John W. Curo
 Co Surveyor Cass Co Minnesota

#6524