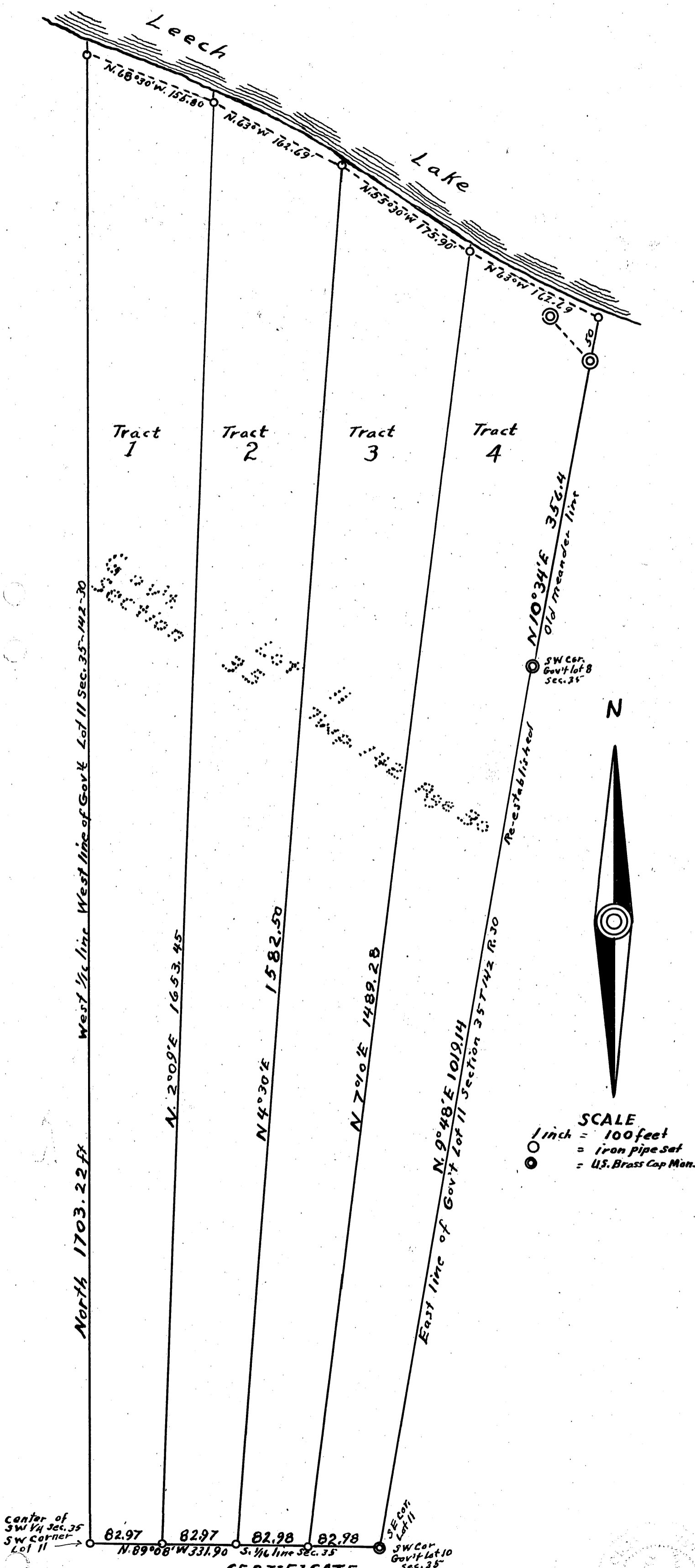


# SKETCH of

Government Lot 11 Section 35 Township 142<sup>N</sup> Range 30<sup>W</sup> of 4<sup>th</sup> Cass County Minnesota

Surveyed and prepared by Harold Curo, County surveyor of Cass County  
Showing said Gov't lot 11 divided into 4 tracts of land with equal footage at the North end and the south end. Dated this 17<sup>th</sup> day of March 1959



### CERTIFICATE

I the undersigned Harold Curo hereby certify that I am a Registered Land Surveyor in the State of Minnesota that I have surveyed lot 11 section 35 Twp 142 Rge 30 and set iron pipe monuments at points shown on this sketch. That this sketch is correct.

#6517

Harold Curo  
Harold Curo Minn. Reg. No. 3417