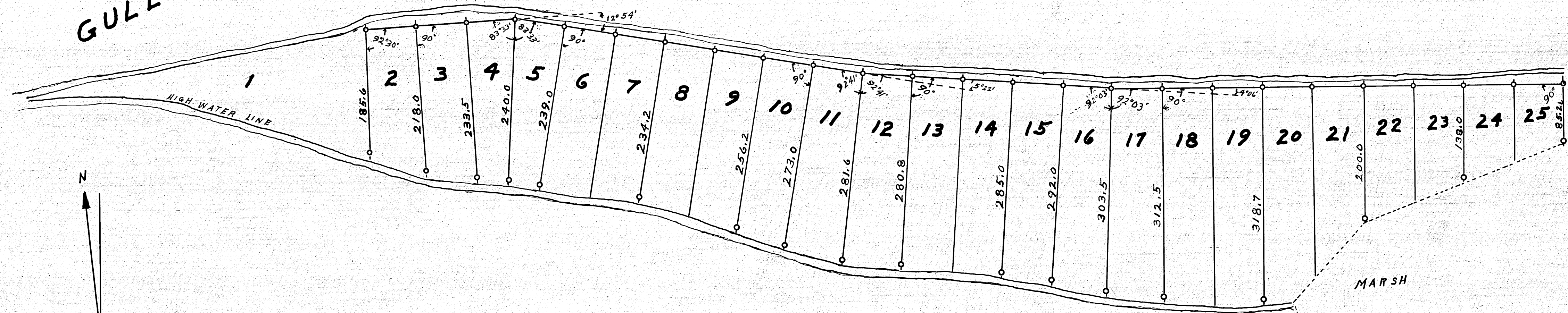


GULL LAKE

SQUAW POINT



NOTE ALL LOTS ARE PERPENDICULAR TO BASE-LINE EXCEPT AS SHOWN
 "O" INDICATE IRON PINS SET
 SCALE 1" = 200' 75 FEET WIDE ON BASE-LINE
 Part of Sec. 17-134-29-5th PM.
 MAY 3, 1915

F.A. GLASS Engr.

1/4" line roughing approx

Approx center of section