

Plat of
Shingobee Island.
A Part of Lot 5 - Sec. 2 - 141-31

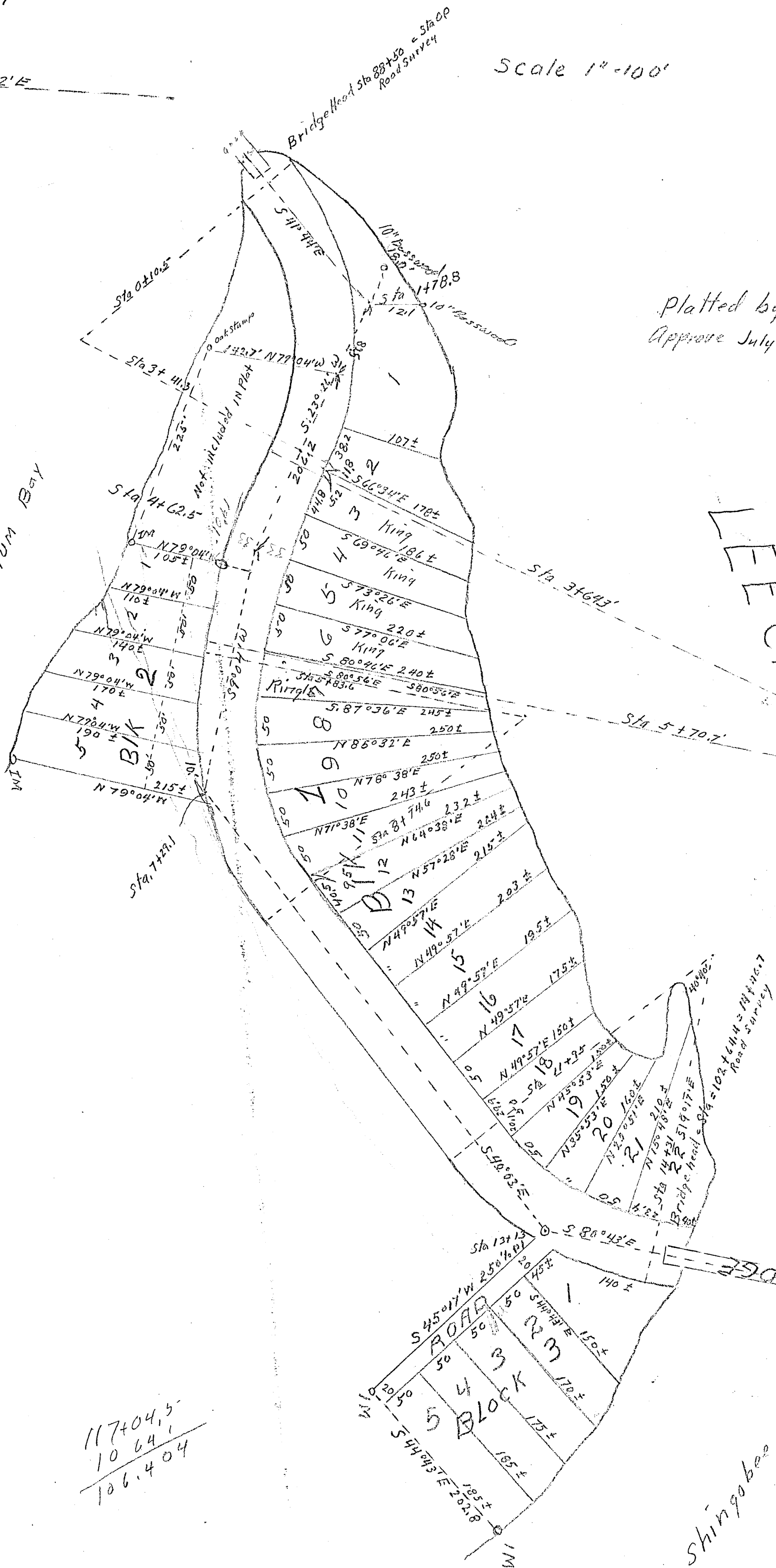
Town Line $S87^{\circ}52'E$

Scale 1" = 100'

Platted by John M Greene
Approved July 6th 1923

SANITARIUM BAY

LEECH LAKE



67884
66134
15244
21514
46914

117404.5
10641
106404

Shingobee Bay