

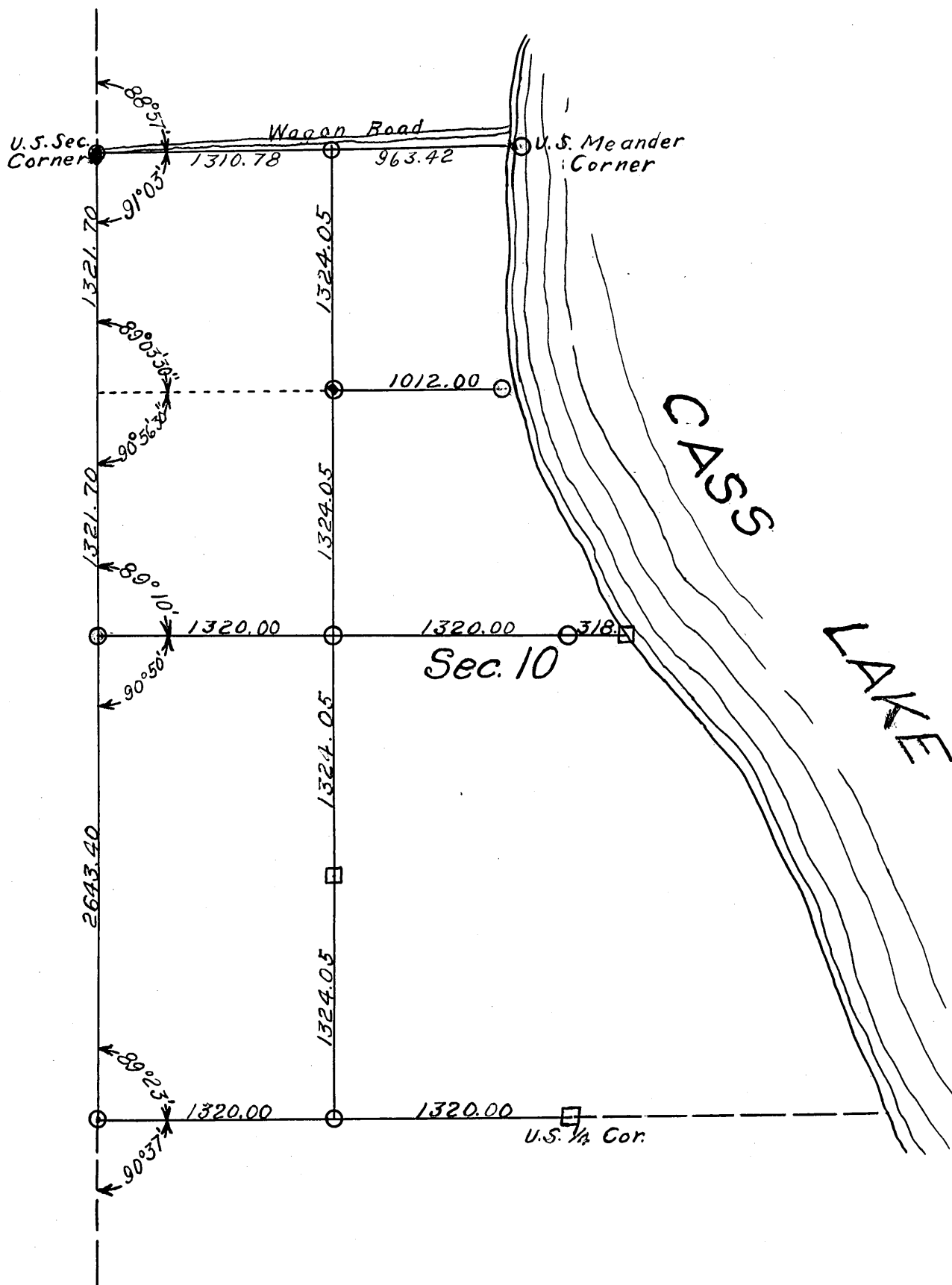
First

PLAT OF
 SEC. 10 T. 145 N. R. 31 W. 5 P. M.
 Sub-division lines and iron monuments
 as partly surveyed by
 John W. Curo,
 County Surveyor, Cass Co. Minn.

Scale: 1"=200"

July 1st and 1907
 May 31st and 1913

Legend: ○ = Iron monuments.
 □ = Wooden hubs.



#6304