

PLAT of COUGHLIN BEACH

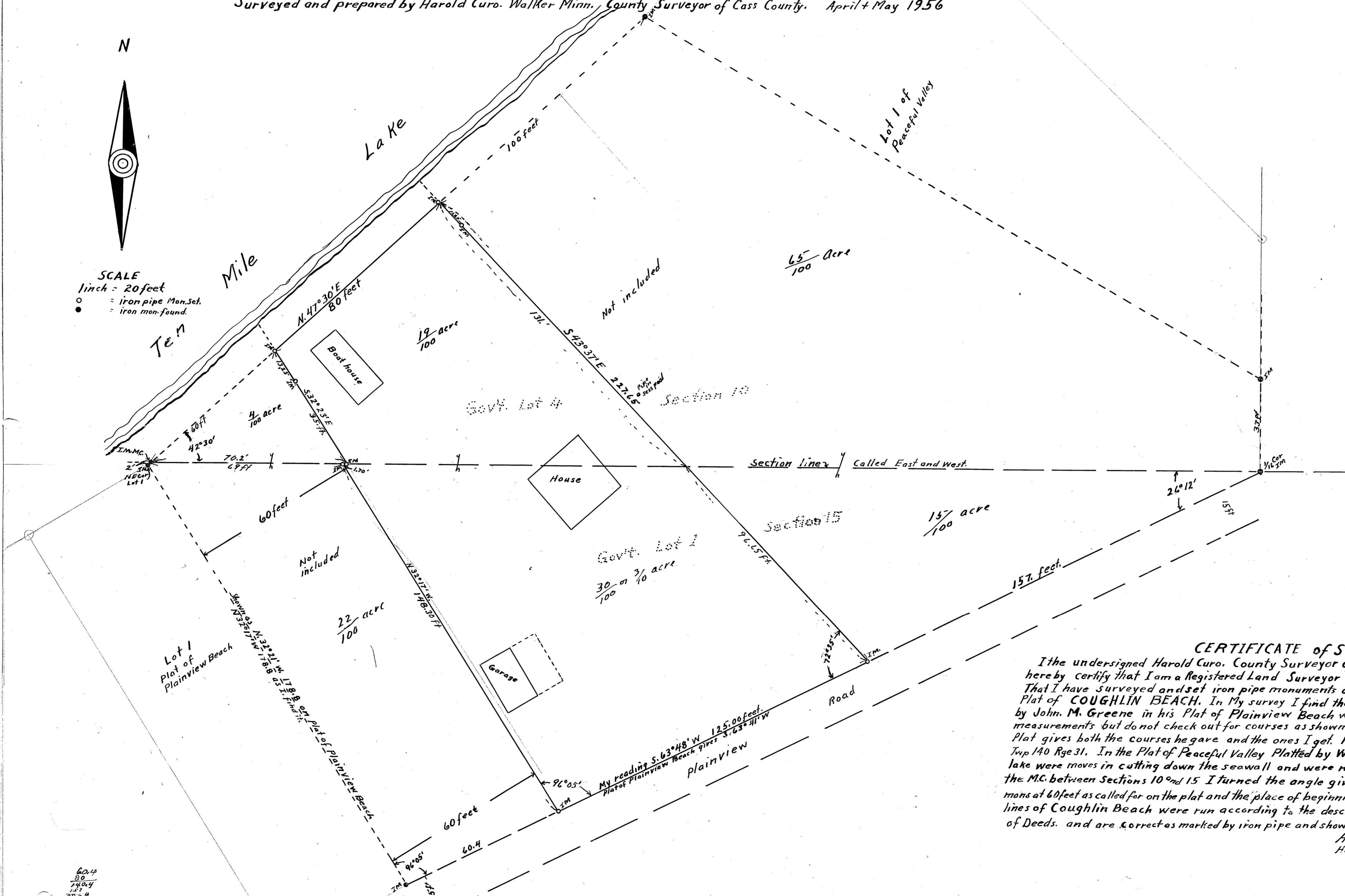
Being a part of that part of lot 1 Section 15 Twp 140 Rge 31 marked NOT INCLUDED in Plat of Plainview Beach
and a part of that part of Lot 4 Section 10 Twp 140 Rge 31 marked Not Included in Plat of Peaceful Valley: both Plats being
onfile in the Office of the Register of Deeds Walker Minnesota
Surveyed and prepared by Harold Curo, Walker Minn., County Surveyor of Cass County. April + May 1956

N



SCALE

1 inch = 20 feet
○ = Iron pipe Mon. Set.
● = Iron mon. found.



CERTIFICATE of SURVEYOR

I the undersigned Harold Curo, County Surveyor of Cass County Minnesota hereby certify that I am a Registered Land Surveyor in the State of Minnesota that I have surveyed and set iron pipe monuments at the points as shown on this Plat of COUGHLIN BEACH. In My survey I find the iron pipe monuments set by John M. Greene in his Plat of Plainview Beach which check perfect for measurements but do not check out for courses as shown on Plat of Plainview Beach, this Plat gives both the courses he gave and the ones I got. Plainview Beach is in Govt Lot 1 Sec. 15 Twp 140 Rge 31. In the Plat of Peaceful Valley Platted by W.J. Spain Jr. the stakes along the lake were moves in cutting down the seawall and were not re-set by a surveyor. From the M.C. between Sections 10 and 15 I turned the angle given on the plat and set iron pipe mons at 60 feet as called for on the plat and the place of beginning in the description. The boundary lines of Coughlin Beach were run according to the description as recorded in the Register of Deeds, and are correct as marked by iron pipe and shown on this plat.

Harold Curo
Harold Curo Minn. Reg. No 3417

60.4
80
140.4
187
237.4

#6301