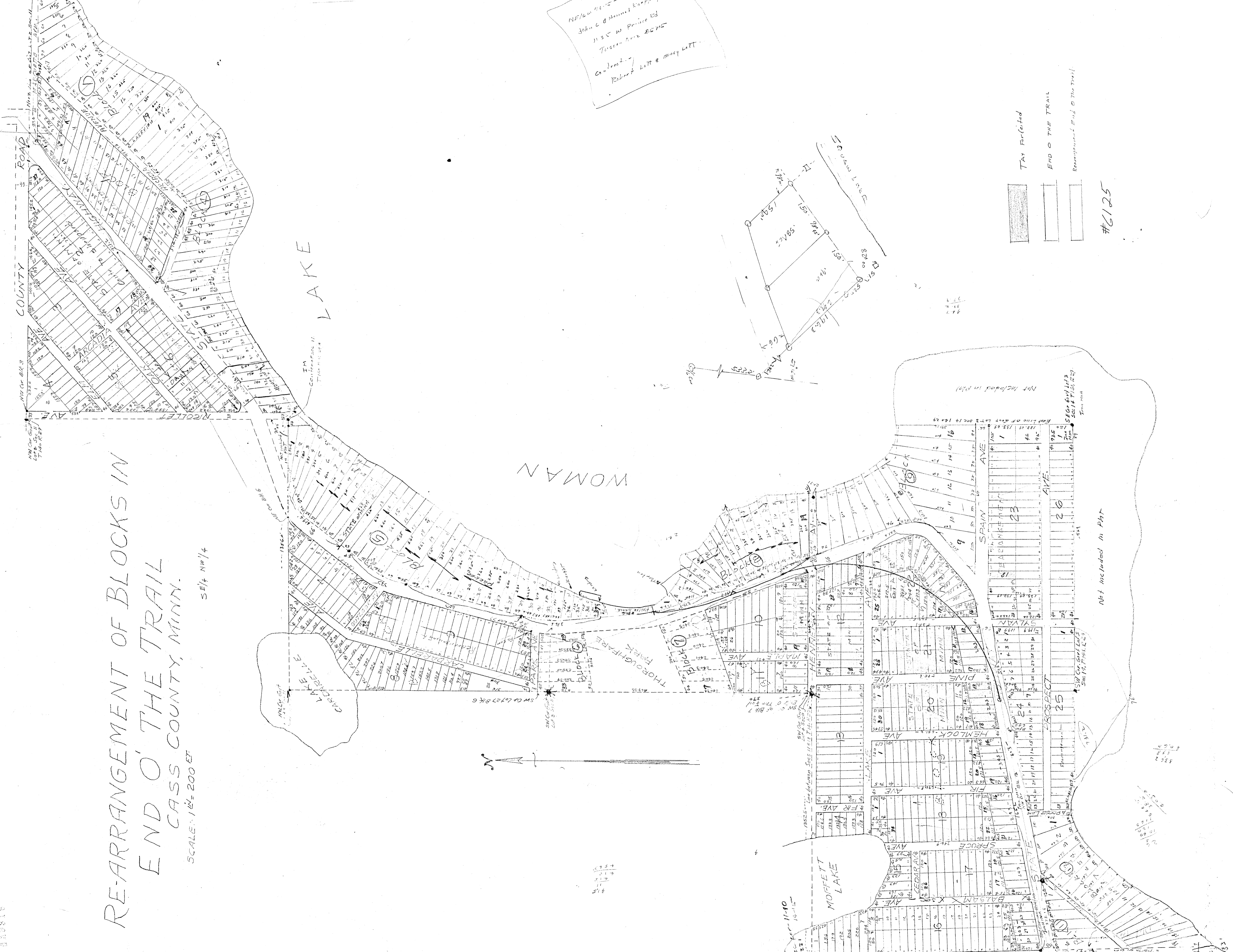


RE-ARRANGEMENT OF BLOCKS IN  
 END O' THE TRAIL  
 CASS COUNTY, MINN.

SCALE 1 IN. = 200 FT.

SE 1/4 NW 1/4



NE 1/4 of Section 11  
 John C. & Annie K. Koopman  
 11 3/4 W. Prairie Ed  
 Tuscon Ave SE 1/4  
 Contracted by  
 Robert Lett & Nancy Lett

- TAY Forfeited
- END O THE TRAIL
- Rearrangement End O The Trail

#6125