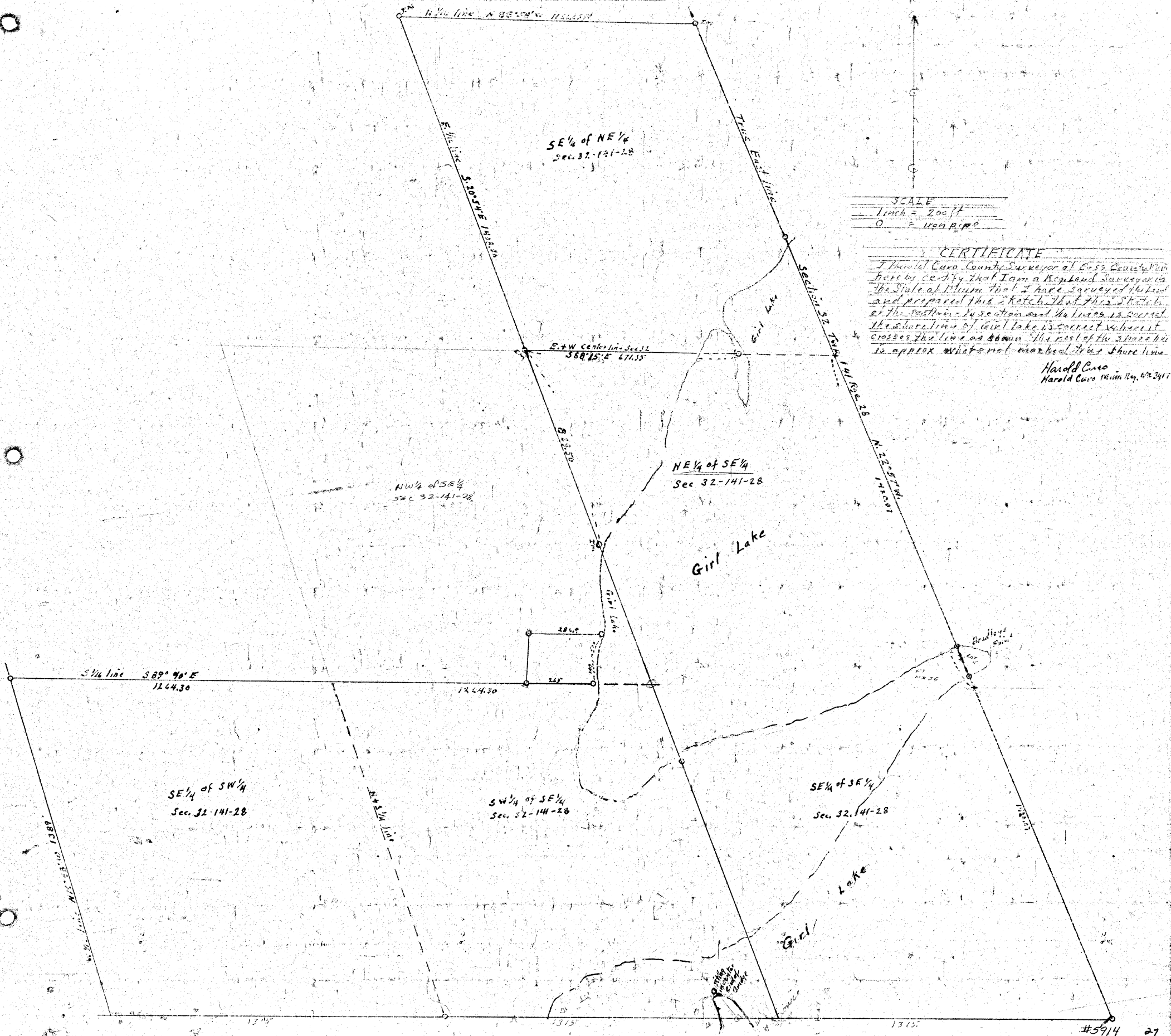


SKETCH

Showing a part of section 32, Twp 146 N., R. 20 E., which has been surveyed by Standard Survey by John W. Curo and Harold Curo in 1940. The line and lot of section 32 surveyed by John W. Curo and Harold Curo in 1940 is recorded in Book 5, page 217 of the Register of Deeds for the State of Michigan and the S.W. line surveyed in 1958 by Harold Curo is also recorded in the same book. The bearings and measurements shown herein are correct.



SCALE
1 inch = 200 ft
0 = iron pipe

CERTIFICATE

I, Harold Curo, County Surveyor of Cass County, Michigan, hereby certify that I am a Registered Surveyor in the State of Michigan that I have surveyed the land and prepared this sketch that this sketch is of the section in question and the lines is correct. The shore line of Girl Lake is correct where it crosses the line as shown. The rest of the shore line is approx. where not marked by a shore line.

Harold Curo
Harold Curo Mich. Reg. No. 2417