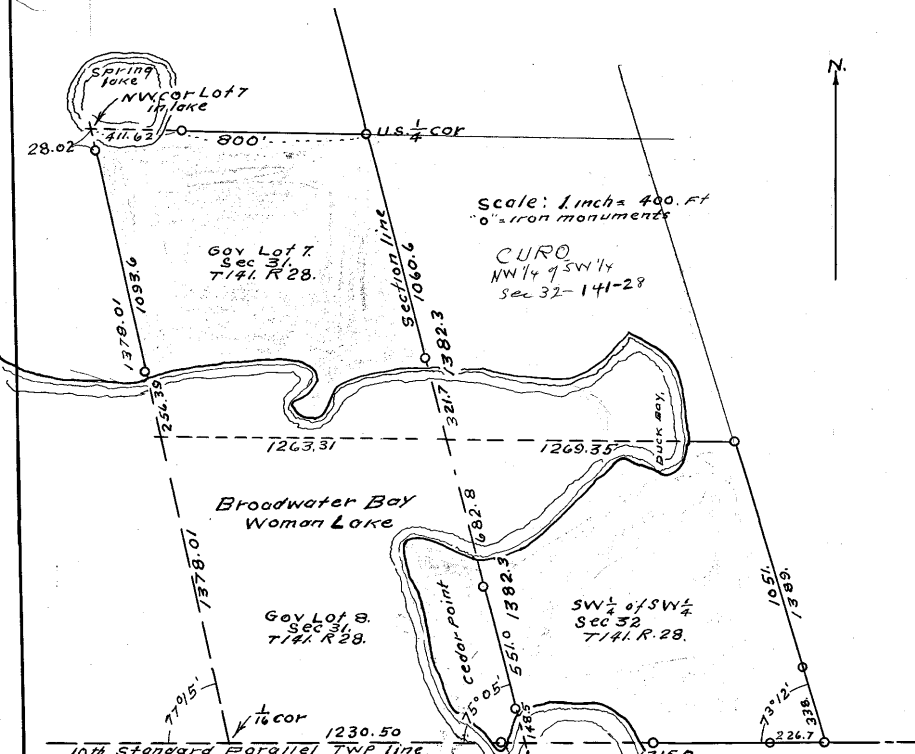


REC-KEY
100
05

1.A.

Plot: Showing C. E. Merry lake shore lands, being All of
Gov Lots 7 and 8 in Section 31, and SW 1/4 of SW 1/4 Sec 32,
All in T. 141. R. 28, Cass Co. Minnesota. Survey made 1939 and
1940. Completed June 24 1940. Surveyed by John W. Curo of Walker
Minn.



Certificate
I hereby certify that I surveyed and
monumented the land shown hereon and that the
survey is correct as shown by this plot
Dated at Walker Minnesota, this 28th day of June 1940.

Minn Reg No 1428
seol
John W. Curo
County Surveyor
Cass Co. Minn

#5888