

# BLOCK 57 PINE RIDGE CEMETERY SECOND ADDITION. PINE RIVER, MINNESOTA.

SCALE: 1"=20'

JOHN W. CURT  
Surveyor.  
Jenkins, Minn.

$\Delta = 59^{\circ} 42'$   
 $T = 132.52$   
 $Z = 33^{\circ} 40' C.$   
 $L = 276.93$   
 $B = 265.78$



WAY.

ENTRANCE

WESTERN

BOULEVARD.

To PINE RIVER

COUNTY

Center line of County Road.

ROAD.

# BLOCK 58 PINE RIDGE CEMETERY SECOND ADDITION. PINE RIVER, MINNESOTA.

SCALE: 1" = 20'

JOHN W. GURO,  
Surveyor,  
Jenkins, Minn.

to B.C. 320.0

$\Delta = 91^{\circ}33'$   
 $T = 278.0$   
 $21^{\circ}10'50" C.$   
 $L = 431.8$   
 $R = 270.6$

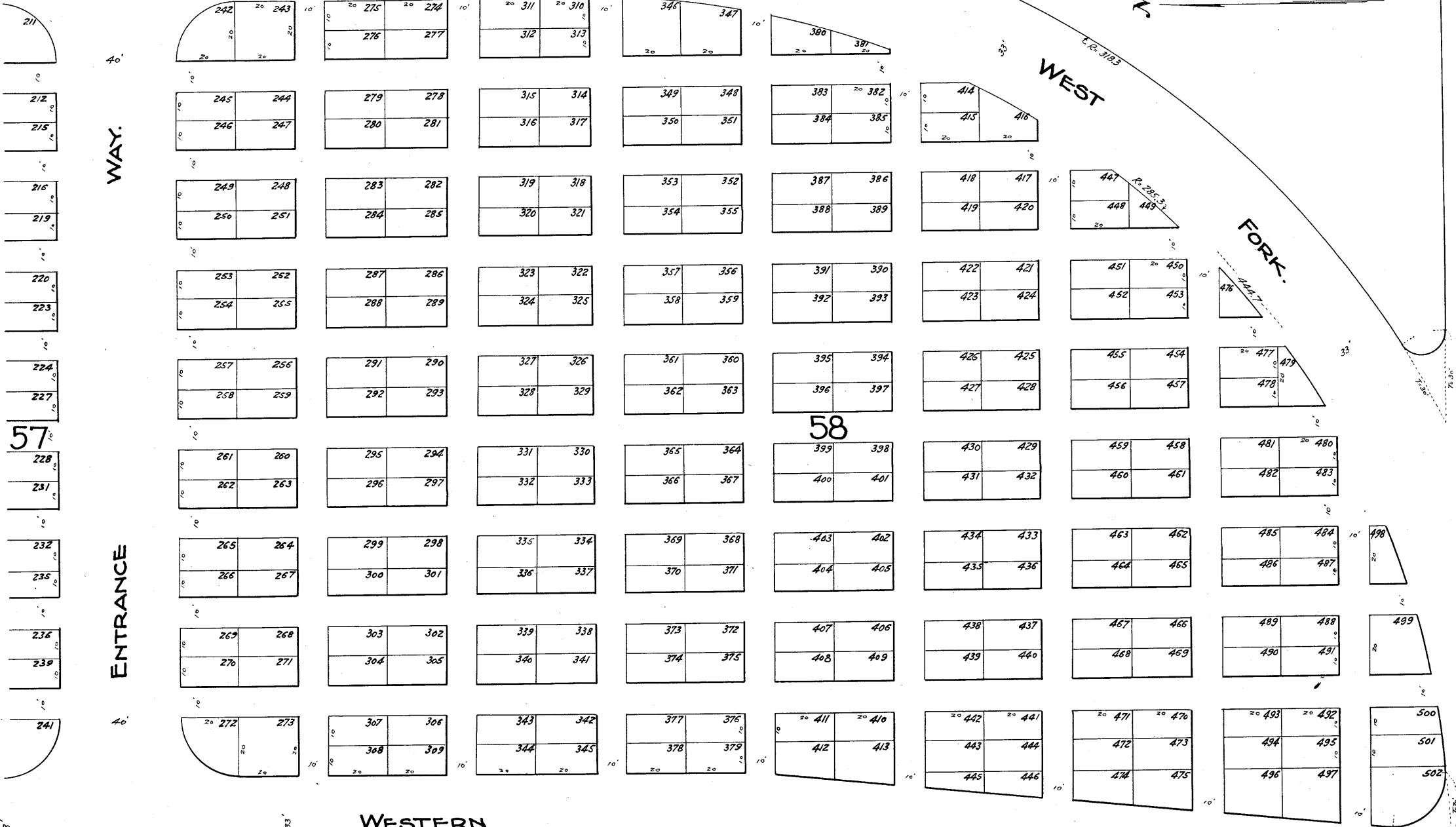
CIRCLE

DRIVE.

EAST FORK.

ROAD.

SOUTH



58

WESTERN

BOULEVARD.

COUNTY

ROAD.

Center line of County Road.

#5884

South line of N.E. 1/4 of SW 1/4, Sec. 6, T.137, R.20.