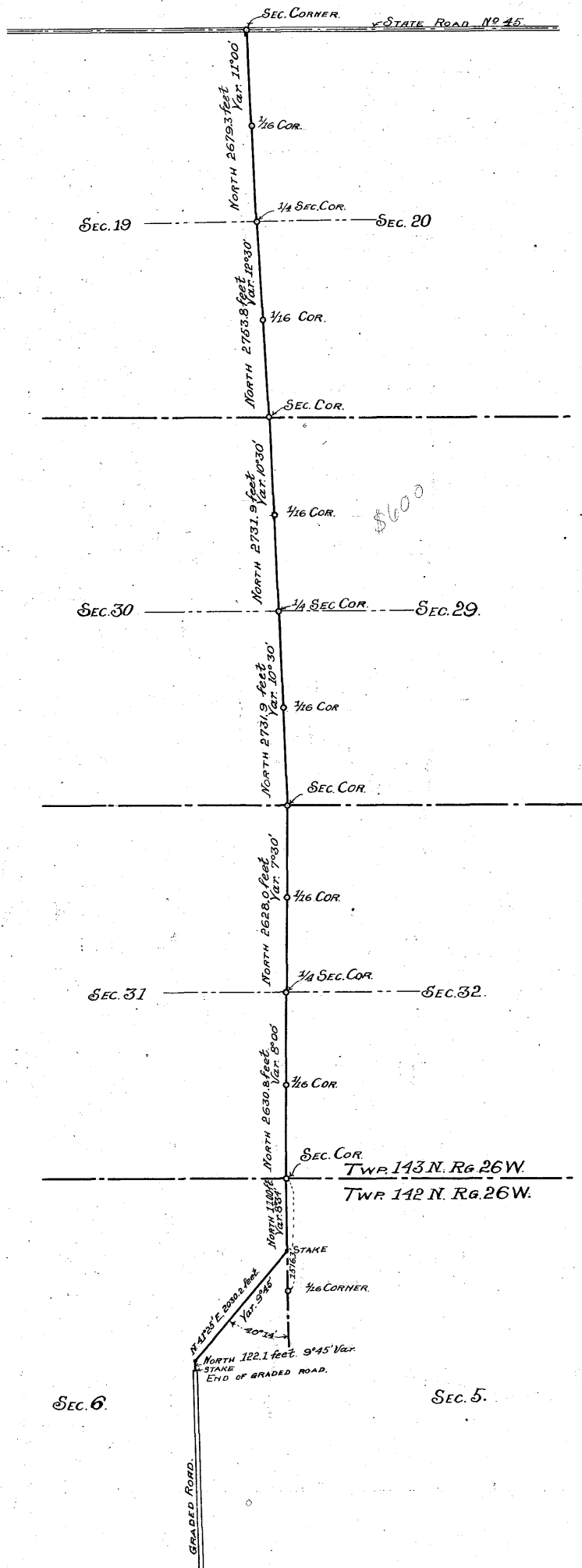


2

SEC. 18

SEC. 17



PLAT OF SLATER ROAD COUNTY ROAD

SURVEYED BY JOHN W. CURO, COUNTY SURVEYOR
 P. M. SCOTT, FIELD ENGINEER
 Surveyed Oct. 9 to Oct. 24, 1915.
 Scale 1 in = 1000 ft.

Assistants

D. H. Slater Sr. axe & chain
 D. H. Slater Jr. " "
 Charles Holt " "

254

SEC. 6.

SEC. 5.