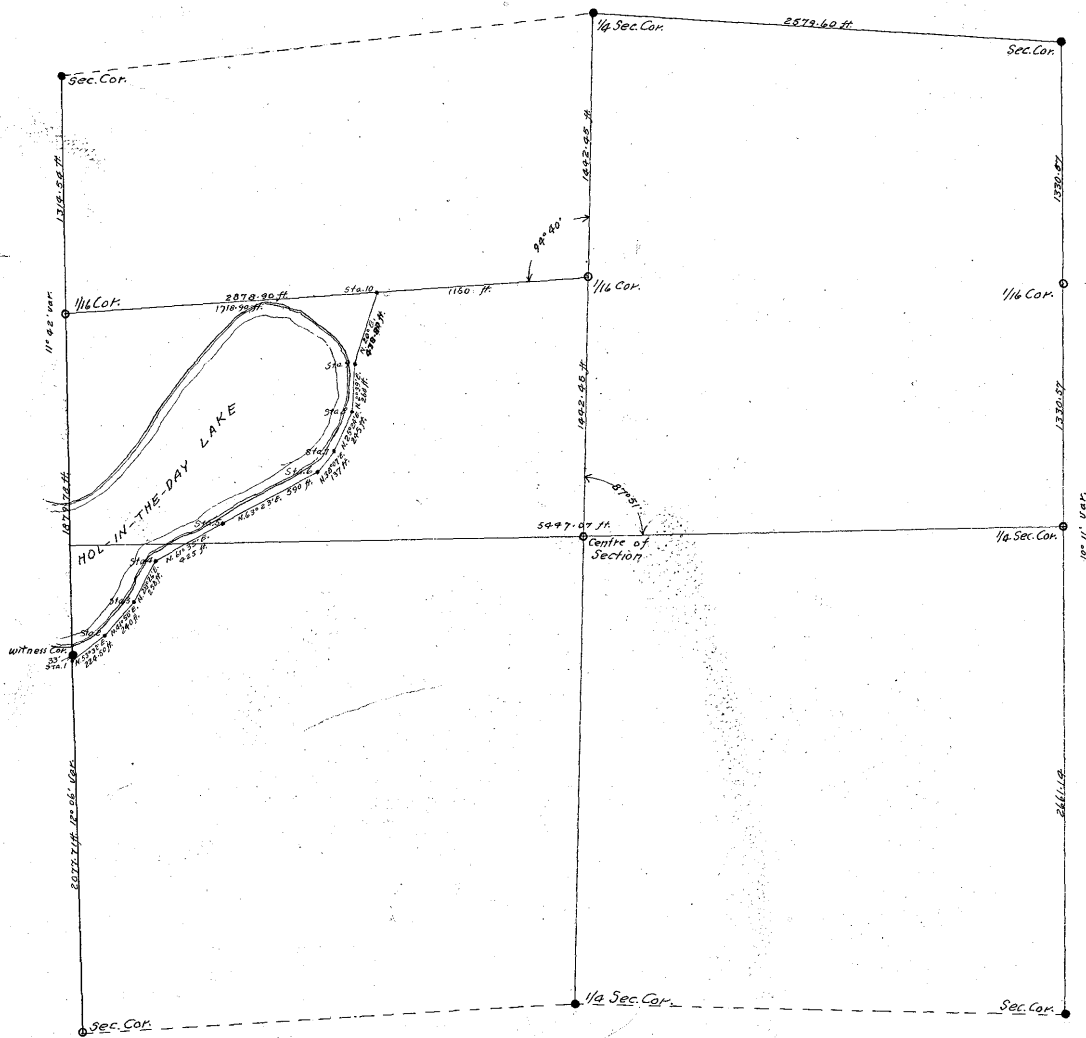


PLAT OF SURVEY OF SEC. 7, T. 133, R. 29 W., 5TH P.M.

SURVEY MADE BY J.W. CURRO, begun Mar. 21, 1911, finished May 3, 1912.

SCALE: 1 IN. = 500 FT.



- Cor. set from Old Gov't. B.T's. 4" x 3/8" pipe in Cement
- Cor. Established on this Survey 4" x 3/8" " "
- Road survey shown in red.