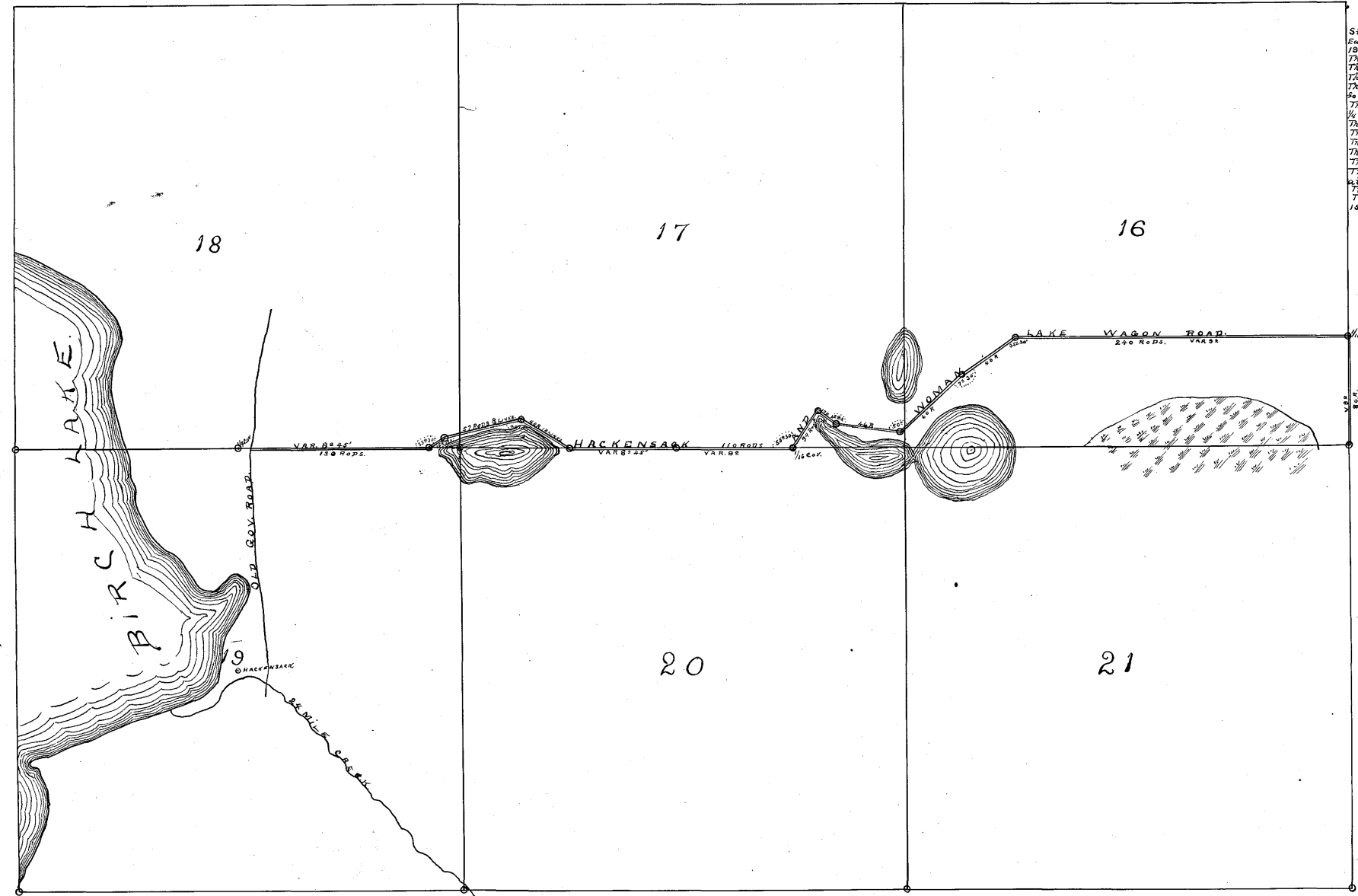


Recorded on page 22 ✓  
 Book "B"  
 Auditor's Road Record  
 R. 10. h

PLAT OF  
 HACKENSACK.  
 WOMAN LAKE.  
 ROAD.  
 TOWNSHIP 140. RANGE 30.  
 SCALE 6 1/2 inches = 1 Mile.



DISCRIPTION OF ROAD.  
 Starting at a junction the Old Gov. Road 6 Rods  
 East of the 1/4 Corner on the North Line of Sec.  
 19 in Township 140 N. Range 30 W. S. 2 R. M.  
 Thence East 130 Rods on Sec. Line VAR 8° 44'.  
 Thence North East on an angle of 83° 30' for 10 Rods.  
 Thence to the Right by a true angle of 46° 5'  
 for 40 Rods to the 1/4 Corner.  
 Thence East on Section Line 30 Rods to the  
 1/4 Corner on the North Line of Sec. 20 VAR 8° 45'.  
 Thence East on Sec. Line VAR. 8° For 10 Rods.  
 Thence Angle to the Left 55° 30' For 34 Rods.  
 Thence Angle to the Right 91° 30' For 17 Rods.  
 Thence Angle to the Left 83° For 46 Rods.  
 Thence Angle to the Left 50° For 60 Rods.  
 Thence Angle to the Right 75° 30' For 49 Rods.  
 At the 1/4 Cor. N. W. of S. E. of S. W. 1/4 Sec 16.  
 Thence East on 1/4 Line 240 Rods to 1/4 Cor.  
 Thence South on VAR 0° 30 Rods to the Cor.  
 15-16 - 21-22.

James M. Confield  
 Co. Auditor

RECORDED ON PAGES. . . .  
 ROAD CALENDAR 'A'