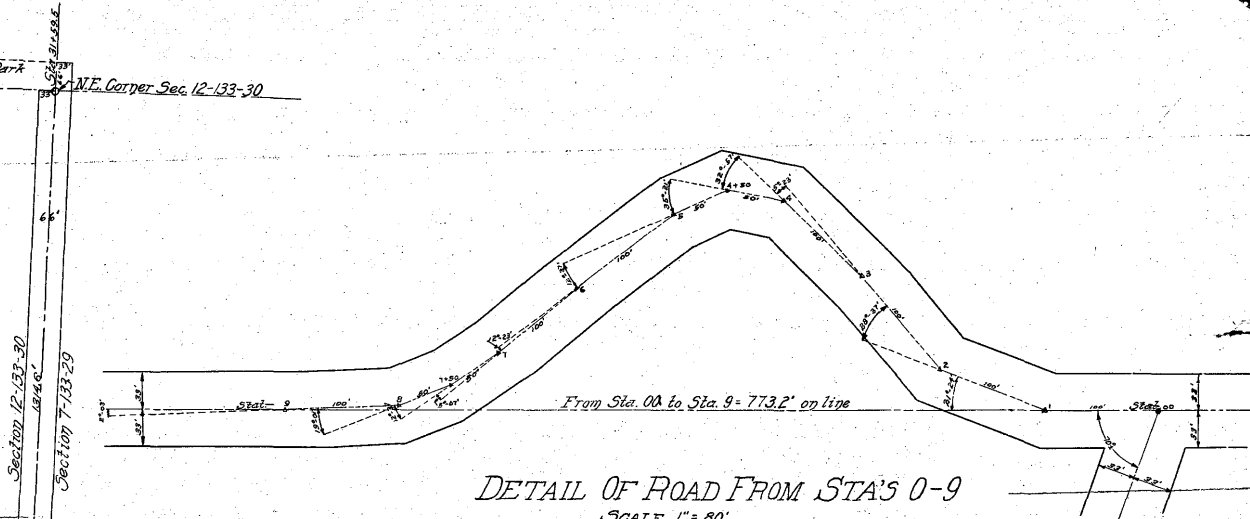
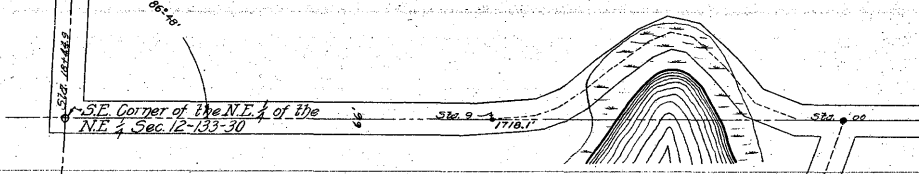


Sylvan Park Road  
NE Corner Sec. 12-133-30



DETAIL OF ROAD FROM STA'S 0-9  
SCALE 1" = 80'



PLAT OF TWP. ROAD IN SEC'S 7-133-29 & 12-133-30  
SCALE 1" = 200'

State of Minnesota } s.s.  
County of Hennepin }

I hereby certify that I have surveyed the constructed road, shown by this plat and described as follows: The center line begins at a point on the 40 line, 1718.1' east of the S.E. corner of the N.E. 1/4 of the N.E. 1/4 of Sec. 12-133-30, thence in a westerly direction along said 40 line for a distance of 100 ft.; thence in a northwesterly direction at an angle to the right of 21°-24' with the preceding course, for a distance of 100 ft.; thence in a northwesterly direction at an angle to the right of 25°-37' with the preceding course, for a distance of 100 ft.; thence in a northwesterly direction at an angle to the left of 5°-23' with the preceding course, for a distance of 100 ft.; thence in a northwesterly direction at an angle to the left of 32°-57' with the preceding course, for a distance of 50 ft.; thence in a southwesterly direction at an angle to the left of 35°-21' with the preceding course, for a distance of 50 ft.; thence in a southwesterly direction at an angle to the left of 12°-37' with the preceding course, for a distance of 100 ft.; thence in a southwesterly direction at an angle to the left of 2°-23' with the preceding course, for a distance of 50 ft.; thence in a southwesterly direction at an angle to the right of 12°-37' with the preceding course, for a distance of 50 ft.; thence in a southwesterly direction at an angle to the right of 19°-01' with the preceding course, for a distance of 100 ft. to a point which is on the aforesaid 40 line, 773.2 ft. west of the starting point; thence in a westerly direction at an angle to the right of 2°-03' with the preceding course, for a distance of 944.9 ft. to the S.E. corner of the N.E. 1/4 of the N.E. 1/4 of Sec. 12-133-30; thence in a northerly direction at an angle to the right of 93°-12' with the preceding course, and along the section line between Sec. 12-133-30 and Sec. 7-133-29, for a distance of 1314.6 ft. to the N.E. corner of Sec. 12-133-30. The above described courses constitute the center line of a 66 ft. roadway. Thence north from the N.E. corner of Sec. 12-133-30 along the section line between Sec. 12-133-30 and Sec. 7-133-29, for a distance of 66 ft. to the end of the road, said course 66 ft. in length, constitutes the west boundary of a roadway 33 ft. in width and lying to the east of said 66' course. I further certify that this plat is a correct representation of said survey, that all distances are correctly shown on the plat in feet and decimals of a foot and that iron monuments have been placed at the starting point, at the S.E. corner of the N.E. 1/4 of the N.E. 1/4 of Sec. 12-133-30 and at the N.E. corner of Sec. 12-133-30.

*Henry M. Carlsson*  
Engineer and Surveyor

Above certificate subscribed and sworn to before me this 28th day of April 1923.

*J. O. Parker*

Notary Public

My commission expires March 17, 1928

#5853