

PL 17

PINE RIVER ROAD.

Township 137-136 Range 30

County of Cass

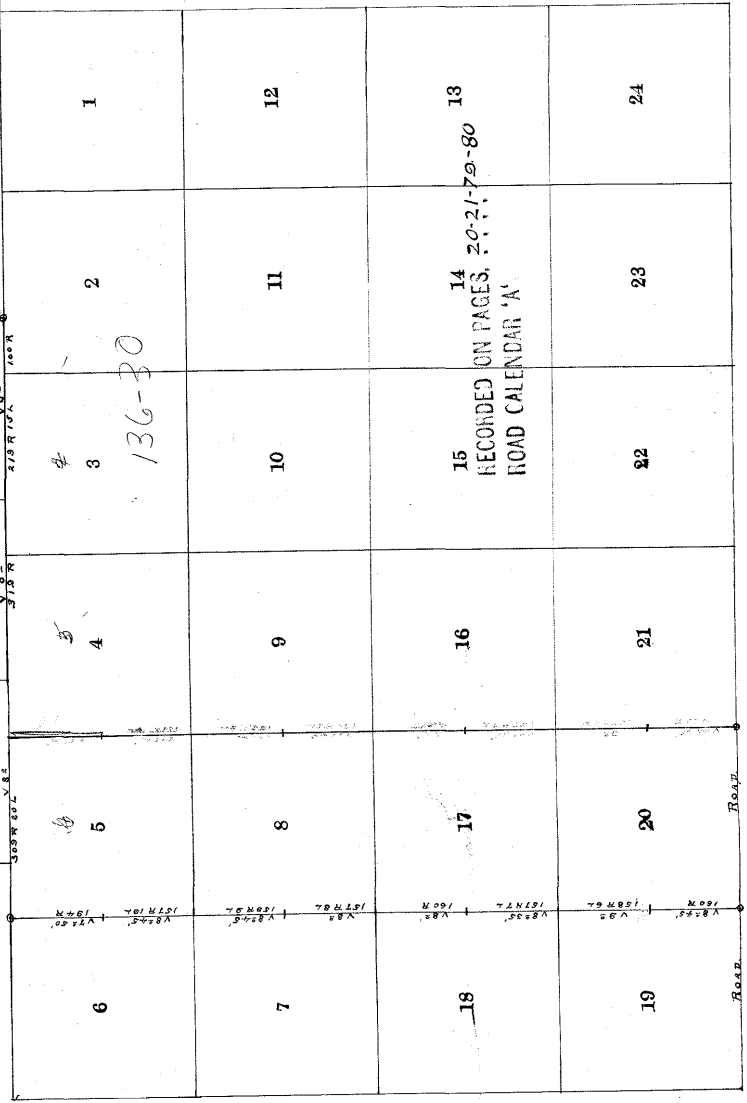
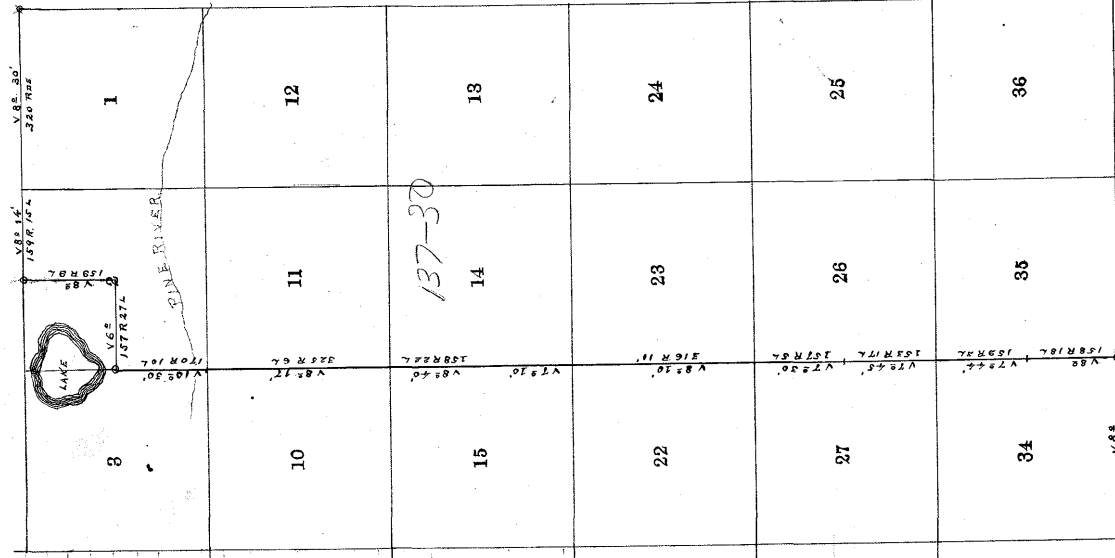
I herewith submit a plat and descriptions from actual survey made in the field, to be known as the Pine River Road. In Towns 136th, 137th R. 30. Ordered surveyed by the County Commissioners of Cass County.

Commencing at the N.E. Cor. Sec 1 T137 R.30. Thence run west 1/4 mile to 1/4 Cor. on north line of Sec. 2 in said town and range Thence south 1/2 mile to center of Sec. 2 Thence West 1/2 mile to 1/4 Cor. on West side Sec. 2 Thence South 5/8 miles to Corners of 34 & 35 in Town 137 Range 30 Thence West 3 miles and a fraction there of, (as shown on plat) To Cor. S 1/2 in Town 136 R.30. Thence South 4 miles to Cor. 10-20-28-30 in T. 136 R.30. And thence connect with a road running East and West

Witness My Hand and
 County Seal
 James M. Garfield
 County Sheriff

WITNESSED AND CORRECTED
Notary Public

— SCALE 2 IN TO THE MILE —



NOTICE: THIS MAP IS NOT CORRECT AS TO DISTANCE FROM THE SW. COR. 35 137-30. TO THE N.E. COR. 6-136-30 THE TRUE DISTANCE BEING ONE MILE SHORTER THAN THE MAP HEREWITH SHOWS

Recorded on page 20
 Book "B"
 Auditors Road Record

#5845