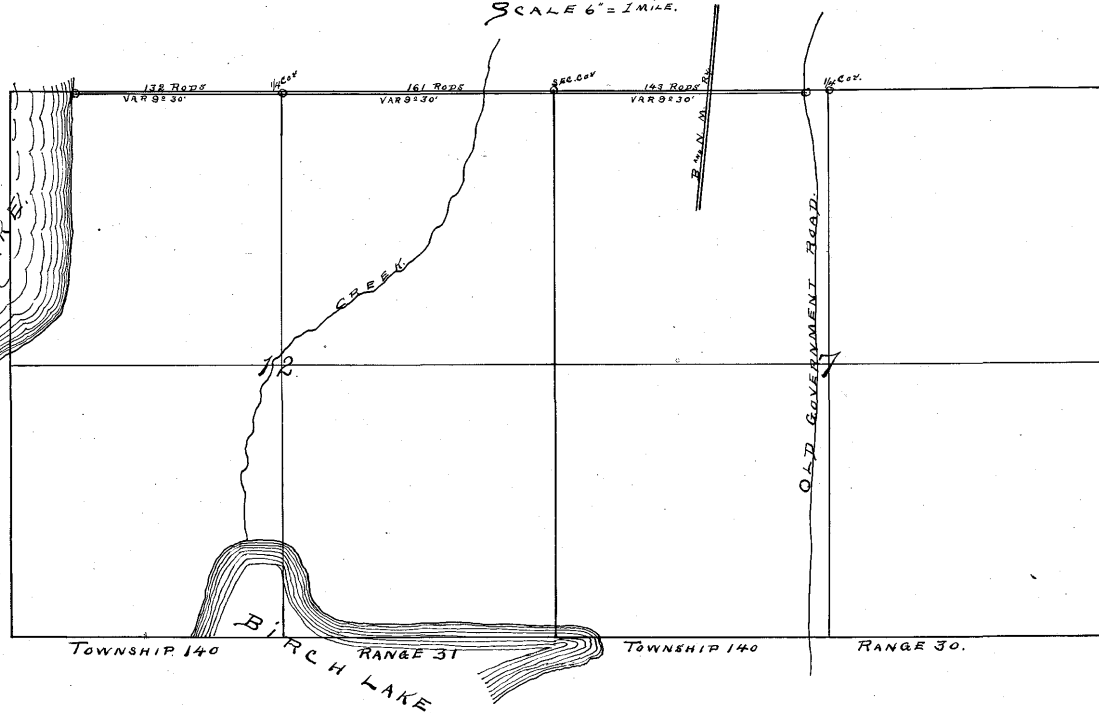


5/11

Recorded on
Page 26. Book 'A'
Auditor's Record Record
6/25

PLAT OF TEN MILE LAKE ROAD.

SCALE 6" = 1 MILE.



CERTIFICATE OF SURVEYOR.
 I, J. M. CANFIELD, County Surveyor of Cass County,
 do hereby certify that I have surveyed the Road
 on the accompanying plat, to be known as the
 TEN MILE LAKE ROAD.
 Starting at the M.C. Corner on TEN MILE LAKE I
 RUN East 132 Rods on VAR 93°30' to 1/4 Corner
 Thence East to the N.E. Cor. SEC. 12, T. 140, R. 31,
 For 161 Rods VAR 93°30'
 Thence East to the old government Road a
 distance of 143 Rods, VAR 93°30', and thence end.

James M. Canfield
 Co. Surveyor.
 C.S. 60.

RECORDED ON PAGES 22-67
 ROAD CALENDAR 'A'