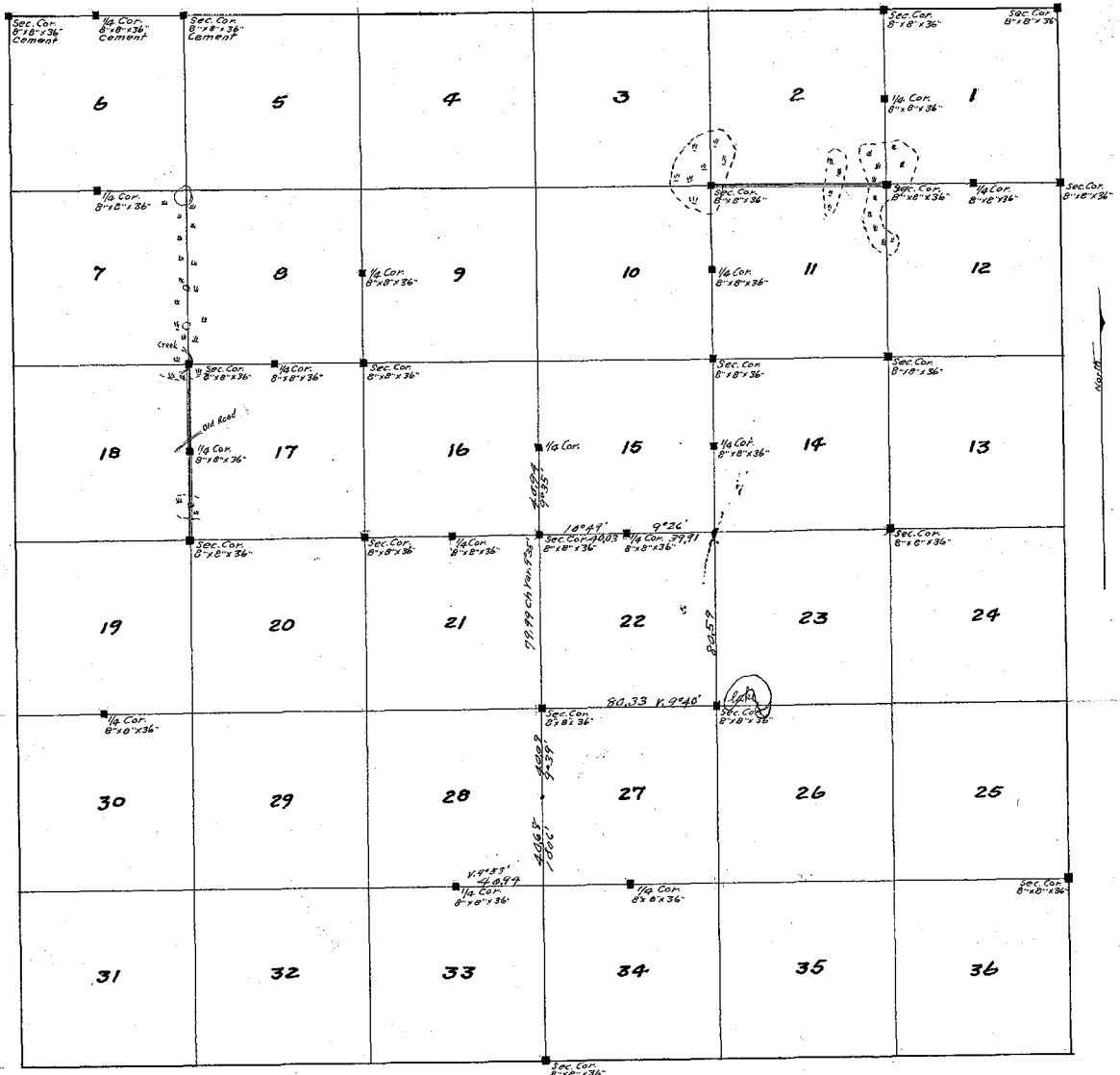


PLAT OF  
**MCKINLEY TWP., CASS CO.**  
 T. 138 N., R. 32 W., 5TH P.M.  
 SHOWING ROADS SURVEYED & CEMENT MONUMENTS  
 SET BY J.W. CURO, CO. SURVEYOR, CASS CO., JUNE 1912.

SCALE: 1 IN. = 50 FT.



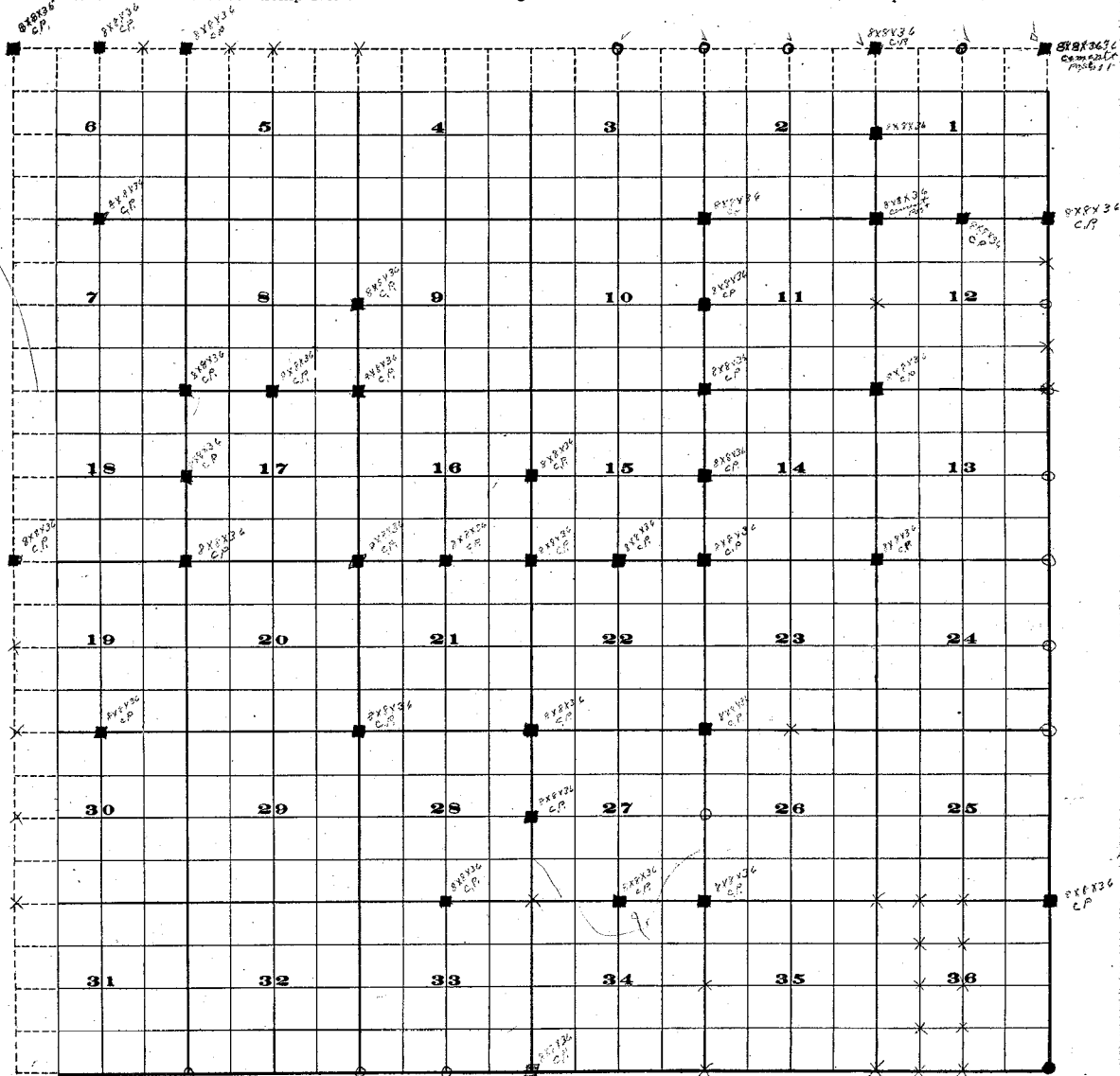
- Cement corners set on this survey.
- " " " by Todd.
- Roads surveyed.

5821

109

Cass County Minn.

Sec. Township No. 138 Range 32 of 5 Principal Meridian.



Rugene Dietzen Co., Chicago-New York

No. 358

Scale. 2 in. = 1 mile I. Pipe in Corn

- = BX8X36" Cement Post
- = Iron Pipe set in Cement
- = Iron Pipe NO Cement
- × = Woodstake
- ⊗ = Corners set by Highway Eng.

*McCainley Temp  
 exp'd by Herald Feb 10-1938*