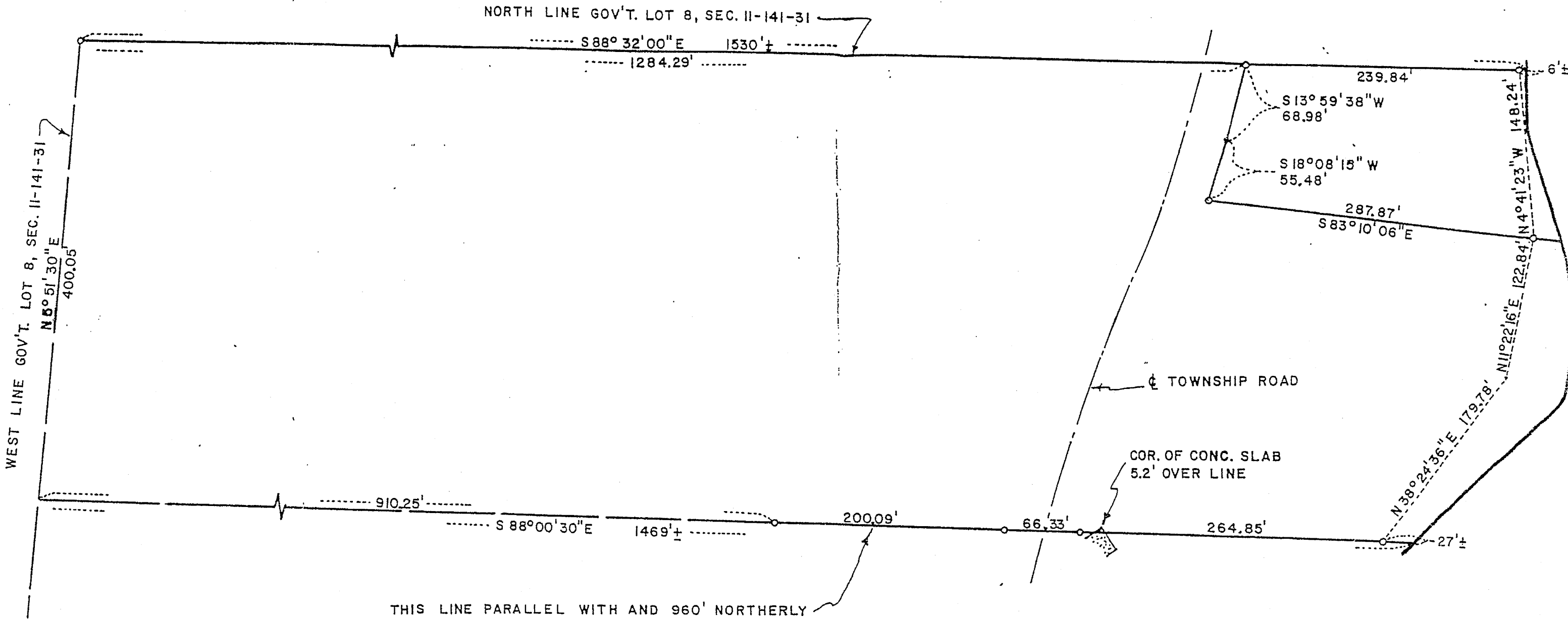
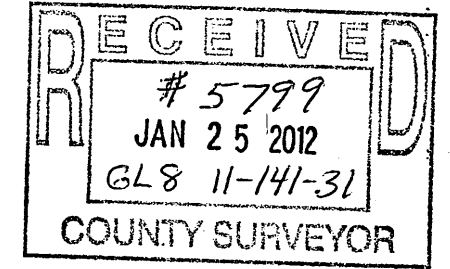


PLAT OF SURVEY

PART OF GOV'T. LOT 8, SEC. II, T. 141 N., R. 31 W.
CASS COUNTY, MINNESOTA



THIS LINE PARALLEL WITH AND 960' NORTHERLY
DISTANT FROM THE SOUTH LINE OF GOV'T. LOT 8,
SEC. II-141-31



I hereby certify that this survey, plan or report was prepared by me or under my direct supervision and that I am a duly registered Professional Engineer