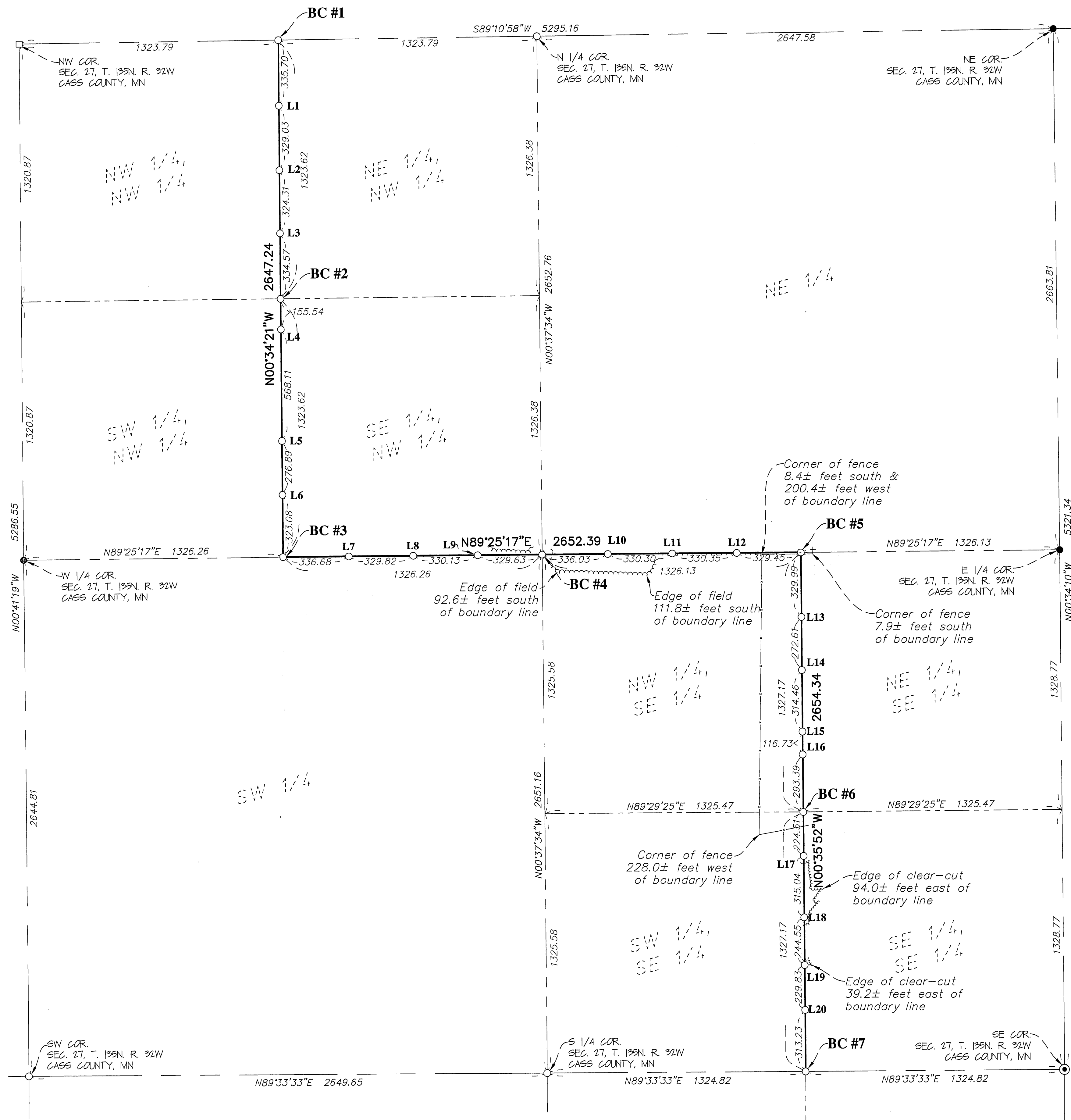


# CERTIFICATE OF SURVEY



**Boundary Corner Table**

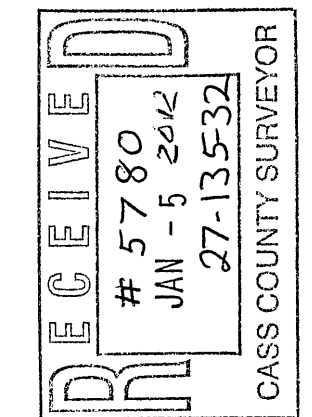
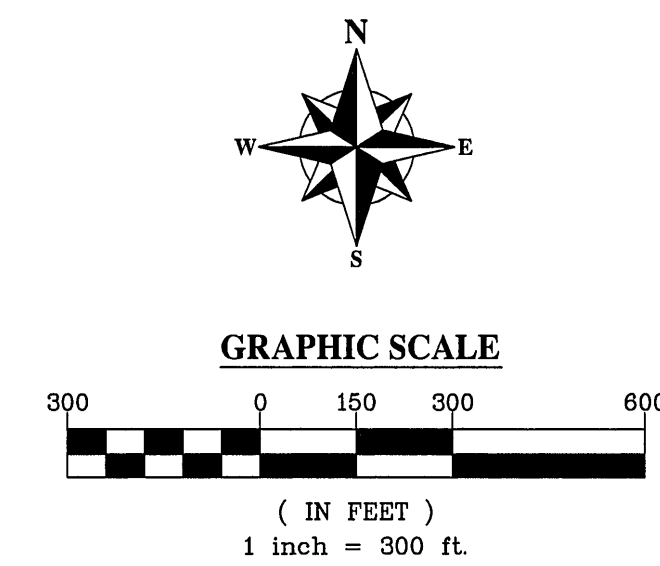
No:	Reference Tie:	Bearing:	Distance (ft):
BC-1	**No reference ties set, as corner is in wetland, and nearest accessories were over 200 feet away.		
BC-2	8" Birch	S78°W	45.20
	9" Jackpine	N12°W	22.36
BC-3	9" Jackpine	N56°E	31.00
	5" Red Oak	N62°W	17.45
BC-4	6" Jackpine	N86°E	2.41
	6" Jackpine	S23°W	9.99
BC-5	7" Aspen	N40°W	7.29
	7" Burr Oak	S14°W	21.55
BC-6	7" Burr Oak	S56°E	14.00
	7" Jackpine	S72°W	45.54
BC-7	14" Jackpine	S46°W	41.02
	10" Aspen	S15°W	44.69
BC-6	**No reference ties set, as corner is in wetland, and nearest accessories were over 200 feet away.		
BC-7	**No reference ties set, as corner is in wetland, and nearest accessories were over 200 feet away.		

**SURVEYOR'S NOTES:**

- Bearing Orientation: Bearings are based on Cass County Coordinate System - South Zone. NAD 83, 1996 Adjust.
- The field survey was completed on December 8, 2011.
- Arro Land Surveyors, LLC has made no investigation or independent search for easements of record, encumbrances, restrictive covenants, ownership title evidence, or any other facts that an accurate and current title search may disclose.
- Posts & signs were set at all boundary corners (BC #1) & boundary line corners (L1).

**LEGEND**

- DENOTES 1/2 INCH x 14 INCH IRON PIPE SET AND MARKED WITH RLS 17768 CAP.
  - DENOTES FOUND SURVEY MONUMENT
  - ⊙ DENOTES FOUND CAST IRON MONUMENT
  - DENOTES FOUND SQUARE MONUMENT
- BC #1** DENOTES BOUNDARY CORNER. SEE BOUNDARY CORNER TABLE & DIGITAL PHOTOS FOR CORRESPONDING NUMBERS. DIGITAL PHOTOS WERE PROVIDED UNDER SEPARATE COVER.
- L1** DENOTES BOUNDARY LINE CORNERS. SEE DIGITAL PHOTOS FOR CORRESPONDING NUMBERS. DIGITAL PHOTOS WERE PROVIDED UNDER SEPARATE COVER.



I hereby certify that this survey, plan or report was prepared by me or under my direct supervision and that I am a duly licensed land surveyor under the laws of the state of Minnesota.

Dated this 27th day of January, 2012.

By: *Bruce W. Skipton*  
Bruce W. Skipton, Minnesota License No. 17768



**BOUNDARY LINE SURVEY**  
Cass County Land Dept. Project No. 7  
Part of Section 27,  
T. 135N., R. 32W.,  
Cass County, Minnesota

CLIENT: CASS COUNTY LAND DEPT.  
C/O SCOTT NOLAND  
218 East Washburn Ave.  
Pine Mountain Building  
Backus, MN 56435

DRAWN BY:	REVL	CHECKED BY:	BWE
APPROVED BY:	BWE	JOB NUMBER:	IL-082
NO.:	DATE:	BY:	REVISION DESCRIPTION: