

Govt. Lot 6

STA. 54+70 ENT. LT.
F&I. 15"X30' C.M.P.

STA. 55+70 ENT. LT.
F&I. 15"X30' C.M.P.

POST. 1689' AHEAD OF P.I.
STA. 57+00 ENT. LT.
NO C.M.P. REQUIRED

POT. STA. 61+77.7
STA. 60+00 ENT. LT.
F&I. 15"X30' C.M.P.

STA. 65+00 E
F&I. 24"X102' C.M.P.

STA. 69+25 ENT. LT.
F&I. 18" SPAN X 26' A C.M.P.

EARL OLSON - ZELMA OLSON - ROBERT H. & MABEL J. HOLSAPPE

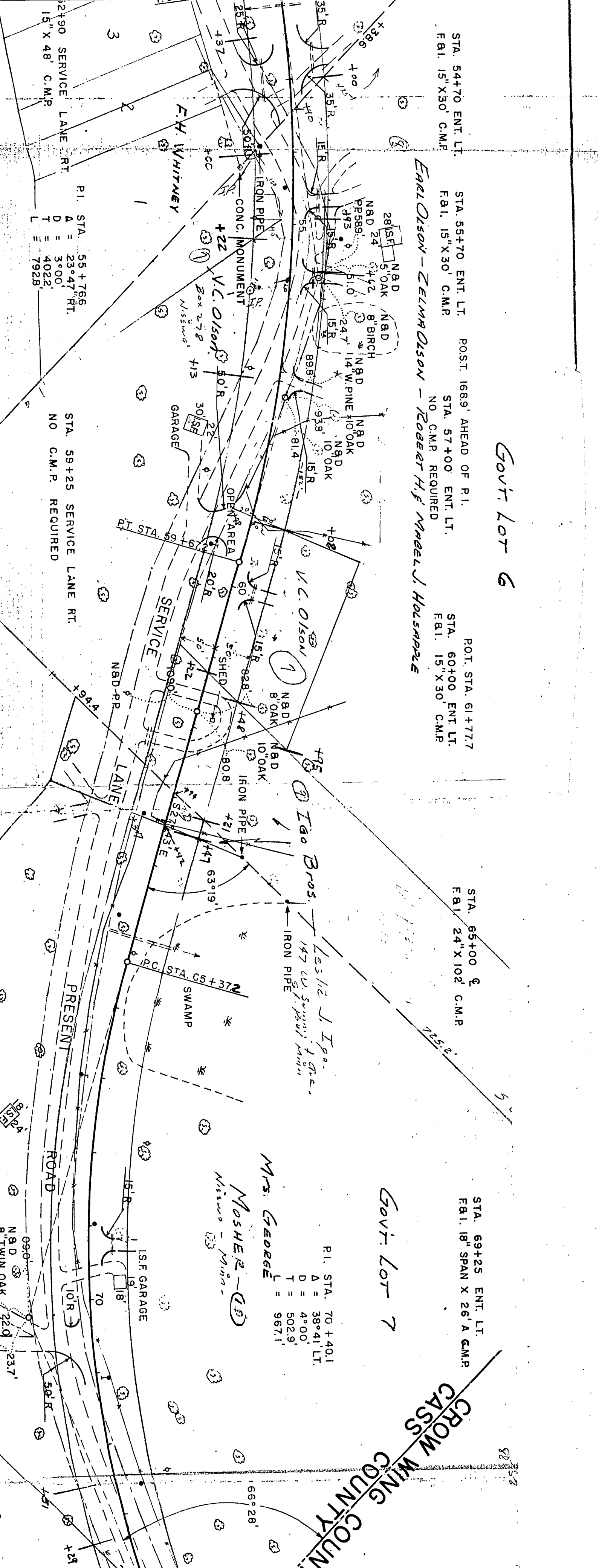
Govt. Lot 7

P.I. STA. 70+40.1
Δ = 38°41' LT.
D = 4°00'
T = 502.9'
L = 967.1'

Mrs. GEORGE

Mrs. MOSHER - (10)
Nisswa - Minn.

CROW WING COUNTY
CASS



P.I. STA. 55+76.6
Δ = 23°47' RT.
D = 3°00'
T = 402.2'
L = 792.8'

STA. 59+25 SERVICE LANE RT.
NO C.M.P. REQUIRED

P.C. STA. 65+37.2

I.S.F. GARAGE

166°28'