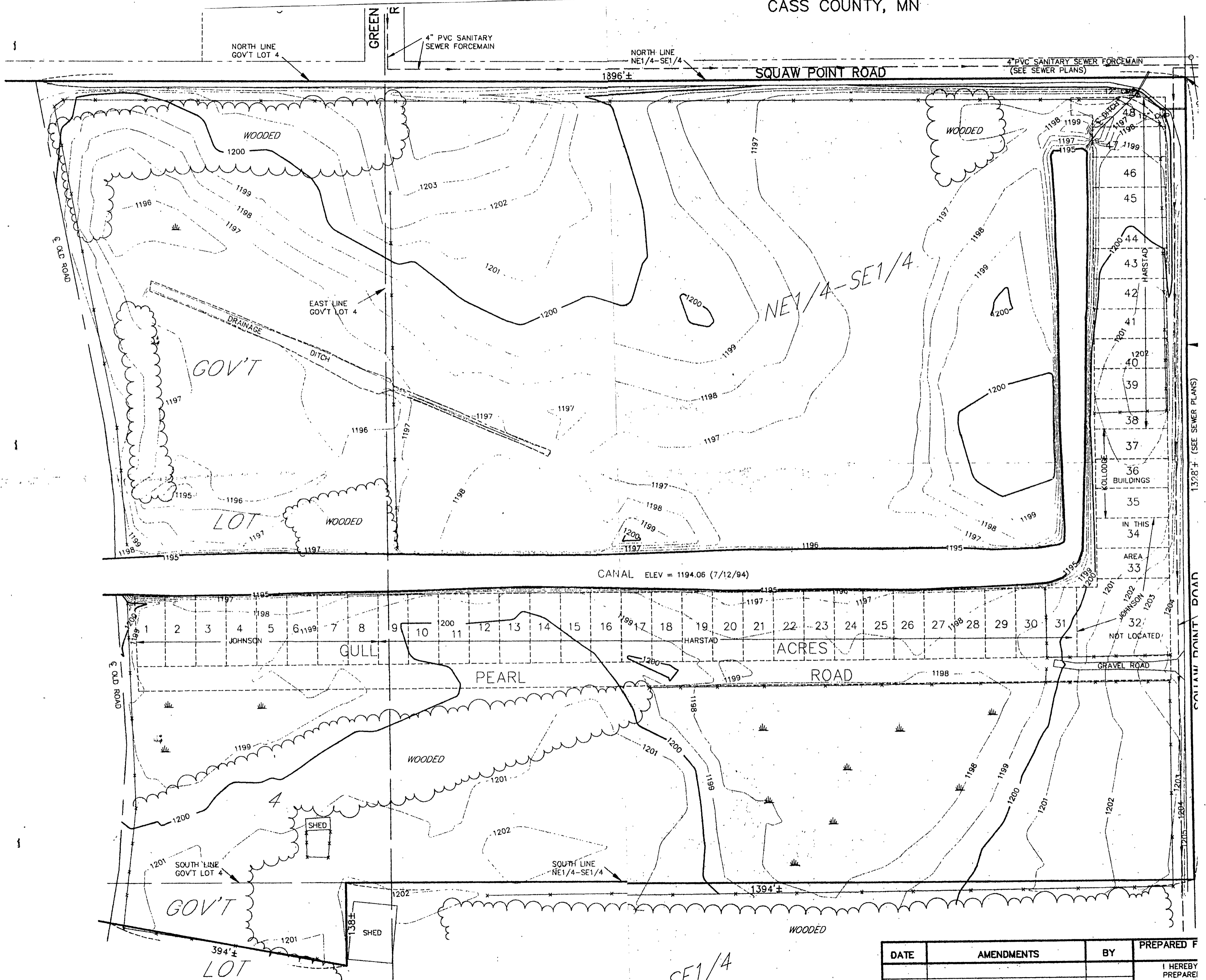


PART OF NE1/4-SE1/4 AND GOV'T LOTS 4 & 5,
 SEC. 17, T.134N., R.29W
 CASS COUNTY, MN



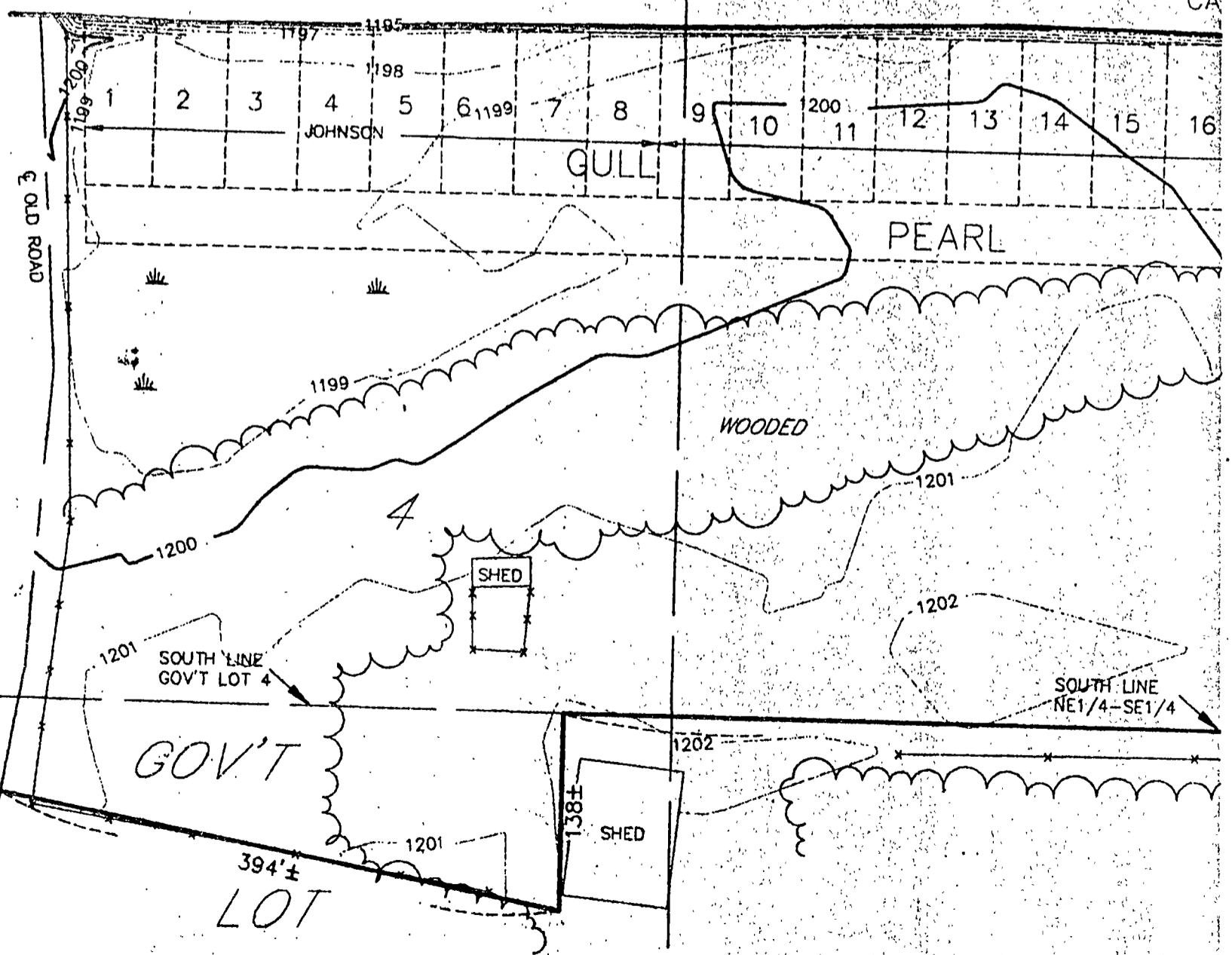
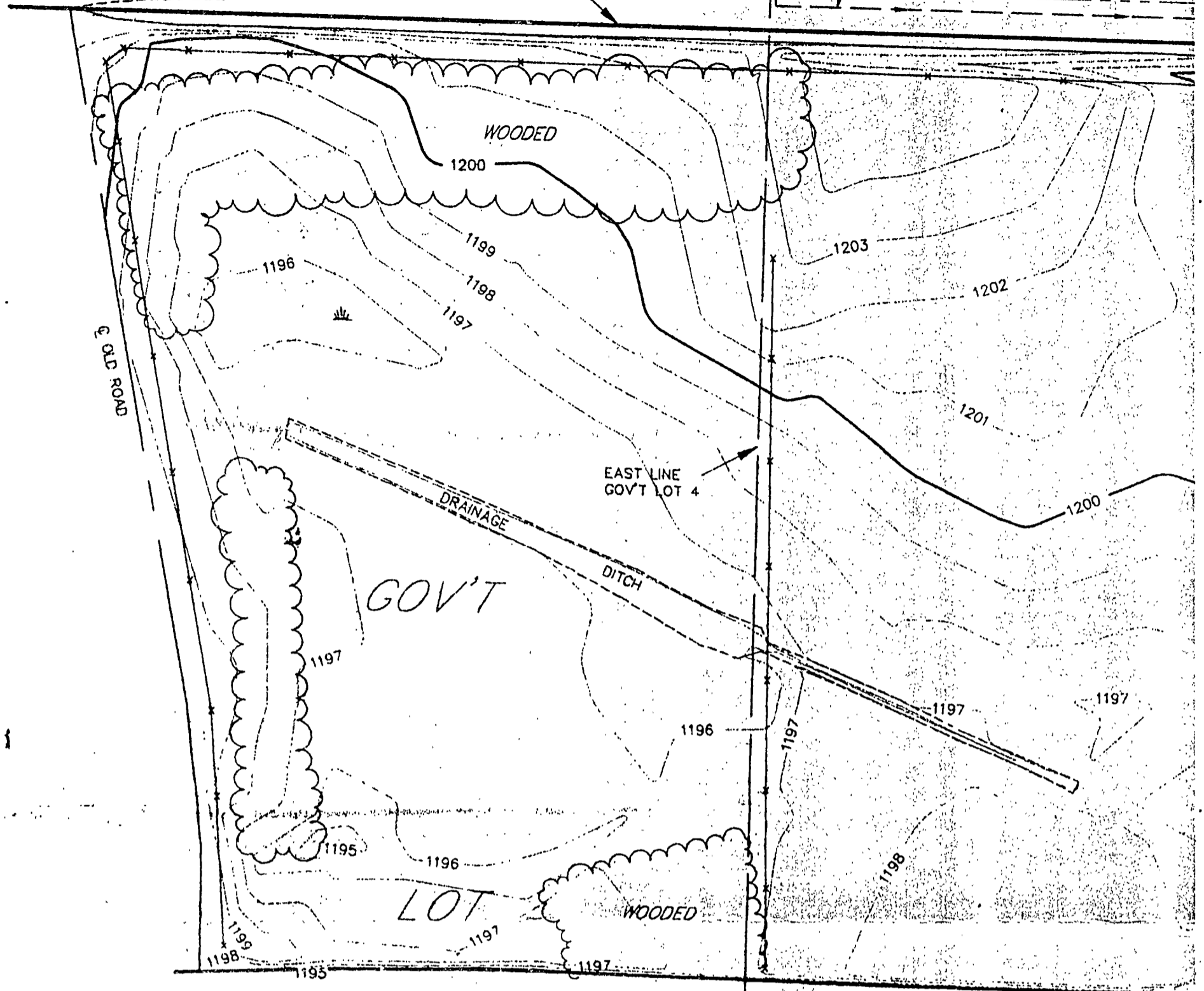
DATE	AMENDMENTS	BY	PREPARED F
			HEREBY PREPARED I AM A C

sec 17-134-29

NORTH LINE
GOV'T LOT 4

GREEN

4" PVC SANITARY
SEWER FORCEMAIN



5

SE 1/4