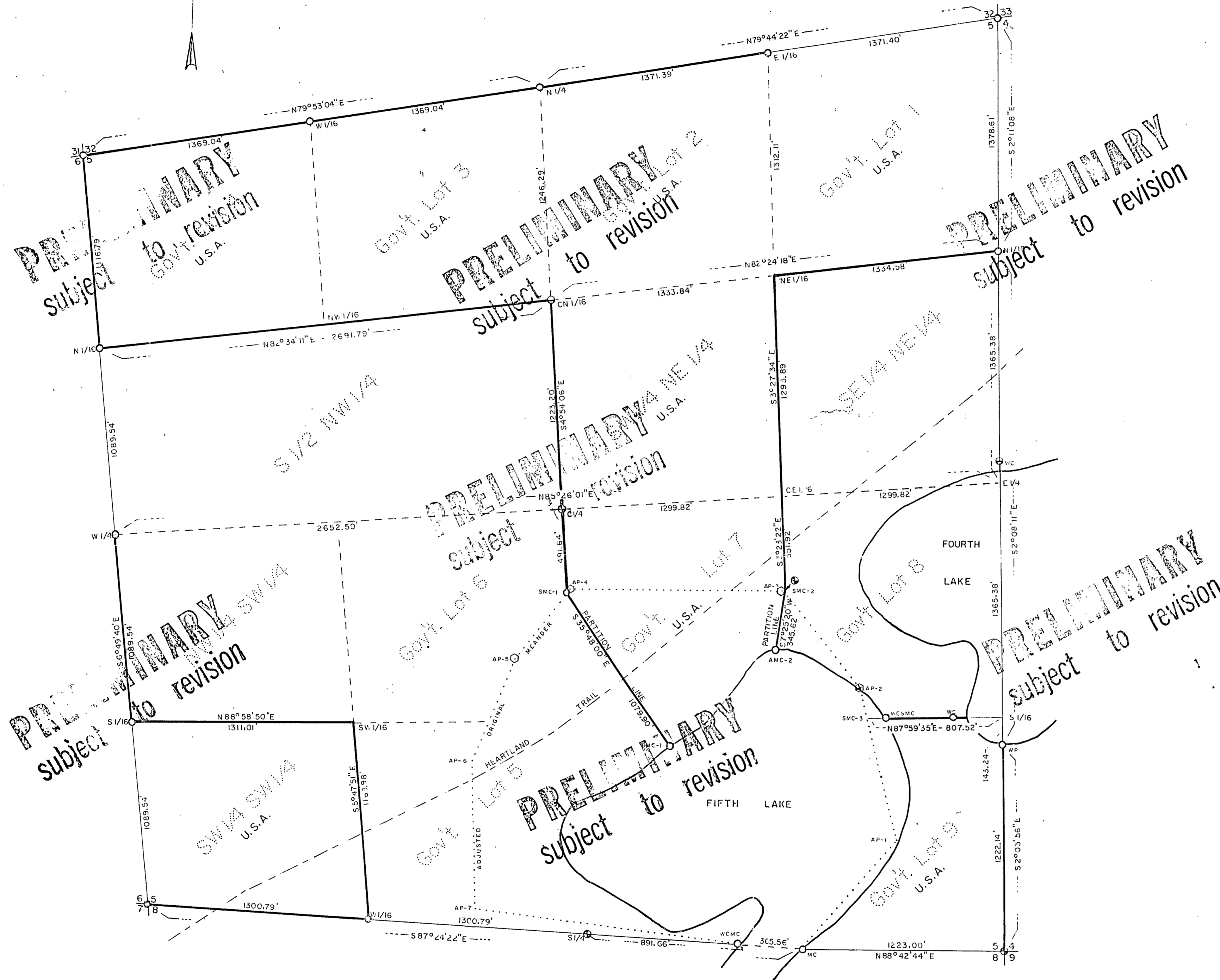
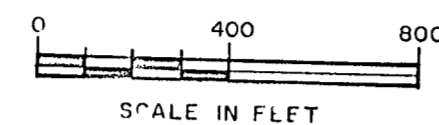


PLAT OF SURVEY
U.S. GOVERNMENT LAND

BEING THE SW 1/4 SW 1/4, SW 1/4 NE 1/4 GOVT. LOT 1,
GOVT. LOT 2, GOVT. LOT 3, GOVT. LOT 4, GOVT.
LOT 9 AND PART OF GOVT. LOT 7 OF SECTION 5
TOWNSHIP 141 NORTH, RANGE 31 WEST
FIFTH PRINCIPAL MERIDIAN
CASS COUNTY MINNESOTA



RECEIVED
NOV 16 1999
COUNTY SURVEYOR