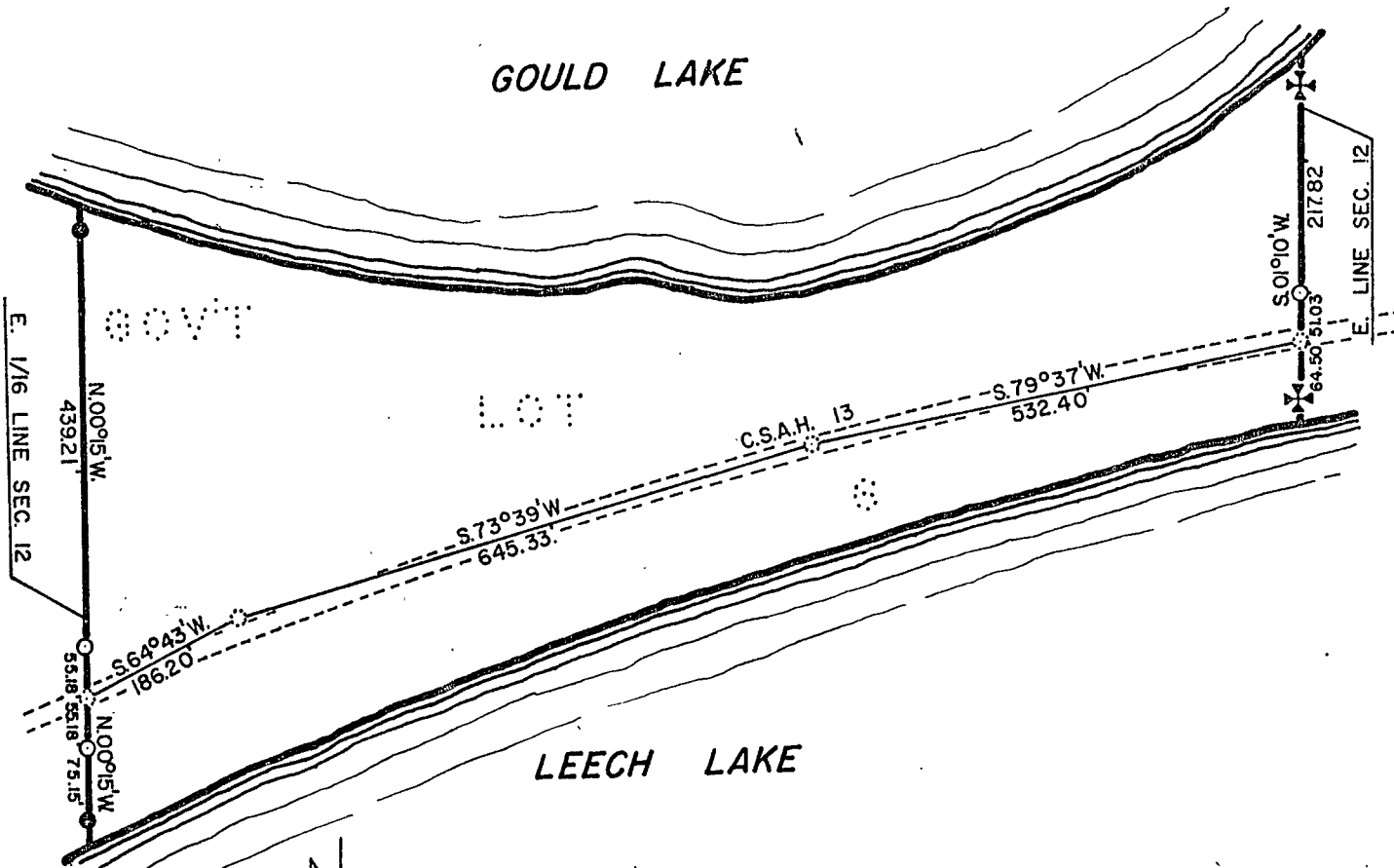
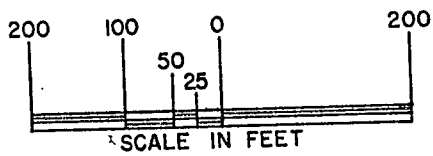


GOULD LAKE

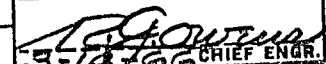


LEECH LAKE

TRACT 1 - 25.25 ACRES
 ALL OF GOV'T LOT 6, SEC. 12
 THE DOTSON COMPANY, INC.
 JULY 28, 1966
 MICROFILMED
 DOCUMENT NO. 182877



- IRON MARKER IN PLACE
- CONSERVATION MARKER SET
- ⊙ R.R. SPIKE SET
- ⊕ MEANDER CORNER IN PLACE

MINNESOTA CONSERVATION DEPARTMENT DIVISION OF GAME & FISH			
PROPERTY MAP			
GOULD LAKE SPAWNING AREA			
CASS CO. - NR. WALKER			
SEC. 12	T. 142 N.	R. 31 W.	5 TH. P.M.
DRAWN JAK 3-10-66	BUREAU OF ENGINEERING		SURVEY DJH 12-65
CHECKED GLC 3-11-66	 CHIEF ENGR.		DATUM
REVISED			FILE

REQ. 66-16

SHEET

2

F-652-X